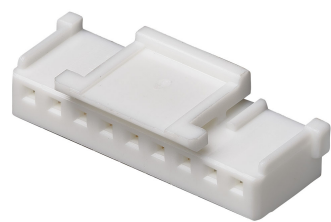




Part Number : 355070800  
Product Description : 2.00mm Pitch Sherlock  
Wire-to-Board Housing, Natural, 8 Circuits  
Series Number : 35507  
Status : New Business Not Supported  
Product Category : Connector Housings



Documents & Resources

Product Environment Compliance

Compliance

|                    |   |
|--------------------|---|
| GADSL/IMDS         | Not Relevant                                    |
| China RoHS         |   |
| EU ELV             | Not Relevant                                    |
| Low-Halogen Status | Not Low-Halogen per IEC 61249-2-21              |
| REACH SVHC         | Not Contained per D(2024)4144-DC (27 June 2024) |
| EU RoHS            | Compliant per EU 2015/863                       |

Multiple Part Product Compliance Statements

- Eu RoHS
- REACH SVHC
- Low-Halogen

Multiple Part Industry Compliance Documents

- IPC 1752A Class C
- IPC 1752A Class D
- Molex Product Compliance Declaration
- IEC-62474
- chemSHERPA (xml)

EU RoHS Certificate of Compliance

Part Details

General

|        |                            |
|--------|----------------------------|
| Status | New Business Not Supported |
|--------|----------------------------|

|                |  |
|----------------|--|
| Category       | Connector Housings   |
| Series         | 35507  |
| Description    | 2.00mm Pitch Sherlock Wire-to-Board Housing, Natural, 8 Circuits |
| Application    | Signal, Wire-to-Board  |
| Product Family | Sherlock Wire-to-Board Connector System                          |
| Product Name   | Sherlock   |
| UPC            | 800753877658   |

## Agency

|     |         |
|-----|---------|
| CSA | LR19980 |
| UL  | E29179  |

## Physical

|                               |                |
|-------------------------------|----------------|
| Circuits Detail               | 8              |
| Circuits (maximum)            | 8              |
| Color - Resin                 | Natural        |
| Flammability                  | 94V-0          |
| Gender                        | Receptacle     |
| Glow-Wire Capable             | No             |
| Keying to Mating Part         | None           |
| Lock to Mating Part           | Yes            |
| Material - Resin              | Polyester      |
| Net Weight                    | 0.380/g        |
| Number of Rows                | 1              |
| Packaging Type                | Bag            |
| Panel Mount                   | No             |
| Pitch - Mating Interface      | 2.00mm         |
| Polarized to Mating Part      | Yes            |
| Stackable                     | No             |
| Temperature Range - Operating | -40° to +105°C |

## Solder Process Data

|                              |     |
|------------------------------|-----|
| Lead-Free Process Capability | N/A |
|------------------------------|-----|

---

---

This document was generated on Sep 19, 2024