

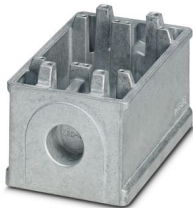
HC-B 32-SFS-72-O1M40-EEE - Housing



1580528

<https://www.phoenixcontact.com/us/products/1580528>

Please be informed that the data shown in this PDF document is generated from our online catalog. Please find the complete data in the user documentation. Our general terms of use for downloads are valid.



HEAVYCON-ADVANCE pedestal enclosure B32, for increased environmental requirements, EMC-conductive, with Allen wrench screw locking, with 1x M40x1.5 cable outlet

Commercial data

Item number	1580528
Packing unit	6 pc
Minimum order quantity	1 pc
Product key	BF7AAA
Catalog page	Page 542 (C-4-2013)
GTIN	4046356463249
Weight per piece (including packing)	884.15 g
Weight per piece (excluding packing)	884.15 g
Country of origin	DE

HC-B 32-SFS-72-O1M40-EEE - Housing



1580528

<https://www.phoenixcontact.com/us/products/1580528>

Technical data

Notes

General	For contact inserts HC-B32, DD144, M
---------	--------------------------------------

Product properties

Product type	Housing with screw locking
Housing type	Box mounting bases
Type	B32
No. of cable outlets	1
Type of the screw connection	1x M40
Fixing screws	M6 (5 mm Allen screw)
Shielded	yes
Cable outlet	lateral
Pg screw connection	none

Dimensions

Dimensional drawing	
Width	94 mm
Height	72 mm
Length	138 mm

Material specifications

Seal material	NBR, conductive
Housing material	Die-cast aluminum, salt water resistant
Housing surface material	uncoated

Environmental and real-life conditions

Ambient conditions	
Degree of protection	IP66
	IP68 (0.2 bar/24 h)
	IP69K
Enclosure rating (NEMA)	4
	4X
	6P
	12
Ambient temperature (operation)	-40 °C ... 125 °C

Mechanical properties

Mechanical data

HC-B 32-SFS-72-O1M40-EEE - Housing



1580528

<https://www.phoenixcontact.com/us/products/1580528>

Type of the screw connection	1x M40
Locking type	Nut

Mounting

Fixing screws	M6 (5 mm Allen screw)
---------------	-----------------------

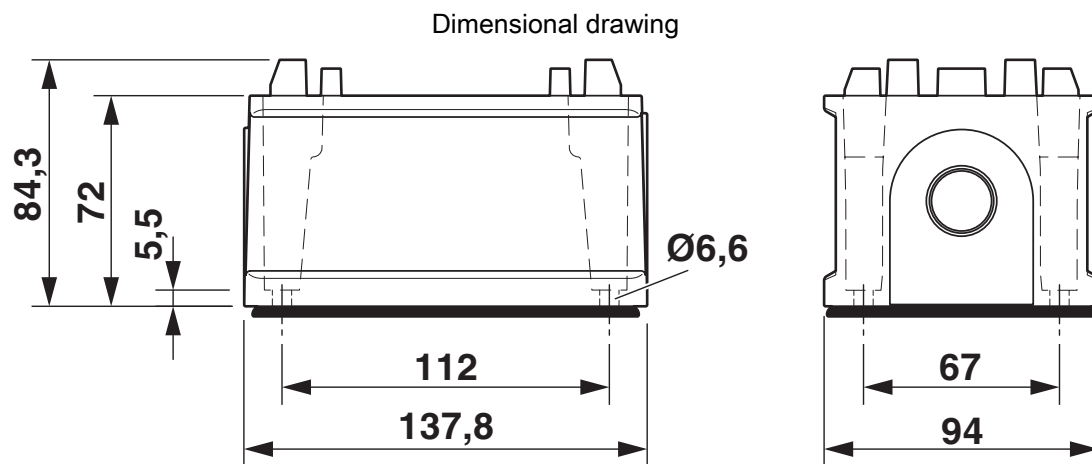
HC-B 32-SFS-72-O1M40-EEE - Housing

1580528

<https://www.phoenixcontact.com/us/products/1580528>



Drawings



Dimensional drawing

HC-B 32-SFS-72-O1M40-EEE - Housing

1580528

<https://www.phoenixcontact.com/us/products/1580528>



Classifications

ECLASS

ECLASS-11.0	27440202
ECLASS-13.0	27440202

HC-B 32-SFS-72-O1M40-EEE - Housing



1580528

<https://www.phoenixcontact.com/us/products/1580528>

Environmental product compliance

EU REACH SVHC

REACH candidate substance (CAS No.)	No substance above 0.1 wt%
-------------------------------------	----------------------------

HC-B 32-SFS-72-O1M40-EEE - Housing

1580528

<https://www.phoenixcontact.com/us/products/1580528>



Accessories

G-INS-M40-M68N-PNES-GY - Cable gland

1411128

<https://www.phoenixcontact.com/us/products/1411128>



Cable gland, material for screw connection: PA, application: Standard, external cable diameter 19 mm ... 28 mm, shielding: no, connecting thread: M40 x 1.5, color: silver-grey RAL 7001

G-INS-M40-M68N-PNES-BK - Cable gland

1411137

<https://www.phoenixcontact.com/us/products/1411137>



Cable gland, material for screw connection: PA, application: Standard, external cable diameter 19 mm ... 28 mm, shielding: no, connecting thread: M40 x 1.5, color: jet black RAL 9005

HC-B 32-SFS-72-O1M40-EEE - Housing

1580528

<https://www.phoenixcontact.com/us/products/1580528>



G-INS-M40-M68N-NNES-S - Cable gland

1411167

<https://www.phoenixcontact.com/us/products/1411167>



Cable gland, material for screw connection: Brass, nickel-plated, application: Standard, external cable diameter 19 mm ... 28 mm, shielding: no, connecting thread: M40 x 1.5, color: silver, with O-ring

HC-M-KV-M40(27-34) - Cable gland

1607729

<https://www.phoenixcontact.com/us/products/1607729>



Metal screw connection up to 5 bar, thread length: 8 mm, cable diameter: 27 ... 34 mm, WAF 50, screw connection: M40

HC-B 32-SFS-72-O1M40-EEE - Housing

1580528

<https://www.phoenixcontact.com/us/products/1580528>



G-INSEC-M40-M68N-NCRS-S - Cable gland

1411192

<https://www.phoenixcontact.com/us/products/1411192>



Cable gland, material for screw connection: Brass, nickel-plated, application: EMC, external cable diameter 19 mm ... 27 mm, shielding: yes, connecting thread: M40 x 1.5, color: silver, with O-ring

HC-M-KV-Z-M40 - Cable gland

1646175

<https://www.phoenixcontact.com/us/products/1646175>



Metal screw connection with strain relief clamp, thread length: 8 mm, cable sealing area: 24 - 33 mm, clamping area: 26 - 36 mm, SW 50, screw connection: M40

HC-B 32-SFS-72-O1M40-EEE - Housing

1580528

<https://www.phoenixcontact.com/us/products/1580528>



REDUC-M-KV-M40/M32 - Reducing adapter

1647640

<https://www.phoenixcontact.com/us/products/1647640>

Reducing adapter, connecting thread: M40 x 1.5, color: silver, with O-ring



HC-M-BS-M40 - Screw plug

1645875

<https://www.phoenixcontact.com/us/products/1645875>

Screw plug, material for screw connection: Brass, nickel-plated, connecting thread: M40 x 1.5, color: silver



HC-B 32-SFS-72-O1M40-EEE - Housing

1580528

<https://www.phoenixcontact.com/us/products/1580528>



SF-BIT-HEXB 5-89 - Screw insert

1208911

<https://www.phoenixcontact.com/us/products/1208911>



Screw bit, hexagonal with ball head, E6.3-1/4" drive, size: Hex 5 x 89 mm, hardened, suitable for holder according to DIN 3126-F 6.3/ISO 1173

SF-M BH - Screwdriver

1212070

<https://www.phoenixcontact.com/us/products/1212070>



Bit screwdriver, with 1/4" quick-action chuck, handle length 119 mm, 2-component handle, with non-slip grip, suitable for bits according to DIN 3126-C 6.3 and E 6.3/ISO 1173, magnetic

Phoenix Contact 2024 © - all rights reserved
<https://www.phoenixcontact.com>

Phoenix Contact USA
586 Fulling Mill Road
Middletown, PA 17057, United States
(+717) 944-1300
info@phoenixcon.com