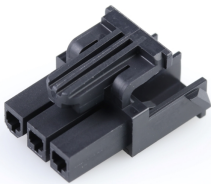




Part Number : [2004530003](#)
Product Description : Mini-Fit TPA2 Receptacle Housing, 4.20mm Pitch, Single Row, UL 94V-0, Low-Halogen, 3 Circuits
Series Number : 200453
Status : Active
Product Category : Connector Housings



Documents & Resources

Drawings

[2004530003_sd.pdf](#)
[2004530000-PK-000.pdf](#)

3D Models and Design Files

[2004530003_stp.zip](#)

Specifications

[AS-172718-0000-001.pdf](#)
[PS-172718-0000-001.pdf](#)
[1727180001-TS-000.pdf](#)
[1727180002-TS-000.pdf](#)
[1727180003-TS-000.pdf](#)

Product Environment Compliance

Compliance

GADSL/IMDS	Not Relevant
China RoHS	Not Relevant
EU ELV	Not Relevant
Low-Halogen Status	Not Relevant
REACH SVHC	Not Contained per D(2024)4144-DC (27 June 2024)
EU RoHS	Compliant per EU 2015/863

Multiple Part Product Compliance Statements

- Eu RoHS
- REACH SVHC
- Low-Halogen

Multiple Part Industry Compliance Documents

- IPC 1752A Class C
- IPC 1752A Class D
- Molex Product Compliance Declaration
- IEC-62474
- chemSHERPA (xml)

EU RoHS Certificate of Compliance

Part Details

General

Status	Active
Category	Connector Housings
Series	200453
Description	Mini-Fit TPA2 Receptacle Housing, 4.20mm Pitch, Single Row, UL 94V-0, Low-Halogen, 3 Circuits
Application	Power, Wire-to-Board, Wire-to-Wire
Comments	See product specification for current derating information.
Product Name	Mini-Fit TPA2
UPC	889056445672

Agency

UL	E29179
----	--------

Physical

Circuits (maximum)	3
Color - Resin	Black
Flammability	94V-0
Gender	Receptacle
Glow-Wire Capable	No
Lock to Mating Part	Yes
Material - Resin	Nylon
Net Weight	0.920/g
Number of Rows	1
Packaging Type	Bag
Panel Mount	No

Pitch - Mating Interface	4.20mm
Pitch - Termination Interface	4.20mm
Polarized to Mating Part	Yes
Stackable	No
Temperature Range - Operating	-40° to +105°C

Mates With / Use With

Mates with Part(s)

Description	Part Number
Mini-Fit TPA2 and Mini-Fit Sigma Single Row Plug Housings	<u>200471</u>
Mini-Fit TPA2 and Mini-Fit Sigma Single Row Plug Housings	<u>200488</u>
Mini-Fit Jr. Plug Housings	<u>5559</u>
Mini-Fit Jr. Vertical Headers	<u>5566</u>
Mini-Fit Jr. Right-Angle Headers	<u>5569</u>

Use with Part(s)

Description	Part Number
Mini-Fit TPA2/Sigma Female Crimp Terminals	<u>172718</u>
Pre-Crimped Lead Mini-Fit Sigma Female-to-Mini-Fit Sigma Female	<u>219670</u>
Pre-Crimped Lead Mini-Fit Sigma Female-to-Pigtail	<u>219671</u>
Mini-Fit TPA2 and Mini-Fit Sigma Terminal Position Assurance (TPA) Retainers	<u>172709</u>
Mini-Fit TPA2 Connector Position Assurance (CPA) Retainers	<u>203603</u>
Mini-Fit TPA2/Sigma Female Low Mating Force Crimp Terminals	<u>221442</u>