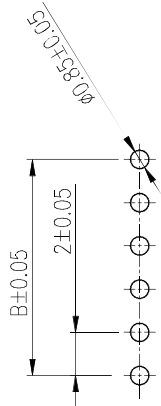
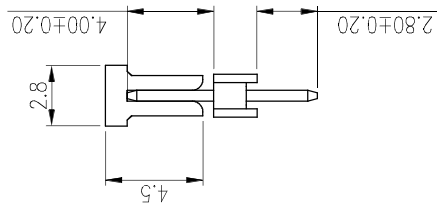
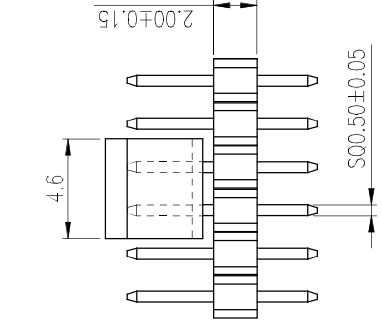
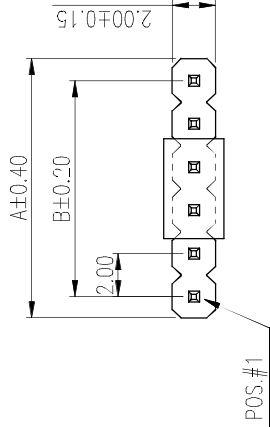


This document is the property of Amphenol Corporation and is delivered under license. It is not to be disclosed, reproduced or used in any manner without the prior written consent of Amphenol Corporation. If this document is to be disclosed or used in any manner without the prior written consent of Amphenol Corporation, it shall be at the user's sole risk. Amphenol Corporation disclaims any liability for damages, including consequential damages, arising from the use of this document. The marking on this product doesn't contain environmental hazardous materials per Material Specification SS-00259 for Sony (P) compliant or per directive 2002/95/EC for RoHS compliant.

PART NUMBER	NO. OF POS.		A	B
G825 040 10X0 YTEU	1 x 40 =	40	80.00	78.00
G825 039 10X0 YTEU	1 x 39 =	39	78.00	76.00
G825 038 10X0 YTEU	1 x 38 =	38	76.00	74.00
G825 037 10X0 YTEU	1 x 37 =	37	74.00	72.00
G825 036 10X0 YTEU	1 x 36 =	36	72.00	70.00
G825 035 10X0 YTEU	1 x 35 =	35	70.00	68.00
G825 034 10X0 YTEU	1 x 34 =	34	68.00	66.00
G825 033 10X0 YTEU	1 x 33 =	33	66.00	64.00
G825 032 10X0 YTEU	1 x 32 =	32	64.00	62.00
G825 031 10X0 YTEU	1 x 31 =	31	62.00	60.00
G825 030 10X0 YTEU	1 x 30 =	30	60.00	58.00
G825 029 10X0 YTEU	1 x 29 =	29	58.00	56.00
G825 028 10X0 YTEU	1 x 28 =	28	56.00	54.00
G825 027 10X0 YTEU	1 x 27 =	27	54.00	52.00
G825 026 10X0 YTEU	1 x 26 =	26	52.00	50.00
G825 025 10X0 YTEU	1 x 25 =	25	50.00	48.00
G825 024 10X0 YTEU	1 x 24 =	24	48.00	46.00
G825 023 10X0 YTEU	1 x 23 =	23	46.00	44.00
G825 022 10X0 YTEU	1 x 22 =	22	44.00	42.00
G825 021 10X0 YTEU	1 x 21 =	21	42.00	40.00
G825 020 10X0 YTEU	1 x 20 =	20	40.00	38.00
G825 019 10X0 YTEU	1 x 19 =	19	38.00	36.00
G825 018 10X0 YTEU	1 x 18 =	18	36.00	34.00
G825 017 10X0 YTEU	1 x 17 =	17	34.00	32.00
G825 016 10X0 YTEU	1 x 16 =	16	32.00	30.00
G825 015 10X0 YTEU	1 x 15 =	15	30.00	28.00
G825 014 10X0 YTEU	1 x 14 =	14	28.00	26.00
G825 013 10X0 YTEU	1 x 13 =	13	26.00	24.00
G825 012 10X0 YTEU	1 x 12 =	12	24.00	22.00
G825 011 10X0 YTEU	1 x 11 =	11	22.00	20.00
G825 010 10X0 YTEU	1 x 10 =	10	20.00	18.00
G825 009 10X0 YTEU	1 x 9 =	9	18.00	16.00
G825 008 10X0 YTEU	1 x 8 =	8	16.00	14.00
G825 007 10X0 YTEU	1 x 7 =	7	14.00	12.00
G825 006 10X0 YTEU	1 x 6 =	6	12.00	10.00
G825 005 10X0 YTEU	1 x 5 =	5	10.00	8.00
G825 004 10X0 YTEU	1 x 4 =	4	8.00	6.00
G825 003 10X0 YTEU	1 x 3 =	3	6.00	4.00
G825 002 10X0 YTEU	1 x 2 =	2	4.00	2.00
PART NUMBER	NO. OF POS.		A	B

PART NO. G825 XXX 10 X 0YTEU
NO. OF POSITIONS
CONTACT FINISH
0: FULL GOLD FLASH
2: 15 μ" GOLD
3: 30 μ" GOLD
4: 100 μ" MATTE TIN



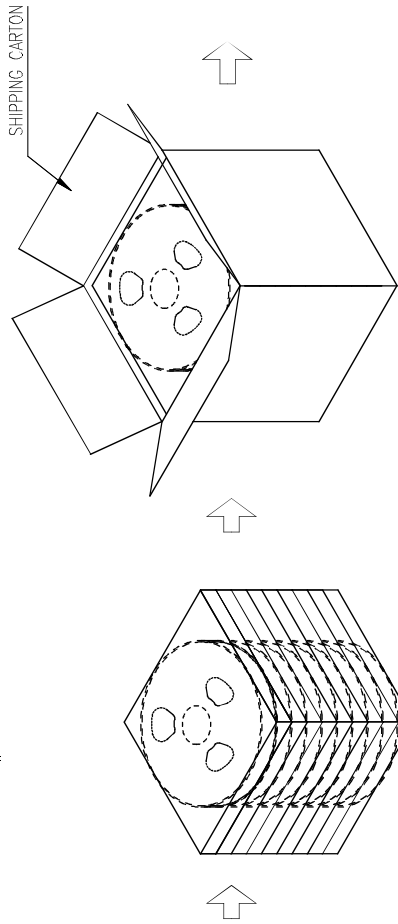
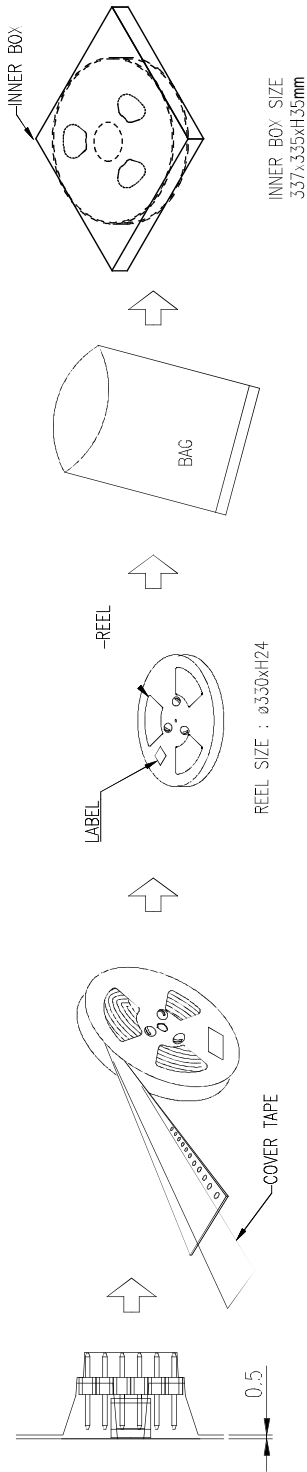
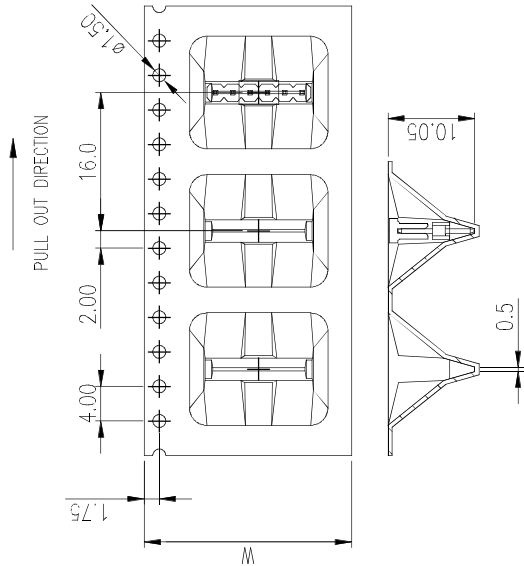
RECOMMENDED PCB LAYOUT
ALL TOLERANCE ±0.05

- NOTES:
- MATERIAL:
INSULATOR: HIGH TEMPERATURE THERMAL PLASTIC, LCP, UL94V-0, COLOR: BLACK.
TERMINAL: COPPER ALLOY.
FINISH:
PIN CONTACT:
CONTACT AREA: SELECTED GOLD PLATING;
SOLDERING AREA: MATTE TIN PLATING 100 μ" THICKNESS MIN. OR GOLD FLASH
UNDER PLATING: NICKEL PLATING 50 μ" THICKNESS MIN. OVERALL.
PACKING IS PER AMTA PACKING SPECIFICATION PKS-0001.
THIS PRODUCT IS LEAD-FREE & RoHS COMPLIANT PRODUCT.
CURRENT RATING: 1.5 AMPS/CONTACT MAX.

TOLERANCE		APPROVALS		DATE		TITLE				
X. X.X X.XX X.XXX	DRAWN	Aqua Chou		07/02/2015			UNIT	mm	SIZE	A3
	CHECKED	Roger Tsai		07/02/2015			SCALE	N/A	SHEET	1 OF 2
	APPROVED	Roger Tsai		07/02/2015						
	DWG TYPE		CUST DWG		PROJECT CODE		HEAD			
UNLESS OTHERWISE SPECIFIED										

This document is the property of Amphenol Corporation and is delivered on the express condition that it is not to be disclosed, reproduced or used in any manner without the prior written consent of Amphenol Corporation. The right is granted to disclose or to use any information in this document.

The marking on this product doesn't contain environmental hazardous materials per Material Specification SS-00259 for Sony (P) compliant or per directive 2002/95/EC for RoHS compliant.



FOR PRODUCT PART NO	POSITION	PARTS PER CARTON (S.P.Q)	PARTS PER PEEL	TOTAL PEELS PER CARTON	DIM "W"	N.W.(kg)	G.W.(kg)
G825 006 10X0 YTEU	06	3200	400	8	24	2.8	7.8

TOLERANCE	APPROVALS	DATE	TITLE	
X.X	APPROVED	07/02/2015	G825 SERIES, HEADER	
X.X	CHECKED	07/02/2015	SINGLE ROW, STRAIGHT	
X.X	DRAWN	07/02/2015	PCB MOUNT	
ANGULAR $\pm 1^\circ$	APPROVED	07/02/2015	UNIT	mm
UNLESS OTHERWISE SPECIFIED	CUST DWG	PROJECT CODE	SCALE	NA
		HEAD	SHEET	2 OF 2
			SIZE	A3
			PART No.	G825XXX10X0YTEU
			DWG No.	G825XXX10X0YTEU
			REV.	B

Amphenol
Amphenol Corporation
Amphenol Taiwan Corporation