

2904712

<https://www.phoenixcontact.com/us/products/2904712>

Please be informed that the data shown in this PDF document is generated from our online catalog. Please find the complete data in the user documentation. Our general terms of use for downloads are valid.



VIP power cabling, universal front adapter for connecting all common 40-pos. SIMATIC S7-300 I/O modules, via four cables each with a 10-pos. COMBI connector, pitch: 5.2 mm

Commercial data

Item number	2904712
Packing unit	1 pc
Minimum order quantity	1 pc
Product key	CK232S
Catalog page	Page 496 (C-5-2019)
GTIN	4046356882545
Weight per piece (including packing)	5,417 g
Weight per piece (excluding packing)	333.33 g
Country of origin	DE

VIP-PA-PWR/4X10COMBI/10,0M/S7 - Front adapter



2904712

<https://www.phoenixcontact.com/us/products/2904712>

Technical data

Product properties

Product type	Front adapter
--------------	---------------

Insulation characteristics

Insulation	Basic insulation
------------	------------------

Insulation characteristics

Insulation	Basic insulation
Overvoltage category	III
Pollution degree	2

Electrical properties

Operating voltage (AC/DC)	≤ 250 V AC/DC
Nominal operating mode	100% operating factor
Current (per single-core wire, 40°C)	≤ 6 A
Current (per single-core wire, 60°C)	≤ 4 A
Current (Total current per cable, 40°C)	≤ 20 A
Current (Total current per cable, 60°C)	≤ 16 A
Rated insulation voltage	260 V
Rated surge voltage	4 kV

Supported controller SIEMENS S7-300 / ET 200 M

Suitable I/O card	6ES7321-1BL00-0AA0
	6ES7321-1EL00-0AA0
	6ES7321-1CH00-0AA0
	6ES7321-1FF10-0AA0
	6ES7322-1BL00-0AA0
	6ES7322-8BH10-0AB0
	6ES7322-5GH00-0AB0
	6ES7322-5FF00-0AB0
	6ES7322-5HF00-0AB0
	6ES7322-1HF10-0AA0
	6ES7323-1BL00-0AA0
	6ES7331-7NF00-0AB0
	6ES7331-7NF10-0AB0
	6ES7331-1KF02-0AB0
	6ES7331-7PF01-0AB0
	6ES7331-7PF11-0AB0
	6ES7331-7PE10-0AB0
	6ES7332-5HF00-0AB0
	6ES7326-1BK02-0AB0
	6ES7326-1RF00-0AB0
	6ES7326-2BF41-0AB0

VIP-PA-PWR/4X10COMBI/10,0M/S7 - Front adapter



2904712

<https://www.phoenixcontact.com/us/products/2904712>

	6ES7326-2BF01-0AB0
	6ES7326-2BF10-0AB0
	6ES7336-1HE00-0AB0

Connection data

Controller level

Connection method	Plug-in connection
Note	Can be plugged onto 40-pos. I/O modules

Field level

Connection method	COMBICON connectors
Number of connections	4
Number of positions	10
Pitch	5.2 mm

Dimensions

Cable

Length	10 m
--------	------

Cable/line

Number of positions	10
Shielded	no
Conductor type	Round cable set
Conductor structure signal line	16x 1.80 mm
AWG signal line	21
Conductor cross section	10x 0.5 mm ²
Outer sheath, material	PVC
External sheath, color	gray
Conductor material	Bare Cu litz wires
Cable resistance	≤ 40 Ω/km
Insulation resistance	≥ 20 MΩ*km
Halogen-free	no
Flame resistance	UL VW-1

Environmental and real-life conditions

Ambient conditions

Degree of protection	IP20
Ambient temperature (operation)	-20 °C ... 60 °C
Ambient temperature (storage/transport)	-20 °C ... 80 °C

Standards and regulations

Standards/regulations	DIN EN 50178
	IEC 60664

VIP-PA-PWR/4X10COMBI/10,0M/S7 - Front adapter



2904712

<https://www.phoenixcontact.com/us/products/2904712>

Mounting

Mounting position	any
-------------------	-----

Notes

Notes on operation	For proper use, the specifications of the installation directive (see Downloads) must be observed. For applications or use with third-party products, the specifications, and the safety and warning instructions of the respective third-party manufacturer must also be met.
--------------------	--

VIP-PA-PWR/4X10COMBI/10,0M/S7 - Front adapter



2904712

<https://www.phoenixcontact.com/us/products/2904712>

Drawings

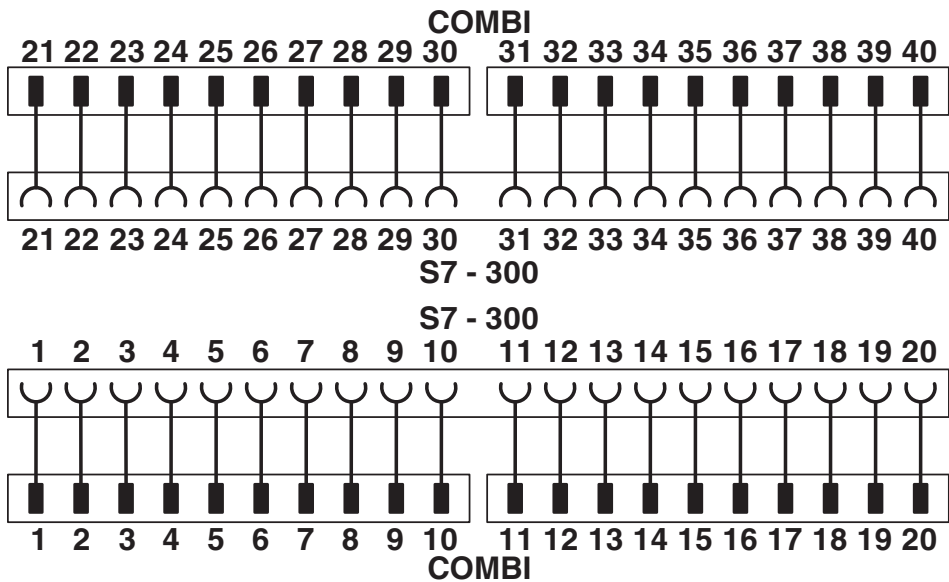
Connection diagram

Pin S7-300	Wire color	PIN COMBI	
1	white	1	Plug 1
2	brown	2	
3	green	3	
4	yellow	4	
5	gray	5	
6	pink	6	
7	blue	7	
8	red	8	
9	black	9	
10	violet	10	
11	white	11	Plug 2
12	brown	12	
13	green	13	
14	yellow	14	
15	gray	15	
16	pink	16	
17	blue	17	
18	red	18	
19	black	19	
20	violet	20	
21	white	21	Plug 3
22	brown	22	
23	green	23	
24	yellow	24	
25	gray	25	
26	pink	26	
27	blue	27	
28	red	28	
29	black	29	
30	violet	30	
31	white	31	Plug 4
32	brown	32	
33	green	33	
34	yellow	34	
35	gray	35	
36	pink	36	
37	blue	37	
38	red	38	
39	black	39	
40	violet	40	

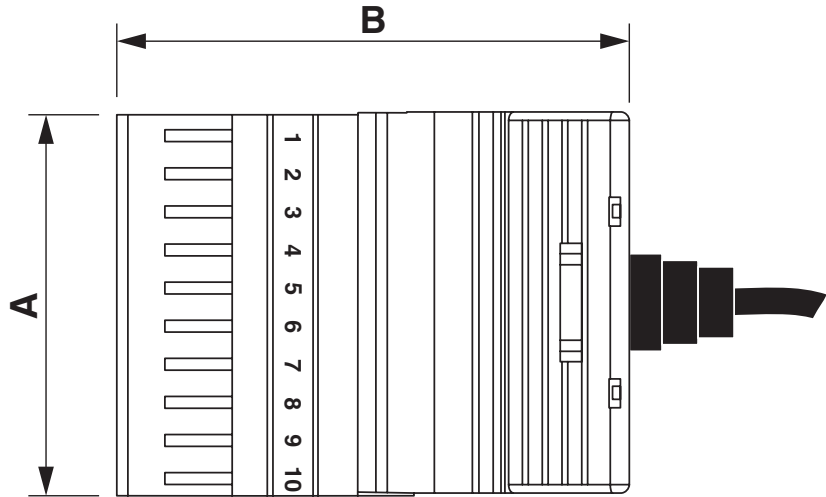
2904712

<https://www.phoenixcontact.com/us/products/2904712>

Circuit diagram



Dimensional drawing



	A	B
...4X10COMBI...	52	70
...2X10COMBI...		
...4X10 PT...	35	62
...2X10 PT...		

VIP-PA-PWR/4X10COMBI/10,0M/S7 - Front adapter



2904712

<https://www.phoenixcontact.com/us/products/2904712>

Classifications

ECLASS

ECLASS-11.0	27242292
ECLASS-13.0	27242292

UNSPSC

UNSPSC 21.0	32151601
-------------	----------

Environmental product compliance

EU RoHS	
Fulfills EU RoHS substance requirements	Yes
Exemption	6(c)
China RoHS	
Environment friendly use period (EFUP)	EFUP-50
	An article-related China RoHS declaration table can be found in the download area for the respective article under "Manufacturer declaration". For all articles with EFUP-E, no China RoHS declaration table issued and required.
EU REACH SVHC	
REACH candidate substance (CAS No.)	Lead(CAS: 7439-92-1)

2904712

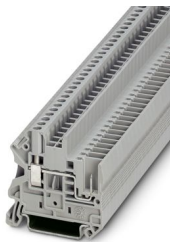
<https://www.phoenixcontact.com/us/products/2904712>

Accessories

UT 2,5/1P - Feed-through terminal block

3045017

<https://www.phoenixcontact.com/us/products/3045017>



Feed-through terminal block, nom. voltage: 500 V, nominal current: 24 A, number of connections: 2, connection method: Screw/plug-in connection, Rated cross section: 2.5 mm², cross section: 0.14 mm² - 4 mm², mounting type: NS 35/7,5, NS 35/15, color: gray

UT 2,5/1P BU - Feed-through terminal block

3045020

<https://www.phoenixcontact.com/us/products/3045020>



Feed-through terminal block, nom. voltage: 500 V, nominal current: 24 A, number of connections: 2, connection method: Screw/plug-in connection, Rated cross section: 2.5 mm², cross section: 0.14 mm² - 4 mm², mounting type: NS 35/7,5, NS 35/15, color: blue

VIP-PA-PWR/4X10COMBI/10,0M/S7 - Front adapter



2904712

<https://www.phoenixcontact.com/us/products/2904712>

PT 2,5/1P - Feed-through terminal block

3210033

<https://www.phoenixcontact.com/us/products/3210033>

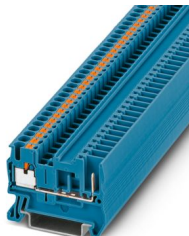


Feed-through terminal block, nom. voltage: 500 V, nominal current: 24 A, number of connections: 2, connection method: Push-in / plug connection, Rated cross section: 2.5 mm², cross section: 0.14 mm² - 4 mm², mounting type: NS 35/7,5, NS 35/15, color: gray

PT 2,5/1P BU - Feed-through terminal block

3210046

<https://www.phoenixcontact.com/us/products/3210046>



Feed-through terminal block, nom. voltage: 500 V, nominal current: 24 A, number of connections: 2, connection method: Push-in / plug connection, Rated cross section: 2.5 mm², cross section: 0.14 mm² - 4 mm², mounting type: NS 35/7,5, NS 35/15, color: blue

VIP-PA-PWR/4X10COMBI/10,0M/S7 - Front adapter



2904712

<https://www.phoenixcontact.com/us/products/2904712>

QTC 1,5/ 1P - Feed-through terminal block

3050073

<https://www.phoenixcontact.com/us/products/3050073>



Feed-through terminal block, nom. voltage: 500 V, nominal current: 17.5 A, number of connections: 2, connection method: Fast/plug-in connection, 1st level connection left, Rated cross section: 1.5 mm², cross section: 0.25 mm² - 1.5 mm², 1st level connection right, mounting type: NS 35/7,5, NS 35/15, color: gray

QTC 1,5/ 1P BU - Feed-through terminal block

3050086

<https://www.phoenixcontact.com/us/products/3050086>



Feed-through terminal block, nom. voltage: 500 V, nominal current: 17.5 A, number of connections: 2, connection method: Fast/plug-in connection, 1st level connection left, Rated cross section: 1.5 mm², cross section: 0.25 mm² - 1.5 mm², 1st level connection right, mounting type: NS 35/7,5, NS 35/15, color: blue

VIP-PA-PWR/4X10COMBI/10,0M/S7 - Front adapter



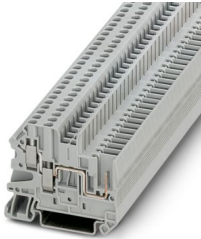
2904712

<https://www.phoenixcontact.com/us/products/2904712>

UT 2,5-TWIN/1P - Feed-through terminal block

3060490

<https://www.phoenixcontact.com/us/products/3060490>



Feed-through terminal block, nom. voltage: 500 V, nominal current: 24 A, number of connections: 3, number of positions: 1, connection method: Screw/plug-in connection, Rated cross section: 2.5 mm², cross section: 0.14 mm² - 4 mm², mounting type: NS 35/7,5, NS 35/15, color: gray

UT 2,5-TWIN/1P BU - Feed-through terminal block

3060500

<https://www.phoenixcontact.com/us/products/3060500>



Feed-through terminal block, nom. voltage: 500 V, nominal current: 24 A, number of connections: 3, number of positions: 1, connection method: Screw/plug-in connection, Rated cross section: 2.5 mm², cross section: 0.14 mm² - 4 mm², mounting type: NS 35/7,5, NS 35/15, color: blue

VIP-PA-PWR/4X10COMBI/10,0M/S7 - Front adapter



2904712

<https://www.phoenixcontact.com/us/products/2904712>

PT 2,5-TWIN/1P - Feed-through terminal block

3209633

<https://www.phoenixcontact.com/us/products/3209633>



Feed-through terminal block, nom. voltage: 500 V, nominal current: 24 A, number of connections: 3, number of positions: 1, connection method: Push-in / plug connection, Rated cross section: 2.5 mm², cross section: 0.14 mm² - 4 mm², mounting type: NS 35/7,5, NS 35/15, color: gray

PT 2,5-TWIN/1P BU - Feed-through terminal block

3209646

<https://www.phoenixcontact.com/us/products/3209646>



Feed-through terminal block, nom. voltage: 500 V, nominal current: 24 A, number of connections: 3, number of positions: 1, connection method: Push-in / plug connection, Rated cross section: 2.5 mm², cross section: 0.14 mm² - 4 mm², mounting type: NS 35/7,5, NS 35/15, color: blue

VIP-PA-PWR/4X10COMBI/10,0M/S7 - Front adapter



2904712

<https://www.phoenixcontact.com/us/products/2904712>

ST 2,5-TWIN-MT/1P - Knife-disconnect terminal block

3040766

<https://www.phoenixcontact.com/us/products/3040766>



Knife-disconnect terminal block, nom. voltage: 400 V, nominal current: 20 A, 1st level connection left, connection method: Spring-cage/plug-in connection, Rated cross section: 2.5 mm², cross section: 0.08 mm² - 4 mm², mounting: NS 35/7,5, NS 35/15, color: gray

ST 2,5-TWIN-TG/1P - Disconnect terminal block

3040847

<https://www.phoenixcontact.com/us/products/3040847>



Disconnect terminal block, The max. load current must not be exceeded by the total current of all connected conductors.

Current and voltage are determined by the plug used., nom. voltage: 400 V, nominal current: 20 A, 1st level connection left, connection method: Spring-cage/plug-in connection, Rated cross section: 2.5 mm², cross section: 0.08 mm² - 4 mm², mounting: NS 35/7,5, NS 35/15, color: gray

VIP-PA-PWR/4X10COMBI/10,0M/S7 - Front adapter



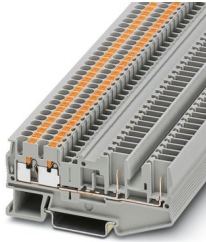
2904712

<https://www.phoenixcontact.com/us/products/2904712>

PT 2,5-QUATTRO/2P - Feed-through terminal block

3209662

<https://www.phoenixcontact.com/us/products/3209662>



Feed-through terminal block, nom. voltage: 500 V, nominal current: 24 A, number of connections: 4, connection method: Push-in / plug connection, 1 level, Rated cross section: 2.5 mm², cross section: 0.14 mm² - 4 mm², mounting type: NS 35/7,5, NS 35/15, color: gray

PT 2,5-QUATTRO/2P BU - Feed-through terminal block

3209675

<https://www.phoenixcontact.com/us/products/3209675>



Feed-through terminal block, nom. voltage: 500 V, nominal current: 24 A, number of connections: 4, connection method: Push-in / plug connection, 1 level, Rated cross section: 2.5 mm², cross section: 0.14 mm² - 4 mm², mounting type: NS 35/7,5, NS 35/15, color: blue

VIP-PA-PWR/4X10COMBI/10,0M/S7 - Front adapter



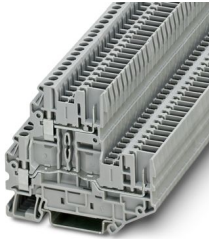
2904712

<https://www.phoenixcontact.com/us/products/2904712>

UTTB 2,5/2P - Double-level terminal block

3060351

<https://www.phoenixcontact.com/us/products/3060351>

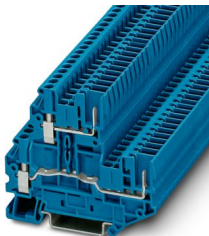


Double-level terminal block, Current and voltage are determined by the plug used., nom. voltage: 500 V, nominal current: 24 A, connection method: Screw/plug-in connection, Rated cross section: 2.5 mm², cross section: 0.14 mm² - 4 mm², mounting type: NS 35/7,5, NS 35/15, color: gray

UTTB 2,5/2P BU - Double-level terminal block

3060364

<https://www.phoenixcontact.com/us/products/3060364>



Double-level terminal block, Current and voltage are determined by the plug used., nom. voltage: 500 V, nominal current: 24 A, connection method: Screw/plug-in connection, Rated cross section: 2.5 mm², cross section: 0.14 mm² - 4 mm², mounting type: NS 35/7,5, NS 35/15, color: blue

VIP-PA-PWR/4X10COMBI/10,0M/S7 - Front adapter



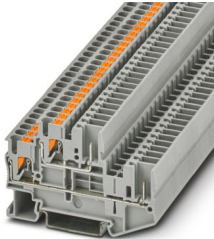
2904712

<https://www.phoenixcontact.com/us/products/2904712>

PTTB 2,5/2P - Double-level terminal block

3210871

<https://www.phoenixcontact.com/us/products/3210871>

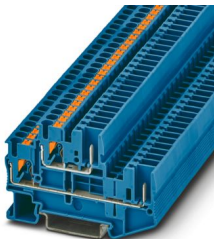


Double-level terminal block, Current and voltage are determined by the plug used., nom. voltage: 500 V, nominal current: 22 A, connection method: Push-in / plug connection, Rated cross section: 2.5 mm², cross section: 0.14 mm² - 4 mm², mounting type: NS 35/7,5, NS 35/15, color: gray

PTTB 2,5/2P BU - Double-level terminal block

3210884

<https://www.phoenixcontact.com/us/products/3210884>



Double-level terminal block, Current and voltage are determined by the plug used., nom. voltage: 500 V, nominal current: 22 A, connection method: Push-in / plug connection, 1st and 2nd level, Rated cross section: 2.5 mm², cross section: 0.14 mm² - 4 mm², mounting type: NS 35/7,5, NS 35/15, color: blue

VIP-PA-PWR/4X10COMBI/10,0M/S7 - Front adapter



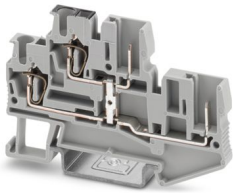
2904712

<https://www.phoenixcontact.com/us/products/2904712>

STTB 2,5/2P - Double-level terminal block

3040054

<https://www.phoenixcontact.com/us/products/3040054>

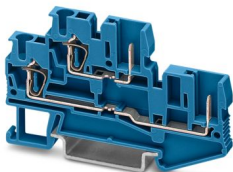


Double-level terminal block, Current and voltage are determined by the plug used., nom. voltage: 500 V, nominal current: 22 A, connection method: Spring-cage/plug-in connection, 1st and 2nd level connection left, Rated cross section: 2.5 mm², cross section: 0.08 mm² - 4 mm², 1st and 2nd level connection right, mounting type: NS 35/15, NS 35/7,5, color: gray

STTB 2,5/2P BU - Double-level terminal block

3040672

<https://www.phoenixcontact.com/us/products/3040672>



Double-level terminal block, Current and voltage are determined by the plug used., nom. voltage: 500 V, nominal current: 22 A, connection method: Spring-cage/plug-in connection, 1st and 2nd level connection left, Rated cross section: 2.5 mm², cross section: 0.08 mm² - 4 mm², 1st and 2nd level connection right, mounting type: NS 35/15, NS 35/7,5, color: blue

VIP-PA-PWR/4X10COMBI/10,0M/S7 - Front adapter



2904712

<https://www.phoenixcontact.com/us/products/2904712>

QTTCB 1,5/ 2P - Double-level terminal block

3050196

<https://www.phoenixcontact.com/us/products/3050196>



Double-level terminal block, Current and voltage are determined by the plug used., nom. voltage: 500 V, nominal current: 17.5 A, connection method: Fast/plug-in connection, Rated cross section: 1.5 mm², cross section: 0.25 mm² - 1.5 mm², mounting type: NS 35/7,5, NS 35/15, color: gray

QTTCB 1,5/ 2P BU - Double-level terminal block

3050206

<https://www.phoenixcontact.com/us/products/3050206>



Double-level terminal block, Current and voltage are determined by the plug used., nom. voltage: 500 V, nominal current: 17.5 A, connection method: Fast/plug-in connection, Rated cross section: 1.5 mm², cross section: 0.25 mm² - 1.5 mm², mounting: NS 35/7,5, NS 35/15, color: blue

VIP-PA-PWR/4X10COMBI/10,0M/S7 - Front adapter



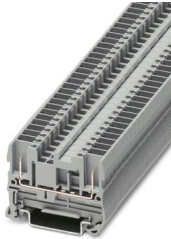
2904712

<https://www.phoenixcontact.com/us/products/2904712>

ST 2,5/2P - Feed-through terminal block

3042133

<https://www.phoenixcontact.com/us/products/3042133>

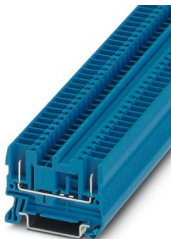


Feed-through terminal block, nom. voltage: 500 V, nominal current: 24 A, number of connections: 2, connection method: Plug-in connection, 1 level, Rated cross section: 2.5 mm², cross section: 0.08 mm² - 4 mm², mounting type: NS 35/7,5, NS 35/15, color: gray

ST 2,5/2P BU - Feed-through terminal block

3042094

<https://www.phoenixcontact.com/us/products/3042094>



Feed-through terminal block, nom. voltage: 500 V, nominal current: 24 A, number of connections: 2, connection method: Plug-in connection, 1 level, Rated cross section: 2.5 mm², cross section: 0.08 mm² - 4 mm², mounting type: NS 35/7,5, NS 35/15, color: blue

VIP-PA-PWR/4X10COMBI/10,0M/S7 - Front adapter



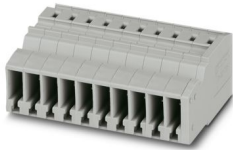
2904712

<https://www.phoenixcontact.com/us/products/2904712>

SC 2,5/10 - COMBI coupling

3042311

<https://www.phoenixcontact.com/us/products/3042311>

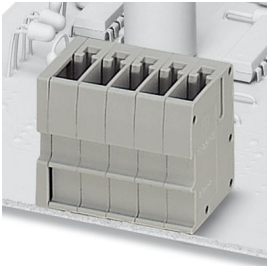


COMBI coupling, nom. voltage: 500 V, nominal current: 24 A, number of connections: 1, number of positions: 10, connection method: Spring-cage connection, Rated cross section: 2.5 mm², cross section: 0.08 mm² - 4 mm², color: gray

ST 2,5-PCBV/10-G-5,2 - PCB header

1980569

<https://www.phoenixcontact.com/us/products/1980569>



ST-COMBI receptacle, plug-in direction vertical to the PCB, pitch: 5.2 mm, no. of positions: 10

Phoenix Contact 2024 © - all rights reserved

<https://www.phoenixcontact.com>

Phoenix Contact USA
586 Fulling Mill Road
Middletown, PA 17057, United States
(+717) 944-1300
info@phoenixcon.com