

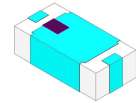
Features

- small size
- temperature stable
- LTCC construction

Applications

- Harmonic rejection
- Transmitters / Receivers

JY-BFCN-1262+



50Ω 12100 to 13200 MHz

Electrical Specifications at 25°C

Parameter		Frequency(MHz)	Min.	Typ.	Max.	Unit
Pass Band	Center Frequency	-		12600		MHz
	Insertion Loss	12100-13200	-	5	7	dB
	Insertion Loss	12300-13000	-	4	-	dB
	VSWR	12100-13200	-	1.7	-	:1
Stop Band, Lower	Insertion Loss	DC-9760	30	45	-	dB
Stop Band, Upper	Insertion Loss	15170-25000	20	30	-	dB
		25000-35000	15	20	-	dB

1. Measured on Mini-Circuits Characterization Test Board with feedline losses removed by normalization of S12 and S21 traces to measurement of TB thru-line.
2. This filter is not intended for use as a DC Blocking circuit element. In Application where DC voltage is present at either input or output ports, blocking capacitors are required at the corresponding RF port.

Maximum Ratings

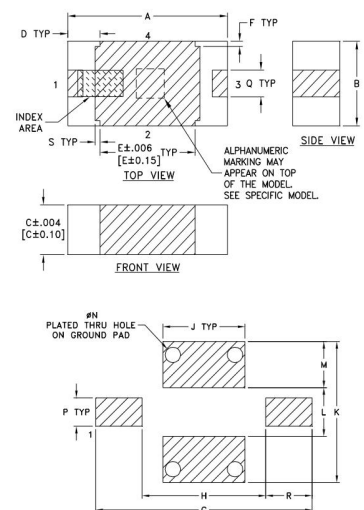
Operating Temperature	-55°C to 100°C
Storage Temperature	-55°C to 100°C
RF Power Input*	2W .at 25°C

*Passband rating, derate linearly to 0.5W at 100°C ambient
Permanent damage may occur if any of these limits are exceeded.

Pin Connections

RF IN	1
RF OUT	3
GROUND	2

Outline Drawing



Suggested Layout,
Tolerance to be within $\pm .002$

Outline Dimensions (inch)

A	B	C	D	E	F	G	H	J
.126	.063	.037	.026	.075	.004	.182	.104	.069
3.20	1.60	0.94	0.66	1.91	0.10	4.62	2.64	1.753
K	L	M	N	P	Q	R	S	wt
0.119	0.041	.039	.013	.024	.020	.039	.004	grams
3.023	1.041	0.99	0.33	0.61	0.51	0.99	0.10	.020

Suggested PCB Layout

