

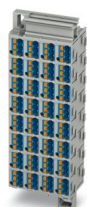
PTMC 1,5/32-3 /BU - Marshalling patchboard



3270312

<https://www.phoenixcontact.com/us/products/3270312>

Please be informed that the data shown in this PDF document is generated from our online catalog. Please find the complete data in the user documentation. Our general terms of use for downloads are valid.



Marshalling patchboard, Labeled from 1 - 32, nom. voltage: 500 V, nominal current: 17.5 A, connection method: Push-in connection, cross section: 0.14 mm² - 2.5 mm², mounting: Wall mounting, color: gray, color of connection elements: blue

Your advantages

- Blue version for using in intrinsically safe circuits in potentially explosive areas (type of protection Ex i)
- For mounting in a panel cutout
- Clear representation of actuation and terminal points through vertical conductor routing
- High contact quality thanks to push-in technology as a replacement for Wire-Wrap®, TERMI-POINT®, etc.
- Tool-free wiring in a confined space thanks to compact size

Commercial data

Item number	3270312
Packing unit	18 pc
Minimum order quantity	18 pc
Note	Made to order (non-returnable)
Sales key	BE62
Product key	BE6212
Catalog page	Page 58 (C-1-2019)
GTIN	4055626058344
Weight per piece (including packing)	99.99 g
Weight per piece (excluding packing)	99.99 g
Customs tariff number	85369010
Country of origin	PL

PTMC 1,5/32-3 /BU - Marshalling patchboard



3270312

<https://www.phoenixcontact.com/us/products/3270312>

Technical data

Notes

General	Labeled from 1 - 32
---------	---------------------

Product properties

Product type	Marshalling terminal
Number of positions	32
Number of connections	192
Number of rows	1

Insulation characteristics

Overvoltage category	III
Degree of pollution	3

Electrical properties

Rated surge voltage	6 kV
Maximum power dissipation for nominal condition	0.56 W

Connection data

Number of connections per level	192
Nominal cross section	1.5 mm ²
Rated cross section AWG	14
Stripping length	8 mm ... 10 mm
Internal cylindrical gage	A1
Connection in acc. with standard	IEC 60947-7-1
Conductor cross section rigid	0.14 mm ² ... 2.5 mm ²
Cross section AWG	26 ... 14 (converted acc. to IEC)
Conductor cross section flexible	0.14 mm ² ... 1.5 mm ²
Conductor cross section, flexible [AWG]	26 ... 16 (converted acc. to IEC)
Conductor cross-section flexible (ferrule without plastic sleeve)	0.14 mm ² ... 1.5 mm ²
Flexible conductor cross section (ferrule with plastic sleeve)	0.14 mm ² ... 1.5 mm ²
Nominal current	17.5 A
Maximum load current	24 A (in case of a 2.5 mm ² conductor cross section, the maximum load current must not be exceeded by the total current of all connected conductors.) 12 A (in case of a 2.5 mm ² conductor cross section, the maximum load current must not be exceeded by the total current of all connected conductors.)
Nominal voltage	500 V

Connection cross sections directly pluggable

Conductor cross section rigid	0.34 mm ² ... 2.5 mm ²
Conductor cross section, rigid [AWG]	20 ... 14 (converted acc. to IEC)
Conductor cross-section flexible (ferrule without plastic sleeve)	0.34 mm ² ... 1.5 mm ²
Flexible conductor cross section (ferrule with plastic sleeve)	0.34 mm ² ... 1.5 mm ²

PTMC 1,5/32-3 /BU - Marshalling patchboard



3270312

<https://www.phoenixcontact.com/us/products/3270312>

Dimensions

Dimensional drawing	
Width	44 mm
Height	102 mm
Depth	30 mm

Material specifications

Color	gray
Color of connection elements	blue
Flammability rating according to UL 94	V0
Insulating material group	I
Insulating material	PA
Static insulating material application in cold	-60 °C
Temperature index of insulation material (DIN EN 60216-1 (VDE 0304-21))	125 °C
Relative insulation material temperature index (Elec., UL 746 B)	130 °C
Fire protection for rail vehicles (DIN EN 45545-2) R22	HL 1 - HL 3
Fire protection for rail vehicles (DIN EN 45545-2) R23	HL 1 - HL 3
Fire protection for rail vehicles (DIN EN 45545-2) R24	HL 1 - HL 3
Fire protection for rail vehicles (DIN EN 45545-2) R26	HL 1 - HL 3
Calorimetric heat release NFPA 130 (ASTM E 1354)	27,5 MJ/kg
Surface flammability NFPA 130 (ASTM E 162)	passed
Specific optical density of smoke NFPA 130 (ASTM E 662)	passed
Smoke gas toxicity NFPA 130 (SMP 800C)	passed

Electrical tests

Surge voltage test

Test voltage setpoint	7.3 kV
Result	Test passed

Temperature-rise test

Requirement temperature-rise test	Increase in temperature ≤ 45 K
Result	Test passed
Short-time withstand current 1.5 mm ²	0.18 kA
Short-time withstand current 2.5 mm ²	0.3 kA
Result	Test passed

Power-frequency withstand voltage

Test voltage setpoint	1.89 kV
Result	Test passed

Mechanical properties

Mechanical data

Open side panel	No
-----------------	----

Mechanical tests

Mechanical strength

Result	Test passed
--------	-------------

Attachment on the carrier

DIN rail/fixing support	NS 35
Test force setpoint	1 N
Result	Test passed

Test for conductor damage and slackening

Rotation speed	10 rpm
Revolutions	135
Conductor cross section/weight	0.14 mm ² / 0.2 kg
	1.5 mm ² / 0.4 kg
	2.5 mm ² / 0.7 kg
Result	Test passed

Environmental and real-life conditions

Aging

Temperature cycles	192
Result	Test passed

Needle-flame test

Time of exposure	30 s
Result	Test passed

Oscillation/broadband noise

Specification	DIN EN 50155 (VDE 0115-200):2008-03
Spectrum	Service life test category 1, class B, body mounted
Frequency	$f_1 = 5 \text{ Hz}$ to $f_2 = 150 \text{ Hz}$
ASD level	0.964 (m/s ²)/Hz
Acceleration	0.58g
Test duration per axis	5 h
Test directions	X-, Y- and Z-axis
Result	Test passed

Shocks

PTMC 1,5/32-3 /BU - Marshalling patchboard



3270312

<https://www.phoenixcontact.com/us/products/3270312>

Specification	DIN EN 50155 (VDE 0115-200):2008-03
Pulse shape	Half-sine
Acceleration	5g
Shock duration	30 ms
Number of shocks per direction	3
Test directions	X-, Y- and Z-axis (pos. and neg.)
Result	Test passed

Ambient conditions

Ambient temperature (operation)	-60 °C ... 105 °C (max. short-term operating temperature RTI Elec.)
Ambient temperature (storage/transport)	-25 °C ... 60 °C (for a short time, not exceeding 24 h, -60 °C to +70 °C)
Ambient temperature (assembly)	-5 °C ... 70 °C
Ambient temperature (actuation)	-5 °C ... 70 °C
Permissible humidity (storage/transport)	30 % ... 70 %

Standards and regulations

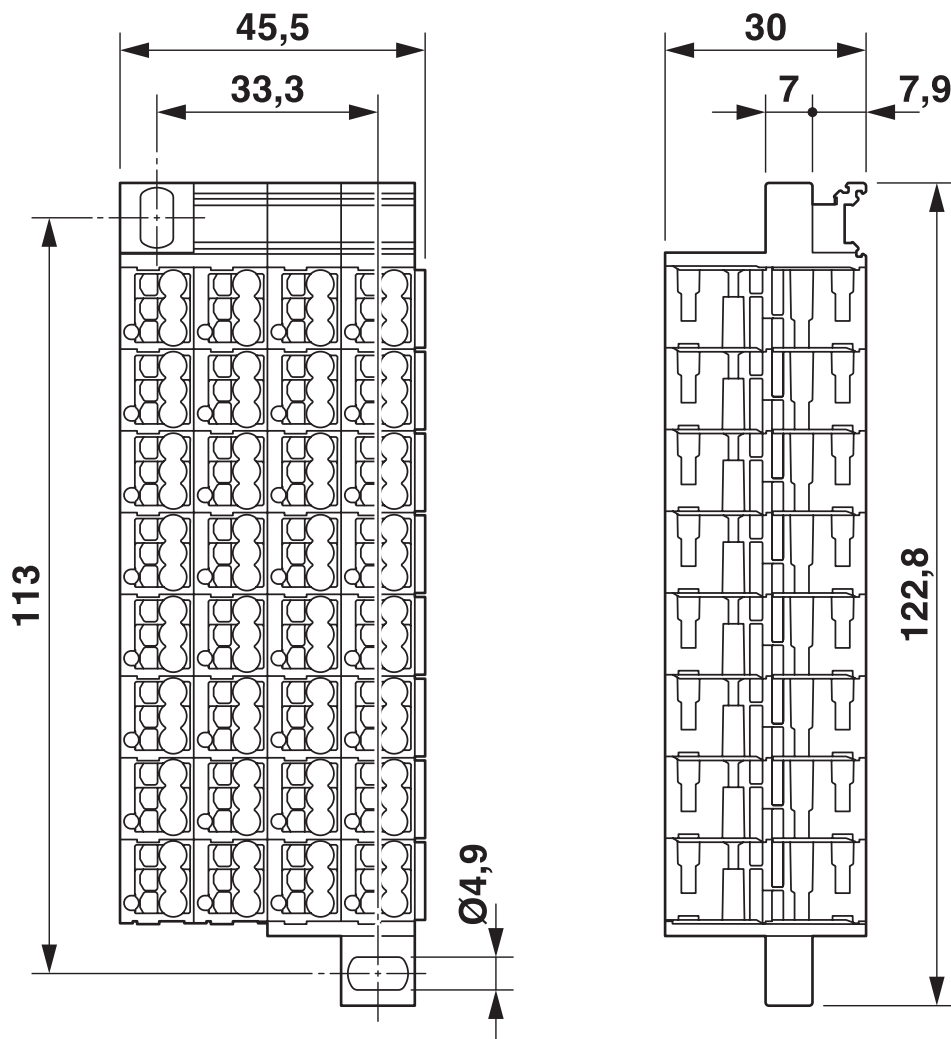
Connection in acc. with standard	IEC 60947-7-1
----------------------------------	---------------

Mounting

Mounting type	Wall mounting
---------------	---------------

Drawings

Dimensional drawing



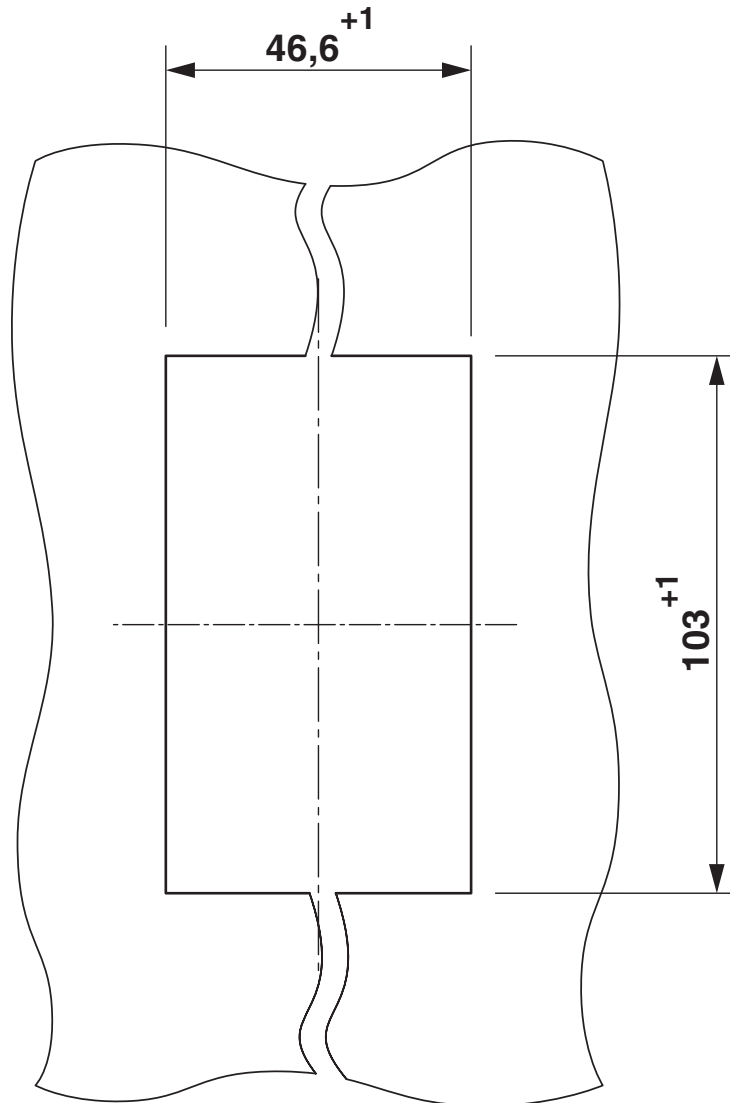
PTMC 1,5/32-3 /BU - Marshalling patchboard



3270312

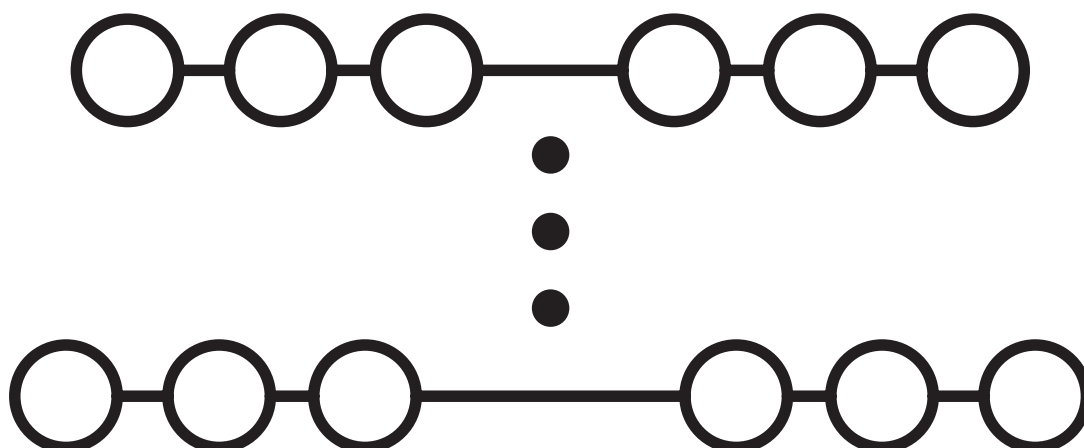
<https://www.phoenixcontact.com/us/products/3270312>

Dimensional drawing



Panel cutout

Circuit diagram



PTMC 1,5/32-3 /BU - Marshalling patchboard




3270312


<https://www.phoenixcontact.com/us/products/3270312>

Approvals

To download certificates, visit the product detail page: <https://www.phoenixcontact.com/us/products/3270312>

 CSA Approval ID: 13631				
	Nominal voltage U_N	Nominal current I_N	Cross section AWG	Cross section mm^2
Use group B	300 V	10 A	24 - 16	-
Use group C	300 V	10 A	24 - 16	-
Use group D	300 V	10 A	24 - 16	-

 EAC Approval ID: RU C-DE.BL08.B.00682				
---	--	--	--	--

 cULus Recognized Approval ID: E60425				
	Nominal voltage U_N	Nominal current I_N	Cross section AWG	Cross section mm^2
Use group B	300 V	10 A	24 - 16	-
Use group C	300 V	10 A	24 - 16	-

3270312

<https://www.phoenixcontact.com/us/products/3270312>

Classifications

ECLASS

ECLASS-11.0	27141120
ECLASS-13.0	27250106

ETIM

ETIM 9.0	EC000897
----------	----------

UNSPSC

UNSPSC 21.0	39121400
-------------	----------

3270312

<https://www.phoenixcontact.com/us/products/3270312>

Environmental product compliance

EU RoHS	
Fulfills EU RoHS substance requirements	Yes, No exemptions
China RoHS	
Environment friendly use period (EFUP)	EFUP-E
	No hazardous substances above the limits
EU REACH SVHC	
REACH candidate substance (CAS No.)	No substance above 0.1 wt%

PTMC 1,5/32-3 /BU - Marshalling patchboard



3270312

<https://www.phoenixcontact.com/us/products/3270312>

Accessories

i Note: Applying some accessories below might limit this product.

DB 50- 90 BU - Wire bridge

2821180

<https://www.phoenixcontact.com/us/products/2821180>

Flexible wire loop bridge, 50-pos., conductor cross-section: 0.5 mm², loop length: 90 mm, ferrule length: 8 mm, color: blue



i Max. current carrying capacity: 8 A

DB 50- 90 BK - Wire bridge

2820916

<https://www.phoenixcontact.com/us/products/2820916>

Flexible wire loop bridge, 50-pos., conductor cross-section: 0.5 mm², loop length: 90 mm, ferrule length: 8 mm, color: black



i Max. current carrying capacity: 8 A

PTMC 1,5/32-3 /BU - Marshalling patchboard



3270312

<https://www.phoenixcontact.com/us/products/3270312>

DB 50- 90 GY - Wire bridge

2820929

<https://www.phoenixcontact.com/us/products/2820929>

Flexible wire loop bridge, 50-pos., conductor cross-section: 0.5 mm^2 , loop length: 90 mm, ferrule length: 8 mm, color: gray



 Max. current carrying capacity: 8 A

DB 50- 90 RD - Wire bridge

2864639

<https://www.phoenixcontact.com/us/products/2864639>

Flexible wire loop bridge, 50-pos., conductor cross-section: 0.5 mm^2 , loop length: 90 mm, ferrule length: 8 mm, color: red



 Max. current carrying capacity: 8 A

PTMC 1,5/32-3 /BU - Marshalling patchboard



3270312

<https://www.phoenixcontact.com/us/products/3270312>

DF-PTMC-O - Flange cover

3270400

<https://www.phoenixcontact.com/us/products/3270400>



Flange cover, for direct mounting on top and for accommodating the marking,
depth: 13 mm, width: 22 mm, height: 30 mm, color: gray

DF-PTMC-U - Flange cover

3270401

<https://www.phoenixcontact.com/us/products/3270401>



Flange cover, for direct mounting below, depth: 12.8 mm, width: 22 mm, height:
29.1 mm, color: gray

PTMC 1,5/32-3 /BU - Marshalling patchboard



3270312

<https://www.phoenixcontact.com/us/products/3270312>

DF-PTMC-NS - Adapter

3270403

<https://www.phoenixcontact.com/us/products/3270403>

Adapter, for mounting on a DIN rail, width: 22 mm, height: 64 mm, color: gray

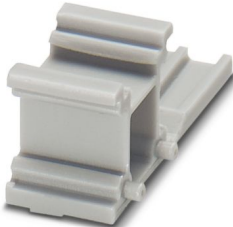


DF-PTMC-ZB - Marker adapter

3270410

<https://www.phoenixcontact.com/us/products/3270410>

Marker adapter, for direct mounting on top and for accommodating the marking, depth: 13 mm, width: 11 mm, height: 30 mm, color: gray



PTMC 1,5/32-3 /BU - Marshalling patchboard



3270312

<https://www.phoenixcontact.com/us/products/3270312>

RPS - Reducing plug

0201647

<https://www.phoenixcontact.com/us/products/0201647>

Reducing plug, number of positions: 1, color: gray



DF-PTMC-3-ZB - Marker adapter

3270405

<https://www.phoenixcontact.com/us/products/3270405>

Marker adapter, for accommodating the marking, depth: 13 mm, width: 12.2 mm, height: 30 mm, color: gray



PTMC 1,5/32-3 /BU - Marshalling patchboard



3270312

<https://www.phoenixcontact.com/us/products/3270312>

MPS-MT - Test plug

0201744

<https://www.phoenixcontact.com/us/products/0201744>



Test plug, with solder connection up to 1 mm² conductor cross section, number of positions: 1, color: gray

MPS-IH WH - Insulating sleeve

0201663

<https://www.phoenixcontact.com/us/products/0201663>

Insulating sleeve, color: white



PTMC 1,5/32-3 /BU - Marshalling patchboard



3270312

<https://www.phoenixcontact.com/us/products/3270312>

MPS-IH RD - Insulating sleeve

0201676

<https://www.phoenixcontact.com/us/products/0201676>

Insulating sleeve, color: red

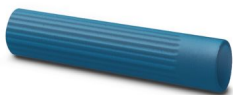


MPS-IH BU - Insulating sleeve

0201689

<https://www.phoenixcontact.com/us/products/0201689>

Insulating sleeve, color: blue



PTMC 1,5/32-3 /BU - Marshalling patchboard



3270312

<https://www.phoenixcontact.com/us/products/3270312>

MPS-IH YE - Insulating sleeve

0201692

<https://www.phoenixcontact.com/us/products/0201692>

Insulating sleeve, color: yellow



MPS-IH GN - Insulating sleeve

0201702

<https://www.phoenixcontact.com/us/products/0201702>

Insulating sleeve, color: green



PTMC 1,5/32-3 /BU - Marshalling patchboard



3270312

<https://www.phoenixcontact.com/us/products/3270312>

MPS-IH GY - Insulating sleeve

0201728

<https://www.phoenixcontact.com/us/products/0201728>

Insulating sleeve, color: gray



MPS-IH BK - Insulating sleeve

0201731

<https://www.phoenixcontact.com/us/products/0201731>

Insulating sleeve, color: black



PTMC 1,5/32-3 /BU - Marshalling patchboard



3270312

<https://www.phoenixcontact.com/us/products/3270312>

SZF 0-0,4X2,5 - Screwdriver

1204504

<https://www.phoenixcontact.com/us/products/1204504>



Actuation tool, for ST terminal blocks, also suitable for use as a bladed screwdriver, size: 0.4 x 2.5 x 75 mm, 2-component grip, with non-slip grip

ST-BW 0 - Actuation tool

1200135

<https://www.phoenixcontact.com/us/products/1200135>



Actuation tool, for all 1.5 mm² spring cages from PT 1,5/S and FT 1,5/S

Phoenix Contact 2024 © - all rights reserved
<https://www.phoenixcontact.com>

Phoenix Contact USA
586 Fulling Mill Road
Middletown, PA 17057, United States
(+717) 944-1300
info@phoenixcon.com