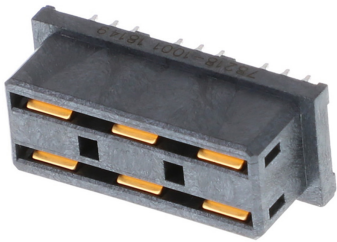




**Part Number :** [782181001](#)  
**Product Description :** Impact 6 Pair, Vertical  
Power Receptacle, Press-Fit, LCP, Glass Filled  
UL94-V0, Black, Lead-Free  
**Series Number :** 78218  
**Status :** Active  
**Product Category :** Backplane Connectors



## Documents & Resources

**Drawings**  
[Drawing 782181001\\_sd.pdf](#)  
[Packaging Design Drawing PK-78218-001-001.pdf](#)

**3D Models and Design Files**  
[3D Model 782181001\\_stp.zip](#)  
[Symbol Footprint Data SYM-78218-1001-001.zip](#)

**Specifications**  
[Application Specification AS-76060-9997-001.pdf](#)  
[Product Specification PS-78213-001-001.pdf](#)

## Product Environment Compliance

### Compliance

GADSL/IMDS	Compliant with Exemption 44; 34; 33
China RoHS	
EU ELV	Not Relevant
Low-Halogen Status	Low-Halogen per IEC 61249-2-21
REACH SVHC	Not Contained per D(2024)4144-DC (27 June 2024)
EU RoHS	Compliant per EU 2015/863

### [Multiple Part Product Compliance Statements](#)

- Eu RoHS
- REACH SVHC
- Low-Halogen

### [Multiple Part Industry Compliance Documents](#)

- IPC 1752A Class C
- IPC 1752A Class D
- Molex Product Compliance Declaration
- IEC-62474
- chemSHERPA (xml)

## EU RoHS Certificate of Compliance

---

### Part Details

#### General

Status	Active
Category	Backplane Connectors
Series	78218
Description	Impact 6 Pair, Vertical Power Receptacle, Press-Fit, LCP, Glass Filled UL94-V0, Black, Lead-Free
Application	Conventional, Mezzanine, Orthogonal Midplane
Component Type	Power Receptacle
Product Family	Impact Backplane Connector and Cable Assembly System
Product Name	Impact
UPC	883906525965

#### Agency

UL	E29179
----	--------

#### Electrical

Current - Maximum per Contact	20.0A
Data Rate	N/A
Shield Type	N/A
Shielded	No
Voltage - Maximum	250V

#### Physical

Circuits (Loaded)	6
Circuits (maximum)	6
Color - Resin	Black

Durability (mating cycles max)	200
First Mate / Last Break	No
Flammability	94V-0
Guide to Mating Part	No
Keying to Mating Part	None
Material - Metal	Copper Alloy
Material - Plating Mating	Gold
Material - Plating Termination	Tin
Material - Resin	High Temperature Thermoplastic
Net Weight	3.762/g
Number of Columns	N/A
Number of Pairs	6
Number of Rows	3
Orientation	Vertical
Packaging Type	Tray
PC Tail Length	2.50mm
PCB Locator	No
PCB Retention	None
PCB Thickness - Recommended	1.60mm
Pitch - Mating Interface	5.20mm
Pitch - Termination Interface	2.00mm, 3.20mm
Plating min - Mating	0.762μm
Plating min - Termination	2.540μm
Polarized to PCB	No
Stackable	No
Temperature Range - Operating	-55° to +85°C
Termination Interface Style	Through Hole - Compliant Pin

## Solder Process Data

Lead-Free Process Capability	N/A
------------------------------	-----

---

## Mates With / Use With

### Mates with Part(s)

Description	Part Number
-------------	-------------

Impact 6 Pair, Right-Angle Power Header, Press-Fit, Blade A1 & A2; B1 & B2 and C1 & C2 Length 6.90mm, LCP, Glass Filled, UL94-V0, Black, Tray Packaging, Lead-Free	<u>782171011</u>
--	------------------

---

This document was generated on Sep 24, 2024