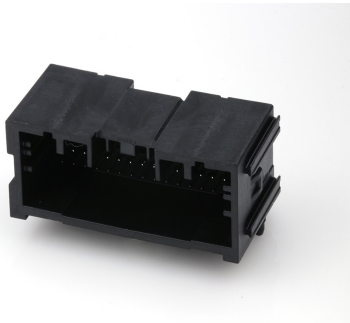




**Part Number :** [349610345](#)  
**Product Description :** Mini50 Unsealed Right-Angle Hybrid Header, UL 94 HB, 34 Circuits, Polarization C, Dark Gray, Tray  
**Series Number :** 34961  
**Status :** Active  
**Product Category :** PCB Headers and Receptacles



## Documents & Resources

**Drawings**  
[Drawing 349610345\\_sd.pdf](#)  
[Packaging Design Drawing PK-31302-070-001.pdf](#)

**3D Models and Design Files**  
[3D Model 349610345\\_stp.zip](#)

**Specifications**  
[Test Summary TS-34961-001-001.pdf](#)

## Product Environment Compliance

### Compliance

GADSL/IMDS	Compliant with Exemption 44; 33
China RoHS	
EU ELV	Compliant per 2000/53/EC
Low-Halogen Status	Low-Halogen per IEC 61249-2-21
REACH SVHC	Not Contained per D(2024)4144-DC (27 June 2024)
EU RoHS	Compliant per EU 2015/863

Multiple Part Product Compliance Statements  
- Eu RoHS  
- REACH SVHC  
- Low-Halogen

Multiple Part Industry Compliance Documents  
- IPC 1752A Class C  
- IPC 1752A Class D

- Molex Product Compliance Declaration
- IEC-62474
- chemSHERPA (xml)

## EU RoHS Certificate of Compliance

---

### Part Details

#### General

Status	Active
Category	PCB Headers and Receptacles
Series	34961
Description	Mini50 Unsealed Right-Angle Hybrid Header, UL 94 HB, 34 Circuits, Polarization C, Dark Gray, Tray
Application	Automotive, Power, Signal, Wire-to-Board
Comments	30 x 0.50mm blades = 4.0A; 4 x 1.20mm blades = 16.0A
Component Type	PCB Header
Product Family	Mini50 Connection Systems
Product Name	Mini50
UPC	195842848368

#### Electrical

Current - Maximum per Contact	16.0A, 4.0A
Voltage - Maximum	500V DC

#### Physical

Breakaway	No
Circuits (Loaded)	34
Circuits (maximum)	34
Color - Resin	Gray (Dark)
Durability (mating cycles max)	10
First Mate / Last Break	No
Glow-Wire Capable	No
Guide to Mating Part	No
Keying to Mating Part	Yes

Lock to Mating Part	Yes
Material - Metal	Brass
Material - Plating Mating	Tin
Material - Plating Termination	Tin
Material - Resin	SPS
Net Weight	6.700/g
Number of Rows	3
Orientation	Right Angle
Packaging Type	Tray
PC Tail Length	2.75mm
PCB Locator	Yes
PCB Retention	None
Pitch - Mating Interface	2.00mm
Polarized to Mating Part	Yes
Polarized to PCB	Yes
Stackable	Yes
Temperature Range - Operating	-40° to +105°C
Termination Interface Style	Through Hole

---

## Mates With / Use With

### Mates with Part(s)

Description	Part Number
Mini50 Unsealed Receptacle, 3 Rows, with CPA, 34 Circuits, Polarization Option C, Dark Gray	<u>349590342</u>
Mini50 Unsealed Receptacle, 3 Rows, without CPA, 34 Circuits, Polarization Option C, Dark Gray	<u>349590349</u>