

# Actuator

704.502.000I

Distribution by  
DigiKey

**DigiKey**



<https://digikey.eao.com/p/704.502.000I>

Your product:

---



## 704.502.000I Actuator

### FRONT

Front bezel colour:	Black
Front bezel material:	Plastic
Front dimension:	35 mm x 35 mm

### MOUNTING

Design:	flush
Mounting cut-out:	30 mm x 30 mm

### OPERATING-/INDICATION PART

Lever shape:	short
Lever colour:	Black
Lever material:	plastic

### ELECTRICAL CHARACTERISTICS

Standards:	The switches comply with the "Standards for low-voltage switching devices" DIN EN 60947-1
------------	---

### MECHANICAL CHARACTERISTIC

<b>Weight:</b>	0.056 kg
<b>Mechanical lifetime:</b>	≤2.5 Mio. cycles of operation
<b>Switching angle:</b>	42° left / 42° right
<b>Switching positions:</b>	3 positions
<b>Switching action:</b>	Maintained - Rest - Maintained

## AMBIENT CONDITION

<b>IP Protection:</b>	IP65 front side
<b>Operating temperature:</b>	– 40 °C ... + 55 °C
<b>Storage temperature:</b>	– 40 °C ... + 85 °C

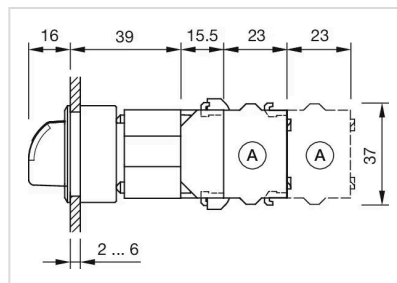
## OTHER

**Short Description:** Actuator, 30 mm x 30 mm, 35 mm x 35 mm, optional illuminative, Black, short, Black, Plastic, Maintained - Rest - Maintained

**Hints:** Max. 3 switching elements can be clipped on

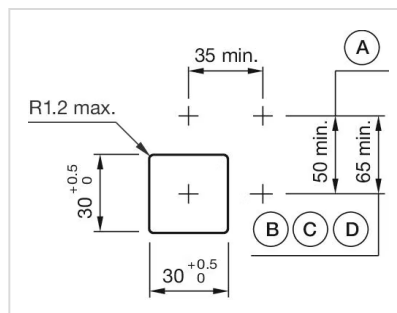
**max. number of switching elements:** 3

**Dimension drawings:**



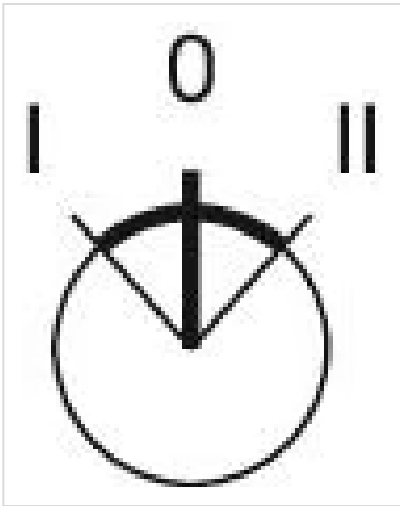
A = Screw terminal

**Mounting cut-outs:**



A = Screw terminal  
 B = Push-in terminal (PIT)  
 C = Plug-in terminal 6.3 mm x 0.8 mm  
 D = Double plug-in terminal 6.3 mm x 0.8 mm

**Switching positions:**



Wiring diagrams:

