

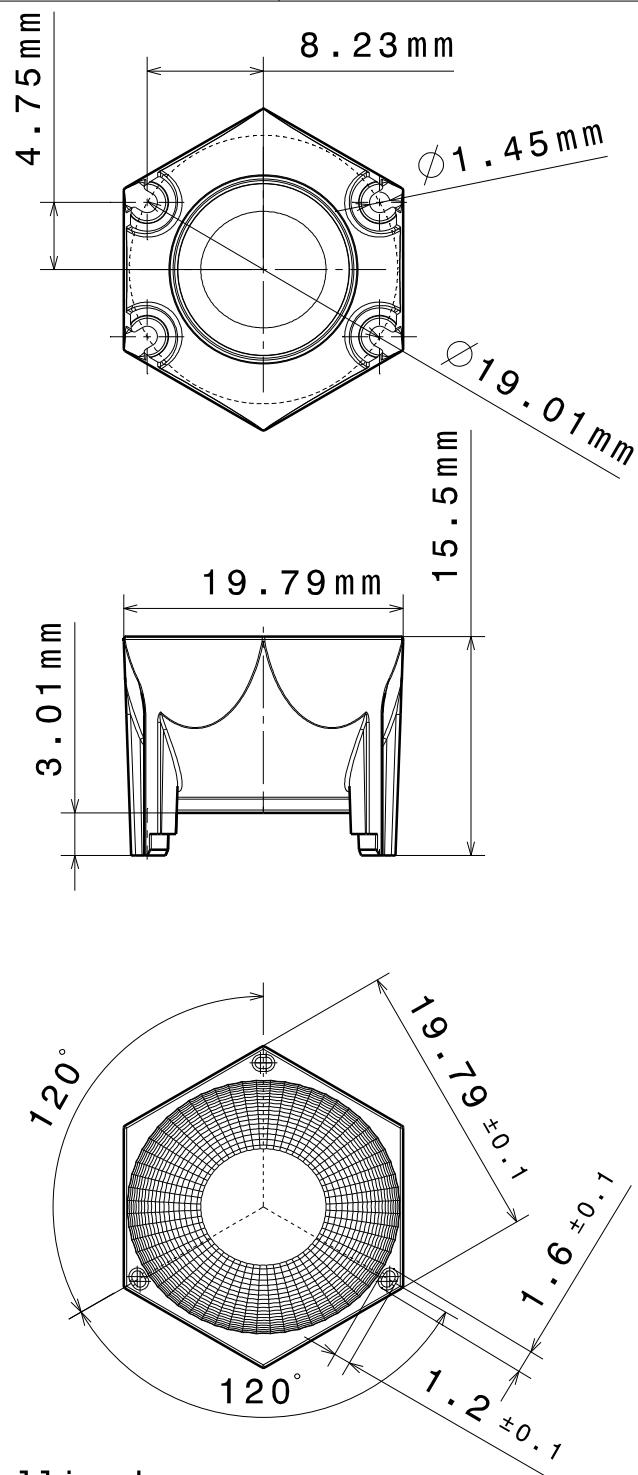
## DETAILS

<b>Product Number</b>	C10437_BOOMERANG
<b>Family</b>	Boomerang
<b>Type</b>	Reflector
<b>Color</b>	metal
<b>Diameter</b>	19,8 mm
<b>Height</b>	15,5 mm
<b>Style</b>	hexag
<b>Optic Material</b>	PC
<b>Holder Material</b>	
<b>Fastening</b>	glue
<b>Status</b>	production ready
<b>ROHS Compliant</b>	Yes
<b>Date Updated</b>	3/03/2014



## OPTICAL PROPERTIES

LED	Viewing	Light	Effi-		Connector
	Angle	Beam	ciency	cd/lm	
LZ1 (00xW00)	28 deg	Spot	-	-	-
LZ4 (00xW00)	32 deg	Spot	-	-	-
Ostar Lighting	28 deg	Spot	-	2.000	-



Material: ABS metallized

This drawing is our property.  
It can't be reproduced  
or communicated without  
our written agreement.



Ledil Oy  
Tehdaskatu 13  
FIN-24100 SALO  
Finland

DRAWING TITLE

Boomerang-reflector

DRAWN BY  
RM

DATE  
21.11.2007

CHECKED BY  
HH

DATE  
21.11.2007

DESIGNED BY  
HH

DATE  
21.11.2007

SIZE  
A4

DRAWING NUMBER  
10437

REV  
0.1

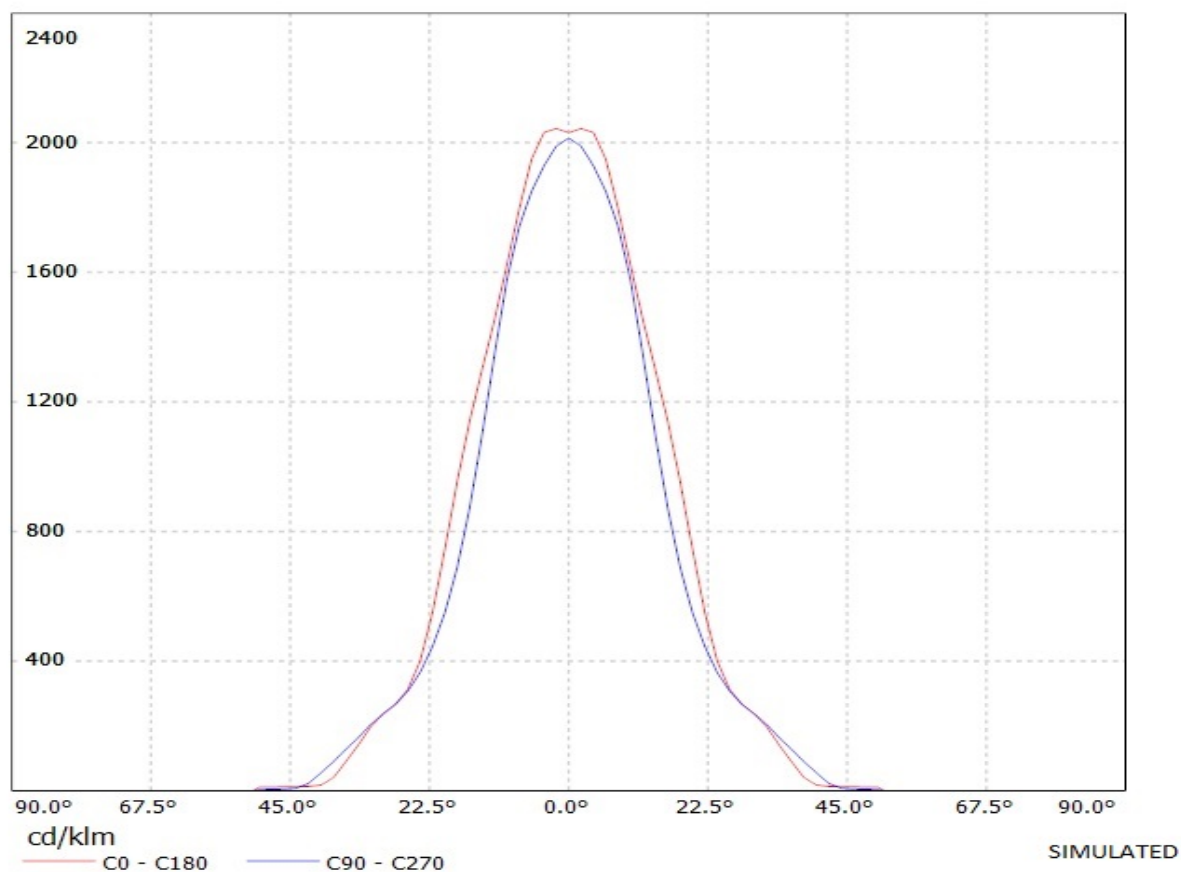
SCALE 1:1 WEIGHT(g)

SHEET 1/1

## Ledil Oy C10437\_Boomerang-reflector C10437\_Boomerang-reflector / LDC (Linear)

Luminaire: Ledil Oy C10437\_Boomerang-reflector C10437\_Boomerang-reflector

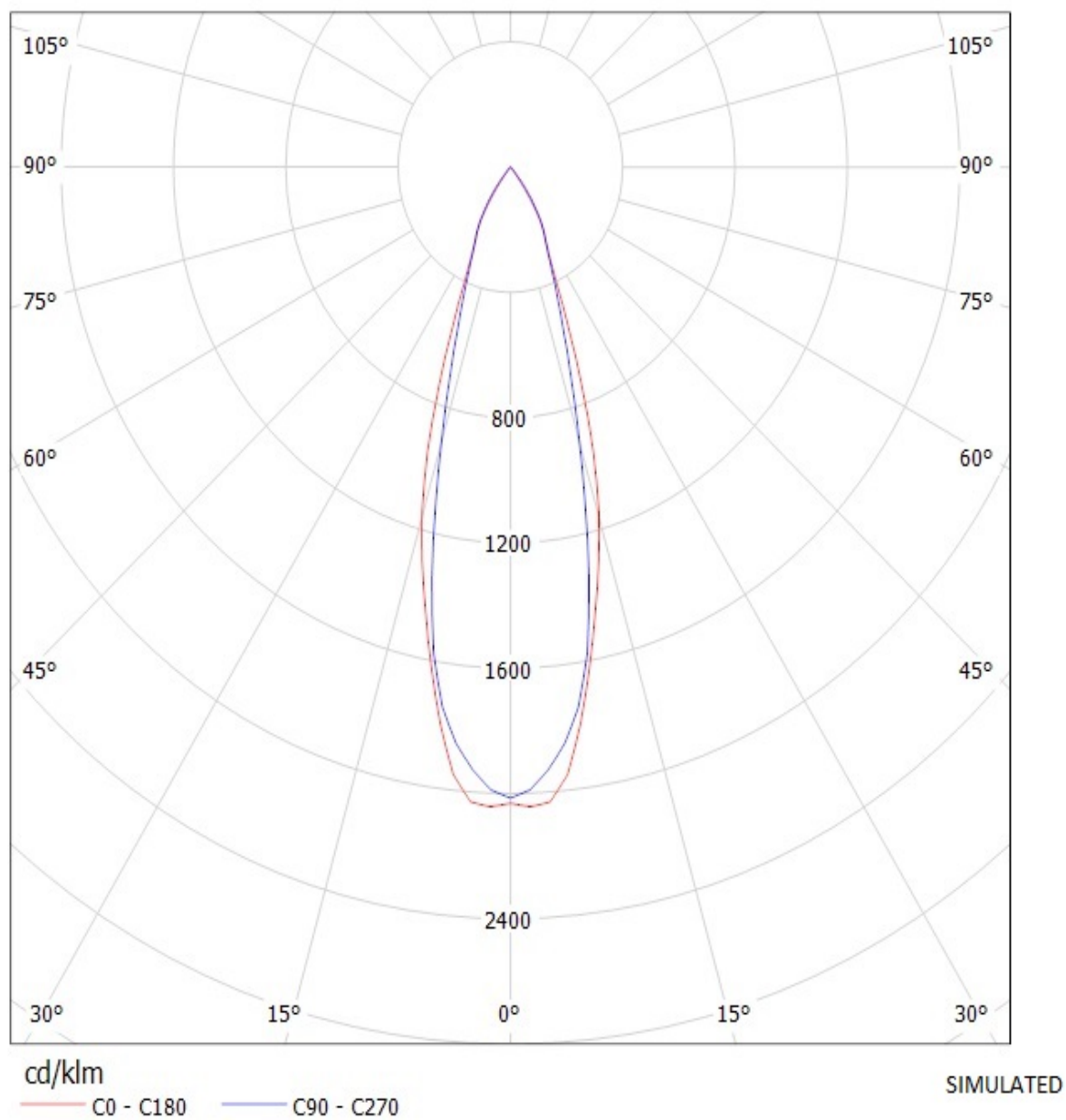
Lamps: 1 x Osram Ostar (6chip silic



## Ledil Oy C10437\_Boomerang-reflector C10437\_Boomerang-reflector / LDC (Polar)

Luminaire: Ledil Oy C10437\_Boomerang-reflector C10437\_Boomerang-reflector

Lamps: 1 x Osram Ostar (6chip silic



**NOTE: The typical divergence will be changed by different color, chip size and chip position tolerance. The typical total divergence is the full angle measured where the luminous intensity is half of the peak value.**