

Actuator

17-090352

Distribution by
DigiKey**DigiKey**<https://digikey.eao.com/p/17-090352>

Your product:



17-090352 Actuator

FRONT

Front form:	round
Reflector:	Metal, polished chromium-plated, internal
Front dimension:	Ø 9,5 mm

MOUNTING

Mounting cut-out:	Ø 8 mm
Design:	raised

OPERATING-/INDICATION PART

Illumination colour:	Yellow
----------------------	--------

ELECTRICAL CHARACTERISTICS

Lumi. Intensity:	1100 mcd
Polarity:	Anode (+) Brass plug-in connector Cathode (-) Brass tinned plug-in connector
Operating voltage:	24 - 17 V AC/DC ± 10 %
Operation current:	9 mA ± 15 %

MECHANICAL CHARATERISTIC

Terminal:	Plug-in terminal, 2.8 x 0.8 mm
Tightening torque:	Fixing nut max. 0.2 Nm
Weight:	0.005 kg

AMBIENT CONDITION

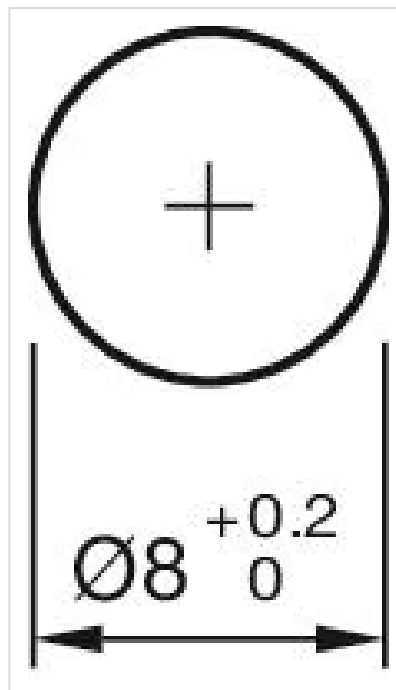
Storage temperature:	– 25 °C ... + 80 °C
IP Protection:	IP40 front side, IP65 front side, according to IEC 60529
Operating temperature:	– 20 °C ... + 60 °C

CERTIFICATE

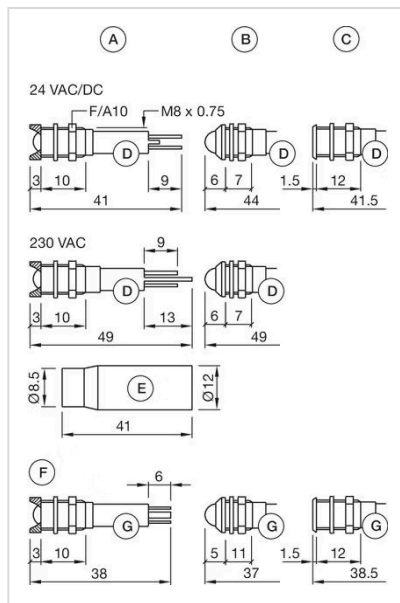
Conformities:	2011 / 65 / EC (RoHS), 2014 / 35 / EU (230 VAC)
Approbations:	UL

OTHER

Short Description:	Actuator, Ø 8 mm, Ø 9,5 mm, round, Plug-in terminal, 2.8 x 0.8 mm, Yellow
Hints:	Connectors: Brass terminal = anode (+); brass tinned terminal = cathode (-), IP67 front side gap between LED and reflector and gap between reflector and frontplate sealed to IP67 when using the supplied gasket., The plastic is limited resistant to chemicals.
Kind of illumination:	Single-LED
Mounting cut-outs:	



Dimension drawings:



A = interior
 B = exterior
 C = superflat
 D = Plug-in terminal 2.8 mm x 0.8 mm
 E = Multi-colour
 F = Protection tube
 G = Plug-in terminal 2.0 mm x 0.5 mm

Wiring diagrams:

