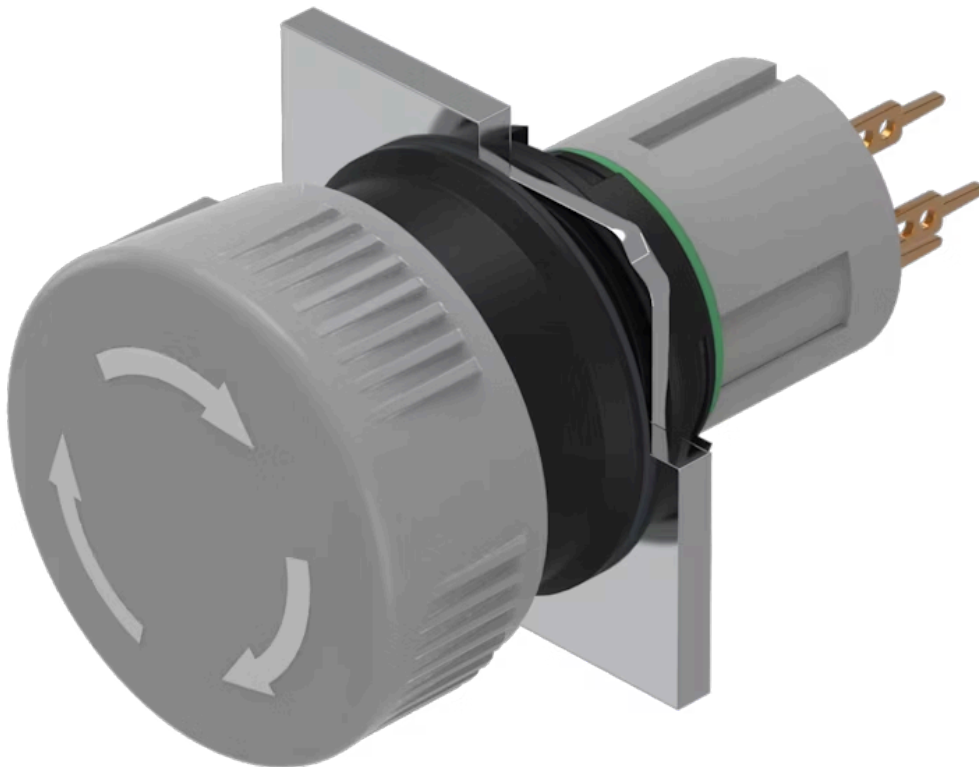


# Actuator

51-  
256.0268

Distribution by  
DigiKey

**DigiKey**



<https://digikey.eao.com/p/51-256.0268>

Your product:

---



## 51-256.0268 Actuator

### FRONT

**Front dimension:** Ø 24,5 mm

### MOUNTING

**Design:** raised

### OPERATING-/INDICATION PART

**Lens colour:** Grey

**Lens shape:** mushroom-head

**Lens illumination:** non illuminative

**Lens optics:** opaque

**Lens material:** Plastic

### ELECTRICAL CHARACTERISTICS

**Switching voltage and switching current:** 100 mA at 42 VAC/VDC

**Contacts:** 1 NC

### MECHANICAL CHARACTERISTIC

**Tightening torque:** Fixing nut max. 0.5 Nm

**Switching action:** Maintained

**Contact material:** Gold

**Operating force:** 1,8 ... 3,5 N

**Terminal:** Universal terminal, 2 x 0.5 mm

**Weight:** 0.011 kg

**Switching system:** Low-level element

**Mechanical lifetime:** 1 Mio. cycles of operation

**Operating Travel:** 3 mm

**Switching system:** This low-level switching element was designed for switching low powers in electronic circuits. The mechanism assures reliable switching of loads ranging from a few  $\mu\text{A}/\mu\text{V}$  up to 100 mA/ 42 VAC/DC.  
Single-break momentary contact, as normally open or normally closed with 4 independent points of contact. 2 momentary contacts per switching element; combination of normally open and normally closed is possible.  
Special features are the long life, extremely short rebound time and stable contact resistance.

## AMBIENT CONDITION

**Storage temperature:** – 40 °C ... + 85 °C

**IP front protection:** IP65, according to DIN EN 60529

**Operating temperature:** – 25 °C ... + 55 °C

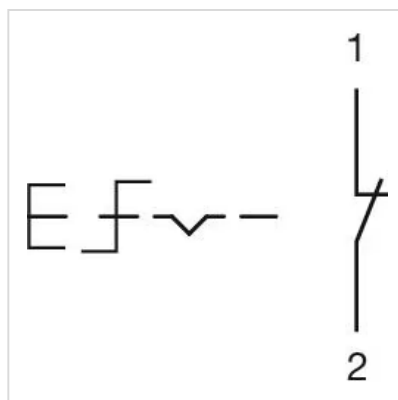
## OTHER

**Short Description:** Actuator, Ø 24,5 mm, mushroom-head, non illuminative, Grey, Plastic, opaque, 1 NC, Maintained, Universal terminal, 2 x 0.5 mm, IP65, according to DIN EN 60529

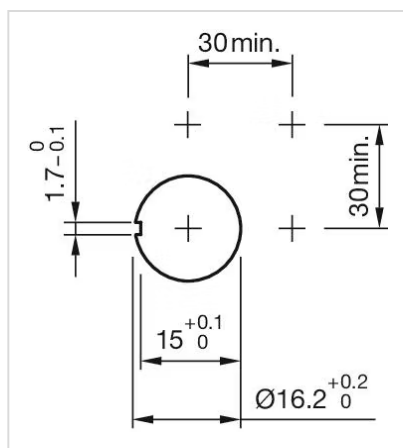
**Housing colour:** Black

**Hints:** Marking arrows

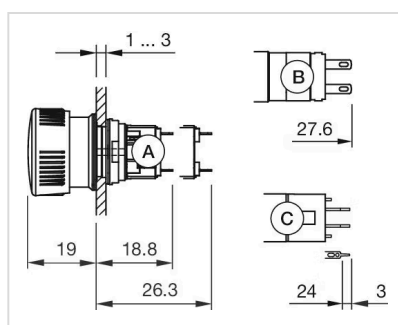
**Wiring diagrams:**



**Mounting cut-outs:**



#### Dimension drawings:



A = Solder terminal  
 B = Plug-in terminal  $2.8 \text{ mm} \times 0.5 \text{ mm}$   
 C = Universal terminal  $2.0 \text{ mm} \times 0.5 \text{ mm}$