

FCi  
Copyright FCI.

FRONT ACCESSORY	Blank Without	L insert M3 O insert UNC 4.40	V female screw UNC 4.40	Blank Without	L insert M3 O insert UNC 4.40	V female screw UNC 4.40
PCB ACCESSORIES	C Without	C Without	C Without	M Metal bracket	M Metal bracket	M Metal bracket

FRONT ACCESSORY	Blank Without	L insert M3 O insert UNC 4.40	V female screw UNC 4.40
PCB ACCESSORIES	Blank Plastic bracket	Blank Plastic bracket	Blank Plastic bracket

www.fciconnect.com			surface - ISO 1302	tolerance std ISO 406 ISO 1101	projection ISO 1101	mm
			TOLERANCES UNLESS OTHERWISE SPECIFIED			
Dr	M PESSON	2006/11/14	ANGULAR	0.X ±0.3	size A2	Scale 2:1
Eng	P LEGARE	2006/11/14	LINEAR	0.XX ±0.1		
Chr	P LEGARE	2006/11/14	0° ±2°	0.XXX ±0.05	ECN LS06-0174	
Appr	P LEGARE	2006/11/14	Product family -			Spec ref
FCi			SUB FEMALE DM HE508 series			Rev. A
			with right angle contact			
			catalog no -			
			CUSTOMER			sheet 2 of 9

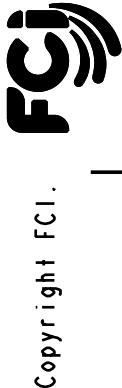
PART NUMBER	FRONT ACCESSORY	PCB ACCESSORY
D*MxxS500CN	without	without
D*MLxxS500CN	insert M3	without
D*MOxxS500CN	insert UNC 4.40	without
D*MVxxS500CN	female screw UNC 4.40	without
D*MxxS500MN	without	Metal bracket
D*MLxxS500MN	insert M3	Metal bracket
D*MOxxS500MN	insert UNC 4.40	Metal bracket
D*MVxxS500MN	female screw UNC 4.40	Metal bracket
D*MxxS500N	without	Plastic bracket
D*MLxxS500N	insert M3	Plastic bracket
D*MOxxS500N	insert UNC 4.40	Plastic bracket
D*MVxxS500N	female screw UNC 4.40	Plastic bracket

shell size	Contact number
*	XX
E	09
A	15
B	25
C	37
D	50

PART NUMBER	FRONT ACCESSORY	PCB ACCESSORY
D*MxxS543CN	without	without
D*MLxxS543CN	insert M3	without
D*MOxxS543CN	insert UNC 4.40	without
D*MVxxS543CN	female screw UNC 4.40	without
D*MxxS543MN	without	Metal bracket
D*MLxxS543MN	insert M3	Metal bracket
D*MOxxS543MN	insert UNC 4.40	Metal bracket
D*MVxxS543MN	female screw UNC 4.40	Metal bracket
D*MxxS543N	without	Plastic bracket
D*MLxxS543N	insert M3	Plastic bracket
D*MOxxS543N	insert UNC 4.40	Plastic bracket
D*MVxxS543N	female screw UNC 4.40	Plastic bracket

CROSS REFERENCES HE508 and FCI

HE508 P/N	FCI P/N	FRONT ACCESSORY	PCB ACCESSORY
HE508PxxVS6	D*MxxS500N	without	Plastic bracket
HE508MxxVS6	D*MxxS500MN	without	Metal bravket



www.fciconnect.com

surface

ISO 1302

-

tolerance std

ISO 406

ISO 1101

projection

mm

TOLERANCES UNLESS OTHERWISE SPECIFIED

Dr

M PESSON

2006/11/14

Eng

P LEGARE

2006/11/14

Chr

P LEGARE

2006/11/14

Appr

P LEGARE

2006/11/14

ANGULAR

0° ±2°

LINEAR

0.X ±0.3

0.XX ±0.1

0.XXX ±0.05

size A2

Scale 2:1

ECN LS06-0174

- Spec ref

title SUB FEMALE DM HE508 series

with right angle contact

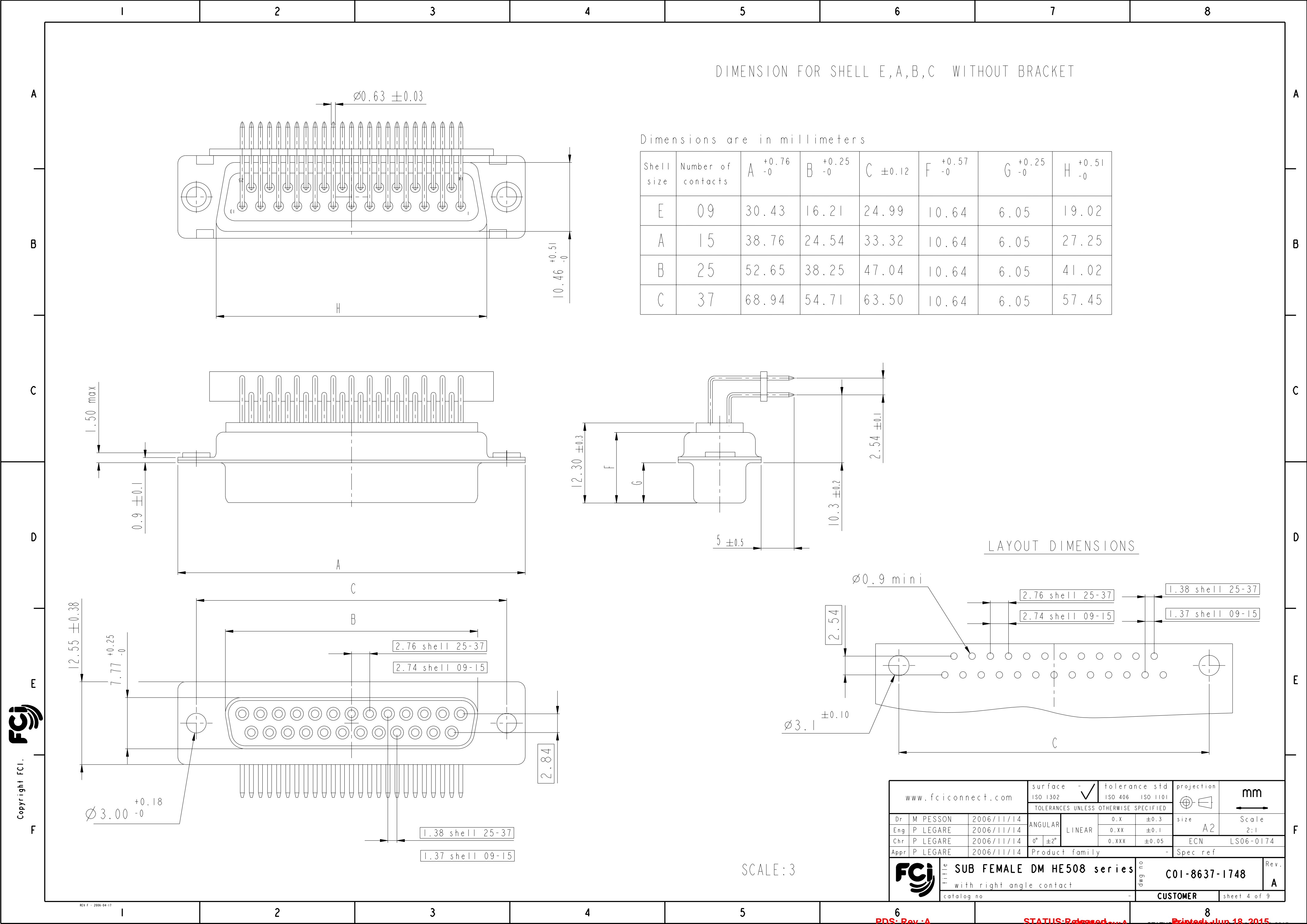
catalog no -

dwg no C01-8637-1748

Rev. A

CUSTOMER

sheet 3 of 9



DIMENSION FOR SHELL E,A,B,C WITHOUT BRACKET

Dimensions are in millimeters

Shell size	Number of contacts	A <sup>+0.76 -0</sup>	B <sup>+0.25 -0</sup>	C <sup>±0.12</sup>	F <sup>+0.57 -0</sup>	G <sup>+0.25 -0</sup>	H <sup>+0.51 -0</sup>
E	09	30.43	16.21	24.99	10.64	6.05	19.02
A	15	38.76	24.54	33.32	10.64	6.05	27.25
B	25	52.65	38.25	47.04	10.64	6.05	41.02
C	37	68.94	54.71	63.50	10.64	6.05	57.45

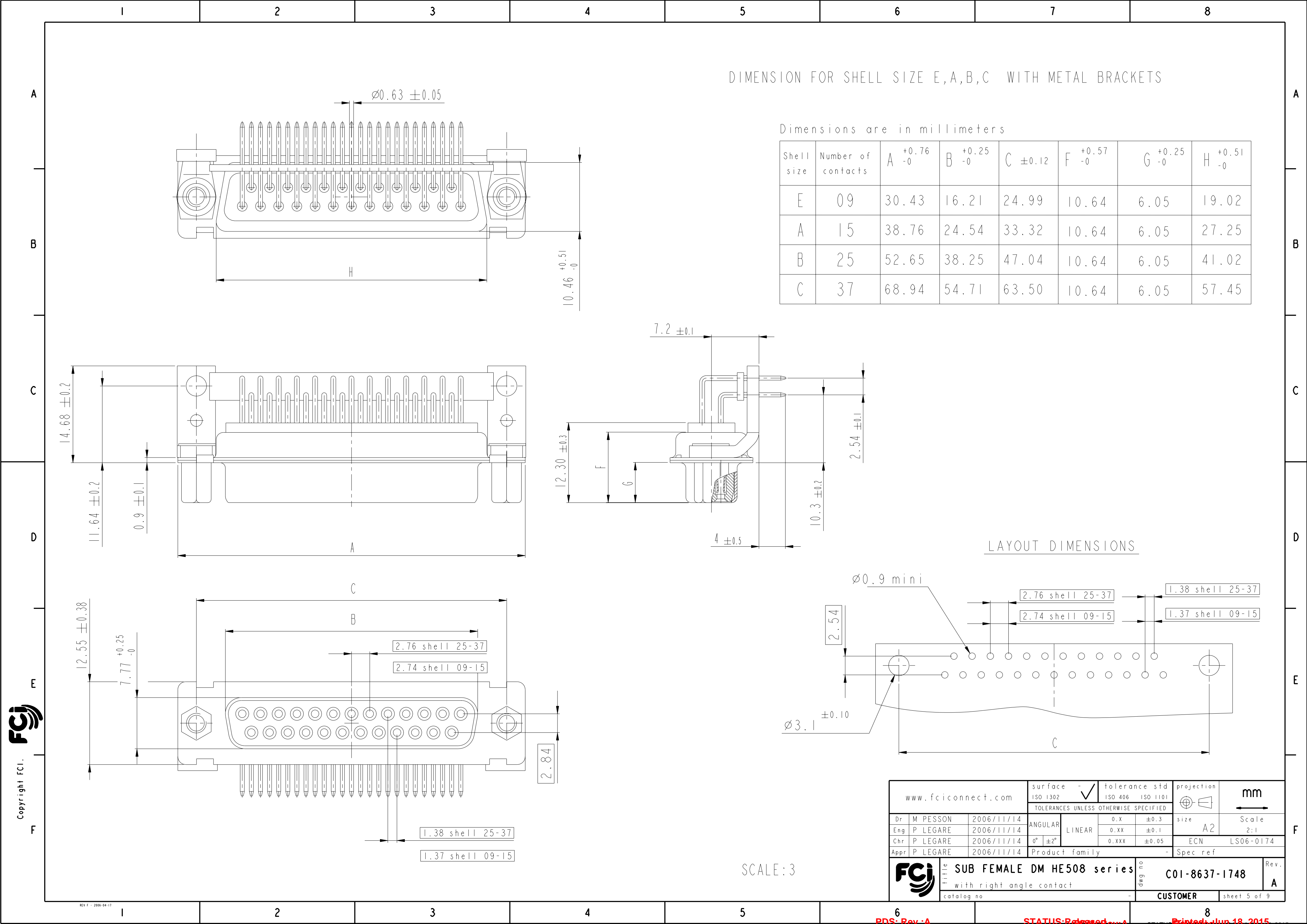
LAYOUT DIMENSIONS

SCALE: 3

[www.fciconnect.com](http://www.fciconnect.com)

surface	-	tolerance std	projection	mm				
ISO 1302	✓	ISO 406 ISO 1101						
TOLERANCES UNLESS OTHERWISE SPECIFIED								
Dr	M PESSON	2006/11/14	ANGULAR	0.X	±0.3	size	A2	Scale
Eng	P LEGARE	2006/11/14	LINEAR	0.XX	±0.1			
Chr	P LEGARE	2006/11/14	0° ±2°	0.XXX	±0.05			
Appr	P LEGARE	2006/11/14	Product family			-	ECN	LS06-0174
						-	Spec ref	

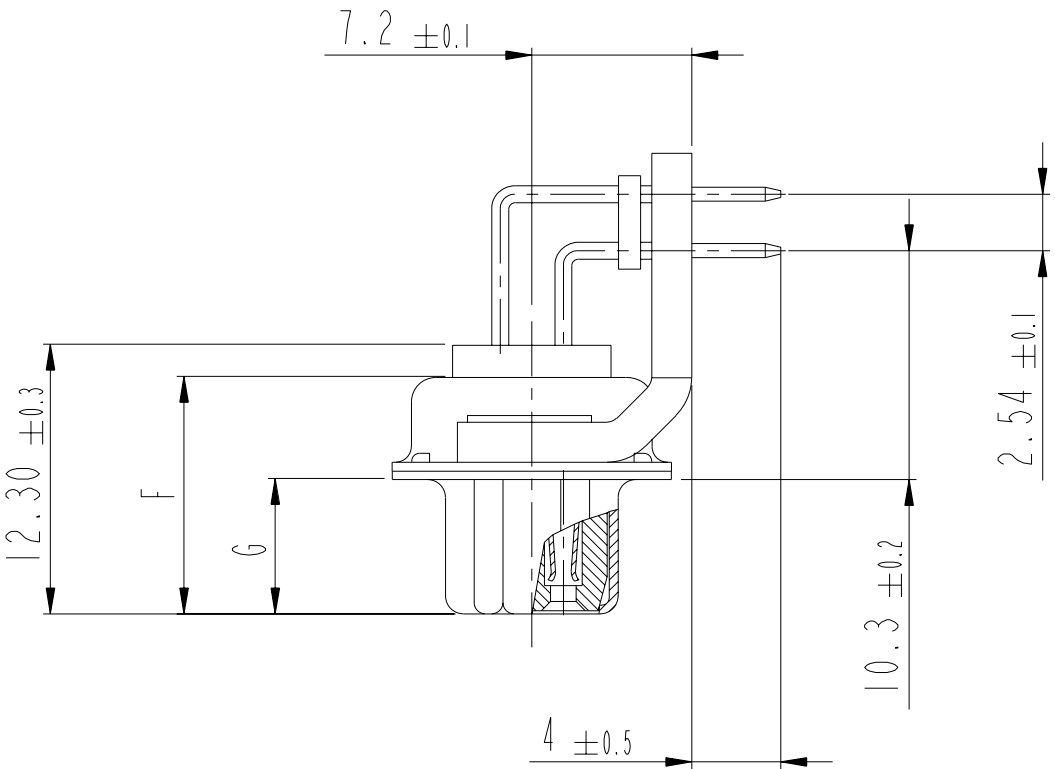
<b>FCi</b>	title	SUB FEMALE DM HE508 series	dwg no	C01-8637-1748	Rev.
		with right angle contact			A
	catalog no	-	CUSTOMER	sheet 4 of 9	



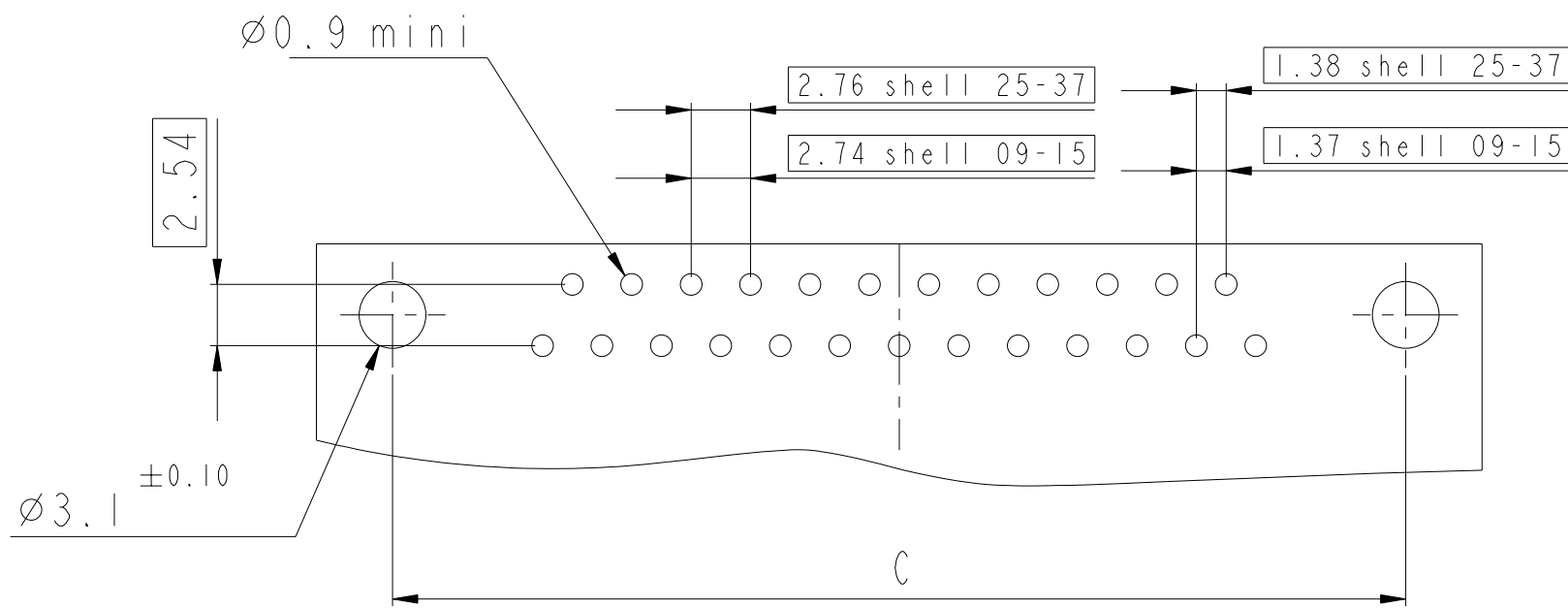
DIMENSION FOR SHELL SIZE E,A,B,C WITH METAL BRACKETS

Dimensions are in millimeters

Shell size	Number of contacts	A <sup>+0.76 -0</sup>	B <sup>+0.25 -0</sup>	C $\pm 0.12$	F <sup>+0.57 -0</sup>	G <sup>+0.25 -0</sup>	H <sup>+0.51 -0</sup>
E	09	30.43	16.21	24.99	10.64	6.05	19.02
A	15	38.76	24.54	33.32	10.64	6.05	27.25
B	25	52.65	38.25	47.04	10.64	6.05	41.02
C	37	68.94	54.71	63.50	10.64	6.05	57.45



LAYOUT DIMENSIONS

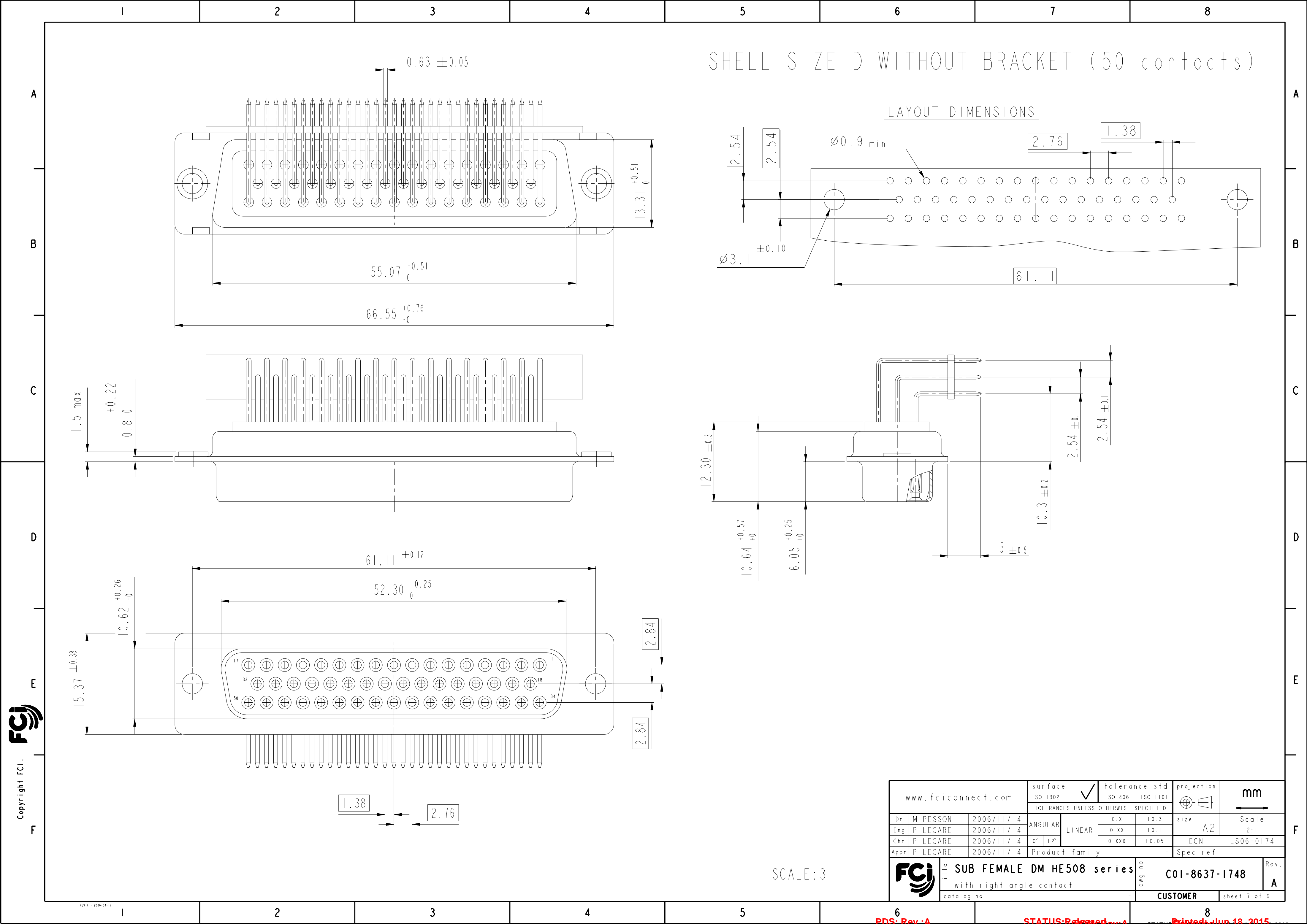


SCALE: 3

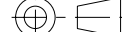


www.fciconnect.com			surface ISO 1302	-	tolerance std ISO 406	ISO 1101	projection ISO 1101	mm
			TOLERANCES UNLESS OTHERWISE SPECIFIED					
Dr	M PESSON	2006/11/14	ANGULAR	LINEAR	0.X	$\pm 0.3$	size	Scale
Eng	P LEGARE	2006/11/14			0.XX	$\pm 0.1$	A2	2:1
Chr	P LEGARE	2006/11/14	0°	$\pm 2^\circ$	0.XXX	$\pm 0.05$	ECN	LS06-0174
Appr	P LEGARE	2006/11/14	Product family			-	Spec ref	
FCI			SUB FEMALE DM HE508 series			dwg no	C01-8637-1748	Rev.
			with right angle contact					A
			catalog no			-	CUSTOMER	sheet 5 of 9

Printed: Jun 18, 2015



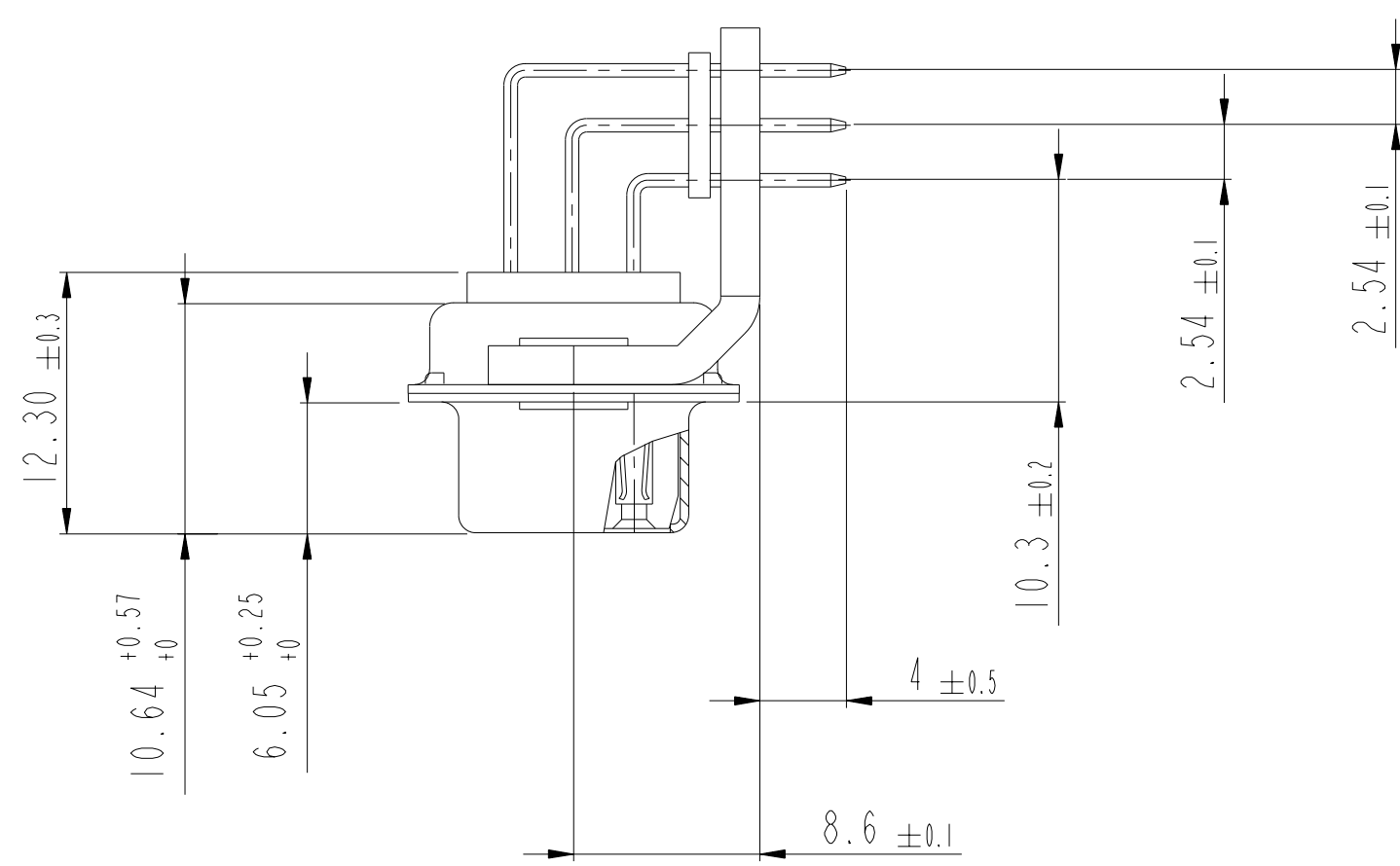
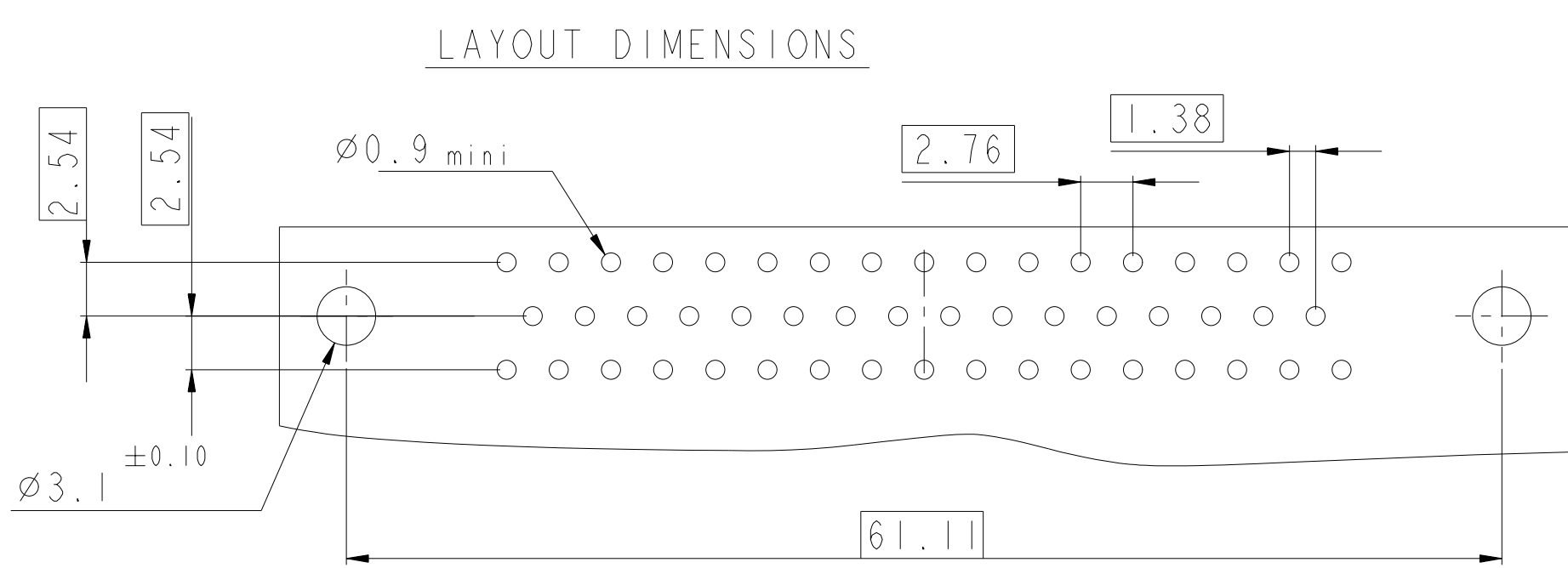
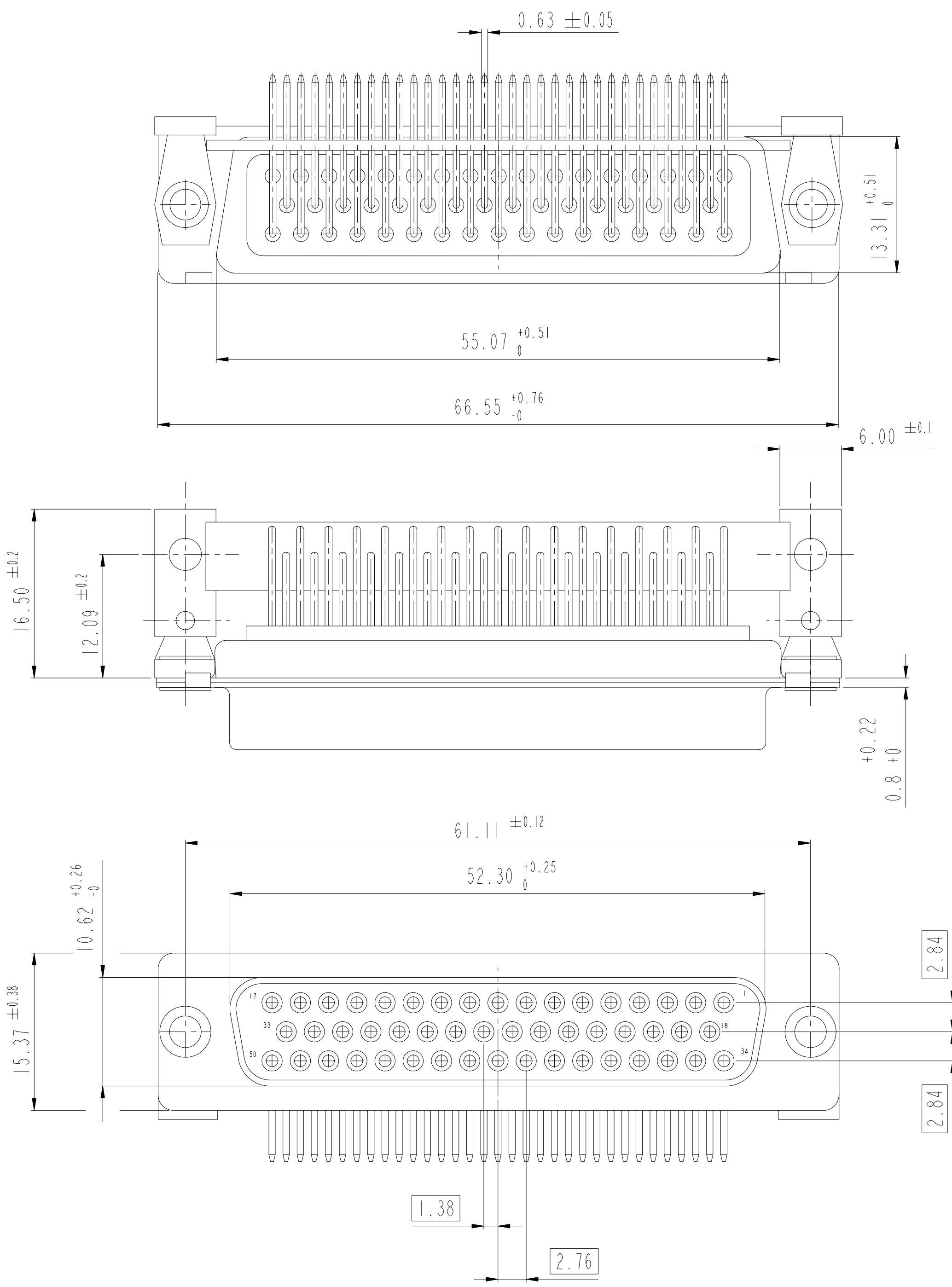


Copyright FCi.

www.fciconnect.com			surface - <input checked="" type="checkbox"/> ISO 1302		tolerance std - <input checked="" type="checkbox"/> ISO 406 <input checked="" type="checkbox"/> ISO 1101		projection 		mm 	
			TOLERANCES UNLESS OTHERWISE SPECIFIED							
Dr	M PESSON	2006/11/14	ANGULAR	LINEAR	0.X ±0.3		size A2	Scale 2:1		
Eng	P LEGARE	2006/11/14			0.XX ±0.1					
Chr	P LEGARE	2006/11/14			0.XXX ±0.05			ECN LS06-0174		
Appr	P LEGARE	2006/11/14	Product family				-	Spec ref		
		title	SUB FEMALE DM HE508 series				dwg no	C01-8637-1748		Rev. A
			with right angle contact							
			catalog no							
							-	CUSTOMER		sheet 7 of 9



SHELL SIZE D WITH METAL BRACKET(50 contacts)

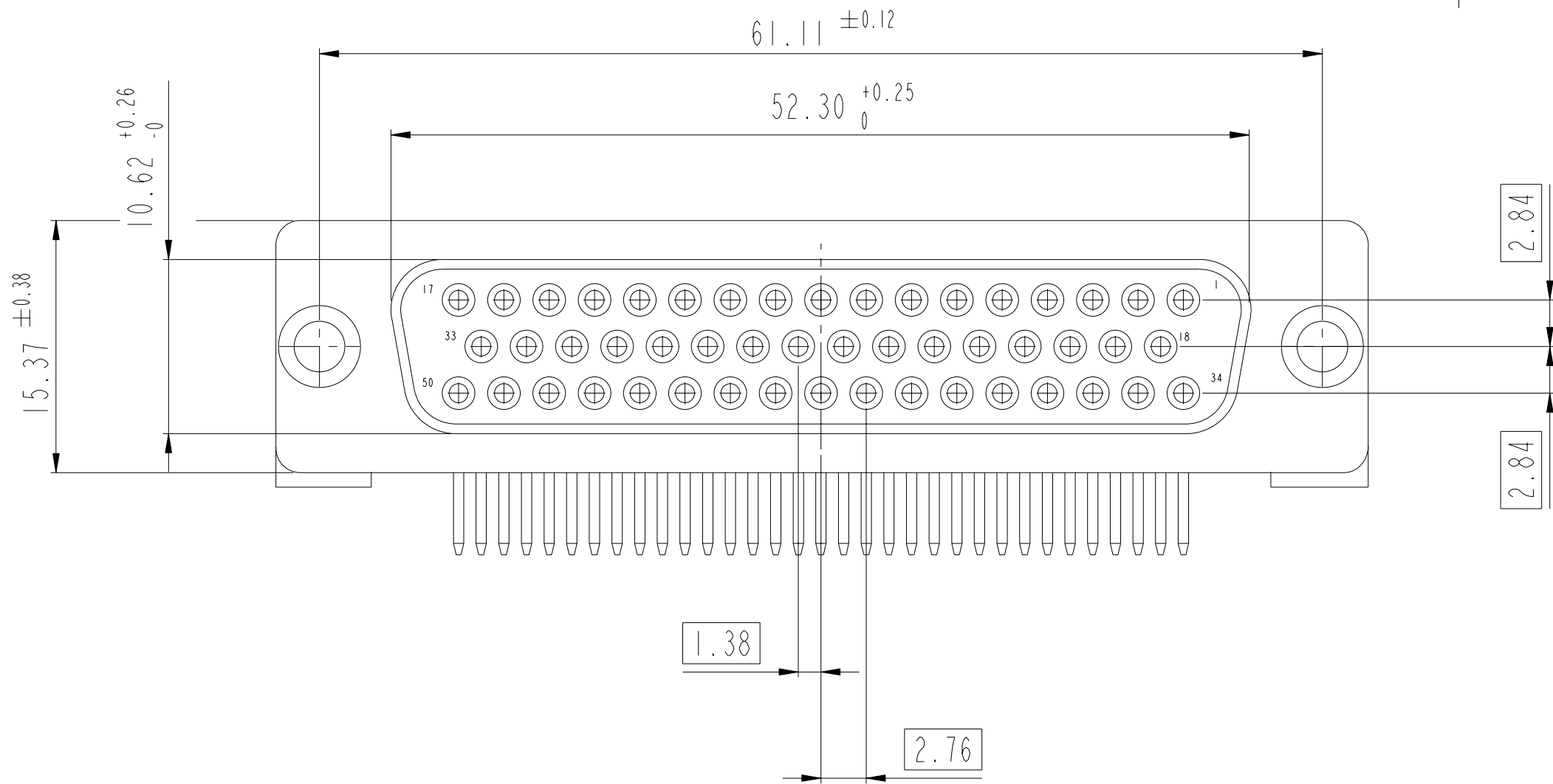
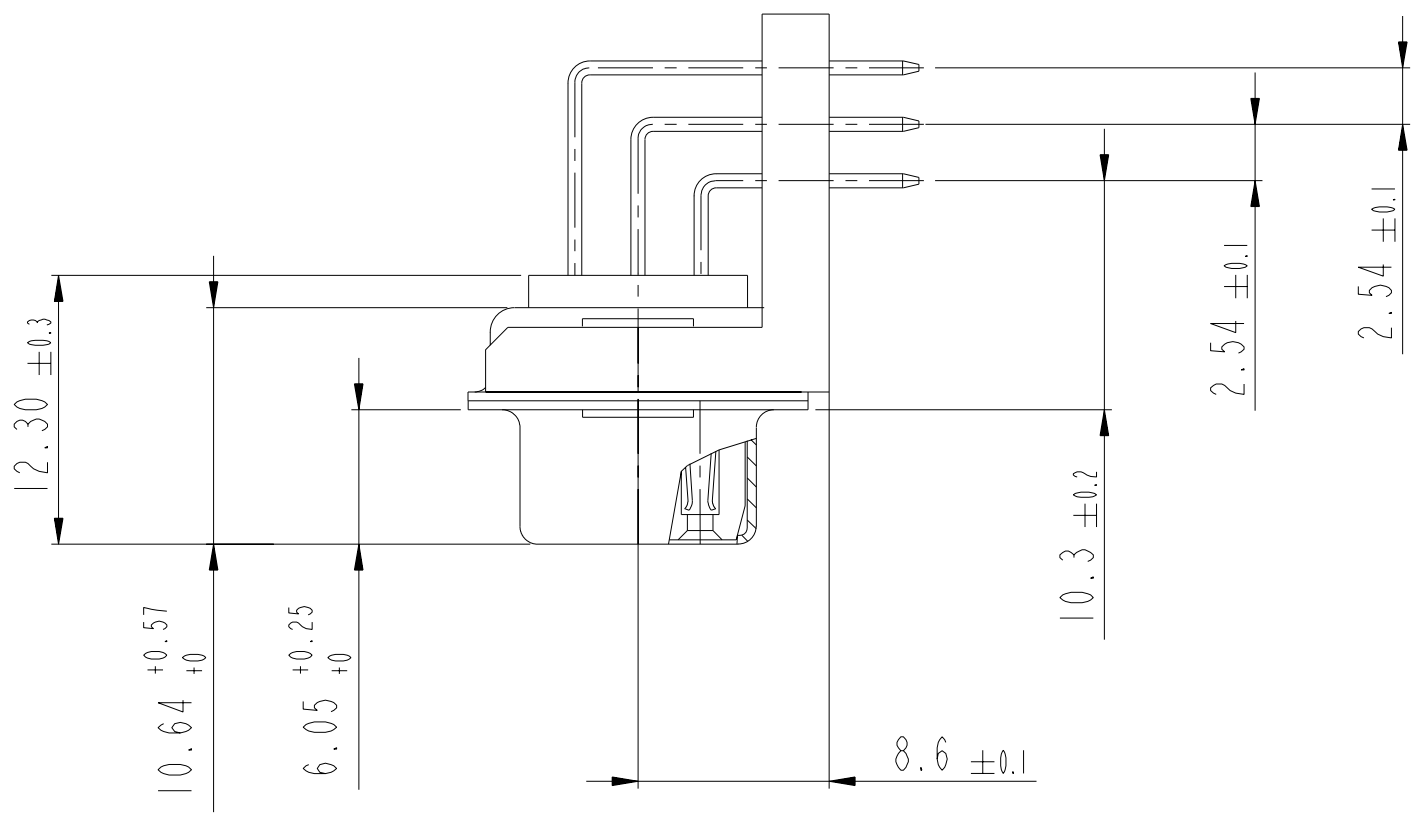
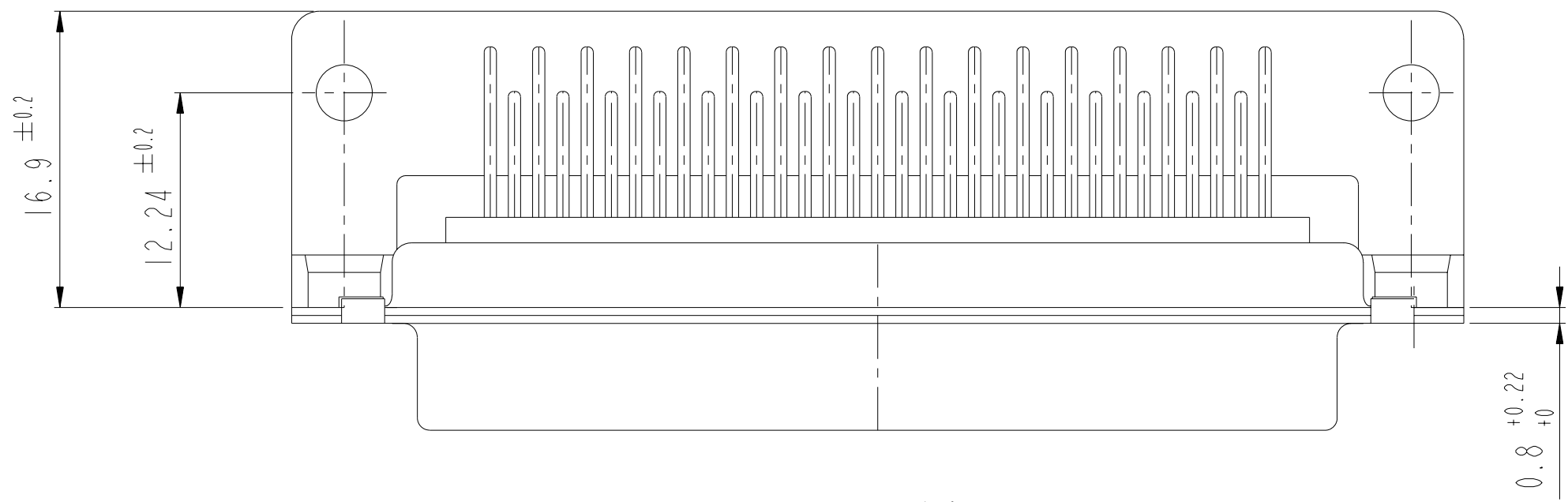
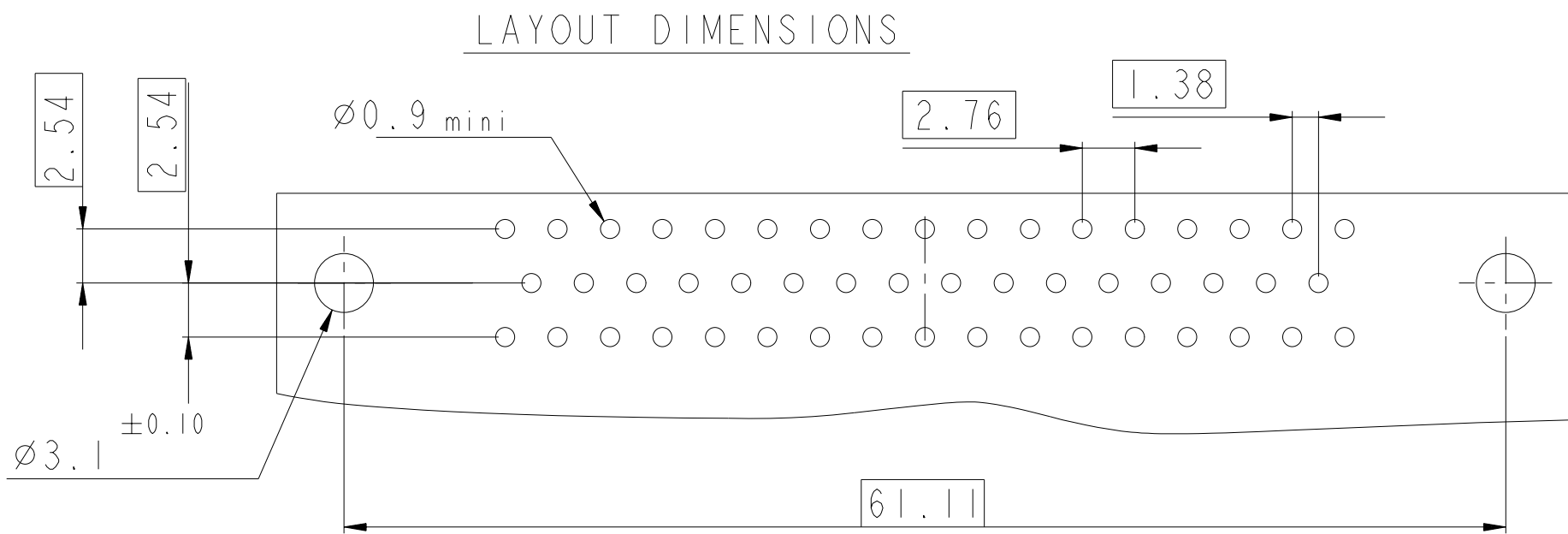
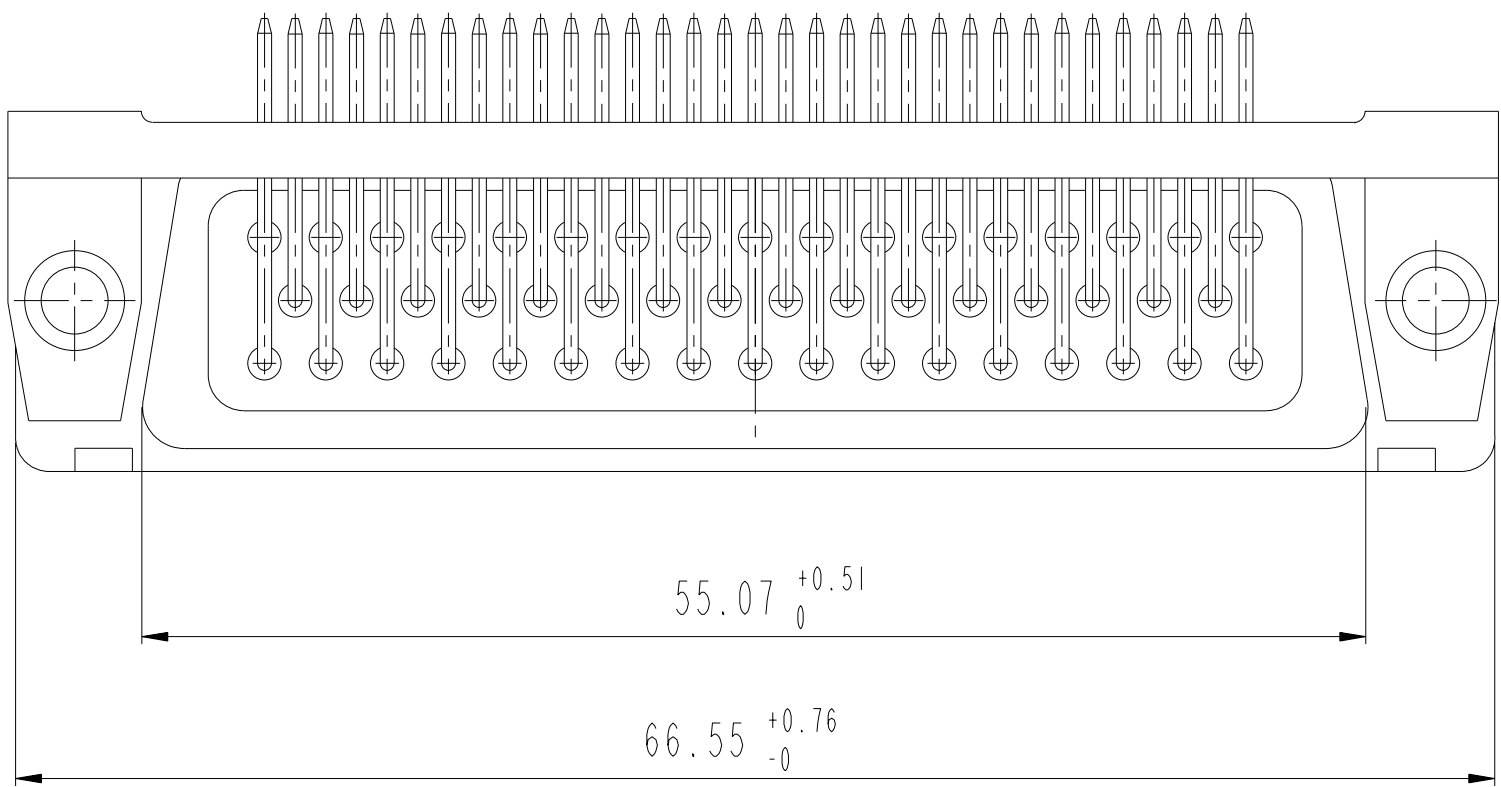


SCALE: 3

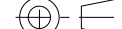


www.fciconnect.com			surface	-	tolerance std	projection	mm	
			ISO 1302	✓	ISO 406 ISO 1101			
			TOLERANCES UNLESS OTHERWISE SPECIFIED					
Dr	M PESSON	2006/11/14	ANGULAR	LINEAR	0.X	±0.3	size	Scale
Eng	P LEGARE	2006/11/14			0.XX	±0.1	A2	2:1
Chr	P LEGARE	2006/11/14	0° ±2°		0.XXX	±0.05	ECN	LS06-0174
Appr	P LEGARE	2006/11/14	Product family			-	Spec ref	
FCi			SUB FEMALE DM HE508 series			dwg no	C01-8637-1748	
			with right angle contact				Rev.	A
			catalog no			-	CUSTOMER	sheet 8 of 9



SHELL SIZE D WITH PLASTIC BRACKET (50 contacts)



SCALE: 3

www.fciconnect.com			surface - <input checked="" type="checkbox"/> ISO 1302		tolerance std ISO 406 ISO 1101		projection 		mm 		
TOLERANCES UNLESS OTHERWISE SPECIFIED											
Dr	M PESSON	2006/11/14	ANGULAR	LINEAR	0.X ±0.3		size A2	Scale 2:1			
Eng	P LEGARE	2006/11/14			0.XX ±0.1						
Chr	P LEGARE	2006/11/14			0.XXX ±0.05						
Appr	P LEGARE	2006/11/14	0° ±2°		ECN LS06-0174						
Product family					-		Spec ref				
			SUB FEMALE DM HE508 series				C01-8637-1748				Rev. A
with right angle contact											
catalog no					-		CUSTOMER			sheet 9 of 9	

# Mouser Electronics

Authorized Distributor

Click to View Pricing, Inventory, Delivery & Lifecycle Information:

[FCI / Amphenol:](#)

[DEM09S500N](#) [DBM25S500CN](#) [DEM09S500CN](#) [DEML09S500N](#) [DAM15S500MN](#) [DBM25S500N](#) [DCM37S500N](#)  
[DDM50S500N](#) [DAML15S500N](#)