

# Actuator

704.029.2

Distribution by  
DigiKey

**DigiKey**



<https://digikey.eao.com/p/704.029.2>

Your product:

---



## 704.029.2 Actuator

### FRONT

Front bezel colour:	Black
Front form:	round
Front dimension:	Ø 29 mm
Front bezel material:	Plastic

### MOUNTING

Design:	raised
---------	--------

### OPERATING-/INDICATION PART

Lens shape:	flush
Lens material:	Plastic
Lens colour:	Red
Lens optics:	transparent
Lens illumination:	illuminative

### ELECTRICAL CHARACTERISTICS

Standards:	The switches comply with the "Standards for low-voltage switching devices" DIN EN 60947-1
------------	---

### MECHANICAL CHARACTERISTIC

Weight:	0.056 kg
Operating force:	8 N
Terminal:	Screw terminal

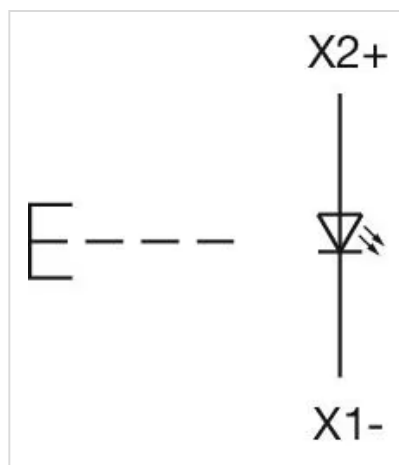
<b>Mechanical lifetime:</b>	≤3 Mio. cycles of operation
<b>Switching action:</b>	Momentary
<b>Operating Travel:</b>	ca. 5.8 mm ± 0.2 mm

## AMBIENT CONDITION

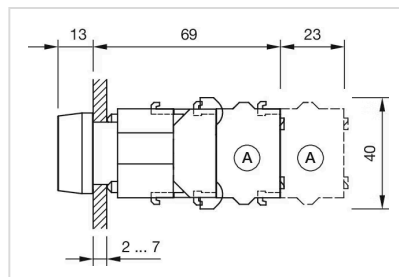
<b>Storage temperature:</b>	– 40 °C ... + 85 °C
<b>IP Protection:</b>	IP65 front side
<b>Operating temperature:</b>	– 40 °C ... + 55 °C

## OTHER

<b>Hints:</b>	Frontring with protective cover to be mounted with a torque of 0.4 Nm onto actuator,Max. 3 switching elements can be clipped on
<b>Short Description:</b>	Actuator, Ø 29 mm, flush, illuminative, Red, Plastic, transparent, round, Black, Plastic, Momentary, Screw terminal
<b>max. number of switching elements:</b>	3
<b>Housing colour:</b>	Grey
<b>Housing material:</b>	Plastic
<b>Wiring diagrams:</b>	

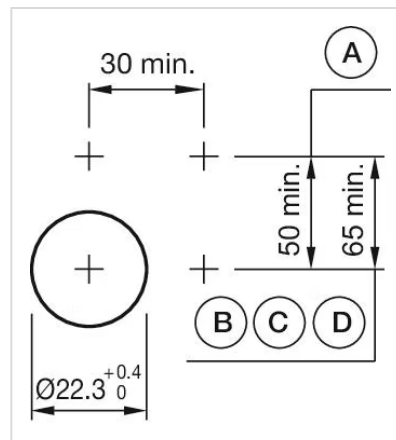


## Dimension drawings:



A = Screw terminal

**Mounting cut-outs:**



A = Screw terminal

B = Push-in terminal (PIT)

C = Plug-in terminal 6.3 mm x 0.8 mm

D = Double plug-in terminal 6.3 mm x 0.8 mm