

Illuminated pushbutton Ø 19 mm silver contact

82-5151.2123



<https://eao.com/p/82-5151.2123>

Your product:



82-5151.2123

Illuminated pushbutton Ø
19 mm silver contact

FRONT

Front bezel material:	Stainless steel
Front form:	round
Front dimension:	Ø 22 mm
Front bezel shape:	flush

MOUNTING

Mounting type:	Panel mounting
Mounting cut-out:	Ø 19 mm

OPERATING-/INDICATION PART

Lens optics:	opaque
Lens illumination:	illuminative
Shape of illumination:	Ring
Lens shape:	flush
Illumination colour:	Blue
Lens colour:	Silver
Lens material:	Stainless steel

ELECTRICAL CHARACTERISTICS

Switching voltage and switching
current:

according to IEC 60947-5-1 (Silver contacts)	
Service categorie AC-15	
Voltage	Current
24 VAC	1 A
35 VAC	1 A (M12 version)
110 VAC	1 A
220 VAC	0.5 A
Switch rating DC service categorie DC-13 (Silver contacts)	
Voltage	Current
24 VDC	0.7 A
35 VDC	0.5 A (M12 version)
110 VDC	0.2 A
220 VDC	0.1 A

according to UL 508 (Silver contacts)	
cosφ 0,75 ... 0,8	
Voltage	Current
120 VAC	5 A
240 VAC	3 A
24 VAC	1 A

Rated Operational Voltage Ue:	250 VAC
Contacts:	1 C
Operation current:	7 mA
Electrical lifetime:	50 000 cycles of operation
Electric strength:	1500 VAC, 50 Hz 1 minute between life terminals and ground
Pollution degree:	2, according to EN IEC 60947-1
Thermal current Ith:	5 A
Operating voltage:	12 V AC/DC
Rated insulation voltage Ui:	250 V

MECHANICAL CHARATERISTIC

Switching action:	Maintained
Terminal:	Soldering terminal, 2.8 x 0.5 mm
Tightening torque:	0.5 ... 0.6 Nm
Mechanical lifetime:	500 000 cycles of operation
Switching system:	Snap-action switching element
Contact material:	Silver
Operating force:	4 N ... 7 N
Operating Travel:	ca. 3 mm
Weight:	0.018 kg

AMBIENT CONDITION

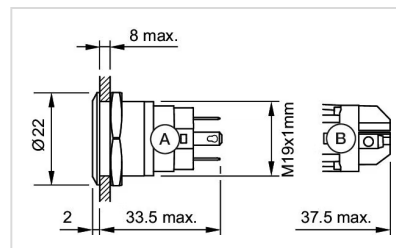
Vibration resistance:	10 ... 500 Hz, amplitude 1.5 mm p-p according to IEC 60068-2-6
Shock resistance:	Max. 500 m / s ² as per IEC 60068-2-27
IP front protection:	IP65, IP67
Storage temperature:	– 40 °C ... + 80 °C
Operating temperature:	– 30 °C ... + 70 °C
Climate resistance:	Damp heat, 21 days according to IEC 60512-11

CERTIFICATE

Conformities:	CE, 2011 / 65 / EC (RoHS), 2014 / 35 / EU (LVD)
Approbations:	CB, CCC, C UL, UL

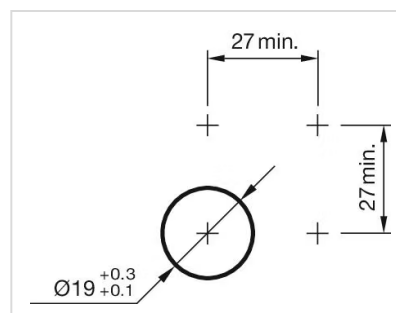
OTHER

Kind of illumination:	Single-LED
Short Description:	Illuminated pushbutton Ø 19 mm silver contact, Maintained, 12 V AC/DC, 1 C, Soldering terminal, 2.8 x 0.5 mm, round, Stainless steel, Blue, Silver
Dimension drawings:	



A = Solder terminal
B = Screw terminal

Mounting cut-outs:



Component layouts:



Wiring diagrams:

