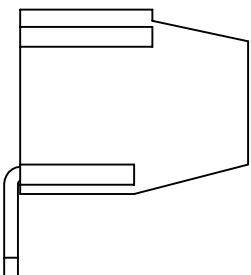
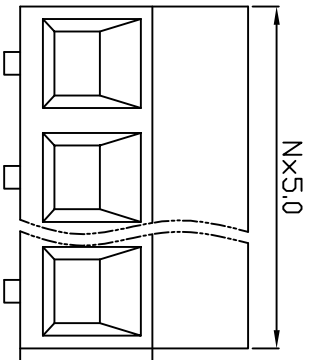
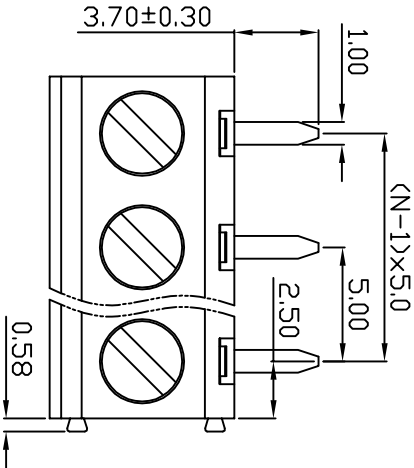
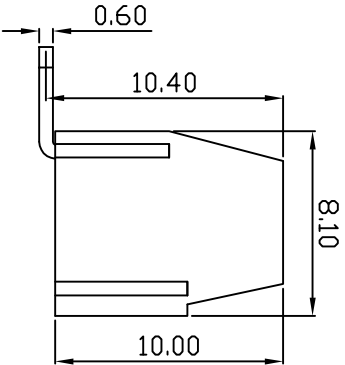
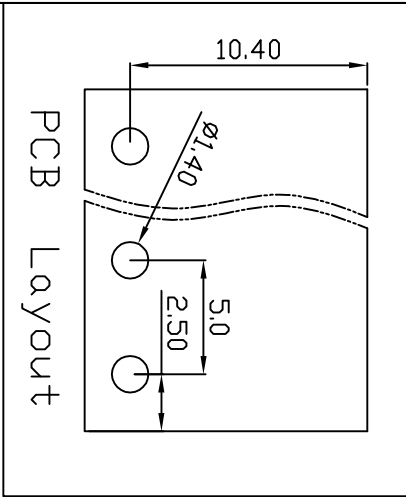


linear dimension(Tolerances Standard GB/T 14486-2008)						—	
variable range	to	over	to	over	to	over	over
6	to	6	to	10	to	100	over 100
tolerance	±0.20	±0.30	±0.50	±0.70	±1.00	±1.30	±1.60
						0.10	0.30
							0.60



UL/CUL 技术参数				ePULS			
UL/CUL Technical Data							
等级	Use Group	B	C	D			
额定电压	Rated Voltage	V	300	-	300		
额定电流	Rated Current	A	12	-	10		

接线范围	Wire Range	26-14					
单/多芯线	Solid/Stranded	[AWG]					

耐电压	Withstanding Voltage	1600V/Min					
-----	----------------------	-----------	--	--	--	--	--

IEC 技术参数				DE			
IEC Technical Data							

过电压类别	Overvoltage Category	III	III	II			
污染等级	Contamination Class	3	2	2			
额定电压	Rated Voltage	V	250	400	630		
额定电流	Rated Current	A	15	15	15		
额定冲击电压	Impulse withstand voltage	kV	4	4	4		

导线截面积	Conductor cross section	1.5					
硬质/柔性导线	Solid/flexible	[mm <sup>2</sup> ]					

材 料		Material	
绝缘材料	Insulation Material	PA66	
阻燃等级	Inflammability	UL94V-0	
导体材料	Conductor Material	铜合金 Copper alloy	
导体表面处理	Conductive Coating	镀锡 Sn Plated	

一般参数		Other Data	
间距 Pitch	[mm]	5.0	
极数 Poles	[P]	02~24	
剥线长度 Stripping Length	[mm]	6-7	
螺丝 Screw 扭矩 Torque(Max)	[N.m]	M3.0.5	
工作温度 Operating temperatur	[°C]	-40~+105	
引脚尺寸 Pin Dimensions	[mm]	0.60x1.00	
PCB板孔径 PCB Hole Diameter	[mm]	1.40	

DB127R — 5.0 — XXP — C — S/P

(Series No.) (Pitch) (Poles)

Slotted/Phillips

(Color):GN:(Green), BK:(Black), BU:(Blue), RD:(Red), GR:(Gray)  
OG:(Orange), WT:(White), YL:(Yellow), CR:(Clear)

APPD: Jting Chen 2022.11.11				NAME: DB127R-5.0-XXP-C-S			
CHKD: Duck Mao 2022.11.11							
DRFT: Steven Lu 2022.11.11							
TYPE: CUSTOMER_DRAWING		SCALE: 1:1		SHEET		1/1	

宁波地博电气有限公司  
Ningbo Dorabo Electric CO., Ltd