

A 95 -40 - Ferrule



3241242

<https://www.phoenixcontact.com/us/products/3241242>

Please be informed that the data shown in this PDF document is generated from our online catalog. Please find the complete data in the user documentation. Our general terms of use for downloads are valid.



Ferrule, Length contact range: 40 mm, sleeve length: 40 mm, color: silver

Your advantages

- The insulation reliability of close connections is increased and the splicing of wires is prevented

Commercial data

| | |
|--------------------------------------|---------------------|
| Item number | 3241242 |
| Packing unit | 100 pc |
| Minimum order quantity | 100 pc |
| Sales key | BH34 |
| Product key | BH3412 |
| Catalog page | Page 480 (C-3-2019) |
| GTIN | 4046356908153 |
| Weight per piece (including packing) | 6.88 g |
| Weight per piece (excluding packing) | 6.35 g |
| Customs tariff number | 85369010 |
| Country of origin | DE |

A 95 -40 - Ferrule

3241242

<https://www.phoenixcontact.com/us/products/3241242>



Technical data

Notes

| | |
|---------|---|
| General | These ferrules are not included in DIN 46228-1: 1992-08 |
|---------|---|

Product properties

| | |
|--------------|------------------|
| Product type | Cable end sleeve |
|--------------|------------------|

Data management status

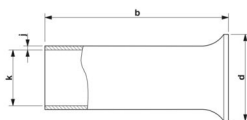
| | |
|------------------|----|
| Article revision | 01 |
|------------------|----|

Connection data

Conductor connection

| | |
|---------------------------------------|--------------------|
| Conductor cross section flexible max. | 95 mm ² |
| Conductor cross section AWG max. | 3/0 |
| Stripping length | 40 mm |

Dimensions

| | |
|---|--|
| Dimensional drawing |  |
| Sleeve length | 40 mm |
| Length contact range | 40 mm |
| Maximum stripping length | 40 mm |
| Ferrule diameter | 14.5 mm |
| Sleeve wall thickness | 0.4 mm |
| Inner dimensions of the insulating collar | 17 mm |

Material specifications

| | |
|-------------------------|-----------------------|
| Color | silver-colored |
| Material | CU-DHP |
| Coating | tin-plated (galvanic) |
| Surface characteristics | Tin-plated |

Mechanical properties

Technical data

| | |
|---------------|-------|
| Sleeve length | 40 mm |
|---------------|-------|

Environmental and real-life conditions

Ambient conditions

| | |
|-----------------------|--------|
| Permanent temperature | 105 °C |
|-----------------------|--------|

A 95 -40 - Ferrule



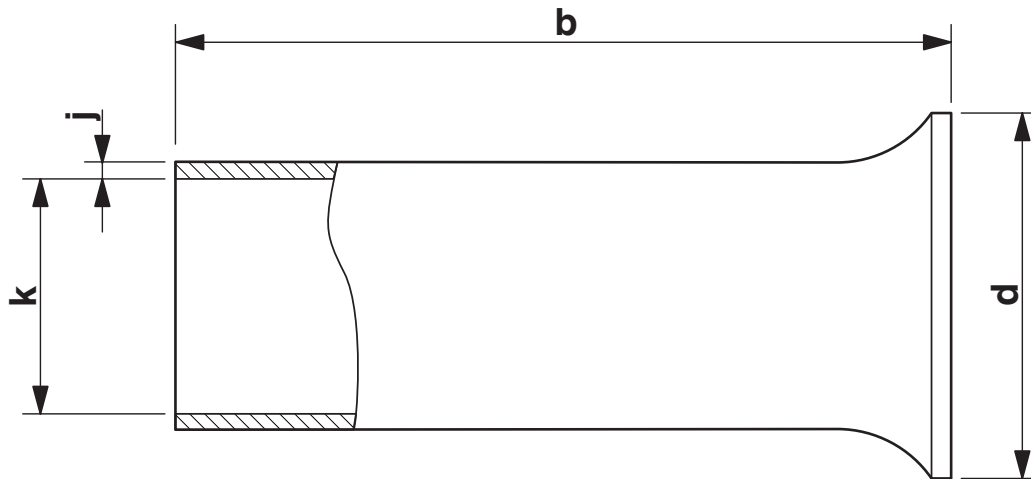
3241242

<https://www.phoenixcontact.com/us/products/3241242>

| | |
|------------------------|--------|
| Short-term temperature | 120 °C |
|------------------------|--------|

Drawings

Dimensional drawing



Sleeve length (b), insulating collar inner dimension (d), sleeve diameter (k), sleeve wall thickness (j)

A 95 -40 - Ferrule



3241242

<https://www.phoenixcontact.com/us/products/3241242>

Classifications

ECLASS

| | |
|-------------|----------|
| ECLASS-11.0 | 27400201 |
| ECLASS-12.0 | 27400201 |
| ECLASS-13.0 | 27400201 |

ETIM

| | |
|----------|----------|
| ETIM 9.0 | EC000005 |
|----------|----------|

UNSPSC

| | |
|-------------|----------|
| UNSPSC 21.0 | 27121700 |
|-------------|----------|

A 95 -40 - Ferrule



3241242

<https://www.phoenixcontact.com/us/products/3241242>

Environmental product compliance

| | |
|---|--|
| EU RoHS | |
| Fulfills EU RoHS substance requirements | Yes, No exemptions |
| China RoHS | |
| Environment friendly use period (EFUP) | EFUP-E |
| | No hazardous substances above the limits |
| EU REACH SVHC | |
| REACH candidate substance (CAS No.) | No substance above 0.1 wt% |

Phoenix Contact 2024 © - all rights reserved
<https://www.phoenixcontact.com>

Phoenix Contact USA
586 Fulling Mill Road
Middletown, PA 17057, United States
(+717) 944-1300
info@phoenixcon.com