

HC-B 24-SML-84/O2M40 - Housing

1645778

<https://www.phoenixcontact.com/us/products/1645778>



Please be informed that the data shown in this PDF document is generated from our online catalog. Please find the complete data in the user documentation. Our general terms of use for downloads are valid.



HEAVYCON box mounting base B24, with single locking latch, height 84 mm, with support 1x M40

Commercial data

| | |
|--------------------------------------|---------------------|
| Item number | 1645778 |
| Packing unit | 10 pc |
| Minimum order quantity | 1 pc |
| Product key | BF7AAC |
| Catalog page | Page 530 (C-4-2013) |
| GTIN | 4017918961824 |
| Weight per piece (including packing) | 445.36 g |
| Weight per piece (excluding packing) | 445.36 g |
| Country of origin | DE |

HC-B 24-SML-84/O2M40 - Housing

1645778

<https://www.phoenixcontact.com/us/products/1645778>



Technical data

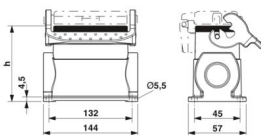
Notes

| | |
|---------|---|
| General | For contact inserts HC-B24, BB46, D64, DD108, M |
|---------|---|

Product properties

| | |
|------------------------------|----------------------------|
| Product type | Housing with locking latch |
| Housing type | Box mounting bases |
| Application | Standard |
| Type | B24 |
| No. of cable outlets | 2 |
| Type of the screw connection | 2x M40 |
| Shielded | no |
| Cable outlet | lateral |
| Pg screw connection | none |

Dimensions

| | |
|---------------------|--|
| Dimensional drawing |  |
| Width | 57 mm |
| Height | 84 mm |
| Length | 144 mm |

Material specifications

| | |
|--------------------------|-----------------------------|
| Seal material | NBR |
| Housing material | die-cast aluminum |
| Housing surface material | Powder-coated, gray |
| Locking latch material | Stainless steel, handle: PA |

Mechanical properties

Mechanical data

| | |
|------------------------------|--------|
| Type of the screw connection | 2x M40 |
| Locking type | Latch |

Environmental and real-life conditions

Ambient conditions

| | |
|---------------------------------|-------------------|
| Degree of protection | IP65 |
| Ambient temperature (operation) | -40 °C ... 125 °C |

HC-B 24-SML-84/O2M40 - Housing

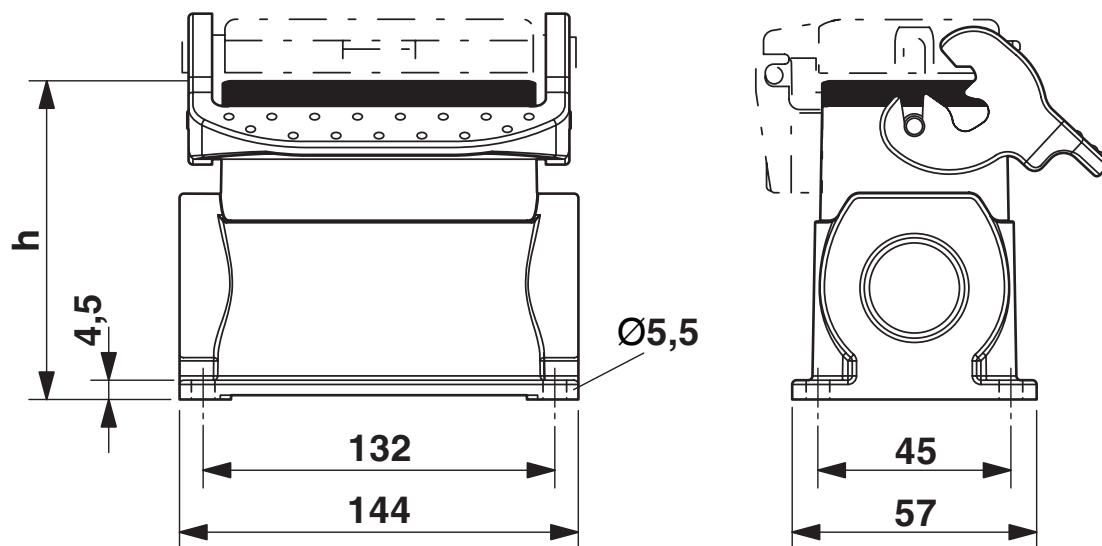
1645778

<https://www.phoenixcontact.com/us/products/1645778>



Drawings

Dimensional drawing



Dimensional drawing

HC-B 24-SML-84/O2M40 - Housing



1645778

<https://www.phoenixcontact.com/us/products/1645778>

Classifications

ECLASS

| | |
|-------------|----------|
| ECLASS-11.0 | 27440202 |
| ECLASS-13.0 | 27440202 |

UNSPSC

| | |
|-------------|----------|
| UNSPSC 21.0 | 31261501 |
|-------------|----------|

HC-B 24-SML-84/O2M40 - Housing

1645778

<https://www.phoenixcontact.com/us/products/1645778>



Environmental product compliance

| | |
|---|--|
| EU RoHS | |
| Fulfills EU RoHS substance requirements | Yes, No exemptions |
| China RoHS | |
| Environment friendly use period (EFUP) | EFUP-E |
| | No hazardous substances above the limits |
| EU REACH SVHC | |
| REACH candidate substance (CAS No.) | No substance above 0.1 wt% |

HC-B 24-SML-84/O2M40 - Housing

1645778

<https://www.phoenixcontact.com/us/products/1645778>



Accessories

G-INS-M40-M68N-PNES-GY - Cable gland

1411128

<https://www.phoenixcontact.com/us/products/1411128>



Cable gland, material for screw connection: PA, application: Standard, external cable diameter 19 mm ... 28 mm, shielding: no, connecting thread: M40 x 1.5, color: silver-grey RAL 7001

G-INS-M40-M68N-PNES-BK - Cable gland

1411137

<https://www.phoenixcontact.com/us/products/1411137>



Cable gland, material for screw connection: PA, application: Standard, external cable diameter 19 mm ... 28 mm, shielding: no, connecting thread: M40 x 1.5, color: jet black RAL 9005

HC-B 24-SML-84/O2M40 - Housing

1645778

<https://www.phoenixcontact.com/us/products/1645778>



G-INS-M40-M68N-NNES-S - Cable gland

1411167

<https://www.phoenixcontact.com/us/products/1411167>



Cable gland, material for screw connection: Brass, nickel-plated, application: Standard, external cable diameter 19 mm ... 28 mm, shielding: no, connecting thread: M40 x 1.5, color: silver, with O-ring

HC-M-KV-M40(27-34) - Cable gland

1607729

<https://www.phoenixcontact.com/us/products/1607729>



Metal screw connection up to 5 bar, thread length: 8 mm, cable diameter: 27 ... 34 mm, WAF 50, screw connection: M40

HC-B 24-SML-84/O2M40 - Housing

1645778

<https://www.phoenixcontact.com/us/products/1645778>



G-INSEC-M40-M68N-NCRS-S - Cable gland

1411192

<https://www.phoenixcontact.com/us/products/1411192>



Cable gland, material for screw connection: Brass, nickel-plated, application: EMC, external cable diameter 19 mm ... 27 mm, shielding: yes, connecting thread: M40 x 1.5, color: silver, with O-ring

HC-M-KV-Z-M40 - Cable gland

1646175

<https://www.phoenixcontact.com/us/products/1646175>



Metal screw connection with strain relief clamp, thread length: 8 mm, cable sealing area: 24 - 33 mm, clamping area: 26 - 36 mm, SW 50, screw connection: M40

HC-B 24-SML-84/O2M40 - Housing

1645778

<https://www.phoenixcontact.com/us/products/1645778>



REDUC-M-KV-M40/M32 - Reducing adapter

1647640

<https://www.phoenixcontact.com/us/products/1647640>

Reducing adapter, connecting thread: M40 x 1.5, color: silver, with O-ring



HC-M-BS-M40 - Screw plug

1645875

<https://www.phoenixcontact.com/us/products/1645875>

Screw plug, material for screw connection: Brass, nickel-plated, connecting thread: M40 x 1.5, color: silver



Phoenix Contact 2024 © - all rights reserved
<https://www.phoenixcontact.com>

Phoenix Contact USA
586 Fulling Mill Road
Middletown, PA 17057, United States
(+717) 944-1300
info@phoenixcon.com