

**Product number FP11056_LISA2-RS-PIN**

Family	Lisa	FWHM	24 degrees
Type	Assembly	Efficiency	91 %
LED	LUXEON Rebel ES	cd/Im	3.600
Color	Black	Gerber File	Available
Diameter	9.9 mm		
Height	6.6 mm		
Style	Round		
Optic Material	PMMA		
Holder Material	-		
Fastening	["glue", "pin"]		
Status	Production ready		

**Product number FP11086_LISA2-RS-CLIP**

Family	Lisa	FWHM	24 degrees
Type	Assembly	Efficiency	92 %
LED	LUXEON Rebel ES	cd/Im	-
Color	Black	Gerber File	Available
Diameter	9.9 mm		
Height	6.6 mm		
Style	Round		
Optic Material	PMMA		
Holder Material	-		
Fastening	["glue", "clips"]		
Status	Production ready		

**Product number FP10992_LISA2-M-PIN**

Family	Lisa	FWHM	35 degrees
Type	Assembly	Efficiency	93 %
LED	LUXEON Rebel ES	cd/Im	2.300
Color	Black	Gerber File	Available
Diameter	9.9 mm		
Height	6.6 mm		
Style	Round		
Optic Material	PMMA		
Holder Material	-		
Fastening	["glue", "pin"]		
Status	Production ready		

**Product number FP11072_LISA2-M-CLIP**

Family	Lisa	FWHM	35 degrees
Type	Assembly	Efficiency	93 %
LED	LUXEON Rebel ES	cd/Im	-
Color	Black	Gerber File	Available
Diameter	9.9 mm		
Height	6.6 mm		
Style	Round		
Optic Material	PMMA		
Holder Material	-		
Fastening	["glue", "clips"]		
Status	Production ready		

**Product number** FP11122_LISA2-O-CLIP

Family	Lisa	FWHM	44+23 degrees
Type	Assembly	Efficiency	81 %
LED	LUXEON Rebel ES	cd/Im	-
Color	Black	Gerber File	Available
Diameter	9.9 mm		
Height	6.6 mm		
Style	Round		
Optic Material	PMMA		
Holder Material	-		
Fastening	["glue", "clips"]		
Status	Production ready		

**Product number** FP11126_LISA2-O-PIN

Family	Lisa	FWHM	44+23 degrees
Type	Assembly	Efficiency	81 %
LED	LUXEON Rebel ES	cd/Im	2.000
Color	Black	Gerber File	Available
Diameter	9.9 mm		
Height	6.6 mm		
Style	Round		
Optic Material	PMMA		
Holder Material	-		
Fastening	["glue", "pin"]		
Status	Production ready		

**Product number** FP10996_LISA2-W-PIN

Family	Lisa	FWHM	46 degrees
Type	Assembly	Efficiency	93 %
LED	LUXEON Rebel ES	cd/Im	-
Color	Black	Gerber File	Available
Diameter	9.9 mm		
Height	6.8 mm		
Style	Round		
Optic Material	PMMA		
Holder Material	-		
Fastening	["glue", "pin"]		
Status	Production ready		

**Product number** FP11076_LISA2-W-CLIP

Family	Lisa	FWHM	46 degrees
Type	Assembly	Efficiency	93 %
LED	LUXEON Rebel ES	cd/Im	-
Color	Black	Gerber File	Available
Diameter	9.9 mm		
Height	6.8 mm		
Style	Round		
Optic Material	PMMA		
Holder Material	-		
Fastening	["glue", "clips"]		
Status	Production ready		

**Product number FP11853_LISA2-O-90-PIN**

Family	Lisa	FWHM	48+20 degrees
Type	Assembly	Efficiency	81 %
LED	LUXEON Rebel ES	cd/Im	1.900
Color	Black	Gerber File	Available
Diameter	9.9 mm		
Height	6.6 mm		
Style	Round		
Optic Material	PMMA		
Holder Material	-		
Fastening	["glue", "pin"]		
Status	Production ready		

Product number FP11858_LISA2-O-90-CLIP

Family	Lisa	FWHM	48+20 degrees
Type	Assembly	Efficiency	81 %
LED	LUXEON Rebel ES	cd/Im	-
Color	Black	Gerber File	Available
Diameter	9.9 mm		
Height	6.6 mm		
Style	Round		
Optic Material	PMMA		
Holder Material	-		
Fastening	["glue", "clips"]		
Status	Production ready		

Product number FP10997_LISA2-WW-PIN

Family	Lisa	FWHM	56 degrees
Type	Assembly	Efficiency	93 %
LED	LUXEON Rebel ES	cd/Im	-
Color	Black	Gerber File	Available
Diameter	9.9 mm		
Height	7 mm		
Style	Round		
Optic Material	PMMA		
Holder Material	-		
Fastening	["glue", "pin"]		
Status	Production ready		

Product number FP11431_LISA2-WWW-CLIP

Family	Lisa	FWHM	74 degrees
Type	Assembly	Efficiency	73 %
LED	LUXEON Rebel ES	cd/Im	0.500
Color	Black	Gerber File	Available
Diameter	9.9 mm		
Height	7 mm		
Style	Round		
Optic Material	PMMA		
Holder Material	-		
Fastening	["glue", "clips"]		
Status	Production ready		

**Product number C12469_LISA2-R-PIN**

Family	Lisa	FWHM	83 degrees
Type	Reflector	Efficiency	90 %
LED	LUXEON Rebel ES	cd/Im	0.360
Color	White	Gerber File	Available
Diameter	9.9 mm		
Height	6.5 mm		
Style	Round		
Optic Material	HRPC		
Holder Material	-		
Fastening	["glue", "pin"]		
Status	Production ready		

**Product number FP11429_LISA2-WWW-PIN**

Family	Lisa	FWHM	88 degrees
Type	Assembly	Efficiency	-
LED	LUXEON Rebel ES	cd/Im	-
Color	Black	Gerber File	Available
Diameter	9.9 mm		
Height	7 mm		
Style	Round		
Optic Material	PMMA		
Holder Material	-		
Fastening	["glue", "pin"]		
Status	Production ready		

NOTE: The typical divergence will be changed by different color, chip size and chip position tolerance. The typical total divergence is the full angle measured where the luminous intensity is half of the peak value.



PRODUCT DATASHEET

Lisa series

last update 8/3/2018

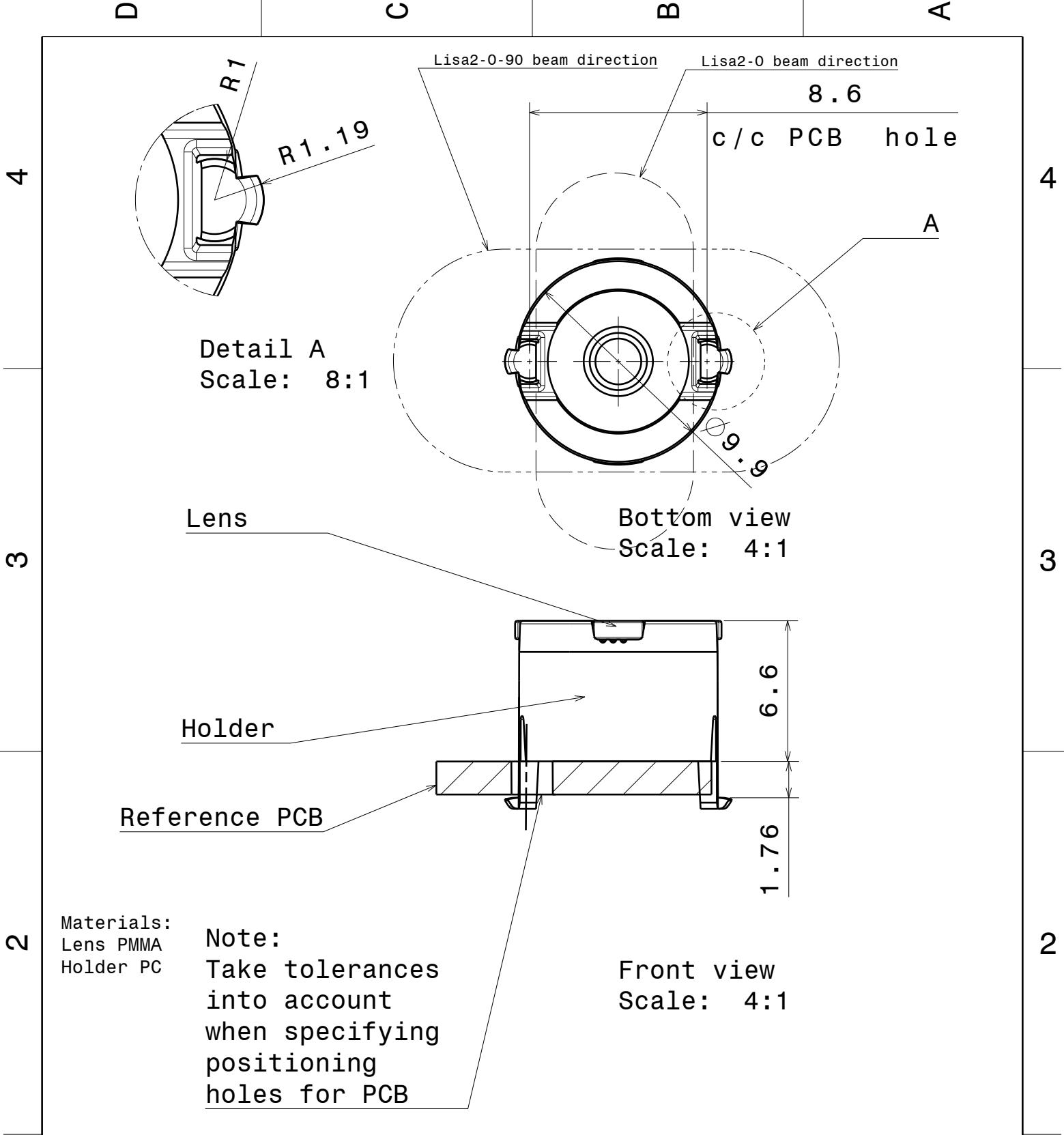
GENERAL INFORMATION

- Product series especially designed & optimized for LUXEON Rebel ES series of LEDs.
- Special care taken to make light distribution as uniform as possible.
- Lens material optical grade PMMA with high UV and temperature resistance. Allows use of high current and temperature conditions.

Please find more information about used material from below:

http://ledil.fi/sites/default/files/Documents/Technical/Material/PMMA%20N%20UL94_Yellow%20Card.pdf

<http://ledil.fi/sites/default/files/Documents/Technical/Material/PMMA%20N%20PLEXIGLAS-Datasheet.pdf>



This drawing is our property. It can't be reproduced or communicated without our written agreement.



Ledil Oy
Tehdaskatu 13
FIN-24100 SALO
Finland

DRAWING TITLE

Datasheet Lisa2-clip16-Rebel series Assy

DRAWN BY

ah

DATE

20.7.2011

CHECKED BY

sn

DATE

20.7.2011

DESIGNED BY

hh

DATE

19.10.2009

SIZE

A4

DRAWING NUMBER

REV

2

SCALE

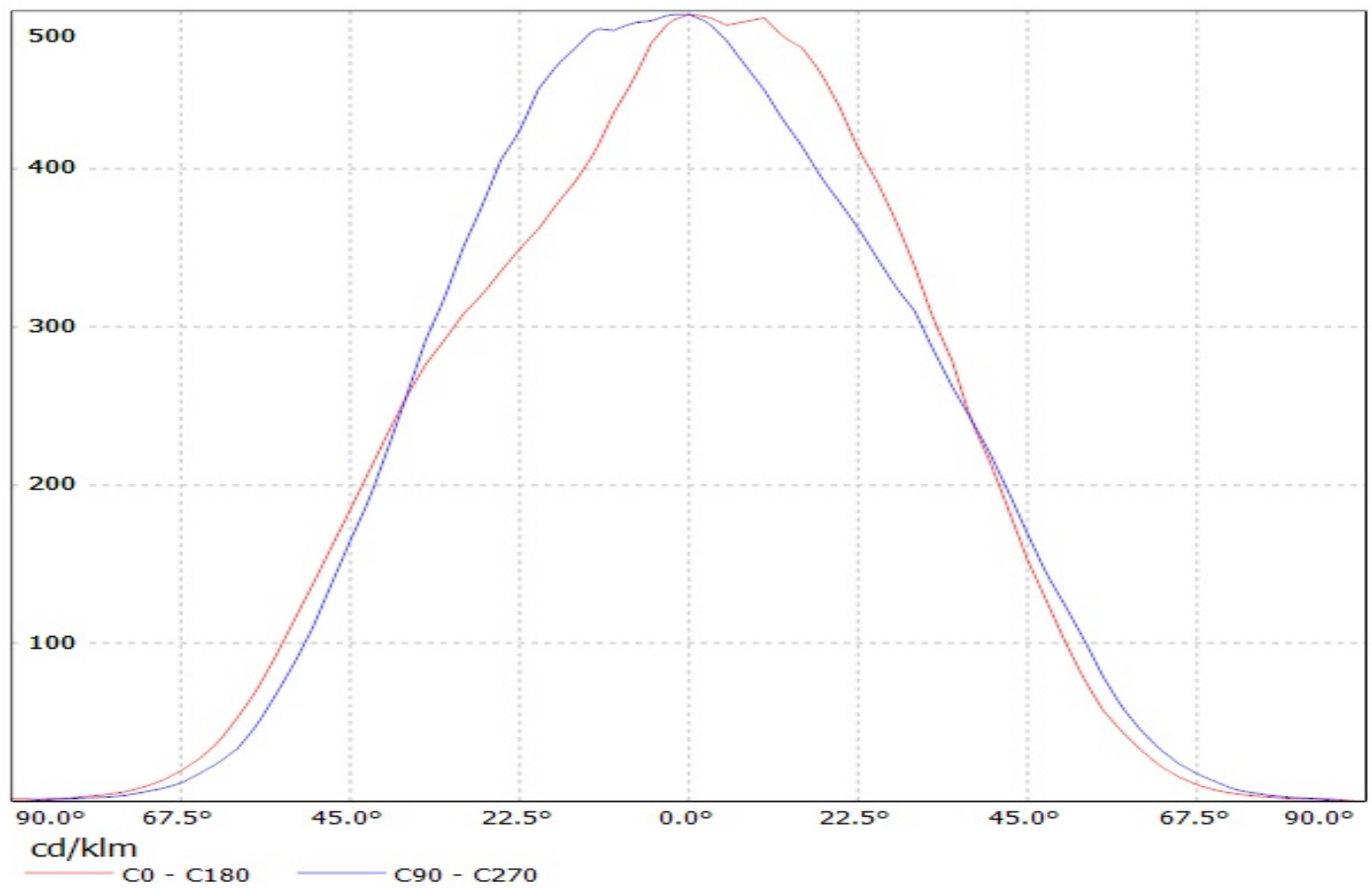
4:1

WEIGHT (g)

SHEET

1/1

Luminaire: Ledil Oy FP11431_LISA2-WWW-CLIP (Luxeon Rebel-ES 90lm @ 250mA) Efficiency=73%
Lamps: 1 x Luxeon Rebel-ES 90lm @ 250mA



Luminaire: Ledil Oy FP11431_LISA2-WWW-CLIP (Luxeon Rebel-ES 90lm @ 250mA) Efficiency=73%
Lamps: 1 x Luxeon Rebel-ES 90lm @ 250mA

