

REFERENCE SPECIFICATIONS

-NFC 93425 (in compliance with HE 507)

PHYSICAL CHARACTERISTICS

-INSULATOR MATERIAL: THERMOPLASTIC .UL94V0

-ACCESSORIES: BRASS

-SHELLS: STEEL

ELECTRICAL CHARACTERISTICS

-CONTACT/CONTACT : >=1000 V

-CONTACT/GROUND : >=1200 V

-INSULATION RESISTANCE: >=5000 MOhms

ENVIRONMENTAL CHARACTERISTICS

- CLIMATIC CATEGORY: 55/125/21

TEMPERATURE RANGE -55°C TO +125°C

DAMP HEAT STEADY STATE 21 DAYS

SALT SPRAY 24 HOURS

MECHANICAL CHARACTERISTICS

- RETENTION AGAINST TORQUE: - Threaded insert: 0.7 N.m minimum

- Female screw : 0.5 N.m minimum

Series

DBLSW5PA00LF

Shell size: E A B C

see sheet 2

Front accessory definition
see sheet 2

Blank : Without accessory

L : Threaded insert M3

O : Threaded insert UNC 4-40

V : Female screw UNC 4-40

Layout of contacts (see sheet 3)

Contacts

P :Pin

PCB accessory definition

A witout accessory on PCB

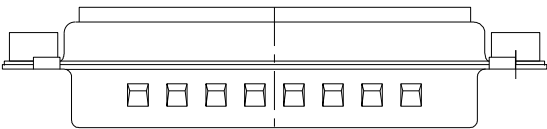
Power contacts

00 without power contact

See note RoHS

NOTE RoHS INFORMATION

- The "LF" products meet european union Directives and other country regulations as described in GS-22-008.
- Shell plating :2 to 4 µm Cu + Ni + 3 to 10 µmm Sn(pure bright)
- Accessories: Sn pure bright + nickel
- Packaging spec: See GS-14-920



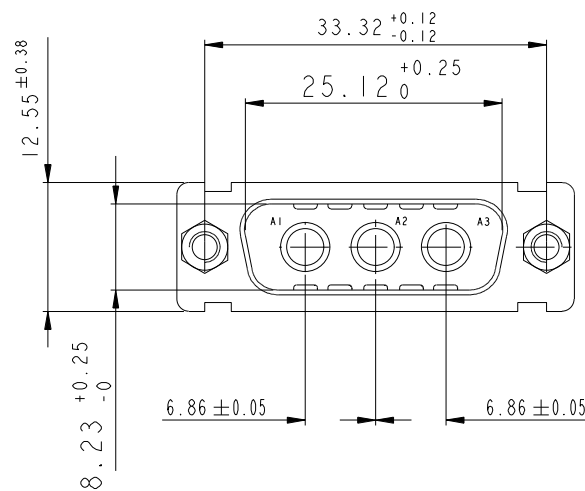
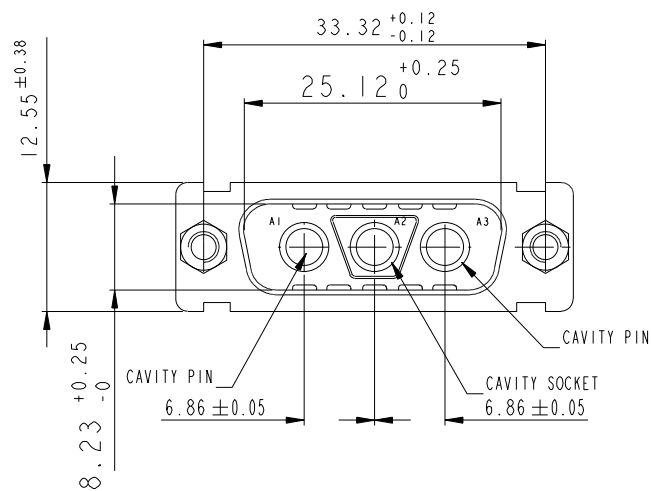
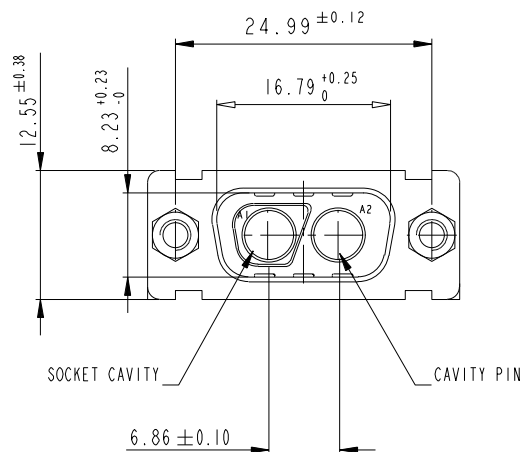
rev	ecn no	dr	date
A	LS05-0113	MPE	2005-11-28
B	LS06-0208	LGO	2006-12-13
C	LS07-0273	MPE	2007-11/05
D	F09-0076	LSA	2009-08-20
E	F10-0017	LSA	2010-03-10
-	-	-	-
-	-	-	-

www.fciconnect.com			surface ISO 1302	-	tolerance std ISO 406	ISO 1101	projection ⊕	mm
Dr	M PESSON	2005-10-11	TOLERANCES UNLESS OTHERWISE SPECIFIED				size	Scale
Eng	P LEGARE	2005-10-11	ANGULAR	LINEAR	0.X	±0.3	A2	2:1
Chr			0°	±2°	0.XX	±0.1	ECN	F09-0076
Appr			0.XXX	±0.05	Product family			
							-	Spec ref
FCI			title				dwg no	Rev.
			SUB MALE DW				C01-8639-2315	E
			full power without contact					
			catalog no				CUSTOMER	sheet 1 of 4

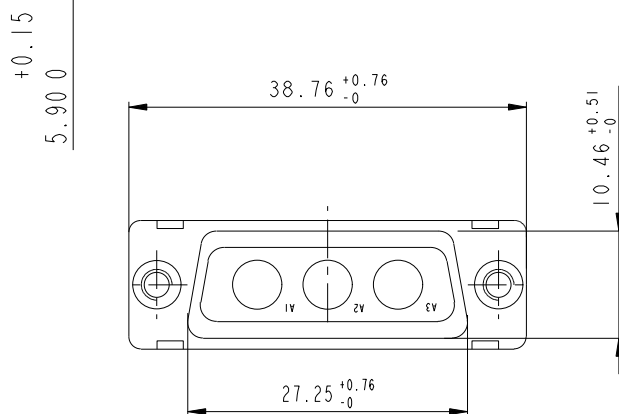
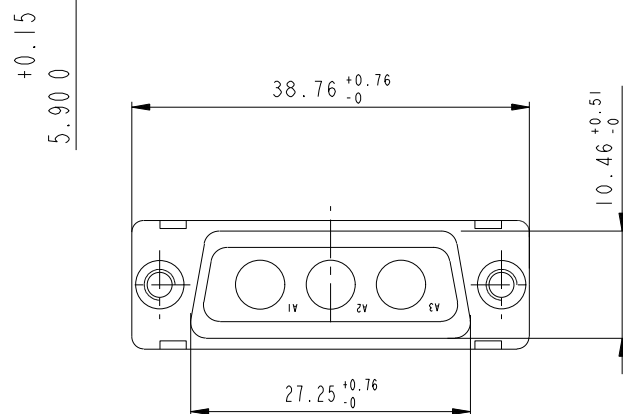
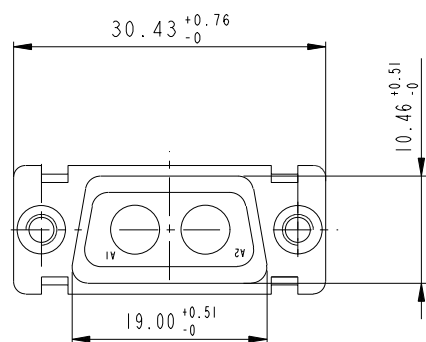
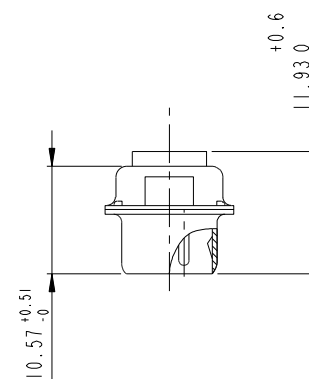
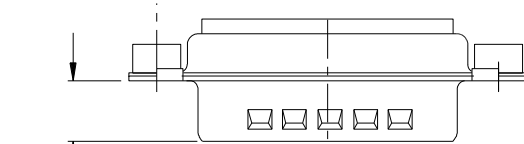
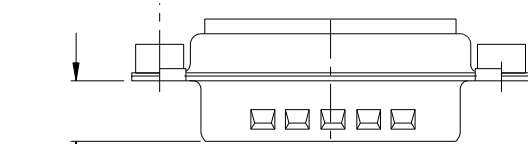
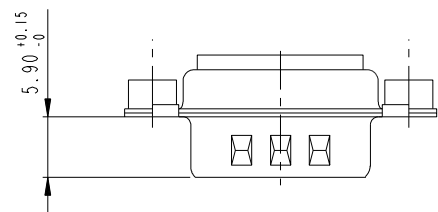
2V2

3V3


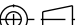


3W3

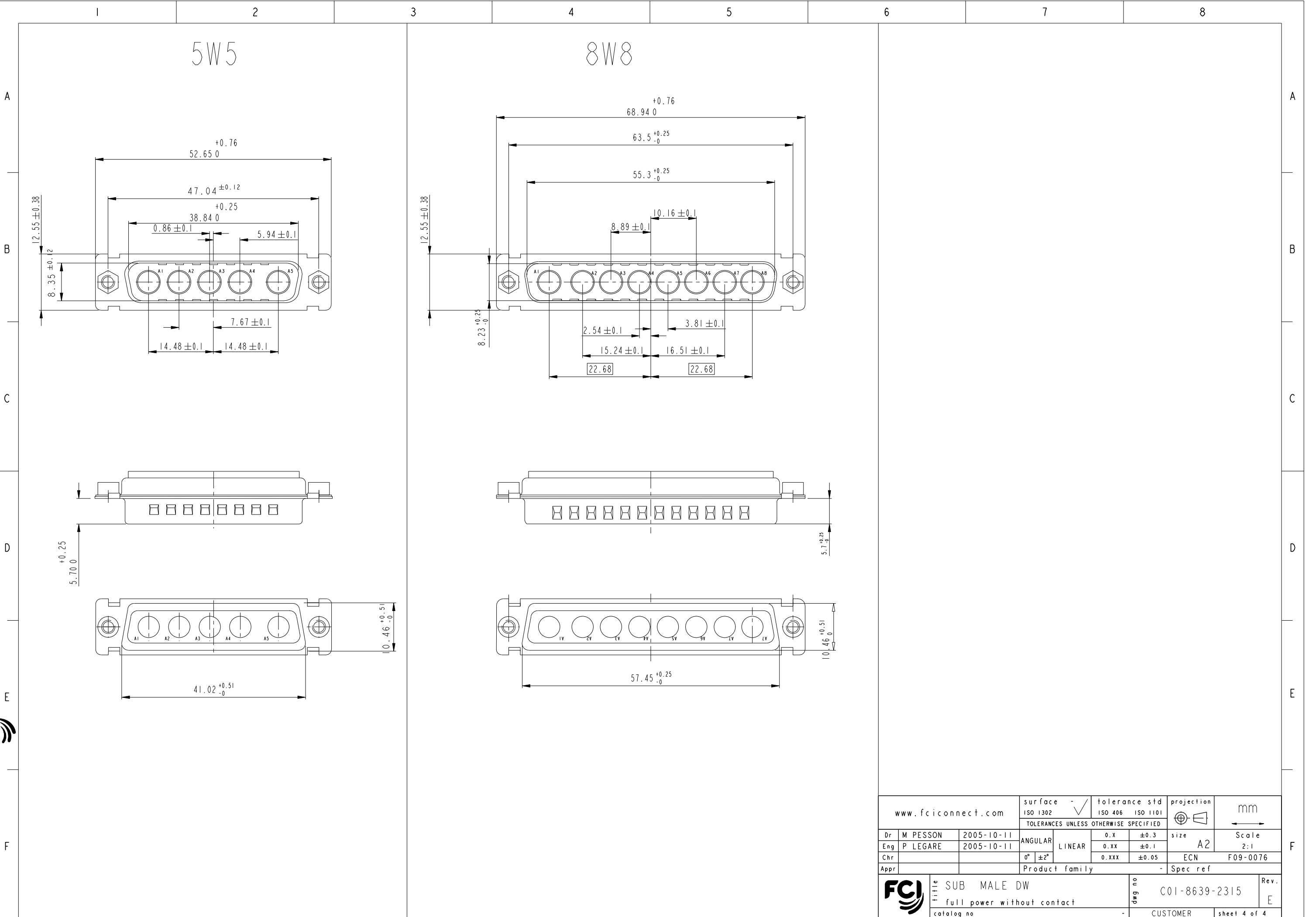


SIDE VIEW FOR
LAYOUTS: E A B C



Copyright FCI.

www.fciconnect.com			surface - 		tolerance std ISO 1302 ISO 406 ISO 1101		projection 		mm 	
			TOLERANCES UNLESS OTHERWISE SPECIFIED							
Dr	M PESSON	2005-10-11	ANGULAR	LINEAR	0.X		±0.3		size	Scale
Eng	P LEGARE	2005-10-11			0.XX		±0.1		A2	
Chr			0° ±2°		0.XXX		±0.05		ECN	F09-0076
Appr			Product family					-	Spec ref	
			title SUB MALE DW				dwg no C01-8639-2315		Rev. E	
			full power without contact							
			catalog no -				CUSTOMER		sheet 3 of 4	



Mouser Electronics

Authorized Distributor

Click to View Pricing, Inventory, Delivery & Lifecycle Information:

[FCI / Amphenol:](#)

[DAO3W3PA00LF](#)