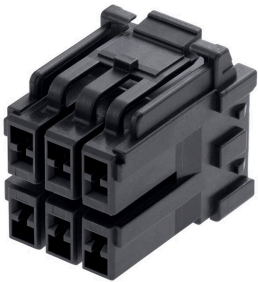




**Part Number :** [2122092061](#)  
**Product Description :** CP-3.3 Receptacle Housing, 3.30mm Pitch, Dual Row, Positive Lock, Glow-Wire Capable, 6 Circuits, Black  
**Series Number :** 212209  
**Status :** Active  
**Product Category :** Connector Housings



Documents & Resources

**Drawings**  
[2122092061\\_sd.pdf](#)

**3D Models and Design Files**  
[2122092061\\_stp.zip](#)

**Specifications**  
[2122099200-SPK-200.pdf](#)  
[2122090000-PS-000.pdf](#)

Product Environment Compliance

Compliance

GADSL/IMDS	Not Relevant
China RoHS	
EU ELV	Not Relevant
Low-Halogen Status	Not Low-Halogen per IEC 61249-2-21
REACH SVHC	Not Contained per D(2024)4144-DC (27 June 2024)
EU RoHS	Compliant per EU 2015/863

- Multiple Part Product Compliance Statements
- Eu RoHS
  - REACH SVHC
  - Low-Halogen

- Multiple Part Industry Compliance Documents
- IPC 1752A Class C
  - IPC 1752A Class D

- Molex Product Compliance Declaration
- IEC-62474
- chemSHERPA (xml)

## EU RoHS Certificate of Compliance

---

### Part Details

#### General

Status	Active
Category	Connector Housings
Series	212209
Description	CP-3.3 Receptacle Housing, 3.30mm Pitch, Dual Row, Positive Lock, Glow-Wire Capable, 6 Circuits, Black
Application	Power, Wire-to-Board
Product Name	CP-3.3
UPC	193264099665

#### Agency

UL	E29179
----	--------

#### Physical

Circuits (maximum)	6
Color - Resin	Black
Flammability	94V-0
Gender	Receptacle
Glow-Wire Capable	Yes
Keying to Mating Part	Yes
Lock to Mating Part	Yes
Material - Resin	Polyamide
Net Weight	1447.580/mg
Number of Rows	2
Packaging Type	Bag
Panel Mount	No
Pitch - Mating Interface	3.30mm
Pitch - Termination Interface	3.30mm

Polarized to Mating Part	Yes
Temperature Range - Operating	-40° to +105°C

---

## Mates With / Use With

### Mates with Part(s)

Description	Part Number
CP-3.3 Vertical Dual Row Headers	<u>212210</u>

### Use with Part(s)

Description	Part Number
CP-3.3 Terminal Position Assurance (TPA) Retainer, 3 Circuit	<u>2122132030</u>
CP-3.3 Wire-to-Board Crimp Terminal, Female, 20-18 AWG, Reel	<u>5056070001</u>
CP-3.3 Wire-to-Board Crimp Terminal, Female, 20-18 AWG, Bag	<u>5056070101</u>
CP-2.5 Mini and CP-3.3 Female Crimp Terminals	<u>50397</u>