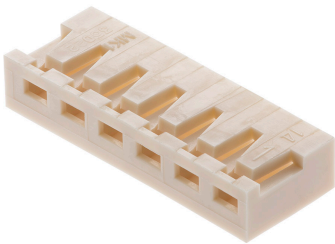




**Part Number :** [2124150200](#)  
**Product Description :** 2.50mm Pitch, Board-In Crimp Housing, 2 Circuits, Right-Angle, Natural  
**Series Number :** 212415  
**Status :** Active  
**Product Category :** Connector Housings



## Documents & Resources

**Drawings**  
[Drawing 2124150200\\_sd.pdf](#)


**3D Models and Design Files**  
[3D Model 2124150200\\_stp.zip](#)

**Specifications**  
[Packaging Specification 2124150000PK-000.pdf](#)  
[Product Specification 2124150000PS-000.pdf](#)

**Tooling Specifications**  
[Crimp Specification 350210000CS-000.pdf](#)

## Product Environment Compliance

### Compliance

GADSL/IMDS	Not Relevant
China RoHS	
EU ELV	Not Relevant
Low-Halogen Status	Low-Halogen per IEC 61249-2-21
REACH SVHC	Not Contained per D(2024)4144-DC (27 June 2024)
EU RoHS	Compliant per EU 2015/863

[Multiple Part Product Compliance Statements](#)  
- Eu RoHS  
- REACH SVHC  
- Low-Halogen

[Multiple Part Industry Compliance Documents](#)

- IPC 1752A Class C
- IPC 1752A Class D
- Molex Product Compliance Declaration
- IEC-62474
- chemSHERPA (xml)

## EU RoHS Certificate of Compliance

---

### Part Details

#### General

Status	Active
Category	Connector Housings
Series	212415
Description	2.50mm Pitch, Board-In Crimp Housing, 2 Circuits, Right-Angle, Natural
Application	Signal, Wire-to-Board
Product Family	Board-in Connectors
Product Name	Board-in
UPC	193264513635

#### Physical

Circuits (maximum)	2
Color - Resin	Natural
Gender	N/A
Glow-Wire Capable	No
Material - Resin	Polyamide
Net Weight	0.062/g
Number of Rows	1
Packaging Type	Bag
Panel Mount	No
Pitch - Mating Interface	2.50mm
Stackable	No
Temperature Range - Operating	-40° to +105°C

---

#### Use with Part(s)

Description	Part Number
2.50mm Pitch, Board-in Male Crimp Terminal, Right-Angle, Brass Tin (Sn) Plating, 22-28 AWG, Reel	<u>350211001</u>
2.50mm Pitch, Board-in Male Crimp Terminal, Right-Angle, Tin (Sn) Plating, 22-28 AWG, Reel	<u>350211160</u>