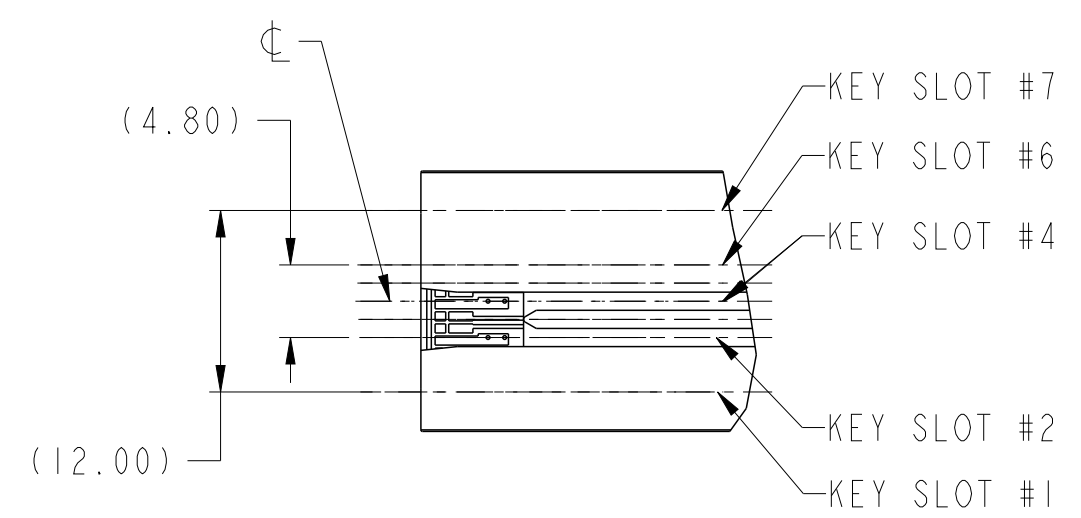
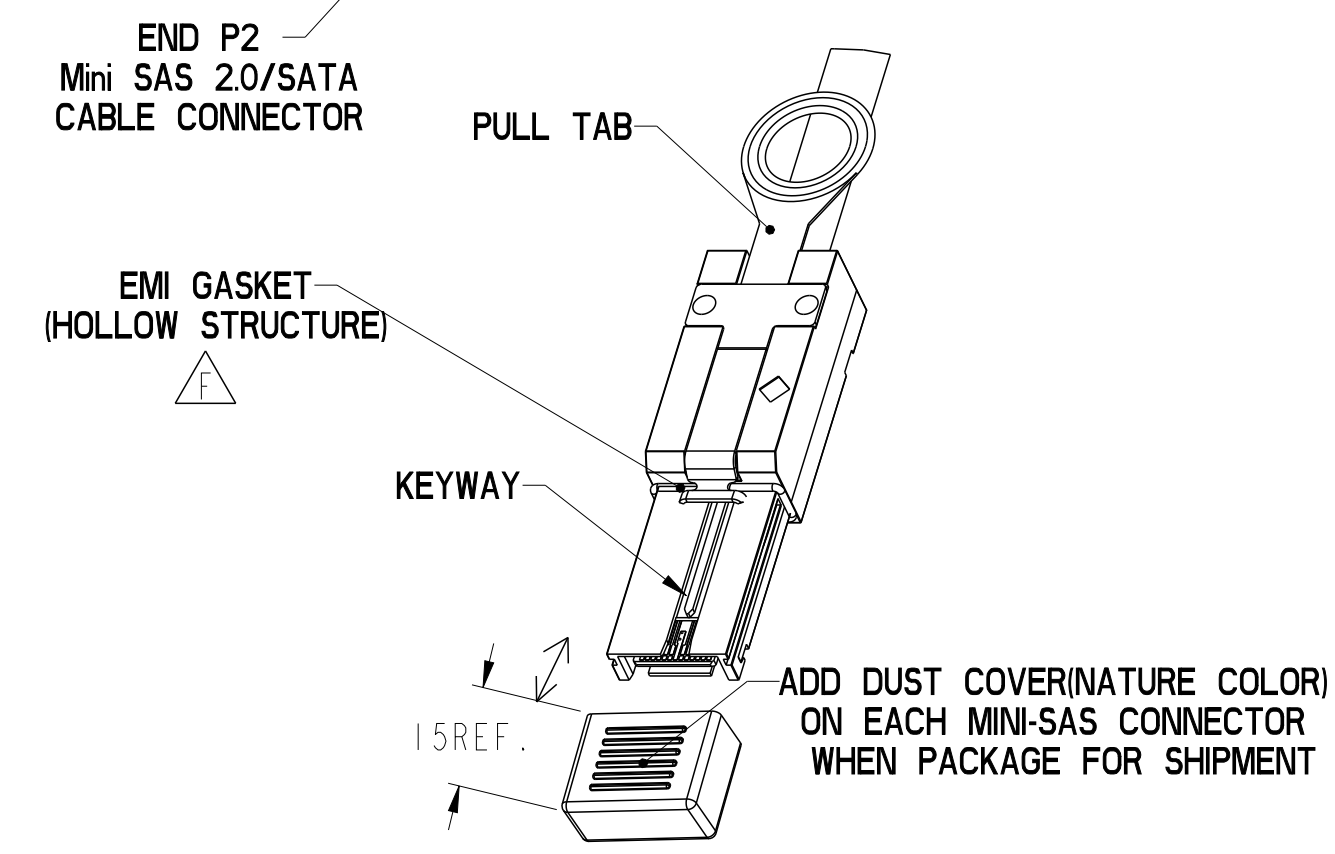


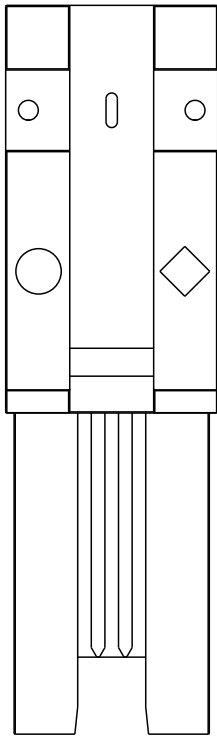
SEE DETAIL A



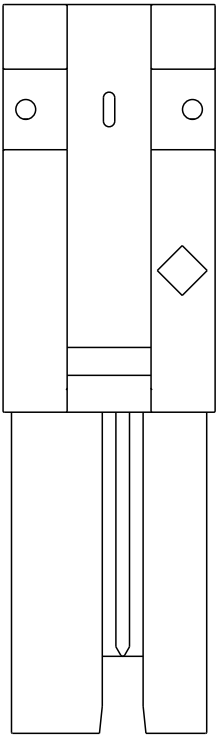
DETAIL A
KEY SLOTS #2 & #4 SHOWN
SCALE 2:1



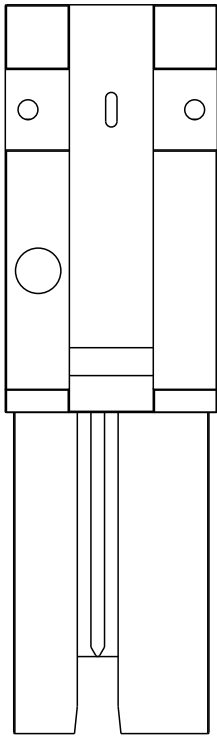
spec ref	---	dr	Deborah Ingram	2010/09/01	projection	MM	size	A3	scale	1:1
tolerance std	TOLERANCES UNLESS OTHERWISE SPECIFIED	eng	Tom Feng	2014/09/23			ecn no	ELX-N-18515-1		
---		chr	-	-			rel level	Released		
---		appr	Delhy Liu	2014/09/24	product family	C&A				
surface	linear	0.X	±0.3		title	FINAL ASSEMBLY - STANDARD	dwg no	10115796	rev	G
		0.XX	±0.10			Mini SAS 2.0/SATA				
		0.XXX	±0.050							
---	angular	0°	±2°		cat. no.	-	Product - Customer Drw	sheet 1 of 6		



KEY SLOT 2, 4 & 6
○◇ UNIVERSAL PORT



KEY SLOT 2 & 4
◇ OUT PORT



KEY SLOT 4 & 6
○ IN PORT

MINI SAS 2.0

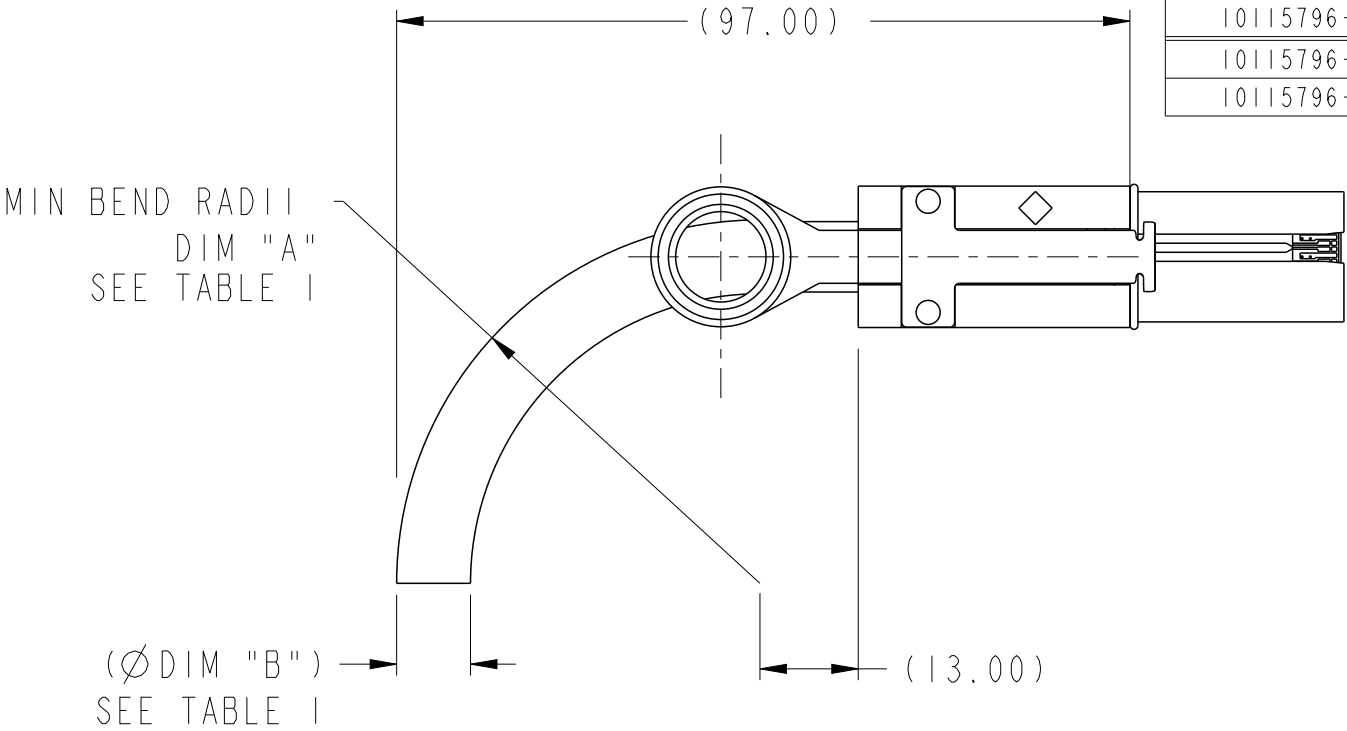
PRODUCT NUMBER SEE NOTE 4	HUAWEI PART NUMBER	DESCRIPTION	GAUGE	"DIM L" LENGTH	END P1 KEY SLOT	END P2 KEY SLOT	IDENTIFIER
10115796-M060002LF	/	X4 SAS CABLE ASSEMBLY	24 AWG	6M	4, 6	4, 6	SUBTRACTIVE ROUTING (IN PORT), SAS
10115796-N040002LF	/	X4 SAS CABLE ASSEMBLY	26 AWG	4M	4, 6	4, 6	
10115796-N050002LF	/	X4 SAS CABLE ASSEMBLY	26 AWG	5M	4, 6	4, 6	
10115796-P010002LF	/	X4 SAS CABLE ASSEMBLY	28 AWG	1M	4, 6	4, 6	
10115796-P020002LF	/	X4 SAS CABLE ASSEMBLY	28 AWG	2M	4, 6	4, 6	
10115796-P030002LF	/	X4 SAS CABLE ASSEMBLY	28 AWG	3M	4, 6	4, 6	
10115796-M060003LF	/	X4 SAS CABLE ASSEMBLY	24 AWG	6M	2, 4, 6	2, 4, 6	UNIVERSAL KEY, SAS
10115796-N040003LF	/	X4 SAS CABLE ASSEMBLY	26 AWG	4M	2, 4, 6	2, 4, 6	
10115796-N050003LF	/	X4 SAS CABLE ASSEMBLY	26 AWG	5M	2, 4, 6	2, 4, 6	
10115796-P003803LF	/	X4 SAS CABLE ASSEMBLY	28 AWG	0.38M	2, 4, 6	2, 4, 6	
10115796-P004003LF	/	X4 SAS CABLE ASSEMBLY	28 AWG	0.4M	2, 4, 6	2, 4, 6	
10115796-P004603LF	/	X4 SAS CABLE ASSEMBLY	28 AWG	0.46M	2, 4, 6	2, 4, 6	
10115796-P004803LF	/	X4 SAS CABLE ASSEMBLY	28 AWG	0.48M	2, 4, 6	2, 4, 6	
10115796-P005003LF	/	X4 SAS CABLE ASSEMBLY	28 AWG	0.5M	2, 4, 6	2, 4, 6	
10115796-P010003LF	0405G002	X4 SAS CABLE ASSEMBLY	28 AWG	1M	2, 4, 6	2, 4, 6	
10115796-P015003LF	/	X4 SAS CABLE ASSEMBLY	28 AWG	1.5M	2, 4, 6	2, 4, 6	
10115796-P020003LF	/	X4 SAS CABLE ASSEMBLY	28 AWG	2M	2, 4, 6	2, 4, 6	
10115796-P025003LF	/	X4 SAS CABLE ASSEMBLY	28 AWG	2.5M	2, 4, 6	2, 4, 6	
10115796-P030003LF	0405G004	X4 SAS CABLE ASSEMBLY	28 AWG	3M	2, 4, 6	2, 4, 6	
10115796-M060006LF	/	X4 SAS CABLE ASSEMBLY	24 AWG	6M	2, 4	4, 6	SAS, TABLE ROUTING (OUT PORT), TO SUBTRACTIVE ROUTING (IN PORT)
10115796-N040006LF	/	X4 SAS CABLE ASSEMBLY	26 AWG	4M	2, 4	4, 6	
10115796-N050006LF	/	X4 SAS CABLE ASSEMBLY	26 AWG	5M	2, 4	4, 6	
10115796-P007106LF	/	X4 SAS CABLE ASSEMBLY	28 AWG	0.71M	2, 4	4, 6	
10115796-P010006LF	/	X4 SAS CABLE ASSEMBLY	28 AWG	1M	2, 4	4, 6	
10115796-P015006LF	/	X4 SAS CABLE ASSEMBLY	28 AWG	1.5M	2, 4	4, 6	
10115796-P020006LF	/	X4 SAS CABLE ASSEMBLY	28 AWG	2M	2, 4	4, 6	
10115796-P030006LF	/	X4 SAS CABLE ASSEMBLY	28 AWG	3M	2, 4	4, 6	

MINI SAS 2.0 KEYING OPTIONS

spec ref		---		dr		Deborah Ingram		2010/09/01		projection		MM		size		A3		scale		1:1							
tolerance std		TOLERANCES UNLESS OTHERWISE SPECIFIED		eng		Tom Feng		2014/09/23						ecn no		ELX-N-18515-1		rel level		Released							
---				chr		-		-																			
---				appr		Delhy Liu		2014/09/24														product family		C&A			
surface				linear		0.X		±0.3				title		FINAL ASSEMBLY - STANDARD		dwg no		10115796		rev		G					
---																								0.XX		±0.10	
---																								0.XXX		±0.050	
angular		0°		±2°		www.fci.com		cat. no.		-		Product - Customer Drw		sheet 2 of 6													

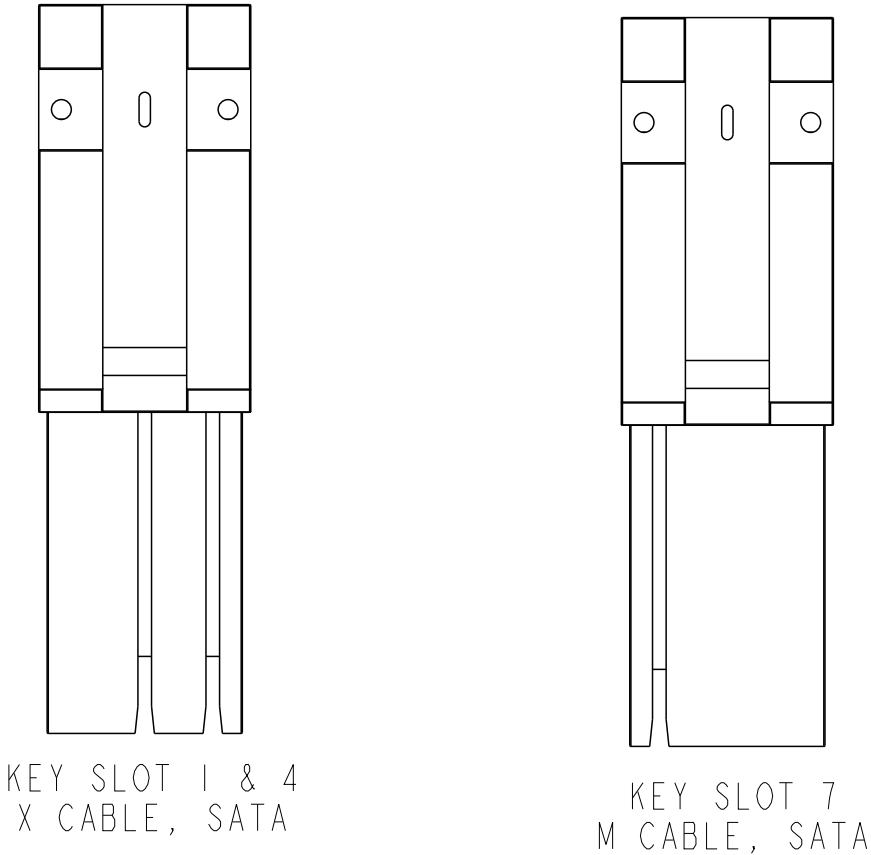
SATA

PRODUCT NUMBER SEE NOTE 4	DESCRIPTION	GAUGE	"DIM L" LENGTH	END P1 KEY SLOT	END P2 KEY SLOT	IDENTIFIER
10115796-M060004LF	X4 SATA CABLE ASSEMBLY	24 AWG	6M	1,4	1,4	X CABLE, SATA
10115796-N020004LF	X4 SATA CABLE ASSEMBLY	26 AWG	2M	1,4	1,4	
10115796-N040004LF	X4 SATA CABLE ASSEMBLY	26 AWG	4M	1,4	1,4	
10115796-N050004LF	X4 SATA CABLE ASSEMBLY	26 AWG	5M	1,4	1,4	
10115796-P010004LF	X4 SATA CABLE ASSEMBLY	28 AWG	1M	1,4	1,4	
10115796-P030004LF	X4 SATA CABLE ASSEMBLY	28 AWG	3M	1,4	1,4	
10115796-M060005LF	X4 SATA CABLE ASSEMBLY	24 AWG	6M	7	7	M CABLE, SATA
10115796-N020005LF	X4 SATA CABLE ASSEMBLY	26 AWG	2M	7	7	
10115796-N040005LF	X4 SATA CABLE ASSEMBLY	26 AWG	4M	7	7	
10115796-N050005LF	X4 SATA CABLE ASSEMBLY	26 AWG	5M	7	7	
10115796-P010005LF	X4 SATA CABLE ASSEMBLY	28 AWG	1M	7	7	
10115796-P030005LF	X4 SATA CABLE ASSEMBLY	28 AWG	3M	7	7	



BEND RADIUS
(24 AWG SHOWN)

TABLE 1		
CABLE	DIM "A"	DIM "B"
24 AWG	TBD	TBD
26 AWG	TBD	TBD
28 AWG	TBD	TBD



SATA KEYING OPTIONS

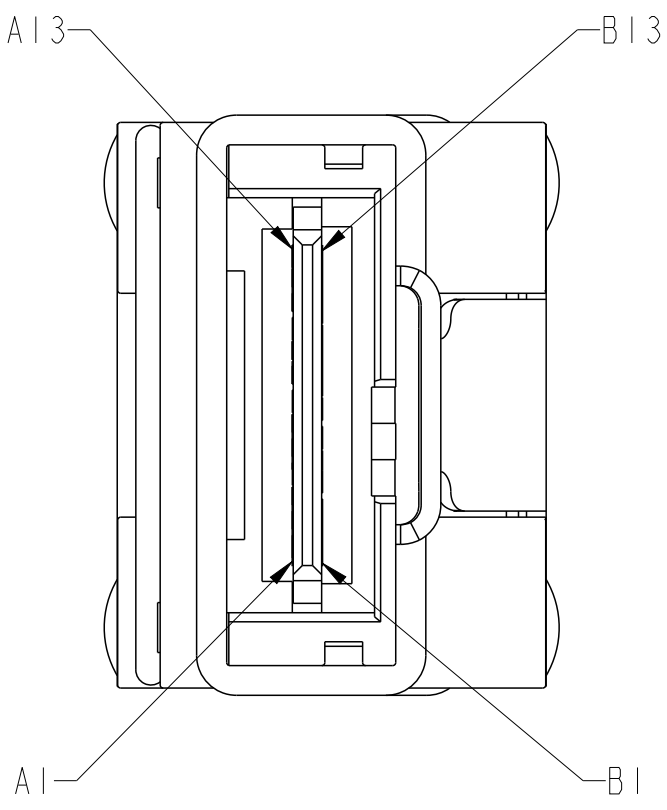
spec ref ---				dr Deborah Ingram		2010/09/01		projection		MM		size A3		scale 1:1	
tolerance std --- --- TOLERANCES UNLESS OTHERWISE SPECIFIED				eng Tom Feng		2014/09/23						ecn no ELX-N-18515-1			
				chr -		-									
				appr Delhly Liu		2014/09/24									
surface - ✓ ---				linear		0.X ±0.3				title FINAL ASSEMBLY - STANDARD Mini SAS 2.0/SATA		dwg no 10115796		rev G	
						0.XX ±0.10									
						0.XXX ±0.050									
angular				0° ±2°		www.fci.com		cat. no. -		Product - Customer Drw		sheet 3 of 6			



Copyright FCI.

WIRING LIST SEE NOTE 7

P1	GND	A1	—	B1	GND	P2
	Rx 0+	A2	←	B2	Tx 0+	
	Rx 0-	A3	←	B3	Tx 0-	
	GND	A4	—	B4	GND	
	Rx 1+	A5	←	B5	Tx 1+	
	Rx 1-	A6	←	B6	Tx 1-	
	GND	A7	—	B7	GND	
	Rx 2+	A8	←	B8	Tx 2+	
	Rx 2-	A9	←	B9	Tx 2-	
	GND	A10	—	B10	GND	
	Rx 3+	A11	←	B11	Tx 3+	
	Rx 3-	A12	←	B12	Tx 3-	
	GND	A13	—	B13	GND	
	GND	B1	—	A1	GND	
	Tx 0+	B2	→	A2	Rx 0+	
	Tx 0-	B3	→	A3	Rx 0-	
	GND	B4	—	A4	GND	
	Tx 1+	B5	→	A5	Rx 1+	
	Tx 1-	B6	→	A6	Rx 1-	
	GND	B7	—	A7	GND	
	Tx 2+	B8	→	A8	Rx 2+	
	Tx 2-	B9	→	A9	Rx 2-	
	GND	B10	—	A10	GND	
	Tx 3+	B11	→	A11	Rx 3+	
	Tx 3-	B12	→	A12	Rx 3-	
	GND	B13	—	A13	GND	



spec ref ---				dr Deborah Ingram	2010/09/01	projection 	MM ←→	size A3	scale 4:1	
tolerance std --- TOLERANCES UNLESS OTHERWISE SPECIFIED				eng Tom Feng	2014/09/23			ecn no ELX-N-18515-1		
				chr -	-			rel level Released		
surface - ✓				appr Delhly Liu	2014/09/24	product family C&A		rev G		
linear				FCI			FINAL ASSEMBLY - STANDARD		dwg no 10115796	
angular				Mini SAS 2.0/SATA			cat. no. -		Product - Customer Drw	
0.X ±0.3				www.fci.com			sheet 4 of 6			
0.XX ±0.10										
0.XXX ±0.050										
0° ±2°										

- NOTES:
- 1 - MATERIAL:
BACKSHELLS: ZINC DIECAST
PULL TAB: MOLDED THERMOPLASTIC
LATCH: STAINLESS STEEL
JET MELT: POLYAMIDE POLYMER
- 2 - ELECTRICAL PERFORMANCE PER CURRENT REVISION
OF SERIAL ATA, T10/I760-D (SAS-2 REQUIREMENTS).
- ③ - THIS PRODUCT MEETS THE RESTRICTION OF HAZARDOUS SUBSTANCES IN
ELECTRICAL AND ELECTRONIC EQUIPMENT (RoHS) DIRECTIVE (2011/65/EU)

4 - PART NUMBER DESCRIPTION

10115796 - X XX XX XX LF

LEAD FREE (SEE NOTE 3 AND 10)

KEY SLOT

01: KEY SLOT 2,4

02: KEY SLOT 4,6

03: KEY SLOT 2,4,6

04: KEY SLOT 1,4

05: KEY SLOT 7

06: P1= KEY SLOT 2,4 P2= KEY SLOT 4,6

LENGTH

XX= METERS, XX=CENTIMETERS

0100 = 01 METERS, 00 CENTIMETERS ("DIM L")

GAUGE

M: 24 AWG

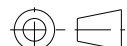


N: 26 AWG

P: 28 AWG

⑤ - UNLESS OTHERWISE SPECIFIED ASSEMBLED LENGTH TOLERANCE IS TO BE:

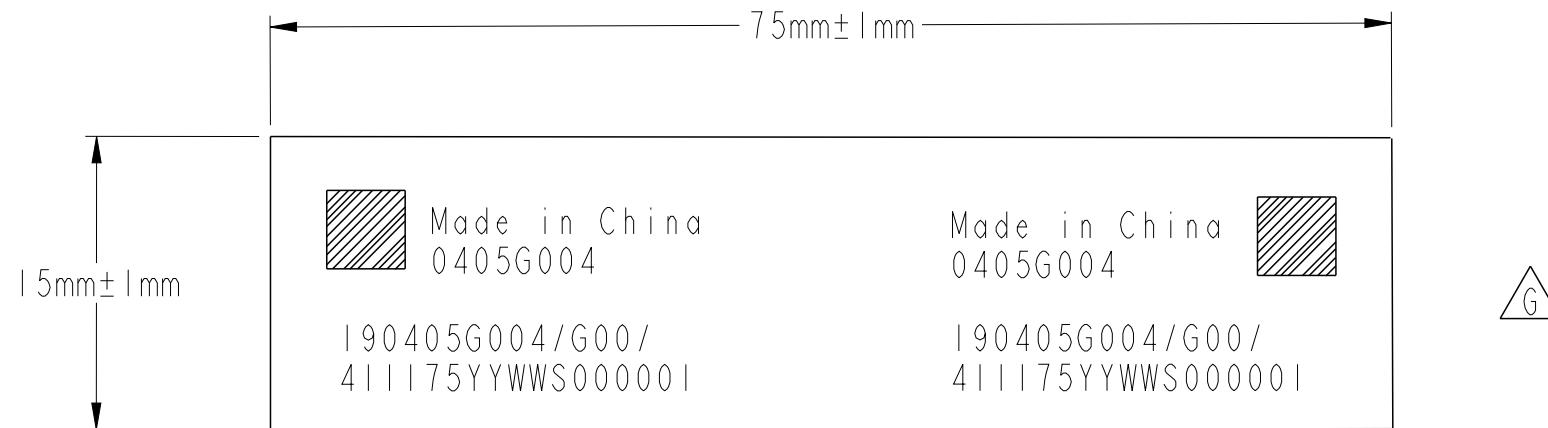
< 1 METER = $\pm 25.0\text{mm}$

>= 1 METER TO 6 METERS = $\pm 2\%$ OF "DIM L"

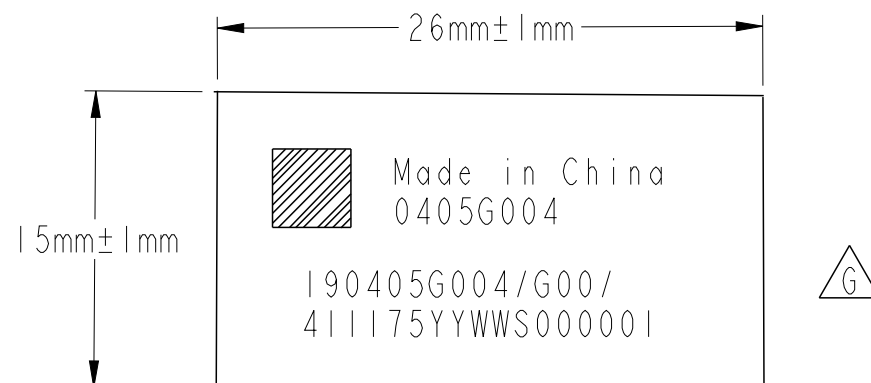
spec ref ---				dr Deborah Ingram		2010/09/01		projection		MM		size A3		scale 1:1			
tolerance std --- ---				TOLERANCES UNLESS OTHERWISE SPECIFIED				eng Tom Feng		2014/09/23						ecn no ELX-N-18515-1	
				chr -		-											
				appr Delhy Liu		2014/09/24		product family C&A				rel level Released					
surface - ✓		linear		0.X ±0.3				title FINAL ASSEMBLY - STANDARD Mini SAS 2.0/SATA				dwg no 10115796		rev G			
				0.XX ±0.10													
				0.XXX ±0.050													
---		angular		0° ±2°		www.fci.com		cat. no. -		Product - Customer Drw				sheet 5 of 6			

NOTES CONTINUED:

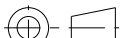


- ⑥ - UNLESS OTHERWISE SPECIFIED LABEL POSITION IS TO BE 100mm FROM REAR OF CONNECTOR.
LABEL DETAILS:



- ⑦ - ALL CABLE ASSEMBLIES SHALL BE 100% TESTED FOR CONTINUITY AS DEFINED IN WIRING LIST.
- 8 - UNLESS OTHERWISE SPECIFIED ALL CABLE ASSEMBLIES SHALL BE 100% HI-POT TESTED BY APPLYING 300V DC FOR A MINIMUM OF 10ms, UNLESS ACTIVE COMPONENTS ARE USED IN THIS ASSEMBLY.
- 9 - OTHER TESTING PERFORMED AS REQUIRED BY PRODUCT SPECIFICATION: GS-12-548.
- 10 - PACKAGING OF LEAD FREE PRODUCTS MEETS LABELING AND PACKAGING PER SPECIFICATION GS-14-920. PACKAGE CABLE ASSEMBLIES PER GS-14-1272. ADD DUST COVER ON MINI-SAS CONNECTOR WHEN PACKAGE FOR SHIPMENT NEED STICK BELOW LABEL ON PE BAG.



11. THIS DIMENSION IS A FINISHED PRODUCT LENGTH.

spec ref				---		dr		Deborah Ingram		2010/09/01		projection						MM		size		A3		scale		1:1															
tolerance std				---		eng		Tom Feng		2014/09/23		chr		-		-		ecn no		ELX-N-18515-1																					
---				TOLERANCES UNLESS OTHERWISE SPECIFIED		appr		Dehly Liu		2014/09/24		product family										C&A		rel level						Released											
surface				- ✓		linear		0.X		±0.3				title		FINAL ASSEMBLY - STANDARD										dwg no		10115796										rev		G	
---				angular		0°		±2°°		www.fci.com		cat. no.		-		Product - Customer Drw										sheet 6 of 6															

Mouser Electronics

Authorized Distributor

Click to View Pricing, Inventory, Delivery & Lifecycle Information:

[FCI / Amphenol:](#)

[10115796-P015003LF](#) [10115796-P010003LF](#) [10115796-P015006LF](#) [10115796-P020003LF](#) [10115796-P005003LF](#)