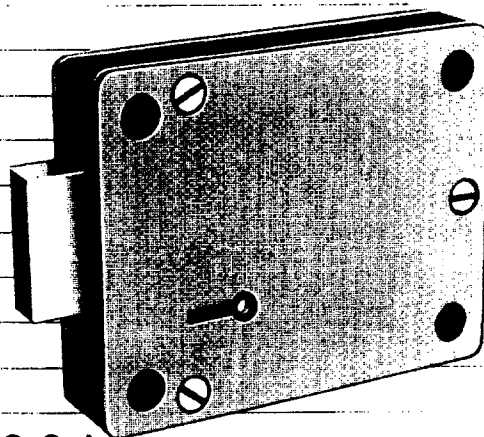
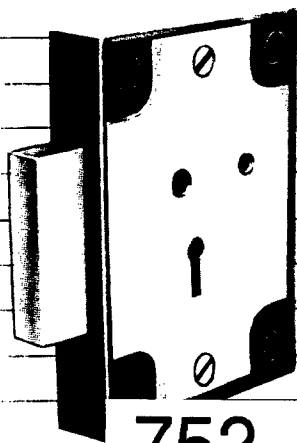


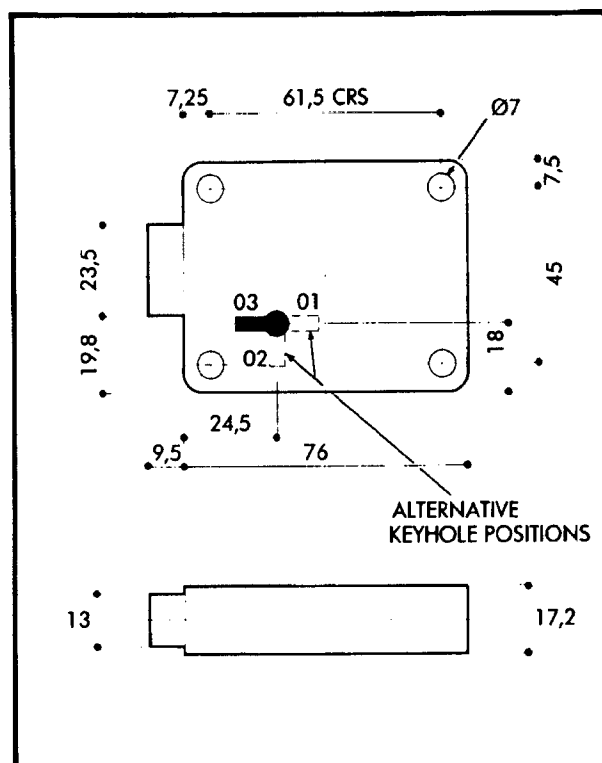
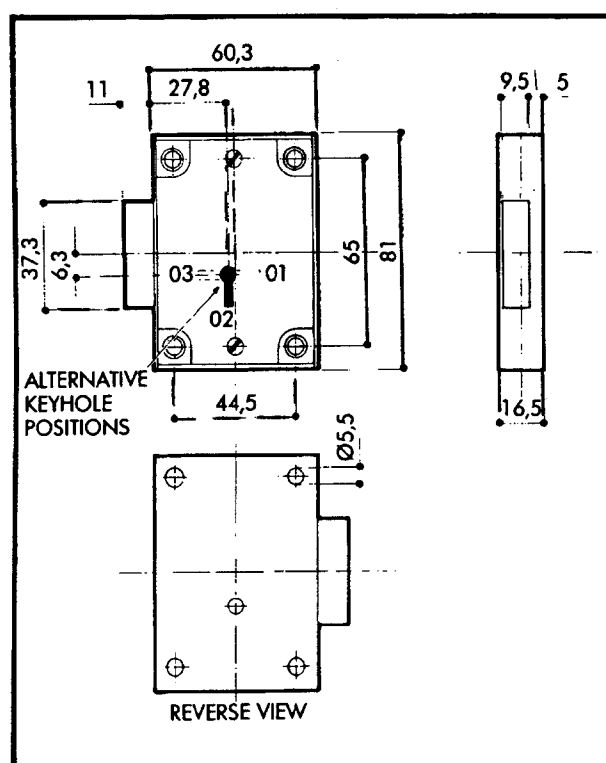
7 Lever Safe Locks



2802

752-161

3001



PRODUCT
REFERENCE
NUMBERS 6

2802-0200

2802-5200

COMBINATIONS

12,000 NON MASTERED

1,000 MASTERED

SPECIFICATION:-
STEEL CASE WITH LOCKING BOLT AND INTERNAL LEVER
MECHANISM IN BRASS.
PHOSPHOR BRONZE SPRINGS. STEEL KEYS - NICKEL
PLATED.
THIS LOCK IS SUPPLIED WITH FIXING HOLES FITTED WITH
REINFORCING SPACERS.
LOCK CAN BE SUPPLIED WITH A KEY RETAINING FEATURE
SO THAT KEY CAN ONLY BE REMOVED IN THE LOCKED
POSITION.

AVAILABLE WITH Ø19,5 KEY ENTRY BUSH 2802-0200

ANTI-PICK LEVERS FITTED TO ORDER

STANDARD FINISH ZINC PLATED & PASSIVATED

PRODUCT
REFERENCE
NUMBERS

3001-0300

KEY
SERIES

42

COMBINATIONS

10,000

ANTI-PICK LEVERS FITTED AS STANDARD

BOLTFACE MAY BE DRILLED AND TAPPED AS REQUIRED

KEYS - STEEL - DIMENSION BIT TO BOW
20,48 OR 57mm

STANDARD FINISHES ZINC PLATED AND PASSIVATED