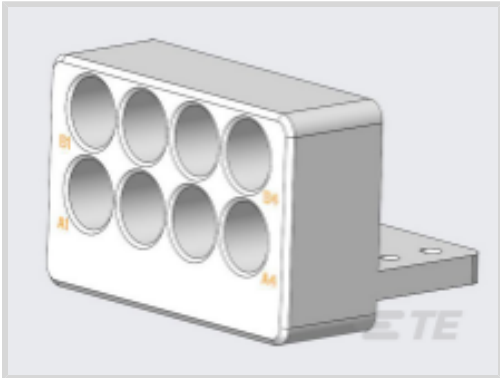




Connectors > RF Connectors > RF Modules > PCB RF Modules



Number of Coaxial Contacts: 8

PCB Mount Orientation: Right Angle

Body Material: Stainless Steel

Connector System: Cable-to-Cable

Number of Positions: 8

Features

Product Type Features

Connector System	Cable-to-Cable
Connector & Contact Terminates To	Wire & Cable

Configuration Features

Number of Coaxial Contacts	8
PCB Mount Orientation	Right Angle
Number of Positions	8

Body Features

Body Plating Material	Passivated
Body Material	Stainless Steel

Mechanical Attachment

Connector Mounting Type	Board Mount
-------------------------	-------------

Housing Features

Centerline (Pitch)	6.1 mm[.24 in]
--------------------	----------------

Dimensions

RF Contact Spacing	6.1 mm[.24 in]
--------------------	----------------

Usage Conditions

Operating Temperature Range	-55 – 105 °C[-67 – 221 °F]
-----------------------------	----------------------------



Operation/Application

Circuit Application	Signal
---------------------	--------

Product Compliance

For compliance documentation, visit the product page on TE.com>

EU RoHS Directive 2011/65/EU	Compliant
EU ELV Directive 2000/53/EC	Compliant
China RoHS 2 Directive MIIT Order No 32, 2016	No Restricted Materials Above Threshold
EU REACH Regulation (EC) No. 1907/2006	Current ECHA Candidate List: JUNE 2024 (241) Candidate List Declared Against: JAN 2024 (240) Does not contain REACH SVHC
Halogen Content	Low Halogen - Br, Cl, F, I < 900 ppm per homogenous material. Also BFR/CFR/PVC Free
Solder Process Capability	Not applicable for solder process capability

Product Compliance Disclaimer

This information is provided based on reasonable inquiry of our suppliers and represents our current actual knowledge based on the information they provided. This information is subject to change. The part numbers that TE has identified as EU RoHS compliant have a maximum concentration of 0.1% by weight in homogenous materials for lead, hexavalent chromium, mercury, PBB, PBDE, DBP, BBP, DEHP, DIBP, and 0.01% for cadmium, or qualify for an exemption to these limits as defined in the Annexes of Directive 2011/65/EU (RoHS2). Finished electrical and electronic equipment products will be CE marked as required by Directive 2011/65/EU. Components may not be CE marked. Additionally, the part numbers that TE has identified as EU ELV compliant have a maximum concentration of 0.1% by weight in homogenous materials for lead, hexavalent chromium, and mercury, and 0.01% for cadmium, or qualify for an exemption to these limits as defined in the Annexes of Directive 2000/53/EC (ELV). Regarding the REACH Regulation, the information TE provides on SVHC in articles for this part number is based on the latest European Chemicals Agency (ECHA) 'Guidance on requirements for substances in articles' posted at this URL: <https://echa.europa.eu/guidance-documents/guidance-on-reach>

Also in the Series | AMP VITA 67

Coax Connectors(6)

PCB RF Modules(9)

Customers Also Bought





TE Part #6609068-2  
[16AYA6A=F7745A](#)



TE Part #CTJ-3A-10-4021  
[RAIL ASSY](#)



TE Part #260516-001  
[F42-60-FR](#)



TE Part #320551  
[PIDG Ring Tongue Terminals](#)



TE Part #744861-000  
[S02-12-R](#)



TE Part #1054869-1  
[2084 0000 02](#)



TE Part #CONSMA011  
[SMA Jack 50 Ohm Cable Crimp](#)

Documents

Product Drawings

8 POS PCB MNT RF MODULE W/ PINS & MARK

English

CAD Files

3D PDF

3D

Customer View Model

[ENG\\_CVM\\_CVM\\_2101924-4\\_F.2d\\_dxf.zip](#)

English

Customer View Model

[ENG\\_CVM\\_CVM\\_2101924-4\\_F.3d\\_igs.zip](#)

English

Customer View Model

[ENG\\_CVM\\_CVM\\_2101924-4\\_F.3d\\_stp.zip](#)

English

By downloading the CAD file I accept and agree to the [Terms and Conditions](#) of use.

Instruction Sheets

[Instruction Sheet \(U.S.\)](#)

English