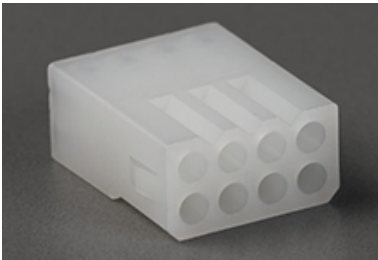




Part Number : [1501792080](#)
Product Description : Standard .062"+
Receptacle Housing, Dual Row, 8 Circuits
Series Number : 150179
Status : Active
Product Category : Connector Housings



Documents & Resources


Drawings
[1501792080_sd.pdf](#)

3D Models and Design Files
[1501792080_stp.zip](#)

Specifications
[1501760001-AS-000.pdf](#)
[PK-150176-001-001.pdf](#)
[1501760001-PS-000.pdf](#)
[1501760001-TS-000.pdf](#)

Product Environment Compliance

Compliance

GADSL/IMDS	Not Relevant
China RoHS	
EU ELV	Compliant per 2000/53/EC
Low-Halogen Status	Low-Halogen per IEC 61249-2-21
REACH SVHC	Not Contained per D(2024)4144-DC (27 June 2024)
EU RoHS	Compliant per EU 2015/863

Multiple Part Product Compliance Statements

- Eu RoHS
- REACH SVHC
- Low-Halogen

Multiple Part Industry Compliance Documents

- IPC 1752A Class C

- IPC 1752A Class D
- Molex Product Compliance Declaration
- IEC-62474
- chemSHERPA (xml)

EU RoHS Certificate of Compliance

Part Details

General

Status	Active
Category	Connector Housings
Series	150179
Description	Standard .062"+ Receptacle Housing, Dual Row, 8 Circuits
Application	Power, Wire-to-Wire
Product Name	Standard .062"+
UPC	889056490313

Agency

UL	E29179
----	--------

Physical

Circuits (maximum)	8
Color - Resin	Natural
Flammability	94V-2
Gender	Receptacle
Glow-Wire Capable	No
Keying to Mating Part	None
Lock to Mating Part	Yes
Material - Resin	Nylon
Net Weight	2.056/g
Number of Rows	2
Packaging Type	Bag
Panel Mount	N/A
Pitch - Mating Interface	3.68mm
Pitch - Termination Interface	3.68mm

Polarized to Mating Part	Yes
Stackable	No
Temperature Range - Operating	-40° to +105°C

Mates With / Use With

Mates with Part(s)

Description	Part Number
Standard .062"+ Dual Row Plug Housings	<u>150177</u>

Use with Part(s)

Description	Part Number
Standard .062"+ Female Terminals	<u>150181</u>