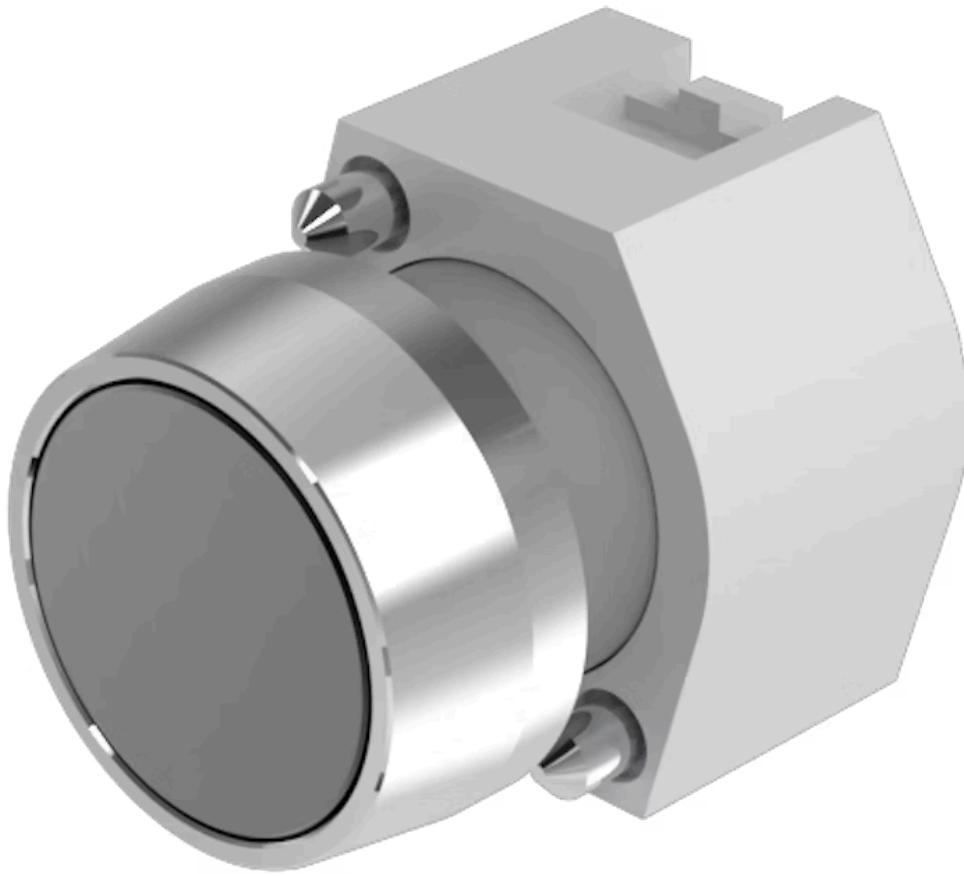


Actuator

704.041.0

Distribution by
DigiKey

DigiKey



<https://digikey.eao.com/p/704.041.0>

Your product:



704.041.0 Actuator

FRONT

Front bezel material:	Aluminium
Front dimension:	Ø 29 mm
Front bezel colour:	Nature
Front form:	round

MOUNTING

Design:	raised
---------	--------

OPERATING-/INDICATION PART

Lens shape:	flush
Lens illumination:	non illuminative
Lens material:	Aluminium
Lens colour:	Black
Lens optics:	opaque

ELECTRICAL CHARACTERISTICS

Standards:	The switches comply with the "Standards for low-voltage switching devices" DIN EN 60947-1
------------	---

MECHANICAL CHARACTERISTIC

Switching action:	Maintained
Operating force:	8 N
Operating Travel:	ca. 5.8 mm ± 0.2 mm

Mechanical lifetime: ≤3 Mio. cycles of operation

Weight: 0.04 kg

AMBIENT CONDITION

IP Protection: IP65 front side

Storage temperature: – 40 °C ... + 85 °C

Operating temperature: – 40 °C ... + 55 °C

OTHER

Hints: Frontring with protective cover to be mounted with a torque of 0.4 Nm onto actuator, Max. 3 switching elements can be clipped on

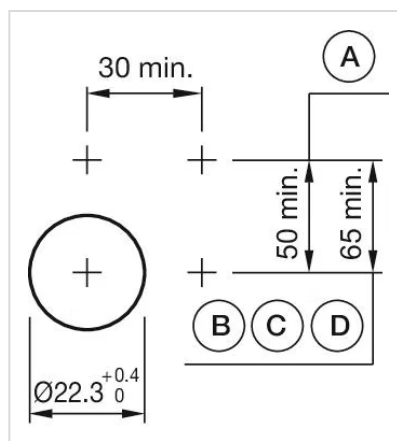
max. number of switching elements: 3

Housing material: Plastic

Housing colour: Grey

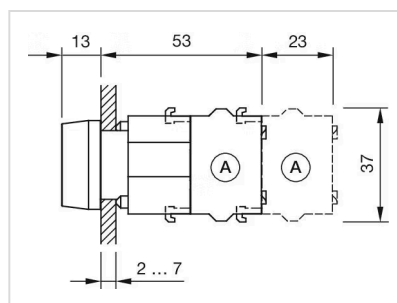
Short Description: Actuator, Ø 29 mm, flush, non illuminative, Black, Aluminium, opaque, round, Nature, Aluminium, anodised, Maintained

Mounting cut-outs:



A = Screw terminal
B = Push-in terminal (PIT)
C = Plug-in terminal 6.3 mm x 0.8 mm
D = Double plug-in terminal 6.3 mm x 0.8 mm

Dimension drawings:



A = Screw terminal

Wiring diagrams:

E_v-