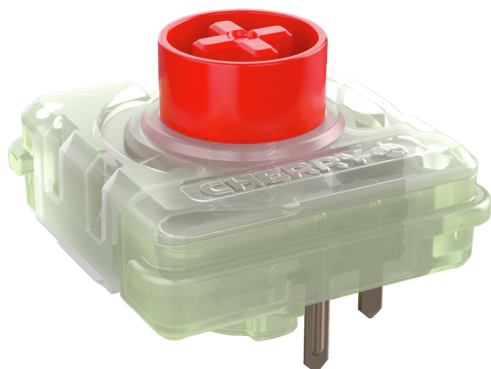


MX LP

Quick-witted, smooth and direct



Models may vary from the image shown

Original CHERRY MX is the world's leading precision technology for mechanical keyboard switches. The CHERRY Gold Crosspoint contact mechanism and the "Made in Germany" manufacturing quality are unique. The CHERRY MX LOW PROFILE is a high-precision CHERRY MX switch, specially designed for notebook and desktop applications with a low profile.

FUNCTION AND PERFORMANCE

- Linear switching
- 45 cN operating force
- 1.2 mm pre travel
- 3.2 mm total travel
- No click

TECHNICAL DATA

Weight of product incl. packaging (g):	0.05 oz
Dimensions product incl. packaging:	9,45 in x 9,45 in x 4,33 in
Content of master carton (pieces):	1,200.00000000000000
Weight of master carton incl. content (g):	465.62 oz
Dimensions master carton:	21.65 in x 31.5 in x 40.94 in

Errors, technical changes and delivery options reserved. Technical information refers only to the specification of the products. Properties are not guaranteed.

EAN & Part number

4025112094392
MX1B-L2NA

4025112090462
ZMX1B-L2NA

Please contact your local CHERRY service and support teams or your CHERRY sales partners for versions available in your country.