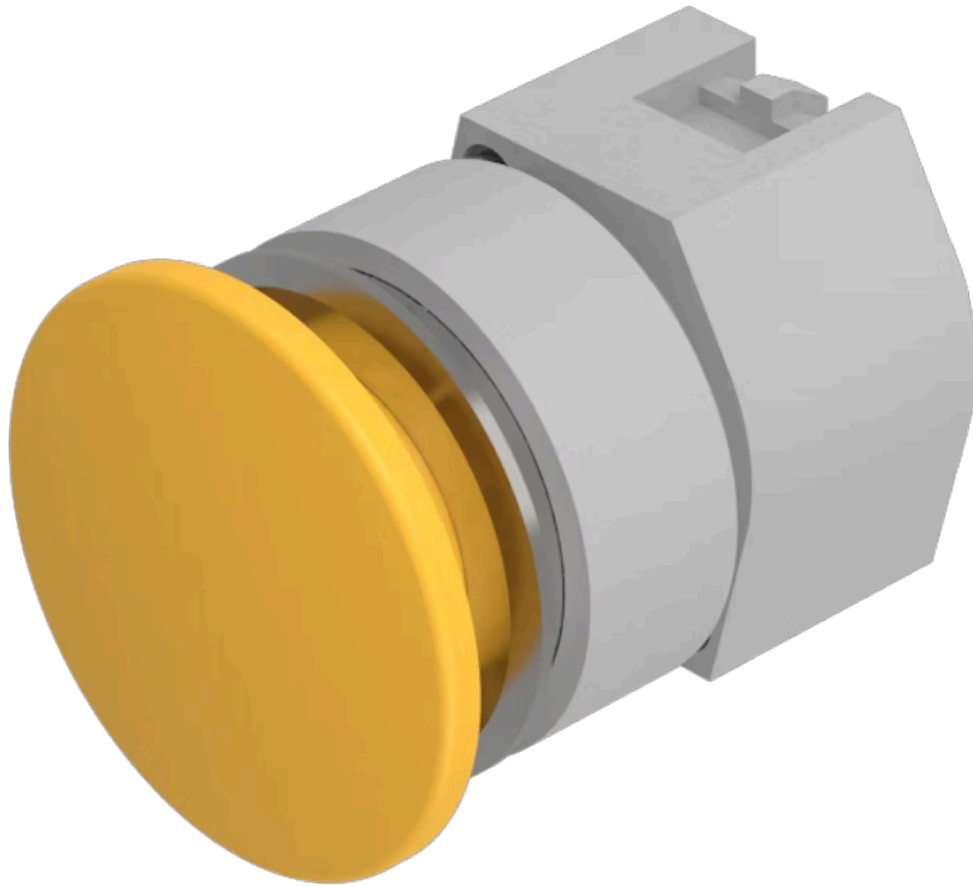


Actuator

704.071.418

Distribution by
DigiKey

DigiKey



<https://digikey.eao.com/p/704.071.418>

Your product:



704.071.418 Actuator

FRONT

Front dimension:	Ø 40 mm
Front bezel colour:	Nature
Front bezel material:	Aluminium

MOUNTING

Mounting cut-out:	Ø 30.5 mm
Design:	flush

OPERATING-/INDICATION PART

Lens illumination:	non illuminative
Lens shape:	mushroom-head
Lens material:	Plastic
Lens colour:	Yellow
Lens optics:	opaque

ELECTRICAL CHARACTERISTICS

Standards:	The switches comply with the "Standards for low-voltage switching devices" DIN EN 60947-1
------------	---

MECHANICAL CHARACTERISTIC

Operating force:	6.2 N
Operating Travel:	ca. 5.8 mm ± 0.2 mm
Mechanical lifetime:	≤3 Mio. cycles of operation

Weight: 0.041 kg

Switching action: Momentary

AMBIENT CONDITION

Storage temperature: – 40 °C ... + 85 °C

Operating temperature: – 40 °C ... + 55 °C

IP Protection: IP65 front side

OTHER

Hints: Max. 3 switching elements can be clipped on, The colour of anodised aluminium parts can vary due to technical production reasons

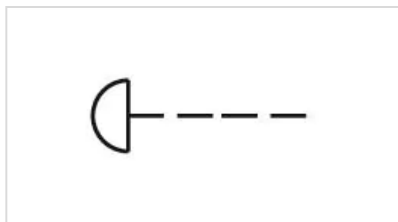
max. number of switching elements: 3

Housing colour: Grey

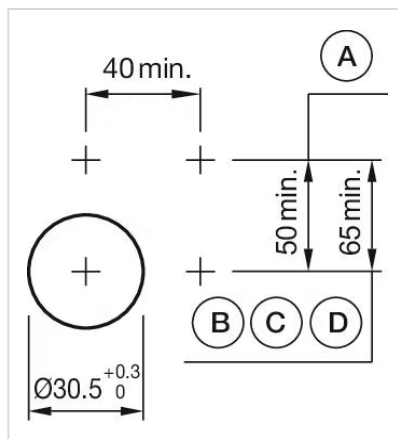
Housing material: Plastic

Short Description: Actuator, Ø 30.5 mm, Ø 40 mm, mushroom-head, non illuminative, Yellow, Plastic, opaque, Nature, Aluminium, anodised, Momentary

Wiring diagrams:

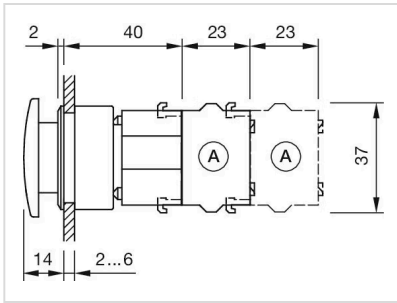


Mounting cut-outs:



A = Screw terminal
B = Push-in terminal (PIT)
C = Plug-in terminal 6.3 mm x 0.8 mm
D = Double plug-in terminal 6.3 mm x 0.8 mm

Dimension drawings:



A = Screw terminal