

**ASO ONLY (APPLICATION SPECIFIC ORDER)**

TABLE 1

EDGE MOUNT THICKNESS	"A"	"B"	"C"	BODY	CONTACT
-EM2	.130[3.30]	.0670[1.702]	.058[1.47]	QTH-30-01-D-EM2-XX	T-1S42-01-X
*.EM3	.160[4.06]	.0980[2.489]	.088[2.24]	QTH-30-01-D-EM3-XX	T-1S42-02-X

TABLE 2

No OF PAIRS	MAX BOW	GND PLANE COPLANARITY
-020, -040, -060	.004 [.10]	.004 [.10]
-080, -100	.006 [.15]	.005 [.13]

\* = SEE NOTE 1

QTH-XXX-01-X-D-DP-EMX

No OF POSITIONS

-020, -040, -060,  
\*\*-080, \*\*-100  
(PER ROW)

\*\*SEE NOTE 12

LEAD STYLE ———  
-01: .1680[4.267]

- EDGE MOUNT THICKNESS

-EM2: .064[1.63] +/- .004 PCB  
(USE QTH-30-01-D-EM2-XX  
& T-1S42-01-X)

**-EM3:**  
(USE QTH-30-01-D-EM3-XX  
& T-1S42-02-X)

**SEE NOTE 11**

### DIFFERENTIAL PAIR

ROW SPECIFICATION  
-D: DOUBLE [SEE TABLE 1]  
(USE QTH-30-01-D-EMX-XX)

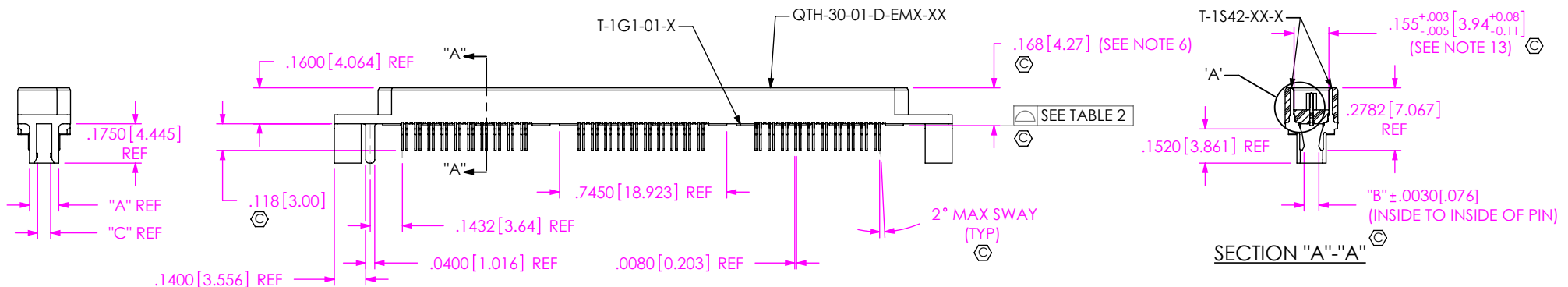
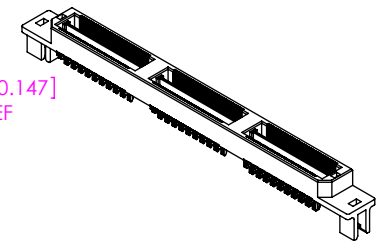
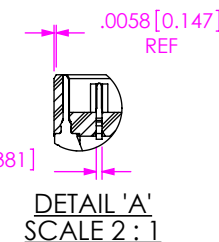
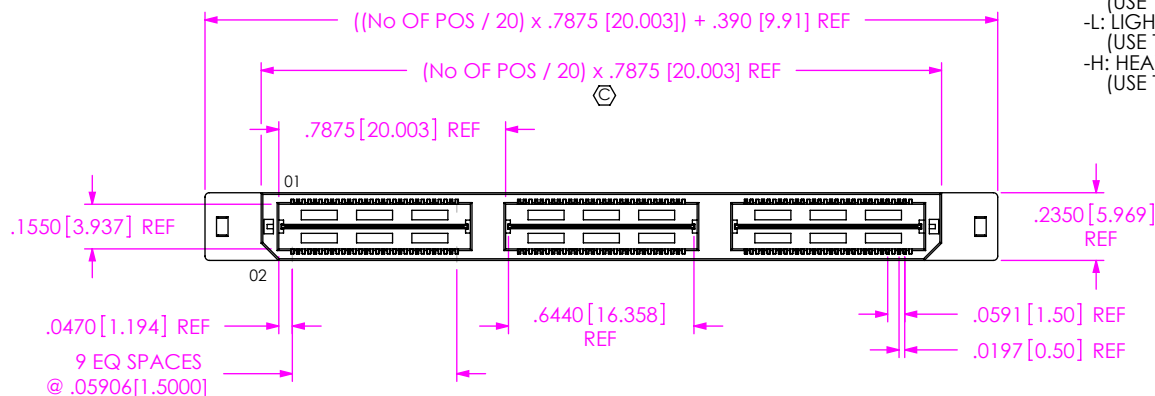
No OF BANKS -

## PLATING SPECIFICATION

-F: FLASH SELECTIVE GOLD [SEE NOTE 7]  
(USE T-1S42-XX-F & T-1G1-01-F)

-L: LIGHT SELECTIVE GOLD  
(USE T-1S42-XX-L & T-1G1-01-L)

-H: HEAVY GOLD  
(USE T-1S42-XX-H & T-1G1-01-G)



NOTES:

1. Ⓢ REPRESENTS A CRITICAL DIMENSION.
2. BURR ALLOWANCE: .0015[.038] MAX.
3. MINIMUM PUSHOUT FORCE: 5 OZ.
4. MINIMUM GROUND PLANE RETENTION: 1 LB.
5. PARTS TO BE MOLDED TO POSITION.
6. MAXIMUM VARIANCE .002[.05].
7. -L PLATING CAN BE SUBSTITUTED FOR -F PLATING.
8. NOTE DELETED
9. BOARD THICKNESS TO BE MEASURED FROM SOLDER PAD TO SOLDER PAD.
10. SEE [www.samtec.com/processing/edgemt\\_tectalk/index.htm](http://www.samtec.com/processing/edgemt_tectalk/index.htm) FOR PROCESSING EDGE MOUNT PARTS TO BOARD.
11. EM3 IS NOT A STANDARD OFFERING; AVAILABLE AS AN ASP ONLY. PLEASE CONTACT SAMTEC INTERCONNECT PROCESSING GROUP WITH ORDER INQUIRIES
12. FOR NEW APPLICATIONS REQUIRING THESE POSITIONS, PLEASE CONTACT SAMTEC INTERCONNECT PROCESSING GROUP.
13. ANY CHANGES SHOULD ALSO BE APPLIED TO QTH, QTE, QTS, BTH, BTE, AND BTS.
14. ORDERS WILL BE PACKAGED ACCORDING TO THE SAMTEC PACKAGING EFFICIENCY STANDARDS (SPES) FOUND ON [WWW.SAMTEC.COM](http://WWW.SAMTEC.COM)

UNLESS OTHERWISE SPECIFIED,  
DIMENSIONS ARE IN INCHES.

TOLERANCES ARE:

## DECIMALS

$$.XX: \pm .01 [.3]$$

.XXX:  $\pm .005[.13]$

.XXXX:  $\pm .0020[.051]$ 

PROPRIETARY NOTE

THIS DOCUMENT CONTAINS INFORMATION  
CONFIDENTIAL AND PROPRIETARY TO  
SAMTEC, INC. AND SHALL NOT BE REPRODUCED  
OR TRANSFERRED TO OTHER DOCUMENTS OR  
DISCLOSED TO OTHERS OR USED FOR ANY  
PURPOSE OTHER THAN THAT WHICH IT WAS  
OBTAINED WITHOUT THE EXPRESSED WRITTEN  
CONSENT OF SAMTEC, INC.

**MATERIAL:** DO NOT SCALE DRAWING

SHEET SCALE: 1.5:1

INSULATOR: LCP, COLOR: BLACK  
TERMINAL & GROUND PLANE: PHOS BRONZE

DESCRIPTION:  
.5mm HS DIFF PAIR EDGE MOUNT TERMINAL ASSEMBLY

DWG. NO.

QTH-XXX-01-X-D-DP-EMX

BY: DEAN P 12-12-2001 SHEET 1 OF 1

c:\enterprisevault\DWG\MISC\MKTG\QTH-XXX-01-X-D-DP-EMX-MKT.SLDDRW