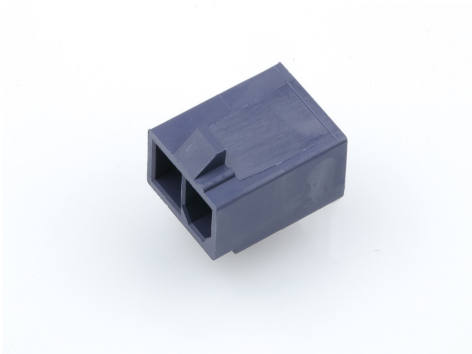




**Part Number :** [1726480102](#)  
**Product Description :** Mini-Fit Jr. Header,  
Single Row, Right-Angle, with Snap-in Plastic  
Peg PCB Lock, 2 Circuits, Nylon, 94V-2, Matte  
Tin (Sn) Plating, Glow-Wire Capable  
**Series Number :** 172648  
**Status :** Active  
**Product Category :** PCB Headers and  
Receptacles



## Documents & Resources


**Drawings**  
[1726480102\\_sd.pdf](#)  
[PK-5569-005-001.pdf](#)

**3D Models and Design Files**  
[1726480102\\_stp.zip](#)

**Specifications**  
[PS-45750-001-001.pdf](#)  
[PS-5556-001-001.pdf](#)  
[55560001-TS-000.pdf](#)  
[TS-5556-002-001.pdf](#)

## Product Environment Compliance

### Compliance

GADSL/IMDS	Compliant with Exemption 44; 33
China RoHS	
EU ELV	Not Relevant
Low-Halogen Status	Not Low-Halogen per IEC 61249-2-21
REACH SVHC	Not Contained per D(2024)4144-DC (27 June 2024)
EU RoHS	Compliant per EU 2015/863

Multiple Part Product Compliance Statements  
- Eu RoHS  
- REACH SVHC

- Low-Halogen

#### Multiple Part Industry Compliance Documents

- IPC 1752A Class C
- IPC 1752A Class D
- Molex Product Compliance Declaration
- IEC-62474
- chemSHERPA (xml)

#### EU RoHS Certificate of Compliance

---

## Part Details

### General

Status	Active
Category	PCB Headers and Receptacles
Series	172648
Description	Mini-Fit Jr. Header, Single Row, Right-Angle, with Snap-in Plastic Peg PCB Lock, 2 Circuits, Nylon, 94V-2, Matte Tin (Sn) Plating, Glow-Wire Capable
Application	Power, Wire-to-Board
Component Type	PCB Header
Product Name	Mini-Fit Jr.
UPC	889056720014

### Agency

CSA	LR19980
UL	E29179

### Electrical

Current - Maximum per Contact	12.5A
Voltage - Maximum	600V AC (RMS)/DC

### Physical

Breakaway	No
Circuits (Loaded)	2
Circuits (maximum)	2
Color - Resin	Black

Durability (mating cycles max)	30
First Mate / Last Break	No
Flammability	94V-2
Glow-Wire Capable	Yes
Guide to Mating Part	No
Keying to Mating Part	None
Lock to Mating Part	Yes
Material - Metal	Brass
Material - Plating Mating	Matte Tin
Material - Plating Termination	Matte Tin
Material - Resin	Nylon
Net Weight	1.012/g
Number of Rows	1
Orientation	Right Angle
Packaging Type	Tray
PC Tail Length	3.50mm
PCB Locator	Yes
PCB Retention	Yes
PCB Thickness - Recommended	1.78mm
Pitch - Mating Interface	4.20mm
Pitch - Termination Interface	4.20mm
Plating min - Mating	2.540μm
Plating min - Termination	2.540μm
Polarized to Mating Part	Yes
Polarized to PCB	Yes
Shrouded	Fully
Stackable	No
Temperature Range - Operating	-40° to +105°C
Termination Interface Style	Through Hole

## Solder Process Data

Max-Duration	5
Lead-Free Process Capability	WAVE
Max-Cycle	1
Max-Temp	220

---

# Mates With / Use With

## Mates with Part(s)

Description	Part Number
Mini-Fit Sigma Receptacle Housing, 4.20mm Pitch, Single Row, Glow-Wire Capable, 2 Circuits	<u>2004531002</u>
Mini-Fit Jr. Receptacle Housing, Single Row, PA Polyamide Nylon 6/6, UL94V-2, 2 Circuits, Positive Latch, Glow-Wire Capable, Black	<u>469940212</u>