

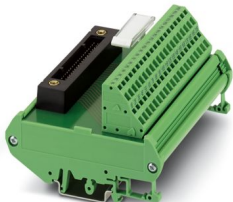
# FLKM-KS40/YCS/ZFKDS - Passive module



2314723

<https://www.phoenixcontact.com/us/products/2314723>

Please be informed that the data shown in this PDF document is generated from our online catalog. Please find the complete data in the user documentation. Our general terms of use for downloads are valid.



Universal interface module with 1:1 connection between 40-pos. system connection and spring-cage terminal block connection.

## Commercial data

Item number	2314723
Packing unit	1 pc
Minimum order quantity	1 pc
Note	Made to order (non-returnable)
Product key	CK218N
GTIN	4046356155007
Weight per piece (including packing)	211.2 g
Weight per piece (excluding packing)	211.2 g
Country of origin	DE

# FLKM-KS40/YCS/ZFKDS - Passive module



2314723

<https://www.phoenixcontact.com/us/products/2314723>

## Technical data

### Product properties

Product type	Interface module
No. of channels	8
	16
Operating mode	100% operating factor

### Insulation characteristics

Insulation	Functional insulation
------------	-----------------------

### Insulation characteristics: Air clearances and creepage distances

Insulation	Functional insulation
Overvoltage category	II
Pollution degree	2

### Electrical properties

Operating voltage (AC)	$\leq 30$ V AC
Operating voltage (DC)	$\leq 30$ V DC
Current (per branch)	$\leq 1$ A

### Air clearances and creepage distances

Rated insulation voltage	50 V
Rated surge voltage	0.5 kV (1.2/50 $\mu$ s)

### Supported controller YOKOGAWA CS3000 CentumVP

Suitable I/O card	AAB841
	AAI135
	AAI141
	AAI143
	AAI543
	AAI835
	AAI841
	AAR181
	AAT141
	AAV141
	AAV142
	AAV542
	AAP135

### Supported controller YOKOGAWA STARDOM

Suitable I/O card	NFAI141
	NFAI43
	NFAI543
	NFAI135

# FLKM-KS40/YCS/ZFKDS - Passive module



2314723

<https://www.phoenixcontact.com/us/products/2314723>

	NFAP135
	NFAV141
	NFAV142
	NFAV542
	NFAB841
	NFAI841
	NFAI835

## Connection data

### Connection 1 (control level)

Connection method	Yokogawa KS-compatible
Number of connections	1
Number of positions	40
Tightening torque	0.5 Nm
Pitch	2.54 mm

### Connection 2 (field level)

Connection method	Spring-cage connection
Stripping length	7.5 mm
Number of positions	40
Conductor cross section rigid	0.2 mm <sup>2</sup> ... 2.5 mm <sup>2</sup>
Conductor cross section flexible	0.2 mm <sup>2</sup> ... 1.5 mm <sup>2</sup>
	0.25 mm <sup>2</sup> ... 1.5 mm <sup>2</sup> (Ferrule without plastic sleeve)
	0.25 mm <sup>2</sup> ... 1.5 mm <sup>2</sup> (Ferrule with plastic sleeve)
Conductor cross section AWG	24 ... 14
Pitch	5.08 mm

## Signaling

Status display present	No
------------------------	----

## Dimensions

### Item dimensions

Width	112 mm
Height	89.6 mm
Depth	59.7 mm

## Environmental and real-life conditions

### Ambient conditions

Degree of protection (Module)	IP00
Degree of protection (Installation location)	≤ IP54
Ambient temperature (operation)	-20 °C ... 50 °C
Ambient temperature (storage/transport)	-20 °C ... 70 °C
Altitude	≤ 2000 m

# FLKM-KS40/YCS/ZFKDS - Passive module



2314723

<https://www.phoenixcontact.com/us/products/2314723>

## Approvals

### UKCA

Certificate	UKCA-compliant
-------------	----------------

## Standards and regulations

### Air clearances and creepage distances

Standards/regulations	EN IEC 60664-1
-----------------------	----------------

## Mounting

Mounting type	DIN rail mounting
Mounting position	any

## Notes

Notes on operation	For proper use, the specifications of the installation directive (see Downloads) must be observed. For applications or use with third-party products, the specifications, and the safety and warning instructions of the respective third-party manufacturer must also be met.
--------------------	--

FLKM-KS40/YCS/ZFKDS - Passive module

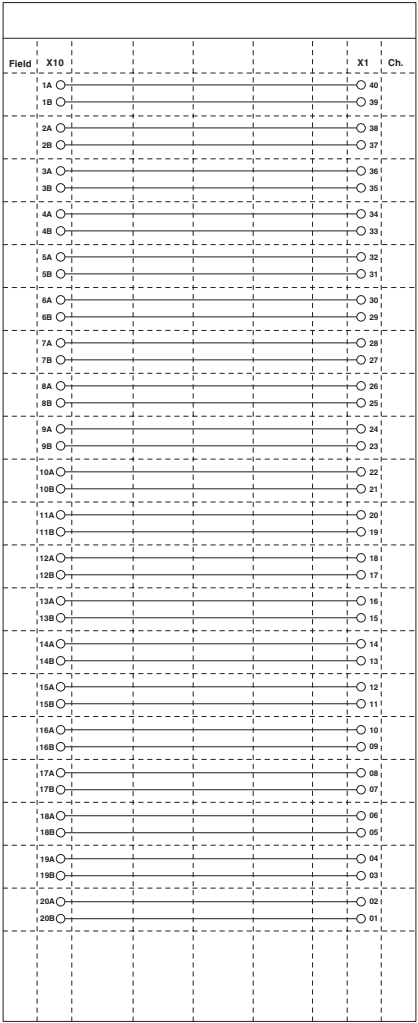
2314723

<https://www.phoenixcontact.com/us/products/2314723>



Drawings

Circuit diagram



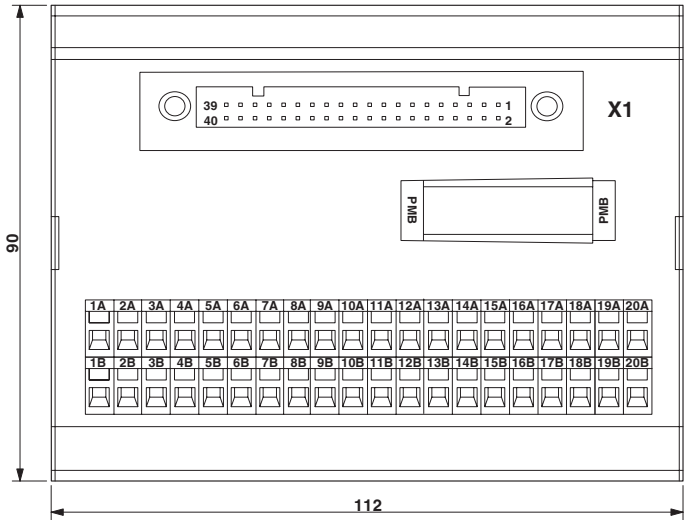
# FLKM-KS40/YCS/ZFKDS - Passive module

2314723

<https://www.phoenixcontact.com/us/products/2314723>



Dimensional drawing



# FLKM-KS40/YCS/ZFKDS - Passive module



2314723

<https://www.phoenixcontact.com/us/products/2314723>

## Classifications

### ECLASS

ECLASS-11.0	27141152
ECLASS-12.0	27141152
ECLASS-13.0	27141152

### ETIM

ETIM 9.0	EC002780
----------	----------

### UNSPSC

UNSPSC 21.0	39121400
-------------	----------

# FLKM-KS40/YCS/ZFKDS - Passive module



2314723

<https://www.phoenixcontact.com/us/products/2314723>

## Environmental product compliance

EU RoHS	
Fulfills EU RoHS substance requirements	Yes, No exemptions
China RoHS	
Environment friendly use period (EFUP)	EFUP-E
	No hazardous substances above the limits
EU REACH SVHC	
REACH candidate substance (CAS No.)	No substance above 0.1 wt%



# FLKM-KS40/YCS/ZFKDS - Passive module



2314723

<https://www.phoenixcontact.com/us/products/2314723>

## Accessories

### FLK 40-PA/EZ-DR/KS/ 100/YUC - Front adapter

2322786

<https://www.phoenixcontact.com/us/products/2322786>



Cast front adapter with attached round cable and a 40-pos. socket strip injection-molded on both sides for the connection of Yokogawa controllers. Cable length: 1.0 m

---

### FLK 40-PA/EZ-DR/KS/ 200/YUC - Front adapter

2314341

<https://www.phoenixcontact.com/us/products/2314341>



Cast front adapter with attached round cable and a 40-pos. socket strip injection-molded on both sides for the connection of Yokogawa controllers. Cable length: 2.0 m

# FLKM-KS40/YCS/ZFKDS - Passive module



2314723

<https://www.phoenixcontact.com/us/products/2314723>

## FLK 40-PA/EZ-DR/KS/ 300/YUC - Front adapter

2314354

<https://www.phoenixcontact.com/us/products/2314354>



Cast front adapter with attached round cable and a 40-pos. socket strip injection-molded on both sides for the connection of Yokogawa controllers. Cable length: 3.0 m

---

## FLK 40-PA/EZ-DR/KS/ 400/YUC - Front adapter

2314367

<https://www.phoenixcontact.com/us/products/2314367>



Cast front adapter with attached round cable and a 40-pos. socket strip injection-molded on both sides for the connection of Yokogawa controllers. Cable length: 4.0 m

# FLKM-KS40/YCS/ZFKDS - Passive module



2314723

<https://www.phoenixcontact.com/us/products/2314723>

## FLK 40-PA/EZ-DR/KS/ 500/YUC - Front adapter

2321570

<https://www.phoenixcontact.com/us/products/2321570>



Cast front adapter with attached round cable and a 40-pos. socket strip injection-molded on both sides for the connection of Yokogawa controllers. Cable length: 5.0 m

---

## FLK 40-PA/EZ-DR/KS/ 600/YUC - Front adapter

2314943

<https://www.phoenixcontact.com/us/products/2314943>



Cast front adapter with attached round cable and a 40-pos. socket strip injection-molded on both sides for the connection of Yokogawa controllers. Cable length: 6.0 m

# FLKM-KS40/YCS/ZFKDS - Passive module



2314723

<https://www.phoenixcontact.com/us/products/2314723>

## FLK 40-PA/EZ-DR/KS/ 700/YUC - Front adapter

2321583

<https://www.phoenixcontact.com/us/products/2321583>



Cast front adapter with attached round cable and a 40-pos. socket strip injection-molded on both sides for the connection of Yokogawa controllers. Cable length: 7.0 m

---

## FLK 40-PA/EZ-DR/KS/ 800/YUC - Front adapter

2314956

<https://www.phoenixcontact.com/us/products/2314956>



Cast front adapter with attached round cable and a 40-pos. socket strip injection-molded on both sides for the connection of Yokogawa controllers. Cable length: 8.0 m

# FLKM-KS40/YCS/ZFKDS - Passive module



2314723

<https://www.phoenixcontact.com/us/products/2314723>

## FLK 40-PA/EZ-DR/KS/ 900/YUC - Front adapter

2321415

<https://www.phoenixcontact.com/us/products/2321415>



Cast front adapter with attached round cable and a 40-pos. socket strip injection-molded on both sides for the connection of Yokogawa controllers. Cable length: 9.0 m

---

## FLK 40-PA/EZ-DR/KS/1000/YUC - Front adapter

2314370

<https://www.phoenixcontact.com/us/products/2314370>



Cast front adapter with attached round cable and a 40-pos. socket strip injection-molded on both sides for the connection of Yokogawa controllers. Cable length: 10.0 m

# FLKM-KS40/YCS/ZFKDS - Passive module



2314723

<https://www.phoenixcontact.com/us/products/2314723>

## FLK 40-PA/EZ-DR/KS/1100/YUC - Front adapter

2321428

<https://www.phoenixcontact.com/us/products/2321428>



Cast front adapter with attached round cable and a 40-pos. socket strip injection-molded on both sides for the connection of Yokogawa controllers. Cable length: 11.0 m

---

## FLK 40-PA/EZ-DR/KS/1200/YUC - Front adapter

2321431

<https://www.phoenixcontact.com/us/products/2321431>



Cast front adapter with attached round cable and a 40-pos. socket strip injection-molded on both sides for the connection of Yokogawa controllers. Cable length: 12.0 m

# FLKM-KS40/YCS/ZFKDS - Passive module



2314723

<https://www.phoenixcontact.com/us/products/2314723>

## FLK 40-PA/EZ-DR/KS/1300/YUC - Front adapter

2321444

<https://www.phoenixcontact.com/us/products/2321444>



Cast front adapter with attached round cable and a 40-pos. socket strip injection-molded on both sides for the connection of Yokogawa controllers. Cable length: 13.0 m

---

## FLK 40-PA/EZ-DR/KS/1400/YUC - Front adapter

2321457

<https://www.phoenixcontact.com/us/products/2321457>



Cast front adapter with attached round cable and a 40-pos. socket strip injection-molded on both sides for the connection of Yokogawa controllers. Cable length: 14.0 m

# FLKM-KS40/YCS/ZFKDS - Passive module



2314723

<https://www.phoenixcontact.com/us/products/2314723>

## FLK 40-PA/EZ-DR/KS/1500/YUC - Front adapter

2314383

<https://www.phoenixcontact.com/us/products/2314383>



Cast front adapter with attached round cable and a 40-pos. socket strip injection-molded on both sides for the connection of Yokogawa controllers. Cable length: 15.0 m

---

## FLK 40-PA/EZ-DR/KS/1600/YUC - Front adapter

2321596

<https://www.phoenixcontact.com/us/products/2321596>



Cast front adapter with attached round cable and a 40-pos. socket strip injection-molded on both sides for the connection of Yokogawa controllers. Cable length: 16.0 m



# FLKM-KS40/YCS/ZFKDS - Passive module



2314723

<https://www.phoenixcontact.com/us/products/2314723>

## FLK 40-PA/EZ-DR/KS/1700/YUC - Front adapter

2321606

<https://www.phoenixcontact.com/us/products/2321606>



Cast front adapter with attached round cable and a 40-pos. socket strip injection-molded on both sides for the connection of Yokogawa controllers. Cable length: 17.0 m

---

## FLK 40-PA/EZ-DR/KS/1800/YUC - Front adapter

2321619

<https://www.phoenixcontact.com/us/products/2321619>



Cast front adapter with attached round cable and a 40-pos. socket strip injection-molded on both sides for the connection of Yokogawa controllers. Cable length: 18.0 m

# FLKM-KS40/YCS/ZFKDS - Passive module



2314723

<https://www.phoenixcontact.com/us/products/2314723>

## FLK 40-PA/EZ-DR/KS/1900/YUC - Front adapter

2321622

<https://www.phoenixcontact.com/us/products/2321622>



Cast front adapter with attached round cable and a 40-pos. socket strip injection-molded on both sides for the connection of Yokogawa controllers. Cable length: 19.0 m

---

## FLK 40-PA/EZ-DR/KS/2000/YUC - Front adapter

2314532

<https://www.phoenixcontact.com/us/products/2314532>



Cast front adapter with attached round cable and a 40-pos. socket strip injection-molded on both sides for the connection of Yokogawa controllers. Cable length: 20.0 m

# FLKM-KS40/YCS/ZFKDS - Passive module



2314723

<https://www.phoenixcontact.com/us/products/2314723>

## FLK 40-PA/EZ-DR/KS/2500/YUC - Front adapter

2314545

<https://www.phoenixcontact.com/us/products/2314545>



Cast front adapter with attached round cable and a 40-pos. socket strip injection-molded on both sides for the connection of Yokogawa controllers. Cable length: 25.0 m

---

## FLK 40-PA/EZ-DR/KS/3000/YUC - Front adapter

2314558

<https://www.phoenixcontact.com/us/products/2314558>



Cast front adapter with attached round cable and a 40-pos. socket strip injection-molded on both sides for the connection of Yokogawa controllers. Cable length: 30.0 m

# FLKM-KS40/YCS/ZFKDS - Passive module



2314723

<https://www.phoenixcontact.com/us/products/2314723>

## FLK 40-PA/EZ-DR/KS/3500/YUC - Front adapter

2901017

<https://www.phoenixcontact.com/us/products/2901017>



Cast front adapter with attached round cable and a 40-pos. socket strip injection-molded on both sides for the connection of Yokogawa controllers. Cable length: 35.0 m

---

## FLK 40-PA/EZ-DR/KS/4000/YUC - Front adapter

2901052

<https://www.phoenixcontact.com/us/products/2901052>



Cast front adapter with attached round cable and a 40-pos. socket strip injection-molded on both sides for the connection of Yokogawa controllers. Cable length: 40.0 m

# FLKM-KS40/YCS/ZFKDS - Passive module



2314723

<https://www.phoenixcontact.com/us/products/2314723>

## FLK 40-PA/EZ-DR/KS/4500/YUC - Front adapter

2902912

<https://www.phoenixcontact.com/us/products/2902912>



Cast front adapter with attached round cable and a 40-pos. socket strip injection-molded on both sides for the connection of Yokogawa controllers. Cable length: 45.0 m

---

## FLK 40-PA/EZ-DR/HF/KS/ 100/YUC - Front adapter

2904747

<https://www.phoenixcontact.com/us/products/2904747>



Cast front adapter with attached, halogen-free round cable and a 40-pos. socket strip injection-molded on both sides for the connection of Yokogawa controllers. Cable length: 1.0 m

# FLKM-KS40/YCS/ZFKDS - Passive module



2314723

<https://www.phoenixcontact.com/us/products/2314723>

## FLK 40-PA/EZ-DR/HF/KS/ 200/YUC - Front adapter

2904748

<https://www.phoenixcontact.com/us/products/2904748>



Cast front adapter with attached, halogen-free round cable and a 40-pos. socket strip injection-molded on both sides for the connection of Yokogawa controllers. Cable length: 2.0 m

---

## FLK 40-PA/EZ-DR/HF/KS/ 300/YUC - Front adapter

2904749

<https://www.phoenixcontact.com/us/products/2904749>



Cast front adapter with attached, halogen-free round cable and a 40-pos. socket strip injection-molded on both sides for the connection of Yokogawa controllers. Cable length: 3.0 m

# FLKM-KS40/YCS/ZFKDS - Passive module



2314723

<https://www.phoenixcontact.com/us/products/2314723>

## FLK 40-PA/EZ-DR/HF/KS/ 400/YUC - Front adapter

2904750

<https://www.phoenixcontact.com/us/products/2904750>



Cast front adapter with attached, halogen-free round cable and a 40-pos. socket strip injection-molded on both sides for the connection of Yokogawa controllers. Cable length: 4.0 m

---

## FLK 40-PA/EZ-DR/HF/KS/ 500/YUC - Front adapter

2904645

<https://www.phoenixcontact.com/us/products/2904645>



Cast front adapter with attached, halogen-free round cable and a 40-pos. socket strip injection-molded on both sides for the connection of Yokogawa controllers. Cable length: 5.0 m

# FLKM-KS40/YCS/ZFKDS - Passive module



2314723

<https://www.phoenixcontact.com/us/products/2314723>

## FLK 40-PA/EZ-DR/HF/KS/ 600/YUC - Front adapter

2904751

<https://www.phoenixcontact.com/us/products/2904751>



Cast front adapter with attached, halogen-free round cable and a 40-pos. socket strip injection-molded on both sides for the connection of Yokogawa controllers. Cable length: 6 m

---

## FLK 40-PA/EZ-DR/HF/KS/ 700/YUC - Front adapter

2904752

<https://www.phoenixcontact.com/us/products/2904752>



Cast front adapter with attached, halogen-free round cable and a 40-pos. socket strip injection-molded on both sides for the connection of Yokogawa controllers. Cable length: 7.0 m



# FLKM-KS40/YCS/ZFKDS - Passive module



2314723

<https://www.phoenixcontact.com/us/products/2314723>

## FLK 40-PA/EZ-DR/HF/KS/ 800/YUC - Front adapter

2904753

<https://www.phoenixcontact.com/us/products/2904753>



Cast front adapter with attached, halogen-free round cable and a 40-pos. socket strip injection-molded on both sides for the connection of Yokogawa controllers. Cable length: 8.0 m

---

## FLK 40-PA/EZ-DR/HF/KS/ 900/YUC - Front adapter

2904754

<https://www.phoenixcontact.com/us/products/2904754>



Cast front adapter with attached, halogen-free round cable and a 40-pos. socket strip injection-molded on both sides for the connection of Yokogawa controllers. Cable length: 9.0 m

# FLKM-KS40/YCS/ZFKDS - Passive module



2314723

<https://www.phoenixcontact.com/us/products/2314723>

## FLK 40-PA/EZ-DR/HF/KS/1000/YUC - Front adapter

2904646

<https://www.phoenixcontact.com/us/products/2904646>



Cast front adapter with attached, halogen-free round cable and a 40-pos. socket strip injection-molded on both sides for the connection of Yokogawa controllers. Cable length: 10.0 m

---

## FLK 40-PA/EZ-DR/HF/KS/1500/YUC - Front adapter

2904647

<https://www.phoenixcontact.com/us/products/2904647>



Cast front adapter with attached, halogen-free round cable and a 40-pos. socket strip injection-molded on both sides for the connection of Yokogawa controllers. Cable length: 15.0 m

# FLKM-KS40/YCS/ZFKDS - Passive module



2314723

<https://www.phoenixcontact.com/us/products/2314723>

## FLK 40-PA/EZ-DR/HF/KS/2000/YUC - Front adapter

2904488

<https://www.phoenixcontact.com/us/products/2904488>



Cast front adapter with attached, halogen-free round cable and a 40-pos. socket strip injection-molded on both sides for the connection of Yokogawa controllers. Cable length: 20.0 m

---

## FLK 40-PA/EZ-DR/HF/KS/2500/YUC - Front adapter

2904648

<https://www.phoenixcontact.com/us/products/2904648>



Cast front adapter with attached, halogen-free round cable and a 40-pos. socket strip injection-molded on both sides for the connection of Yokogawa controllers. Cable length: 25.0 m

# FLKM-KS40/YCS/ZFKDS - Passive module



2314723

<https://www.phoenixcontact.com/us/products/2314723>

## FLK 40-PA/EZ-DR/HF/KS/3000/YUC - Front adapter

2904649

<https://www.phoenixcontact.com/us/products/2904649>



Cast front adapter with attached, halogen-free round cable and a 40-pos. socket strip injection-molded on both sides for the connection of Yokogawa controllers. Cable length: 30.0 m

---

## FLK 40-PA/EZ-DR/HF/KS/3500/YUC - Front adapter

2904650

<https://www.phoenixcontact.com/us/products/2904650>



Cast front adapter with attached, halogen-free round cable and a 40-pos. socket strip injection-molded on both sides for the connection of Yokogawa controllers. Cable length: 35.0 m

# FLKM-KS40/YCS/ZFKDS - Passive module



2314723

<https://www.phoenixcontact.com/us/products/2314723>

## FLK 40-PA/EZ-DR/HF/KS/5000/YUC - Front adapter

2904653

<https://www.phoenixcontact.com/us/products/2904653>



Cast front adapter with attached, halogen-free round cable and a 40-pos. socket strip injection-molded on both sides for the connection of Yokogawa controllers. Cable length: 50.0 m

---

Phoenix Contact 2024 © - all rights reserved

<https://www.phoenixcontact.com>

Phoenix Contact USA  
586 Fulling Mill Road  
Middletown, PA 17057, United States  
(+717) 944-1300  
[info@phoenixcon.com](mailto:info@phoenixcon.com)