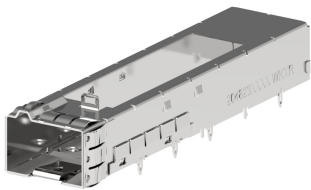




**Part Number :** 2048234000  
**Product Description :** SFP-DD 1-by-1 Cage Assembly with Spring Fingers, Open Top, Two Rear Legs, with Press-Fit Pins  
**Series Number :** 204823  
**Status :** Obsolete  
**Product Category :** High-Speed EMI Cages



Documents & Resources

Product Environment Compliance

Compliance

GADSL/IMDS	Not Relevant
China RoHS	
EU ELV	Compliant per 2000/53/EC
Low-Halogen Status	Low-Halogen per IEC 61249-2-21
REACH SVHC	Not Contained per D(2024)4144-DC (27 June 2024)
EU RoHS	Compliant per EU 2015/863

Multiple Part Product Compliance Statements

- Eu RoHS
- REACH SVHC
- Low-Halogen

Multiple Part Industry Compliance Documents

- IPC 1752A Class C
- IPC 1752A Class D
- Molex Product Compliance Declaration
- IEC-62474
- chemSHERPA (xml)

EU RoHS Certificate of Compliance

Part Details

General

Status	Obsolete
--------	----------

Category	High-Speed EMI Cages
Series	204823
Description	SFP-DD 1-by-1 Cage Assembly with Spring Fingers, Open Top, Two Rear Legs, with Press-Fit Pins
Application	Module-to-Board
Component Type	Cage Assembly
Product Family	SFP-DD (Double Density) System
Product Name	SFP-DD
UPC	191130501632

Electrical

Data Rate	56.0 Gbps
-----------	-----------

Physical

EMI Panel / Bezel Mount	Spring Fingers
Light Pipes per Port	0
Material - Metal	Stainless Steel
Net Weight	5.160/g
Orientation	Horizontal
Packaging Type	Tray
Port Configuration	1x1
Rear Legs	2
Termination Interface Style	Through Hole - Compliant Pin
Thermal Height	N/A
Thermal Solutions	Open Top