



High Power Density Constant Current LED Drivers with 0-10 V Dimming

Input Voltage	Max. Output Power	Output Voltage	Output Current	Efficiency	Max. Case Temperature	THD	Power Factor	Dimming Method	Dimming Range
120 & 277 Vac nominal	72 W	20 to 82 Vdc	700 mA to 2.4 A CC	≥ 90% typical	90°C (measured at hot spot)	< 20%	> 0.9	0-10 V	10 - 100% (% of Iout)

CC: Constant Current

PRODUCT DESCRIPTION

The ERM050/060 series of LED drivers is ideally suited for new commercial, office, industrial and outdoor LED lighting applications. These extremely compact and efficient devices feature flicker-free dimming using a 0-10 V control signal, universal AC input with power factor correction, and worldwide safety approvals

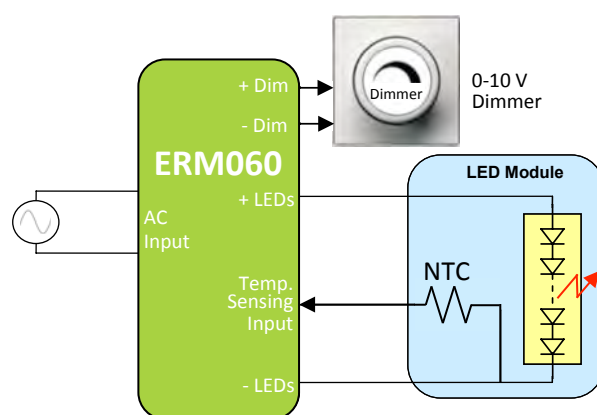
FEATURES

- Very high efficiency of ≥ 90% and high power density of 8.2W/in³
- Compatible with 0-10 V dimmers
- 120 and 277 Vac nominal input voltage
- Protections: output open load, over-current and short-circuit (hiccup), and over-temperature with auto recovery
- Conducted and radiated EMI: FCC CFR Title 47 Part 15 compliant with Class B at 120 Vac and Class A at 277 Vac
- Enables ENERGY STAR® and DLC (DesignLight Consortium®) luminaire compliance
- IP64-rated metal case with silicone-based potting
- 90°C maximum case hot spot temperature
- 50,000 hours lifetime
- Class 2 power supply
- Double-insulated power supply between input and output (class II)
- Worldwide safety approvals



APPLICATIONS

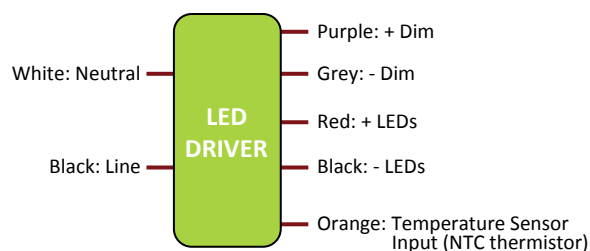
- High Bay Lights
- Troffers
- Outdoor LED Lighting
- Office LED Lighting
- Industrial LED Lighting



APPLICATION DIAGRAM



METAL CASE:
L 81.5 x W 56.2 x H 31.5 mm
(L 3.21 x W 2.21 x H 1.24 in)



WIRING DIAGRAM



ENERGY RECOVERY PRODUCTS™

**ERM050** 40-50 W
ERM060 51-70 W

High Power Density Constant Current LED Drivers with 0-10 V Dimming

1 - INPUT SPECIFICATION (@25°C ambient temperature)

	Units	Minimum	Typical	Maximum	Notes
Input Voltage Range (Vin)	Vac	90 240	120 277	132 305	
Input Frequency Range	Hz	57	60	63	
Power Factor (PF)		0.9	> 0.9		At nominal input voltage and nominal LED load (nominal Vout)
Input Current	A	-	-	0.8 A @ 120 Vac 0.4 A @ 277 Vac	
Inrush Current	A			50 A peak	At any point on the sine wave and 25°C
Leakage Current	µA			250 µA @ 120 Vac 600 µA @ 277 Vac	Measured per IEC60950-1
Input Harmonics	Complies with IEC61000-3-2 for Class C equipment				
Total Harmonics Distortion (THD)				20%	•At nominal input voltage and nominal LED load (nominal Vout) •Complies with DLC (DesignLight Consortium) technical requirements v2.0
Efficiency		-	90%	-	At nominal input voltage
Isolation	Meets UL60950-1 for class II reinforced/double insulation power supply				

2 - OUTPUT SPECIFICATION (@25°C ambient temperature)

	Units	Minimum	Typical	Maximum	Notes
Output Voltage (Vout)	Vdc	21		82.0	See ordering information for details
Output Current (Iout)	mA	700		2400	See ordering information for details
Output Current Regulation	%	-5	±2.5	5	Includes AC line voltage, load, and current set point variations
Output Current Overshoot	%	-	-	10	The driver does not operate outside of the regulation requirements for more than 500 ms during power on with nominal LED load (nominal Vout).
Ripple Current	< 22.5% peak-to-peak of rated output current				•At nominal input voltage, nominal LED load (nominal Vout) and with no dimming •Models with an output voltage greater than 60 V may have ripple currents up to 30% peak to peak of the rated current, depending on the LED load. •Calculated in accordance with the IES Lighting Handbook, 9th edition.
Dimming Range (% of Iout)		10%		100%	The dimming range will be dependent on each specific dimmer.
Start-up Time	ms			500	The output current is within the regulation band, within 500 ms of AC power being applied, without dimmer attached and at nominal input voltage and nominal load (nominal Vout).
				1500	The output current is within the regulation band, within 1500 ms of AC power being applied, with 10% dimming attached and at nominal input voltage and nominal load (nominal Vout).

Output Controls

+Dim, -Dim	A dimming input can be used to adjust the output setting via a standard commercial wall dimmer, an external control voltage source (0 to 10 Vdc), or a variable resistor when using the recommended number of LEDs. The dimming input permits 10% to 100% dimming. The voltage on the +Dim input must be ≤ 10V.
Temperature Sensing Input	The temperature sensing input pin may be connected to a 100 kΩ NTC (negative temperature coefficient) thermistor. The thermistor should be located on the LED assembly to monitor its temperature. If the temperature exceeds a predetermined (80°C) set point, the output current of the LED driver module is automatically reduced to regulate the temperature of the LED at a safe level.



ENERGY RECOVERY PRODUCTS™

**ERM050** 40-50 W
ERM060 51-70 W

High Power Density Constant Current LED Drivers with 0-10 V Dimming

3 - PROTECTION FEATURES

Output Open Load, Over-Current and Short-Circuit Protection (hiccup), and Over-Temperature Protection with Auto Recovery

4 - ENVIRONMENTAL CONDITIONS

	Units	Minimum	Typical	Maximum	Notes
Operating Case Temperature (Tc)	°C	-30		+90	Case temperature measured at the hot spot •tc on label (see label in page 8)
Storage Temperature	°C	-40		+85	
Humidity	%	5	-	95	Non-condensing
Cooling		Convection cooled			
Acoustic Noise	dBA			24	Measured at a distance of 1 meter, without and with approved dimmers
Mechanical Shock Protection	per EN60068-2-27				
Vibration Protection	per EN60068-2-6 & EN60068-2-64				
MTBF	> 250,000 hours when operated at nominal input and output conditions, and at Tc ≤ 70°C				
Lifetime	50,000 hours at 70°C maximum case hot spot temperature (see hot spot •tc on label in page 8)				

5 - EMC COMPLIANCE AND SAFETY APPROVALS

EMC Compliance			
Conducted and Radiated EMI		FCC CFR Title 47 Part 15 Class B at 120 Vac and Class A at 277 Vac	
Harmonic Current Emissions		IEC61000-3-2	For Class C equipment
Voltage Fluctuations & Flicker		IEC61000-3-3	
Immunity Compliance	ESD (Electrostatic Discharge)	IEC61000-4-2	6 kV contact discharge, 8 kV air discharge, level 3
	RF Electromagnetic Field Susceptibility	IEC61000-4-3	3 V/m, 80-1000 MHz, 80% modulated at distance of 3 meters
	Electrical Fast Transient	IEC61000-4-4	± 2 kV on AC power port for 1 minute, ±1 kV on signal/control lines
	Surge	IEC61000-4-5	± 1 kV line to line (differential mode) / ± 2 kV line to common mode ground (tested to secondary ground) on AC power port, ±0.5 kV for outdoor cables
	Conducted RF Disturbances	IEC61000-4-6	3 V, 0.15-80 MHz, 80% modulated
	Voltage Dips	IEC61000-4-11	>95% dip, 0.5 period; 30% dip, 25 periods; 95% reduction, 250 periods
Transient Protection	Ring Wave		ANSI/IEEE c62.41.1-2002 & c62.41.2-2002 category A, 2.5 kV ring wave
Safety Agency Approvals			
UL	UL60950-1 recognized	UL8750 recognized	Approved for damp locations
cUL	CSA C22.2 60950-1		

Safety					
	Units	Minimum	Typical	Maximum	Notes
Hi Pot (High Potential)	Vdc	4242			•Insulation between the input (AC line and Neutral) and the output •Tested at the RMS voltage equivalent of 3000 Vac



High Power Density Constant Current LED Drivers with 0-10 V Dimming

6 - TEMPERATURE SENSING

Figure 1 shows the connection of a simple NTC resistor connected to the temperature sense input of the ERM050/060 LED driver. For best performance, the NTC resistor should be located close to the LED. With this configuration, a degree of over temperature protection of the LED is possible.

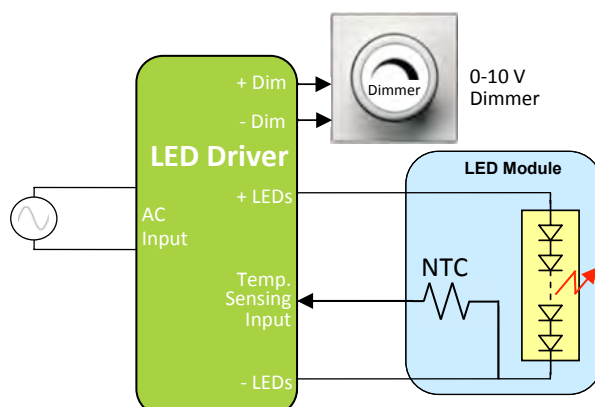


Figure 1

The ERM050/060 LED driver has been designed to operate with a 100 kΩ NTC resistor to provide a knee in the output current regulation at approximately 80°C. The graph in Figure 2 shows the reduction in output current as the temperature of the NTC rises above 80°C. For this example, the NTC is a surface-mount 100 kΩ device from Vishay, part number NTC50805E3104JXT. Alternatively, Vishay offers a similar NTC resistor (Vishay part number NTCALUG02A104H) that is in a ring lug for use in non-SMD applications.

At temperatures less than 80°C, the temperature sense input has no effect on the driver's output current. As the temperature rises above 80°C, the output current of the driver begins to drop resulting in a reduction in the temperature at the LED. Many factors, predominately the thermal impedance of the LED heatsink, play a role in determining the ultimate thermal equalization.

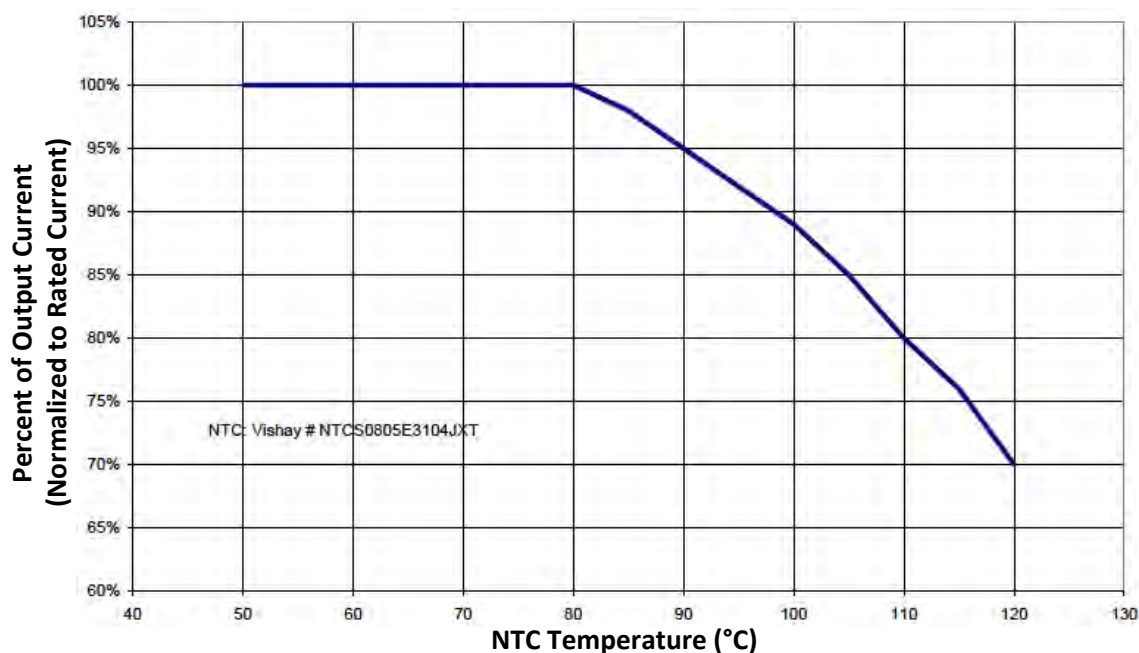


Figure 2



ENERGY RECOVERY PRODUCTS™



ERM050 40-50 W
ERM060 51-70 W

High Power Density Constant Current LED Drivers with 0-10 V Dimming

7 - OUTPUT DIMMING CONTROL

The ERM drivers operate only with 0-10V dimmers that sink current. They are not designed to operate with 0-10V control systems that source current, as used in theatrical/entertainment systems. Developed in the 1980's, the 0-10V sinking current control method is adopted by the International Electrotechnical Commission (IEC) as apart of their IEC Standard 60929 Annex E. The method to dim the output current of the driver is done via the +Dim/-Dim Signal pins. The +Dim/-Dim Signal pins respond to a 0 to 10 V signal, delivering 10% to 100% of the output current based on rated current for each model. A pull-up resistor is included internal to the driver. When the +Dim input (purple) is short circuited to the -Dim wire (grey) or to the -LED wire (black), the output current is programmed to $\leq 5\%$ of rated current. If the +Dim input is open circuited, the output current is programmed to 100% of rated current.

The voltage on the +Dim input must be $\leq 10V$. When not used, the -Dim wire (grey) and to the +Dim wire (purple) can be capped or cut off. In this configuration, no dimming is possible and the driver delivers 100% of its rated output current.

A fixed or variable resistor can be also used from the dimming input to the return to adjust the output current. Figure 3 show the relationship of the output current to a resistor connected across the 0-10V dimming input.

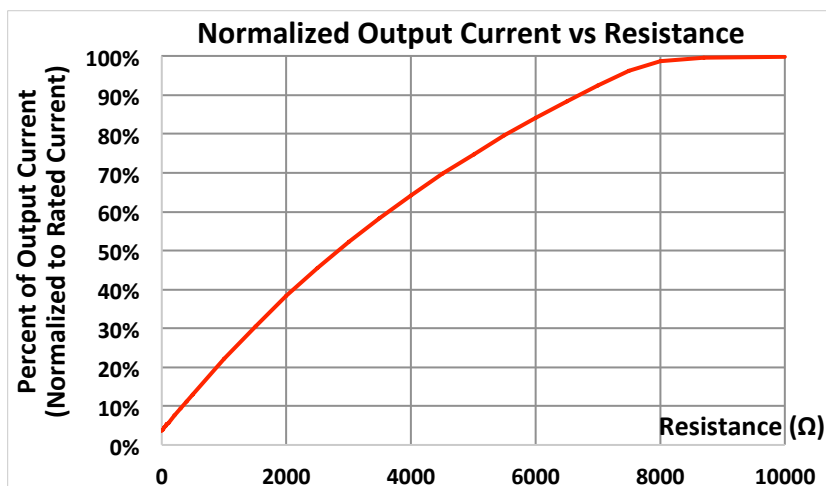


Figure 3

The maximum current supplied by the +Dim Signal pin is ≤ 2.5 mA. Figure 4 shows the relationship of the output current to the dimming input voltage.

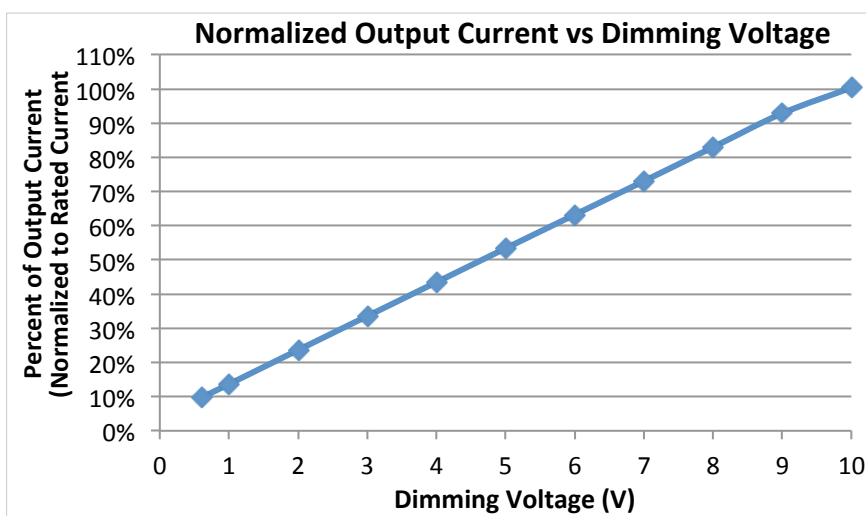


Figure 4

8 - COMPATIBLE 0-10V DIMMERS

- Lutron, Nova series (part number NFTV)
- Lutron, Diva series (part number DVTV)



High Power Density Constant Current LED Drivers with 0-10 V Dimming

9 - MECHANICAL DETAILS

Packaging Options: Partially Encapsulated with metal body enclosure

I/O Connections: Flying leads, 18 AWG on power leads, 22 AWG on control leads, 203 mm (8 in) long, 105°C rated, stranded, stripped by approximately 9.5mm and tinned. All the wires, on both input and output, have a 300 V insulation rating.

Ingress Protection: IP64 rated

10 - OUTLINE DRAWINGS

Dimensions: L 81.5 x W 56.2 x H 31.5 mm (3.21 x 2.21 x 1.24 in)

Volume: 144.3 cm³ (8.8 in³)

Weight: 280 g (9.88 oz)

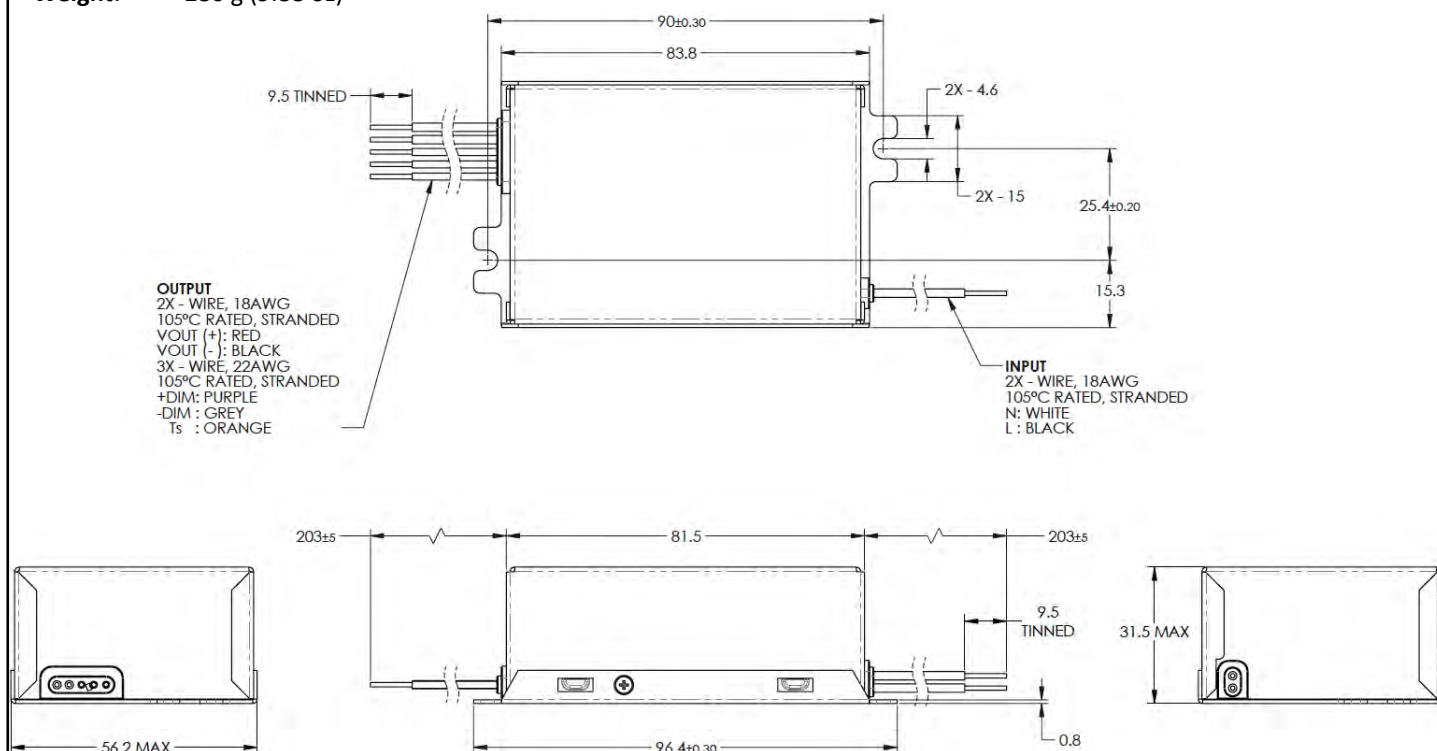


Figure 5



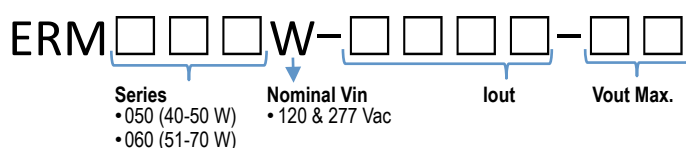
ENERGY RECOVERY PRODUCTS™



ERM050 40-50 W
ERM060 51-70 W

High Power Density Constant Current LED Drivers with 0-10 V Dimming

II - ORDERING INFORMATION - MODEL DESCRIPTION



ERP Part Number	Nominal Input Voltage (Vac)	Iout (mA)	Max Output Power (W)	Vout Min (Vdc)	Vout Nom (Vdc)	Vout Max (Vdc)	No Load Voltage (Vdc)
ERM050: 40 to 50 W							
ERM050W-1050-42	120 & 277	1050	44.1	32	37.8	42	50
ERM050W-1120-42	120 & 277	1120	47.0	32	37.8	42	50
ERM050W-1200-42	120 & 277	1200	50.4	32	37.8	42	50
ERM050W-1400-29	120 & 277	1400	40.6	22	26.1	29	34.8
ERM050W-1800-28	120 & 277	1800	50.4	21	25.2	28	33.6
ERM060: 51 to 70 W							
ERM060W-0700-82 ^[1]	120 & 277	700	57.4	62	73.8	82	98.4
ERM060W-0950-55 ^[1]	120 & 277	950	52.3	45	49.5	55	60
ERM060W-1000-70 ^[1]	120 & 277	1000	70.0	52.5	63	70	84
ERM060W-1250-42	120 & 277	1250	52.5	32	37.8	42	50
ERM060W-1400-38	120 & 277	1400	53.2	30	34.2	38	45.6
ERM060W-1400-42	120 & 277	1400	58.8	32	37.8	42	50
ERM060W-1400-47	120 & 277	1400	65.8	36	42.3	47	56.4
ERM060W-1600-42	120 & 277	1600	67.2	32	37.8	42	50
ERM060W-1750-40	120 & 277	1750	70	30	36	40	48
ERM060W-2100-28	120 & 277	2100	58.8	21	25.2	28	33.6
ERM060W-2400-28	120 & 277	2400	67.2	21	25.2	28	33.6

[1]: not Class 2

For additional options of output current and output voltage, contact your sales representative or send an email to: SaveEnergy@ERPpowerllc.com



ENERGY RECOVERY PRODUCTS™



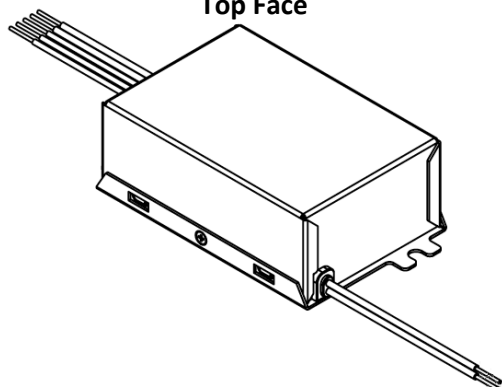
ERM050 40-50 W
ERM060 51-70 W

High Power Density Constant Current LED Drivers with 0-10 V Dimming

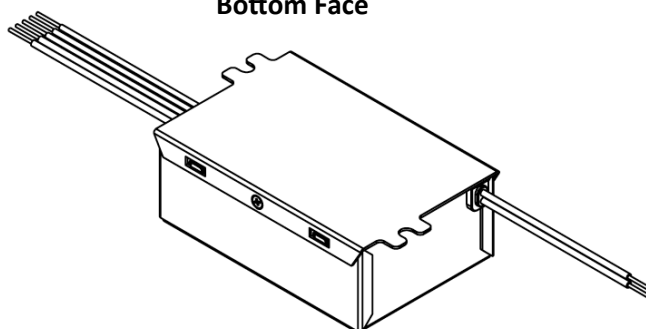
12 - LABELING

There are two labels on the case of each model in the ERM050/060 series: one on the top face and one on the bottom face. The ERM050W-1050-42 is used as an example to illustrate a typical label.

Top Face



Bottom Face



ERM050W-1050-42
Dimmable Constant Current LED Driver
Max case temperature $t_c = 90^{\circ}\text{C}$
Suitable for dry or damp locations
CAN ICES-5 B/NMB-5 B
Class II

AC INPUT:
120/277 V ~ 0.8 A
60 Hz
PF ≥ 0.9
THD $\leq 20\%$
L-BLACK
N-WHITE

Designed in the USA
Made in China

FC **c** **UL** **US**
E343741

SELV
LVLE

DC OUTPUT:
Regulated current 1050 mA
Maximum power 44.1 W
Voltage range 32-42 Vdc
No load voltage 50 Vdc
+ RED
- BLACK
+ DIM: PURPLE
- DIM: GREY
Ts : ORANGE
(For 0-10V dimming)

ERM050W-1050-42

AC INPUT:
120/277 V ~ 0.8 A
60 Hz
PF ≥ 0.9
THD $\leq 20\%$
L-BLACK
N-WHITE

DC OUTPUT:
Regulated current 1050 mA
Maximum power 44.1 W
Voltage range 32-42 Vdc
No load voltage 50 Vdc
+ RED
- BLACK
+ DIM: PURPLE
- DIM: GREY
Ts : ORANGE
(For 0-10V dimming)

tc

Figure 6

USA Headquarters

Tel: +1-805-517-1300
Fax: +1-805-517-1411
301 Science Drive, Suite 210
Moorpark, CA 93021, USA

CHINA Operations

Tel: +86-756-6266298
Fax: +86-756-6266299
No. 8 Pingdong Road 2
Zhuhai, Guangdong, China 519060

ERP - Energy Recovery Products (ERP Power, LLC) - reserves the right to make changes without further notice to any products herein. ERP makes no warranty, representation or guarantee regarding the suitability of its products for any particular purpose, nor does ERP assume any liability arising out of the application or use of any product or circuit, and specifically disclaims any and all liability, including without limitation special, consequential or incidental damages. "Typical" parameters which may be provided in ERP data sheets and/or specifications can and do vary in different applications and actual performance may vary over time. All operating parameters, including "Typicals" must be validated for each customer application by customer's technical experts. ERP does not convey any license under its patent rights nor the rights of others. ERP products are not designed, intended, or authorized for use as components in systems intended for surgical implant into the body, or other applications intended to support or sustain life, or for any other application in which the failure of the ERP product could create a situation where personal injury or death may occur. Should Buyer purchase or use ERP products for any such unintended or unauthorized application, Buyer shall indemnify and hold ERP and its officers, employees, subsidiaries, affiliates, and distributors harmless against all claims, costs, damages, and expenses, and reasonable attorney fees arising out of, directly or indirectly, any claim of personal injury or death associated with such unintended or unauthorized use, even if such claim alleges that ERP was negligent regarding the design or manufacture of the part. ERP is an Equal Opportunity/Affirmative Action Employer. This literature is subject to all applicable copyright laws and is not for resale in any manner.