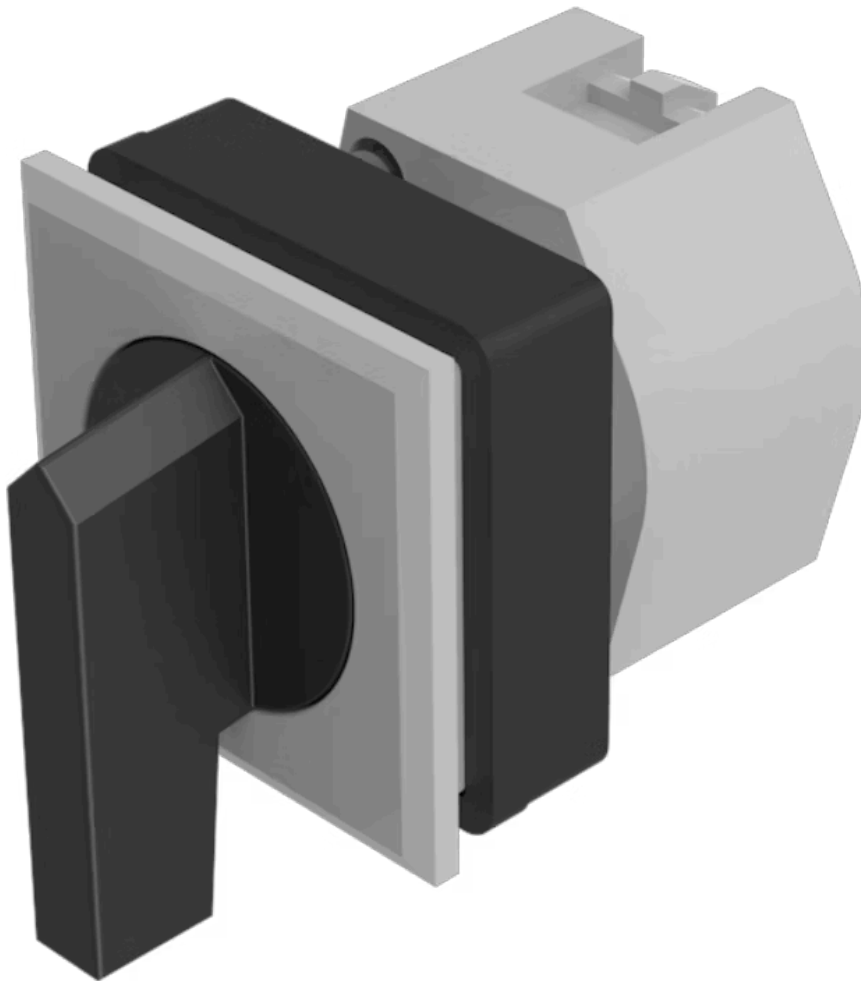
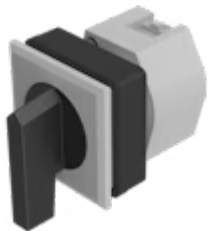


Actuator

704.292.008

Distribution by
DigiKey**DigiKey**<https://digikey.eao.com/p/704.292.008>

Your product:



704.292.008 Actuator

FRONT

Front bezel material:	Plastic
Front dimension:	35 mm x 35 mm
Front bezel colour:	Silver

MOUNTING

Design:	flush
Mounting cut-out:	30 mm x 30 mm

OPERATING-/INDICATION PART

Lever material:	plastic
Lever colour:	Black
Lever shape:	long

ELECTRICAL CHARACTERISTICS

Standards:	The switches comply with the "Standards for low-voltage switching devices" DIN EN 60947-1
------------	---

MECHANICAL CHARACTERISTIC

Mechanical lifetime:	≤2.5 Mio. cycles of operation
Switching action:	Maintained - Rest - Maintained
Switching angle:	42° left / 42° right
Switching positions:	3 positions
Weight:	0.056 kg

AMBIENT CONDITION

Storage temperature:	– 40 °C ... + 85 °C
Operating temperature:	– 40 °C ... + 55 °C
IP Protection:	IP65 front side

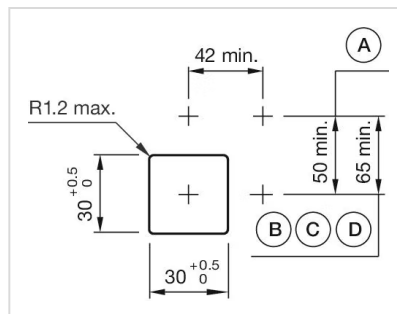
OTHER

max. number of switching elements:	3
---	---

Hints: Max. 3 switching elements can be clipped on

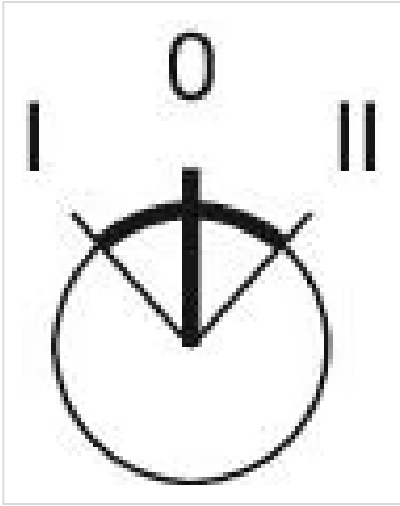
Short Description: Actuator, 30 mm x 30 mm, 35 mm x 35 mm, non illuminative, Black, long, Silver, Plastic, Maintained - Rest - Maintained

Mounting cut-outs:

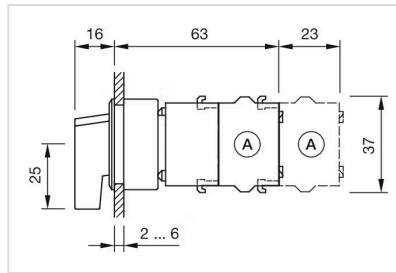


A = Screw terminal
 B = Push-in terminal (PIT)
 C = Plug-in terminal 6.3 mm x 0.8 mm
 D = Double plug-in terminal 6.3v x 0.8 mm

Switching positions:



Dimension drawings:



A = Screw terminal

Wiring diagrams:

