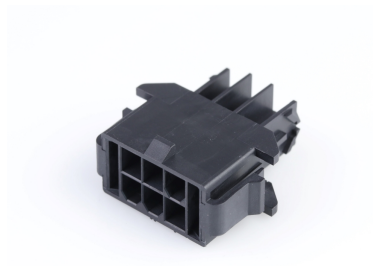




Part Number : [1727670006](#)
Product Description : Mini-Fit TPA2 Plug Housing, 4.20mm Pitch, Dual Row, UL 94V-0, Low-Halogen, 6 Circuits, Panel Mount
Series Number : [172767](#)
Status : Active
Product Category : [Connector Housings](#)



Documents & Resources

Drawings
[1727670006_sd.pdf](#)
[PK-172767-0000-000.pdf](#)

3D Models and Design Files
[1727670006_stp.zip](#)

Specifications
[AS-172718-0000-001.pdf](#)
[PS-172718-0000-001.pdf](#)
[2029880001-PS-000.pdf](#)
[1727180002-TS-000.pdf](#)
[1727180003-TS-000.pdf](#)

Product Environment Compliance

Compliance

GADSL/IMDS	Not Relevant
China RoHS	Not Relevant
EU ELV	Not Relevant
Low-Halogen Status	Not Relevant
REACH SVHC	Not Contained per D(2024)4144-DC (27 June 2024)
EU RoHS	Compliant per EU 2015/863

Multiple Part Product Compliance Statements
- Eu RoHS
- REACH SVHC
- Low-Halogen

Multiple Part Industry Compliance Documents

- IPC 1752A Class C
- IPC 1752A Class D
- Molex Product Compliance Declaration
- IEC-62474
- chemSHERPA (xml)

EU RoHS Certificate of Compliance

Part Details

General

Status	Active
Category	Connector Housings
Series	172767
Description	Mini-Fit TPA2 Plug Housing, 4.20mm Pitch, Dual Row, UL 94V-0, Low-Halogen, 6 Circuits, Panel Mount
Application	Power, Wire-to-Board, Wire-to-Wire
Comments	See product specification for current derating information.
Product Name	Mini-Fit TPA2
UPC	889056262095

Agency

UL	E29179
----	--------

Physical

Circuits (maximum)	6
Color - Resin	Black
Flammability	94V-0
Gender	Plug
Glow-Wire Capable	No
Lock to Mating Part	Yes
Material - Resin	Nylon
Net Weight	2.380/g
Number of Rows	2
Packaging Type	Bag

Panel Mount	Yes
Pitch - Mating Interface	4.20mm
Pitch - Termination Interface	4.20mm
Polarized to Mating Part	Yes
Stackable	No
Temperature Range - Operating	-40° to +105°C

Solder Process Data

Lead-Free Process Capability	N/A
------------------------------	-----

Mates With / Use With

Mates with Part(s)

Description	Part Number
Mini-Fit TPA2 and Mini-Fit Sigma Dual Row Receptacle Housings	<u>172708</u>
Mini-Fit Jr. Receptacle Housings	<u>5557</u>

Use with Part(s)

Description	Part Number
Mini-Fit TPA2/Sigma Male Crimp Terminals	<u>172765</u>
Mini-Fit TPA2/Sigma Male Crimp Terminals	<u>203070</u>
Mini-Fit TPA2 and Mini-Fit Sigma Terminal Position Assurance (TPA) Retainers	<u>172709</u>