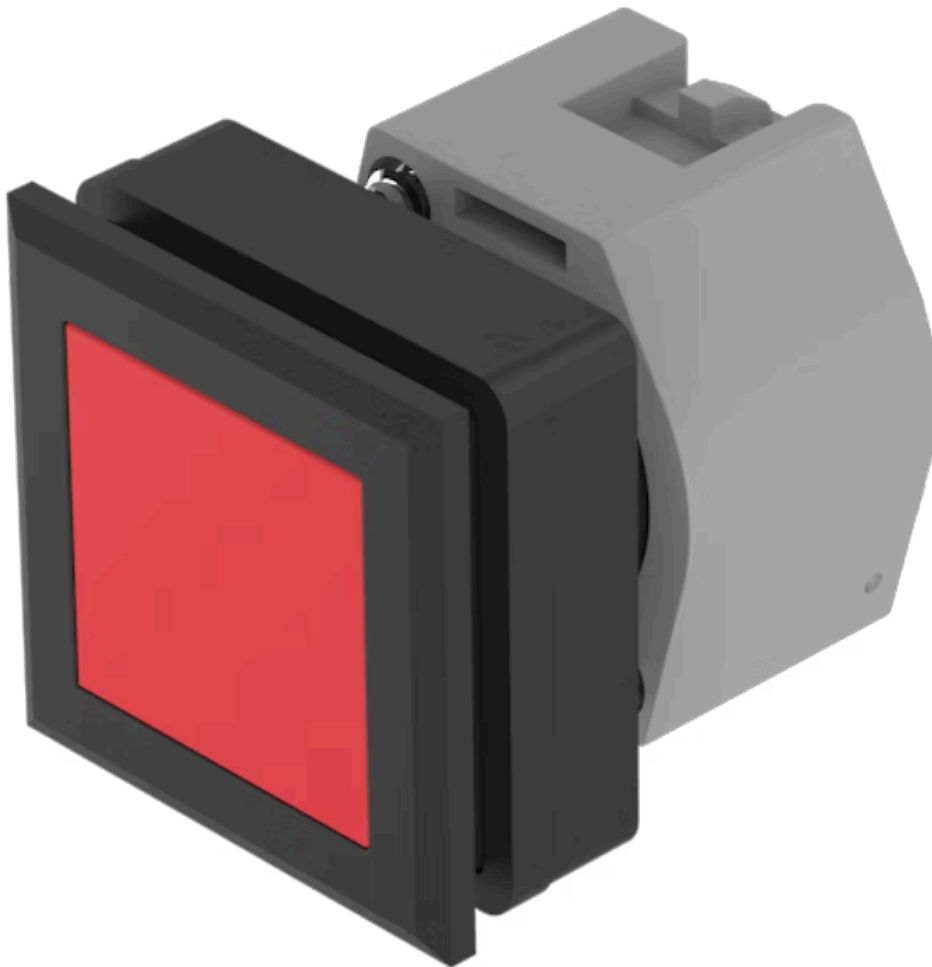


Actuator

704.239.200

Distribution by
DigiKey

DigiKey



<https://digikey.eao.com/p/704.239.200>

Your product:



704.239.200 Actuator

FRONT

Front bezel material:	Plastic
Front form:	square
Front bezel colour:	Black
Front dimension:	35 mm x 35 mm

MOUNTING

Mounting cut-out:	30 mm x 30 mm
Design:	flush

OPERATING-/INDICATION PART

Lens optics:	transparent
Lens colour:	Red
Lens illumination:	non illuminative
Lens shape:	flush
Lens material:	Plastic

ELECTRICAL CHARACTERISTICS

Standards:	The switches comply with the "Standards for low-voltage switching devices" DIN EN 60947-1
------------	---

MECHANICAL CHARACTERISTIC

Weight:	0.051 kg
Operating Travel:	ca. 5.8 mm \pm 0.2 mm

Operating force:	6.2 N
Mechanical lifetime:	1 Mio. cycles of operation
Switching action:	Maintained

AMBIENT CONDITION

IP Protection:	IP65 front side
Operating temperature:	– 40 °C ... + 55 °C
Storage temperature:	– 40 °C ... + 85 °C

OTHER

Short Description: Actuator, 30 mm x 30 mm, 35 mm x 35 mm, flush, non illuminative, Red, Plastic, transparent, square, Black, Plastic, Maintained

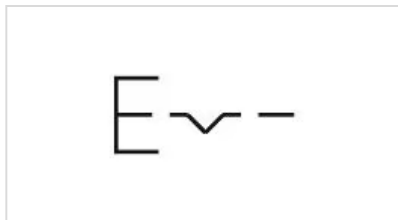
max. number of switching elements: 3

Hints: Max. 3 switching elements can be clipped on

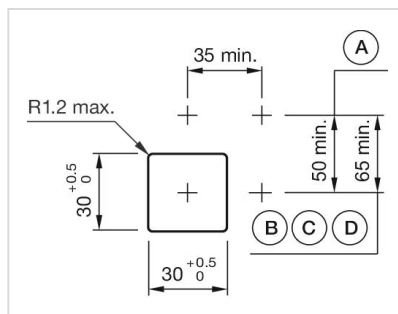
Housing material: Plastic

Housing colour: Black

Wiring diagrams:

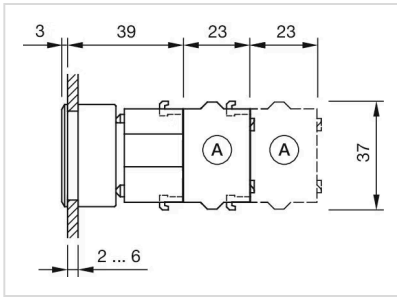


Mounting cut-outs:



A = Screw terminal
 B = Push-in terminal (PIT)
 C = Plug-in terminal 6.3 mm x 0.8 mm
 D = Double plug-in terminal 6.3 mm x 0.8 mm

Dimension drawings:



A = Screw terminal