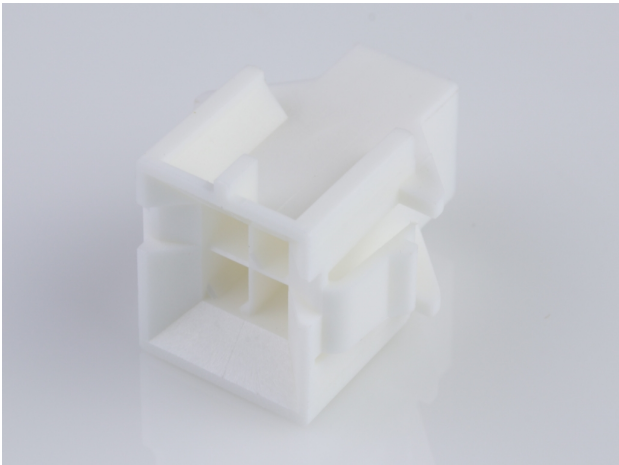




**Part Number :** [15060046](#)  
**Product Description :** Mini-Fit BMI Plug  
Housing, 4.20mm Pitch Dual Row with Panel  
Mount Ears, PA Polyamide Nylon 6/6, UL 94V-  
0, 4 Circuits  
**Series Number :** 42475  
**Status :** Active  
**Product Category :** Connector Housings  
**Engineering Number :** 42475-0421



Documents & Resources

Drawings

[Drawing 015060046\\_sd.pdf](#)

3D Models and Design Files


[3D Model 015060046\\_stp.zip](#)

Specifications

- [Packaging Specification PK-42474-001-001.pdf](#)
- [Product Specification PS-45750-001-001.pdf](#)
- [Product Specification 55560002-PS-CH-000.pdf](#)
- [Product Specification 55560002-PS-ES-000.pdf](#)
- [Product Specification 55560002-PS-SK-000.pdf](#)
- [Product Specification PS-5556-002-001.pdf](#)
- [Test Summary TS-42475-001-001.pdf](#)
- [Test Summary TS-5556-002-001.pdf](#)

Product Environment Compliance

Compliance

GADSL/IMDS	Not Relevant
China RoHS	
EU ELV	Compliant per 2000/53/EC
Low-Halogen Status	Low-Halogen per IEC 61249-2-21
REACH SVHC	Not Contained per D(2024)4144-DC (27 June 2024)
EU RoHS	Compliant per EU 2015/863

## Multiple Part Product Compliance Statements

- Eu RoHS
- REACH SVHC
- Low-Halogen

## Multiple Part Industry Compliance Documents

- IPC 1752A Class C
- IPC 1752A Class D
- Molex Product Compliance Declaration
- IEC-62474
- chemSHERPA (xml)

## EU RoHS Certificate of Compliance

---

### Part Details

#### General

Status	Active
Category	Connector Housings
Series	42475
Description	Mini-Fit BMI Plug Housing, 4.20mm Pitch Dual Row with Panel Mount Ears, PA Polyamide Nylon 6/6, UL 94V-0, 4 Circuits
Application	Power, Wire-to-Board, Wire-to-Wire
Comments	Current = 13A max. per circuit when header is mated to a receptacle loaded with 45750 series terminals crimped to 16 AWG wire. See Molex product specification PS-45750-001 for additional current derating information.
Product Family	Mini-Fit Family Power Connectors
Product Name	Mini-Fit BMI
UPC	800754320757

#### Agency

CSA	LR19980
UL	E29179

#### Physical

Circuits (maximum)	4
--------------------	---

Color - Resin	Natural
Flammability	94V-0
Gender	Plug
Glow-Wire Capable	No
Lock to Mating Part	None
Material - Resin	Nylon
Net Weight	2.720/g
Number of Rows	2
Packaging Type	Bag
Panel Mount	Yes
Pitch - Mating Interface	4.20mm
Pitch - Termination Interface	4.20mm
Polarized to Mating Part	Yes
Stackable	No
Temperature Range - Operating	-40° to +105°C

#### Solder Process Data

Lead-Free Process Capability	N/A
------------------------------	-----

---

#### Mates With / Use With

##### Mates with Part(s)

Description	Part Number
Mini-Fit BMI Receptacle Housing, 4.20mm Pitch, Dual Row with Panel Mount Ears, PA Polyamide Nylon 6/6, UL 94V-0, 4 Circuits	<u>15060041</u>
Mini-Fit HCS Receptacle Header, 4.20mm Pitch, Dual Row, Vertical, Blind Mating, with Snap-in Plastic Pegs, 4 Circuits	<u>444750421</u>
Mini-Fit BMI Vertical Dual Row Receptacle Headers	<u>42385</u>

##### Use with Part(s)

Description	Part Number
Pre-Crimped Lead Mini-Fit Male-to-Mini-Fit Male, Tin (Sn) Plating, 150.00mm Length, 18 AWG, Red	<u>797580005</u>

Pre-Crimped Lead Mini-Fit Male-to-Mini-Fit Male, Tin (Sn) Plating, 300.00mm Length, 18 AWG, Red	<u>797580013</u>
Mini-Fit Male Crimp Terminals	<u>5558</u>
Mini-Fit Plus Male Crimp Terminals	<u>46012</u>