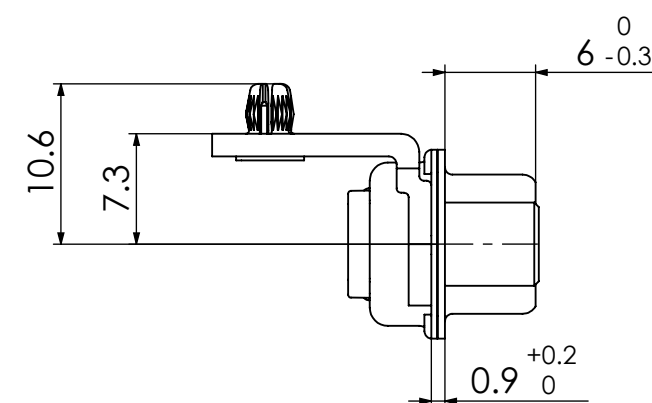
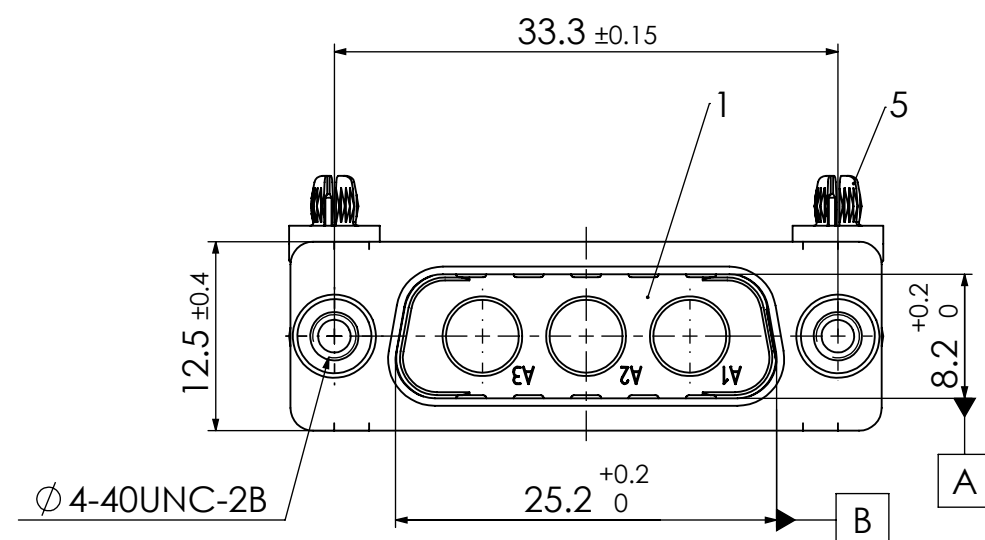
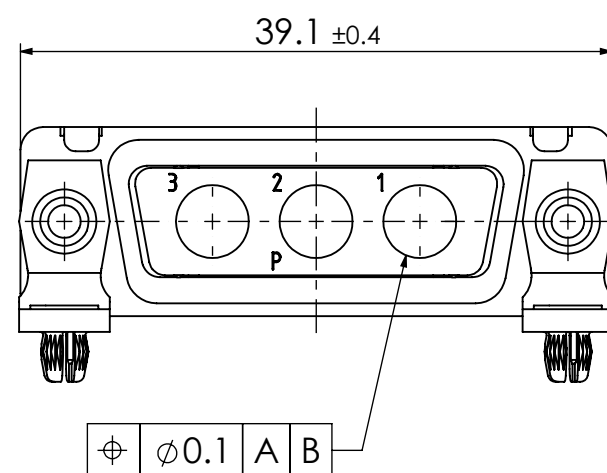
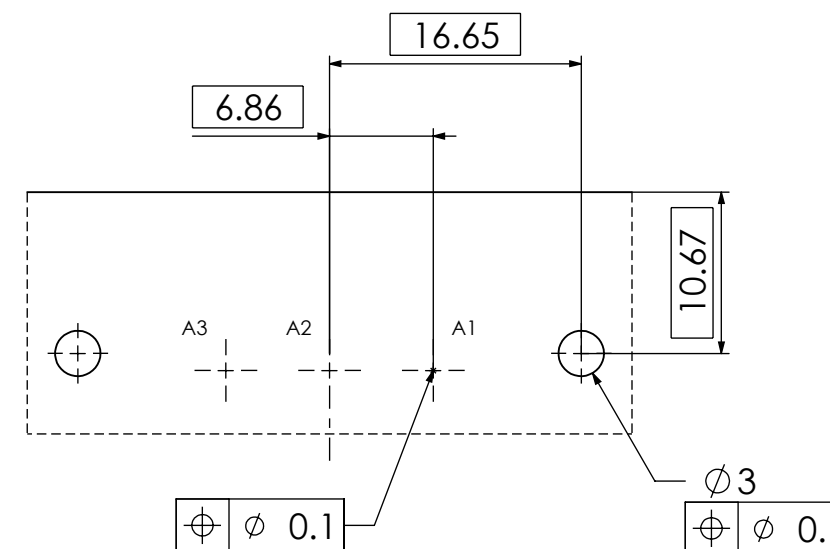
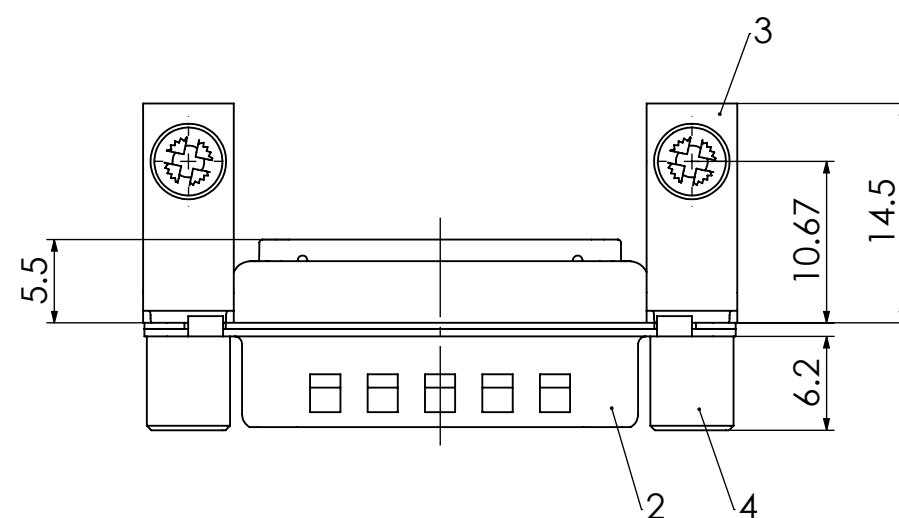


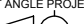
RoHS compliant
by exemption



PCB hole pattern, mounting side



5	2	Snap-in rivet	PCB 1.6mm / Brass	tin plated
4	2	Threaded spacer	MW 4-40 / Steel	tin plated
3	2	Bracket	F1080-13B / Steel	tin plated
2	1	Shell	Steel	tin plated
1	1	Insulator	PBT (-55°C to +130°C) acc. UL94V-0	green
<i>No.</i>	<i>Sf.</i>	<i>Part</i>	<i>Type Description/Material</i>	<i>Surface plating/Colour/Class</i>

FUNCTIONAL SYMBOLS <div><div>F</div><div>V</div></div> = 0 <div><div>F</div><div>G</div></div> = 0 <div><div>F</div><div>P</div></div> = 0	THIS DRAWING CONTAINS INFORMATION THAT IS PROPRIETARY TO MOLEX ELECTRONIC TECHNOLOGIES, LLC AND SHOULD NOT BE USED WITHOUT WRITTEN PERMISSION									
	DIMENSION UNITS		SCALE		MEASUREMENTS WITHOUT TOLERANCE ACC. TO ISO 2768-m			molex		
	mm		2:1							
			CURRENT REVISION			FCT D-Sub Mixed-Layout Connector				
			DRWN: DRAWN BY mteubel 07-12-2023							
			APPR: APPR BY msteinbrueck 03-01-2024							
	3	24410		INITIAL REVISION			PRODUCT CUSTOMER DRAWING			
	2	21699								
	1			DRWN: DRAWN BY sschref 01-09-2005			MATERIAL NUMBER		REVISION	
	REV.	CH.-NO.		APPR: APPR BY ADenzinger 01-09-2005			1731071013		3	
REPLACEMENT FOR:			FRIST ANGLE PROJECTION		DRAWING		DOCUMENT NUMBER		CUSTOMER	SHEET NUMBER
1731071013_Rev.A1					A3-SIZE		FM3W3P-1004		GENERAL MARKET	1 OF 1

COMMENT:
ALL RIGHTS ARE RESERVED BY US FOR THIS DRAWING. WITHOUT OUR PRIOR CONSENT,
IT MAY NEITHER BE DUPLICATED NOR MADE AVAILABLE TO A THIRD PARTY.
AND IT ALSO MAY NOT BE IMPROPERLY USED BY TE RECEIVER, OR A THIRD PARTY.