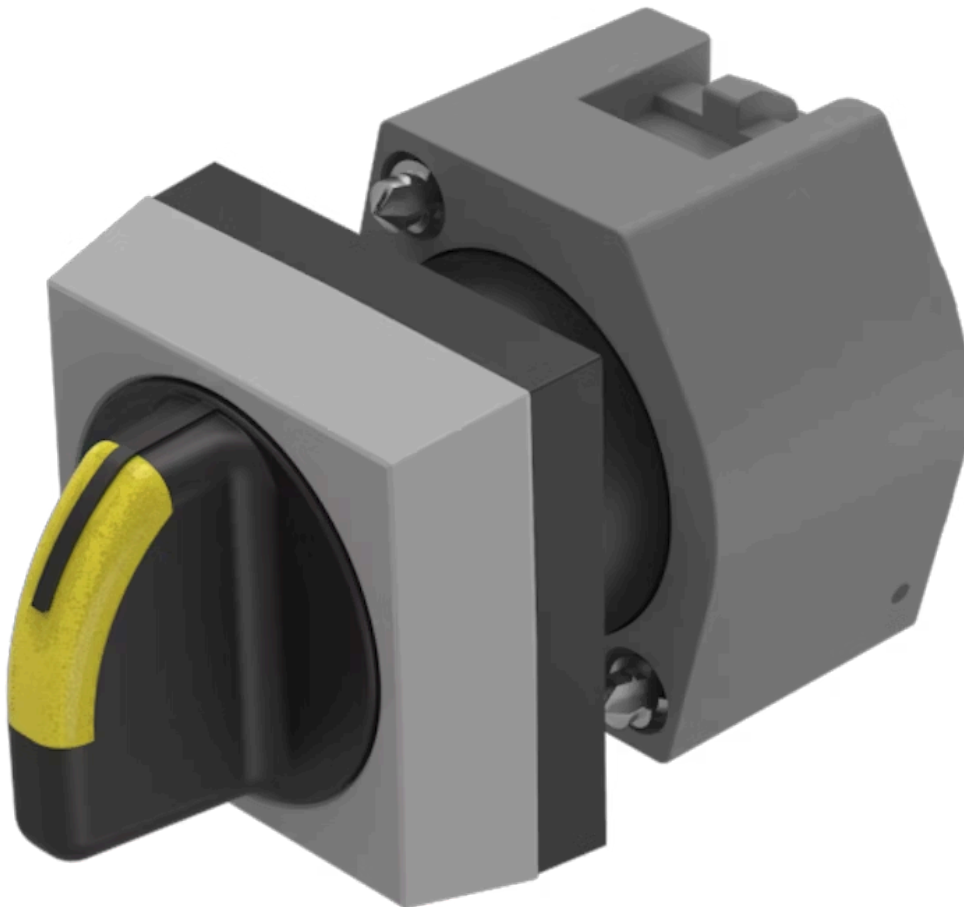


# Actuator

704.504.01

Distribution by  
DigiKey

**DigiKey**



<https://digikey.eao.com/p/704.504.01>

Your product:

---



## 704.504.01 Actuator

### FRONT

Front bezel colour:	Grey
Front dimension:	30 mm x 30 mm
Front bezel material:	Plastic

### MOUNTING

Design:	raised
---------	--------

### OPERATING-/INDICATION PART

Lever material:	plastic
Lever shape:	short
Lever colour:	Black

### ELECTRICAL CHARACTERISTICS

Standards:	The switches comply with the "Standards for low-voltage switching devices" DIN EN 60947-1
------------	---

### MECHANICAL CHARACTERISTIC

Weight:	0.034 kg
Switching action:	Momentary - Rest - Momentary
Switching angle:	42° left / 42° right
Mechanical lifetime:	≤2.5 Mio. cycles of operation
Switching positions:	3 positions

## AMBIENT CONDITION

**Storage temperature:** – 40 °C ... + 85 °C

**IP Protection:** IP65 front side

**Operating temperature:** – 40 °C ... + 55 °C

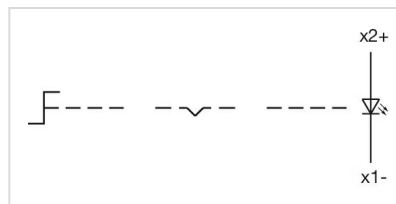
## OTHER

**Short Description:** Actuator, 30 mm x 30 mm, optional illuminative, Black, short, Grey, Plastic, Momentary - Rest - Momentary

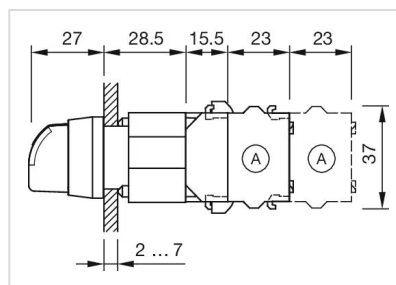
**max. number of switching elements:** 3

**Hints:** Max. 3 switching elements can be clipped on

**Wiring diagrams:**

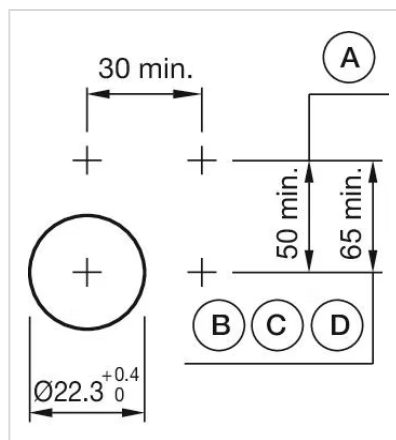


**Dimension drawings:**



A = Screw terminal

**Mounting cut-outs:**



A = Screw terminal  
B = Push-in terminal (PIT)  
C = Plug-in terminal 6.3 mm x 0.8 mm  
D = Double plug-in terminal 6.3 mm x 0.8 mm

**Switching positions:**

