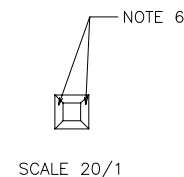
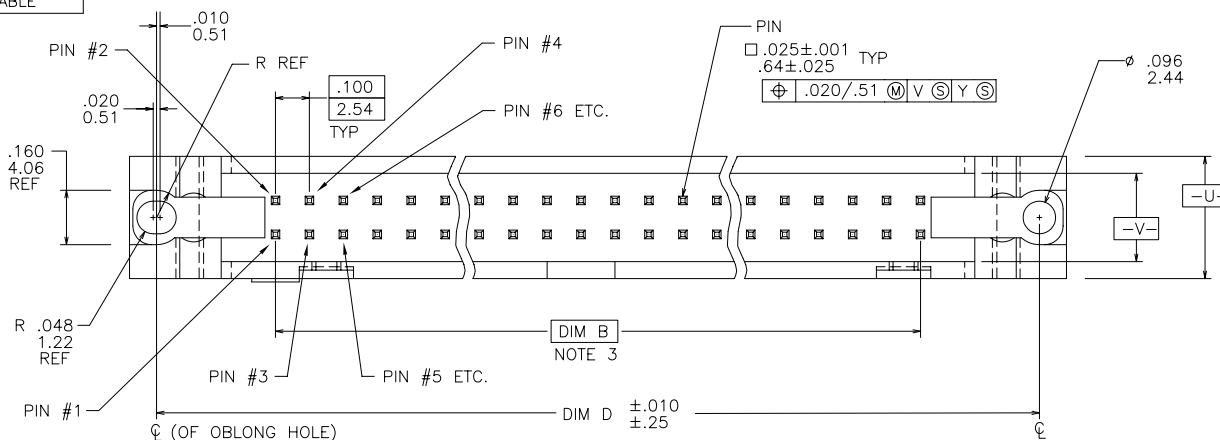
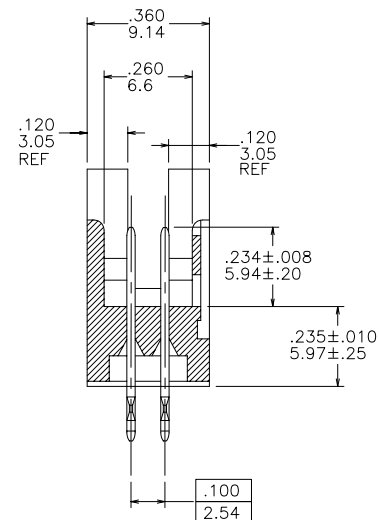
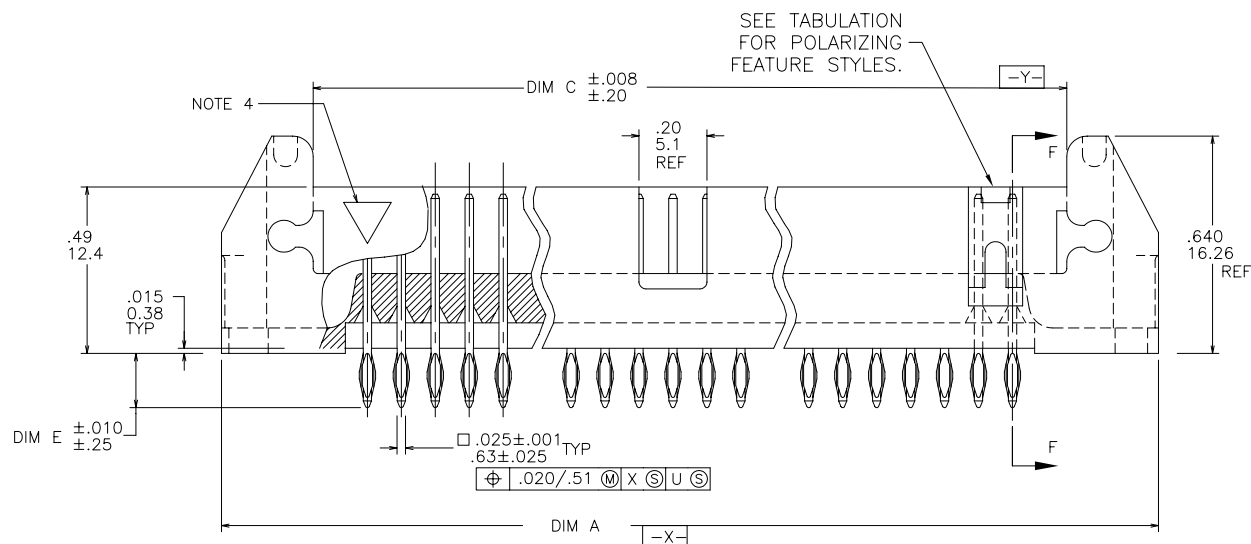


PRODUCT NUMBER
SEE TABLE



SCALE 20/1



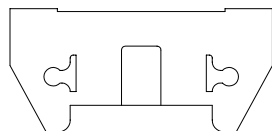
mat'l. code				surface ISO 1302 ✓		tolerance ISO 406 ISO 1101	projection INCH/MM	product family QUICKIE			
ltr	ecn	no	dr	date	tolerances unless otherwise specified		INCH/MM	title P.F. HDR. ASSEMBLY SEA HORSE 4 WALL			
AA	V01853	MEM		7/27/00	angles	.XX±.01/.3					
AB	V02910	MEM		12/05/00	linear	.XXX±.005/.13	scale 1:1	sheet 1 of 13 size A3			
AC	V20526	RGD		3/18/02	0°±2'	.XXXX±.0020/.051					
AD	V21355	GIP		9/05/02	dr	M. CLOUSER	3/01/90				
AE	V21485	GIP		9/23/02	enr	M. SMYK	3/01/90				
AF	M05-0204	MHT		11/09/05	chr	M. SMYK	3/01/90				
AG	M07-0116	AGS		2/24/07	appd	M. SMYK	3/01/90				
sheet	revision	AG	AG	AG	AG	AG	AG	AG	AG	AG	AG
index	sheet	1	2	3	4	5	6	7	8	9	10

PLATING NOTE 6	
1	30u"/.76u Au OVER 50u "/1.27u Ni
2	30u"/.76u GXT/GOLD FLASH
4	30u"/.76u GXT DUPLEX
4LF	30u"/.76u GXT & 100u"/2.54u Sn DUPLEX
5	30u"/.76u GOLD DUPLEX
5LF	30u"/.76u GOLD & 100u"/2.54u Sn DUPLEX

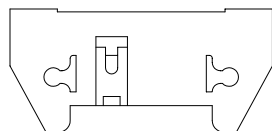
NOTE 14
NOTE 14

NOTES:

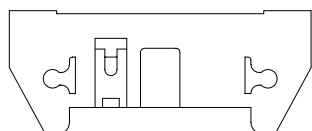
1. BODY MATERIAL; 30% GLASS FILLED POLYESTER
FLAME RETARDANT PER UL 94-V0 COLOR-BLUE.
-1XX TO -6XX BLUE PBT
-7XX TO -9XX GREY PBT
2. UNLESS OTHERWISE SPECIFIED, 1° MAX DRAFT
PERMISSIBLE ON ALL SURFACES.
- ③ DIM B BASIC DIM SHALL BE LOCATED SYMMETRICAL
TO DATUM -Y-.
4. TRIANGLE, LOGO, & PART NO. AND THEIR LOCATIONS OPTIONAL.
- ⑤ PIN MATERIAL; 3/4 HD. PHOSPHOR BRONZE ALLOY
UNS-C51000.
- ⑥ TWO NON-CRITICAL SIDES OF TIPS NOT PLATED.
TYP BOTH ENDS.
7. RECOMMENDED MOUNTING SCREW - #2-56 FILLISTER
HEAD MACHINE SCREW .25/6.35 LONG FOR
.063/1.58 & .094/2.38 BOARDS, .313/7.93 LONG
FOR .125/3.18 BOARDS.
8. 3 LBS/1.36 KG PIN RETENTION IN BOTH DIRECTIONS.
9. LOW PROFILE LATCHES TO BE USED WITH FEMALE
CONNECTOR WITHOUT STRAIN RELIEF STANDARD
LATCHES TO BE USED WITH FEMALE CONNECTORS
WITH STRAIN RELIEF.
- ⑩ ADD AN "A" AFTER THE 8 DIGIT PART NUMBER FOR
CUSTOMER SPECIAL.
11. RECOMMENDED PLATED-THRU-HOLE DIMENSIONS ARE:
DRILLED HOLE: .0453/1.151±.0010/.025 DIA
COPPER PLATING THICKNESS .001/.025 TO .003/.076
SOLDER PLATING THICKNESS: .0003/.076 TO .0007/.0178
OVERALL HOLE SIZE: .040/1.016±.003/.076 DIA
- ⑫ ADD "LF" SUFFIX AT THE END OF PART NUMBER FOR LEAD FREE OPTION.
- ⑬ THESE PRODUCT MEETS EUROPEAN UNION DIRECTIVES AND OTHER
COUNTRY REGULATION AS DESCRIBED IN GS-22-008.
- ⑭ PLATING OPTIONS:
MAY BE EITHER GOLD OR GXT PLATED AT MANUFACTURER'S OPTION.
15. THE PRODUCT IS NOT INTENDED TO BE EXPOSED TO A MANUFACTURING SOLDER
PROCESS.



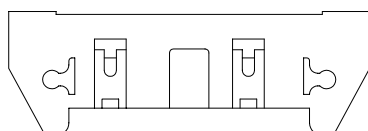
2x5
STYLE A



2x5
STYLE B



2x7
STYLE C



2 X 8 & LARGER
STYLE D

mat'l. code				surface ISO 1302 ✓	tolerance ISO 406 ISO 1101	projection INCH/MM	product family QUICKIE
ltr	ecn	no	dr	date	tolerances unless otherwise specified		title
AG					angles .XX±.01/.3		P.F. HDR. ASSEMBLY
					linear .XXX±.005/.13		SEA HORSE 4 WALL
					0°±2' .XXXX±.0020/.051	scale 1:1	
				dr	M. CLOUSER 3/01/90	FCI	dwg no
				enr	M. SMYK 3/01/90		sheet2 of13size
				chr	M. SMYK 3/01/90		68710 A3
				appd	M. SMYK 3/01/90		type Product Customer Drawing
sheet	revision						
index	sheet						



FCIconnect.com

Copyright FCI

PRODUCT NUMBER	SIZE	STYLE	LATCH	DIM A	DIM B	DIM C	DIM D	DIM E	PIN PLATING	LEAD FREE PIN PLATING	LEAD FREE OPTION
68710-001	2 X 5	A	NONE	1.26/32.00	.400/10.16	.720/18.28	1.100/27.94	.160/4.06	1	1	NOTE 12
-002								.160/4.06	2	2	
-003								.610/15.49	1	1	
-004								.610/15.49	2	2	
-005								.733/18.62	1	1	
-006			NONE					.733/18.62	2	2	
-007			STD.					.160/4.06	1	1	
-008								.160/4.06	2	2	
-009								.610/15.49	1	1	
-010								.610/15.49	2	2	
-011								.733/18.62	1	1	
-012			STD.					.733/18.62	2	2	
-013			LOW PROFILE					.160/4.06	1	1	
-014								.160/4.06	2	2	
-015								.610/15.49	1	1	
-016								.610/15.49	2	2	
-017								.733/18.62	1	1	
-018		A	LOW PROFILE					.733/18.62	2	2	
-019		B	NONE					.160/4.06	1	1	
-020								.160/4.06	2	2	
-021								.610/15.49	1	1	
-022								.610/15.49	2	2	
-023								.733/18.62	1	1	
-024			NONE					.733/18.62	2	2	
-025			STD.					.160/4.06	1	1	
-026								.160/4.06	2	2	
-027								.610/15.49	1	1	
-028								.610/15.49	2	2	
-029								.733/18.62	1	1	
-030			STD.					.733/18.62	2	2	
-031			LOW PROFILE					.160/4.06	1	1	
-032								.160/4.06	2	2	
-033								.610/15.49	1	1	
-034								.610/15.49	2	2	
-035								.733/18.62	1	1	
68710-036	2 X 5	B	LOW PROFILE	1.26/32.00	.400/10.16	.720/18.28	1.100/27.94	.733/18.62	2	2	NOTE 12

mat'l. code				surface ISO 1302 ✓		tolerance ISO 406 ISO 1101		projection 		product family QUICKIE			
ltr ecn no dr date				tolerances unless otherwise specified						title			
AG				angles		linear .XX±.01/.3		INCH/MM		P.F. HDR. ASSEMBLY SEA HORSE 4 WALL			
				0°±2'		linear .XXX±.005/.13		scale 1:1		dwg no sheet3 of13size			
				dr M. CLOUSER		3/01/90				68710 A3			
				enr M. SMYK		3/01/90				type Product Customer Drawing			
				chr M. SMYK		3/01/90							
				appd M. SMYK		3/01/90							
sheet index		revision sheet											



FCIconnect.com

Copyright FCI

PRODUCT NUMBER	SIZE	STYLE	LATCH	DIM A	DIM B	DIM C	DIM D	DIM E	PIN PLATING SEE SHT. 2	LEAD FREE PIN PLATING	LEAD FREE OPTION
68710-037	2 X 7	C	NONE	1.46/37.08	.600/15.24	.920/23.37	1.300/33.02	.160/4.06	1	1	NOTE 12
-038								.160/4.06	2	2	
-039								.610/15.49	1	1	
-040								.610/15.49	2	2	
-041								.733/18.62	1	1	
-042			NONE					.733/18.62	2	2	
-043			STD.					.160/4.06	1	1	
-044								.160/4.06	2	2	
-045								.610/15.49	1	1	
-046								.610/15.49	2	2	
-047								.733/18.62	1	1	
-048			STD.					.733/18.62	2	2	
-049			LOW PROFILE					.160/4.06	1	1	
-050								.160/4.06	2	2	
-051								.610/15.49	1	1	
-052								.610/15.49	2	2	
-053								.733/18.62	1	1	
-054	2 X 7	C	LOW PROFILE	1.46/37.08	.600/15.24	.920/23.37	1.300/33.02	.733/18.62	2	2	
-055	2 X 8	D	NONE	1.56/39.62	.700/17.78	1.020/25.91	1.400/35.56	.160/4.06	1	1	
-056								.160/4.06	2	2	
-057								.610/15.49	1	1	
-058								.610/15.49	2	2	
-059								.733/18.62	1	1	
-060			NONE					.733/18.62	2	2	
-061			STD.					.160/4.06	1	1	
-062								.160/4.06	2	2	
-063								.610/15.49	1	1	
-064								.610/15.49	2	2	
-065								.733/18.62	1	1	
-066			STD.					.733/18.62	2	2	
-067			LOW PROFILE					.160/4.06	1	1	
-068								.160/4.06	2	2	
-069								.610/15.49	1	1	
-070								.610/15.49	2	2	
-071								.733/18.62	1	1	
68710-072	2 X 8	D	LOW PROFILE	1.56/39.62	.700/17.78	1.020/25.91	1.400/35.56	.733/18.62	2	2	NOTE 12

mat'l. code				surface ISO 1302 <input checked="" type="checkbox"/> ISO 406 ISO 1101		tolerance ISO 406 ISO 1101		projection 		product family QUICKIE	
ltr	ecn	no	dr	date	tolerances unless otherwise specified		linear .XX±.01/.3		title P.F. HDR. ASSEMBLY SEA HORSE 4 WALL		FCI
AG					angles	linear .XXX±.005/.13	INCH/MM				
					0°±2°	.XXXX±.0020/.051	scale 1:1				
					dr	M. CLOUSER	3/01/90	dwg no		sheet4 of13size	
					engr	M. SMYK	3/01/90			68710	A3
					chr	M. SMYK	3/01/90			type Product Customer Drawing	
					appd	M. SMYK	3/01/90				
sheet index	revision sheet										



FCIconnect.com

Copyright FCI

PRODUCT NUMBER	SIZE	STYLE	LATCH	DIM A	DIM B	DIM C	DIM D	DIM E	PIN PLATING	LEAD FREE PIN PLATING	LEAD FREE OPTION
68710-073	2 X 10	D	NONE	1.76/44.70	.900/22.86	1.220/30.99	1.600/40.64	.160/4.06	1	1	NOTE 12
-074								.160/4.06	2	2	
-075								.610/15.49	1	1	
-076								.610/15.49	2	2	
-077								.733/18.62	1	1	
-078			NONE					.733/18.62	2	2	
-079			STD.					.160/4.06	1	1	
-080								.160/4.06	2	2	
-081								.610/15.49	1	1	
-082								.610/15.49	2	2	
-083								.733/18.62	1	1	
-084			STD.					.733/18.62	2	2	
-085			LOW PROFILE					.160/4.06	1	1	
-086								.160/4.06	2	2	
-087								.610/15.49	1	1	
-088								.610/15.49	2	2	
-089								.733/18.62	1	1	
-090	2 X 10	D	LOW PROFILE	1.76/44.70	.900/22.86	1.220/30.99	1.600/40.64	.733/18.62	2	2	
-091	2 X 12	D	NONE	1.96/49.78	1.100/27.94	1.420/36.07	1.800/45.72	.160/4.06	1	1	NOTE 12
-092								.160/4.06	2	2	
-093								.610/15.49	1	1	
-094								.610/15.49	2	2	
-095								.733/18.62	1	1	
-096			NONE					.733/18.62	2	2	
-097			STD.					.160/4.06	1	1	
-098								.160/4.06	2	2	
-099								.610/15.49	1	1	
-100								.610/15.49	2	2	
-101								.733/18.62	1	1	NOTE 12
-102			STD.					.733/18.62	2	2	
-103			LOW PROFILE					.160/4.06	1	1	
-104								.160/4.06	2	2	
-105								.610/15.49	1	1	
-106								.610/15.49	2	2	
-107								.733/18.62	1	1	
68710-108	2 X 12	D	LOW PROFILE	1.96/49.78	1.100/27.94	1.420/36.07	1.800/45.72	.733/18.62	2	2	

mat'l. code				surface ISO 1302 <input checked="" type="checkbox"/> ISO 406 ISO 1101		tolerance ISO 406 ISO 1101		projection 		product family QUICKIE	
ltr				ecn		no		dr		date	
AG											
				angles		linear		.XX±.01/.3		INCH/MM	
				0°±2'				.XXX±.005/.13			
								.XXXX±.0020/.051		scale 1:1	
				dr		M. CLOUSER		3/01/90		sheet5 of13size	
				enr		M. SMYK		3/01/90		A3	
				chr		M. SMYK		3/01/90		type Product Customer Drawing	
				appd		M. SMYK		3/01/90			
sheet		revision									
index		sheet									



FCIconnect.com

Copyright FCI

PRODUCT NUMBER	SIZE	STYLE	LATCH	DIM A	DIM B	DIM C	DIM D	DIM E	PIN PLATING	LEAD FREE PIN PLATING	LEAD FREE OPTION
68710-109	2 X 13	D	NONE	2.06/52.32	1.200/30.48	1.520/38.61	1.900/48.26	.160/4.06	1	1	NOTE 12
-110								.160/4.06	2	2	
-111								.610/15.49	1	1	
-112								.610/15.49	2	2	
-113								.733/18.62	1	1	
-114			NONE					.733/18.62	2	2	
-115			STD.					.160/4.06	1	1	
-116								.160/4.06	2	2	
-117								.610/15.49	1	1	
-118								.610/15.49	2	2	
-119								.733/18.62	1	1	
-120			STD.					.733/18.62	2	2	
-121			LOW PROFILE					.160/4.06	1	1	
-122								.160/4.06	2	2	
-123								.610/15.49	1	1	
-124								.610/15.49	2	2	
-125								.733/18.62	1	1	
-126	2 X 13	D	LOW PROFILE	2.06/52.32	1.200/30.48	1.520/38.61	1.900/48.26	.733/18.62	2	2	
-127	2 X 15	D	NONE	2.26/57.40	1.400/35.56	1.720/43.69	2.100/53.34	.160/4.06	1	1	
-128								.160/4.06	2	2	
-129								.610/15.49	1	1	
-130								.610/15.49	2	2	
-131								.733/18.62	1	1	NOTE 12
-132			NONE					.733/18.62	2	2	
-133			STD.					.160/4.06	1	1	
-134								.160/4.06	2	2	
-135								.610/15.49	1	1	
-136								.610/15.49	2	2	
-137								.733/18.62	1	1	
-138			STD.					.733/18.62	2	2	
-139			LOW PROFILE					.160/4.06	1	1	
-140								.160/4.06	2	2	
-141								.610/15.49	1	1	
-142								.610/15.49	2	2	
-143								.733/18.62	1	1	
68710-144	2 X 15	D	LOW PROFILE	2.26/57.40	1.400/35.56	1.720/43.69	2.100/53.34	.733/18.62	2	2	

mat'l. code		surface ISO 1302 ✓		tolerance ISO 406 ISO 1101		projection 		product family QUICKIE	
ltr		ecn no		dr		date		title	
AG								P.F. HDR. ASSEMBLY SEA HORSE 4 WALL	
								scale 1:1	
								sheet6 of13size	
								A3	
								type Product Customer Drawing	
sheet index		revision sheet							



FCIconnect.com

Copyright FCI

PRODUCT NUMBER	SIZE	STYLE	LATCH	DIM A	DIM B	DIM C	DIM D	DIM E	PIN PLATING	LEAD FREE PIN PLATING	LEAD FREE OPTION
68710-145	2 X 17	D	NONE	2.46/62.48	1.600/40.64	1.920/48.79	2.300/58.42	.160/4.06	1	1	NOTE 12
-146								.160/4.06	2	2	
-147								.610/15.49	1	1	
-148								.610/15.49	2	2	
-149								.733/18.62	1	1	
-150			NONE					.733/18.62	2	2	
-151			STD.					.160/4.06	1	1	
-152								.160/4.06	2	2	
-153								.610/15.49	1	1	
-154								.610/15.49	2	2	
-155								.733/18.62	1	1	
-156			STD.					.733/18.62	2	2	
-157			LOW PROFILE					.160/4.06	1	1	
-158								.160/4.06	2	2	
-159								.610/15.49	1	1	
-160								.610/15.49	2	2	
-161								.733/18.62	1	1	
-162	2 X 17	D	LOW PROFILE	2.46/62.48	1.600/40.64	1.920/48.79	2.300/58.42	.733/18.62	2	2	
-163	2 X 20	D	NONE	2.76/70.10	1.900/48.26	2.220/56.39	2.600/66.04	.160/4.06	1	1	
-164								.160/4.06	2	2	
-165								.610/15.49	1	1	
-166								.610/15.49	2	2	
-167								.733/18.62	1	1	NOTE 12
-168			NONE					.733/18.62	2	2	
-169			STD.					.160/4.06	1	1	
-170								.160/4.06	2	2	
-171								.610/15.49	1	1	
-172								.610/15.49	2	2	
-173								.733/18.62	1	1	
-174			STD.					.733/18.62	2	2	
-175			LOW PROFILE					.160/4.06	1	1	
-176								.160/4.06	2	2	
-177								.610/15.49	1	1	
-178								.610/15.49	2	2	
-179								.733/18.62	1	1	
68710-180	2 X 20	D	LOW PROFILE	2.76/70.10	1.900/48.26	2.220/56.39	2.600/66.04	.733/18.62	2	2	NOTE 12

mat'l. code				surface ISO 1302 ✓		tolerance ISO 406 ISO 1101		projection 		product family QUICKIE			
ltr				ecn no		dr		date		tolerances unless otherwise specified			
AG										linear .XX±.01/.3			
										linear .XXX±.005/.13			
										INCH/MM			
										scale 1:1			
										dr M. CLOUSER 3/01/90			
										enr M. SMYK 3/01/90			
										chr M. SMYK 3/01/90			
										appd M. SMYK 3/01/90			
sheet index		revision sheet										sheet 7 of 13	
												size A3	
												type Product Customer Drawing	



FCIconnect.com

Copyright FCI

PRODUCT NUMBER	SIZE	STYLE	LATCH	DIM A	DIM B	DIM C	DIM D	DIM E	PIN PLATING	LEAD FREE PIN PLATING	LEAD FREE OPTION
68710-181	2 X 22	D	NONE	2.96/75.18	2.100/53.34	2.420/61.47	2.800/71.12	.160/4.06	1	1	NOTE 12
-182								.160/4.06	2	2	
-183								.610/15.49	1	1	
-184								.610/15.49	2	2	
-185								.733/18.62	1	1	
-186			NONE					.733/18.62	2	2	
-187			STD.					.160/4.06	1	1	
-188								.160/4.06	2	2	
-189								.610/15.49	1	1	
-190								.610/15.49	2	2	
-191								.733/18.62	1	1	
-192			STD.					.733/18.62	2	2	
-193			LOW PROFILE					.160/4.06	1	1	
-194								.160/4.06	2	2	
-195								.610/15.49	1	1	
-196								.610/15.49	2	2	
-197								.733/18.62	1	1	
-198	2 X 22	D	LOW PROFILE	2.96/75.18	2.100/53.34	2.420/61.47	2.800/71.12	.733/18.62	2	2	
-199	2 X 25	D	NONE	3.26/82.80	2.400/60.96	2.720/69.09	3.100/78.74	.160/4.06	1	1	
-200								.160/4.06	2	2	
-201								.610/15.49	1	1	
-202								.610/15.49	2	2	
-203								.733/18.62	1	1	
-204			NONE					.733/18.62	2	2	
-205			STD.					.160/4.06	1	1	
-206								.160/4.06	2	2	
-207								.610/15.49	1	1	
-208								.610/15.49	2	2	
-209								.733/18.62	1	1	
-210			STD.					.733/18.62	2	2	
-211			LOW PROFILE					.160/4.06	1	1	
-212								.160/4.06	2	2	
-213								.610/15.49	1	1	
-214								.610/15.49	2	2	
-215								.733/18.62	1	1	
68710-216	2 X 25	D	LOW PROFILE	3.26/82.80	2.400/60.96	2.720/69.09	3.100/78.74	.733/18.62	2	2	NOTE 12

mat'l. code				surface ISO 1302 ✓		tolerance ISO 406 ISO 1101		projection 		product family QUICKIE	
ltr				ecn		no		dr		date	
AG				angles		linear		linear		INCH/MM	
				0°±2'						scale 1:1	
				dr		M. CLOUSER		3/01/90		sheet8 of13size	
				enr		M. SMYK		3/01/90		A3	
				chr		M. SMYK		3/01/90		type Product Customer Drawing	
				appd		M. SMYK		3/01/90			
sheet index		revision sheet									



FCIconnect.com

Copyright FCI



PRODUCT NUMBER	SIZE	STYLE	LATCH	DIM A	DIM B	DIM C	DIM D	DIM E	PIN PLATING	LEAD FREE PIN PLATING	LEAD FREE OPTION
68710-217	2 X 30	D	NONE	3.76/95.50	2.900/73.66	3.220/81.79	3.600/91.44	.160/4.06	1	1	NOTE 12
-218								.160/4.06	2	2	
-219								.610/15.49	1	1	
-220								.610/15.49	2	2	
-221								.733/18.62	1	1	
-222			NONE					.733/18.62	2	2	
-223			STD.					.160/4.06	1	1	
-224								.160/4.06	2	2	
-225								.610/15.49	1	1	
-226								.610/15.49	2	2	
-227								.733/18.62	1	1	
-228			STD.					.733/18.62	2	2	
-229			LOW PROFILE					.160/4.06	1	1	
-230								.160/4.06	2	2	
-231								.610/15.49	1	1	
-232								.610/15.49	2	2	
-233								.733/18.62	1	1	
-234	2 X 30	D	LOW PROFILE	3.76/95.50	2.900/73.66	3.220/81.79	3.600/91.44	.733/18.62	2	2	
-235	2 X 5	A	STD.	1.26/32.00	.400/10.16	.720/18.28	1.100/27.94	.250/6.35	2	2	
-236	2 X 8	D		1.56/39.62	.700/17.78	1.020/25.91	1.400/35.56				
-237	2 X 10			1.76/44.70	.900/22.86	1.220/30.99	1.600/40.64				
-238	2 X 13			2.06/52.34	1.200/30.48	1.520/38.61	1.900/48.26				
-239	2 X 17			2.46/62.48	1.600/40.64	1.920/48.79	2.300/58.42				
-240	2 X 20			2.76/70.10	1.900/48.26	2.220/56.39	2.600/66.04				
-241	2 X 25			3.26/82.80	2.400/60.96	2.720/69.09	3.100/78.74				
-242	2 X 30	D	STD.	3.76/95.50	2.900/73.66	3.220/81.79	3.600/91.44				
-243	2 X 15	D	STD.	2.26/57.40	1.400/35.56	1.720/43.69	2.100/53.34				
-244	2 X 5	A	NONE	1.26/32.00	.400/10.16	.720/18.28	1.100/27.94				
-245	2 X 8	D		1.56/39.62	.700/17.78	1.020/25.91	1.400/35.56				
-246	2 X 10			1.76/44.70	.900/22.86	1.220/30.99	1.600/40.64				
-247	2 X 13			2.06/52.34	1.200/30.48	1.520/38.61	1.900/48.26				
-248	2 X 17			2.46/62.48	1.600/40.64	1.920/48.79	2.300/58.42				
-249	2 X 20			2.76/70.10	1.900/48.26	2.220/56.39	2.600/66.04				
-250	2 X 25			3.26/82.80	2.400/60.96	2.720/69.09	3.100/78.74				
68710-251	2 X 30			3.76/95.50	2.900/73.66	3.220/81.79	3.600/91.44	.250/6.35	2	2	NOTE 12

NOTE 10
NOTE 10
NOTE 10
NOTE 10
NOTE 10
NOTE 10
NOTE 10
NOTE 10

mat'l. code				surface ISO 1302 ✓ ISO 406 ISO 1101		tolerance tolerances unless otherwise specified		projection INCH/MM		product family QUICKIE			
ltr ecn no dr date				angles linear .XX±.01/.3		linear .XXX±.005/.13		INCH/MM		title P.F. HDR. ASSEMBLY SEA HORSE 4 WALL			
AG				0°±2'		.XXXX±.0020/.051		scale 1:1		dwg no sheet9 of13size			
				dr M. CLOUSER 3/01/90		enr M. SMYK 3/01/90		FCI		68710 A3			
				chr M. SMYK 3/01/90		appd M. SMYK 3/01/90				type Product Customer Drawing			
sheet index		revision sheet											

form: A3

PRODUCT NUMBER	SIZE	STYLE	LATCH	DIM A	DIM B	DIM C	DIM D	DIM E	PIN PLATING	LEAD FREE PIN PLATING	POLARIZED MISSING PIN	LEAD FREE OPTION
68710-252	2 x 15	D	NONE	2.26/57.40	1.400/35.56	1.720/43.69	2.100/53.34	.250/6.35	2	2		NOTE 12
68710-253	2 X 20	D	STD.	2.76/70.10	1.900/48.26	2.220/56.39	2.600/66.04	.160/4.06	2	2	PIN #20	NOTE 12
68710-309	2 x 5	B	STD.	1.26/32.00	.400/10.16	.720/18.28	1.100/27.94	.160/4.06	1	1	PIN #1	NOTE 12
68710-310	2 x 17	D	STD.	2.46/62.48	1.600/40.64	1.920/48.79	2.300/58.42	.160/4.06	1	1	PIN #25	NOTE 12

mat'l. code					surface ISO 1302 <input checked="" type="checkbox"/>		tolerance ISO 406 ISO 1101		projection 		product family QUICKIE													
ltr		ecn no		dr		date		tolerances unless otherwise specified					title											
AG								angles		linear .XX±.01/.3			INCH/MM			P.F. HDR. ASSEMBLY								
								0°±2°		.XXX±.005/.13			scale 1:1			SEA HORSE 4 WALL								
								dr		M. CLOUSER		3/01/90					dwg no		sheet10 of13		size			
								enr		M. SMYK		3/01/90					68710		A3					
								chr		M. SMYK		3/01/90												
								appd		M. SMYK		3/01/90												
sheet index		revision sheet															type		Product		Customer		Drawing	



FCIconnect.com

Copyright FCI

PRODUCT NUMBER	SIZE	STYLE	LATCH	DIM A	DIM B	DIM C	DIM D	DIM E	PIN PLATING	LEAD FREE PIN PLATING	NOTES	PIN REMOVED	LEAD FREE OPTION
68710-400	2 x 5	A	NONE	1.26/32.00	.400/10.16	.720/18.28	1.100/27.94	.250/6.35	4	4LF			NOTE 12
-401	2 x 7	C		1.460/37.08	.600/15.24	.920/23.37	1.300/33.02						
-402	2 x 8	D		1.56/39.62	.700/17.78	1.020/25.91	1.400/35.56						
-403	2 x 10			1.76/44.70	.900/22.86	1.220/30.99	1.600/40.64						
-404	2 x 12			1.960/49.78	1.100/27.94	1.420/36.07	1.800/45.72						
-405	2 x 13			2.06/52.34	1.200/30.48	1.520/38.61	1.900/48.26						
-406	2 x 15			2.26/57.40	1.400/35.56	1.720/43.69	2.100/53.34						
-407	2 x 17			2.46/62.48	1.600/40.64	1.920/48.79	2.300/58.42						
-408	2 x 20			2.76/70.10	1.900/48.26	2.220/56.39	2.600/66.04						
-409	2 x 22			2.960/75.18	2.100/53.34	2.420/61.47	2.800/71.12						
-410	2 x 25			3.26/82.80	2.400/60.96	2.720/69.09	3.100/78.74						
-411	2 x 30	D	NONE	3.76/95.50	2.900/73.66	3.220/81.79	3.600/91.44						
-420	2 x 5	A	STD.	1.26/32.00	.400/10.16	.720/18.28	1.100/27.94				NOTE 10		
-421	2 x 7	C		1.460/37.08	.600/15.24	.920/23.37	1.300/33.02				NOTE 10		
-422	2 x 8	D		1.56/39.62	.700/17.78	1.020/25.91	1.400/35.56				NOTE 10		
-423	2 x 10			1.76/44.70	.900/22.86	1.220/30.99	1.600/40.64				NOTE 10		
-424	2 x 12			1.960/49.78	1.100/27.94	1.420/36.07	1.800/45.72				NOTE 10		
-425	2 x 13			2.06/52.34	1.200/30.48	1.520/38.61	1.900/48.26				NOTE 10		
-426	2 x 15			2.26/57.40	1.400/35.56	1.720/43.69	2.100/53.34				NOTE 10		
-427	2 x 17			2.46/62.48	1.600/40.64	1.920/48.79	2.300/58.42				NOTE 10		
-428	2 x 20			2.76/70.10	1.900/48.26	2.220/56.39	2.600/66.04				NOTE 10		
-429	2 x 22			2.960/75.18	2.100/53.34	2.420/61.47	2.800/71.12				NOTE 10		
-430	2 x 25			3.26/82.80	2.400/60.96	2.720/69.09	3.100/78.74				NOTE 10		
-431	2 x 30	D	STD.	3.76/95.50	2.900/73.66	3.220/81.79	3.600/91.44				NOTE 10		
-440	2 x 5	A	LOW PROFILE	1.26/32.00	.400/10.16	.720/18.28	1.100/27.94						
-441	2 x 7	C		1.460/37.08	.600/15.24	.920/23.37	1.300/33.02						
-442	2 x 8	D		1.56/39.62	.700/17.78	1.020/25.91	1.400/35.56						
-443	2 x 10			1.76/44.70	.900/22.86	1.220/30.99	1.600/40.64						
-444	2 x 12			1.960/49.78	1.100/27.94	1.420/36.07	1.800/45.72						
-445	2 x 13			2.06/52.34	1.200/30.48	1.520/38.61	1.900/48.26						
-446	2 x 15			2.26/57.40	1.400/35.56	1.720/43.69	2.100/53.34						
-447	2 x 17			2.46/62.48	1.600/40.64	1.920/48.79	2.300/58.42						
-448	2 x 20			2.76/70.10	1.900/48.26	2.220/56.39	2.600/66.04						
-449	2 x 22			2.960/75.18	2.100/53.34	2.420/61.47	2.800/71.12						
-450	2 x 25			3.26/82.80	2.400/60.96	2.720/69.09	3.100/78.74						
-451	2 x 30	D	LOW PROFILE	3.76/95.50	2.900/73.66	3.220/81.79	3.600/91.44	.250/6.35	4	4LF			
68710-452	2 x 7	C	STD.	1.460/37.08	.600/15.24	.920/23.37	1.300/33.02	.160/4.06	1		NOTE 10	14	NOTE 12

mat'l. code				surface ISO 1302 ✓		tolerance ISO 406 ISO 1101		projection 		product family QUICKIE			
ltr				ecn no		dr		date		tolerances unless otherwise specified		title	
AG										linear .XX±.01/.3		INCH/MM	
										linear .XXX±.005/.13		P.F. HDR. ASSEMBLY	
										0°±2'		scale 1:1	
										dr M. CLOUSER 3/01/90		sheet11 of13size	
										enr M. SMYK 3/01/90		A3	
										chr M. SMYK 3/01/90		68710	
										appd M. SMYK 3/01/90		type Product Customer Drawing	
sheet index		revision sheet											






FCIconnect.com

Copyright FCI

PRODUCT NUMBER	SIZE	STYLE	LATCH	DIM A	DIM B	DIM C	DIM D	DIM E	PIN PLATING	LEAD FREE PIN PLATING	POSITION OMITTED	LEAD FREE OPTION
68710-500	2 x 5	A	NONE	1.260/32.00	.400/10.16	.720/18.28	1.100/27.94	.160/4.06	5	5LF		NOTE 12
-501	2 x 7	C		1.460/37.08	.600/15.24	.920/23.37	1.300/33.02					
-502	2 x 8	D		1.560/39.62	.700/17.78	1.020/25.91	1.400/35.56					
-503	2 x 10			1.760/44.70	.900/22.86	1.220/30.99	1.600/40.64					
-504	2 x 12			1.960/49.78	1.100/27.49	1.420/36.07	1.800/45.72					
-505	2 x 13			2.060/52.34	1.200/30.48	1.520/38.61	1.900/48.26					
-506	2 x 15			2.260/57.40	1.400/35.56	1.720/43.69	2.100/53.34					
-507	2 x 17			2.460/62.48	1.600/40.64	1.920/48.79	2.300/58.42					
-508	2 x 20			2.760/70.10	1.900/48.26	2.220/56.39	2.600/66.04					
-509	2 x 22			2.960/75.18	2.100/53.34	2.420/61.47	2.800/71.12					
-510	2 x 25			3.260/82.80	2.400/60.96	2.720/69.09	3.100/78.74					
-511	2 x 30	D	NONE	3.760/95.50	2.900/73.66	3.220/81.79	3.600/91.44					
-520	2 x 5	A	STD.	1.260/32.00	.400/10.16	.720/18.28	1.100/27.94					
-521	2 x 7	C		1.460/37.08	.600/15.24	.920/23.37	1.300/33.02					
-522	2 x 8	D		1.560/39.62	.700/17.78	1.020/25.91	1.400/35.56					
-523	2 x 10			1.760/44.70	.900/22.86	1.220/30.99	1.600/40.64					
-524	2 x 12			1.960/49.78	1.100/27.49	1.420/36.07	1.800/45.72					
-525	2 x 13			2.060/52.34	1.200/30.48	1.520/38.61	1.900/48.26					
-526	2 x 15			2.260/57.40	1.400/35.56	1.720/43.69	2.100/53.34					
-527	2 x 17			2.460/62.48	1.600/40.64	1.920/48.79	2.300/58.42					
-528	2 x 20			2.760/70.10	1.900/48.26	2.220/56.39	2.600/66.04					
-529	2 x 22			2.960/75.18	2.100/53.34	2.420/61.47	2.800/71.12					
-530	2 x 25			3.260/82.80	2.400/60.96	2.720/69.09	3.100/78.74					
-531	2 x 30	D	STD.	3.760/95.50	2.900/73.66	3.220/81.79	3.600/91.44					
-540	2 x 5	A	LOW PROFILE	1.260/32.00	.400/10.16	.720/18.28	1.100/27.94					
-541	2 x 7	C		1.460/37.08	.600/15.24	.920/23.37	1.300/33.02					
-542	2 x 8	D		1.560/39.62	.700/17.78	1.020/25.91	1.400/35.56					
-543	2 x 10			1.760/44.70	.900/22.86	1.220/30.99	1.600/40.64					
-544	2 x 12			1.960/49.78	1.100/27.49	1.420/36.07	1.800/45.72					
-545	2 x 13			2.060/52.34	1.200/30.48	1.520/38.61	1.900/48.26					
-546	2 x 15			2.260/57.40	1.400/35.56	1.720/43.69	2.100/53.34					
-547	2 x 17			2.460/62.48	1.600/40.64	1.920/48.79	2.300/58.42					
-548	2 x 20			2.760/70.10	1.900/48.26	2.220/56.39	2.600/66.04					
-549	2 x 22			2.960/75.18	2.100/53.34	2.420/61.47	2.800/71.12					
-550	2 x 25			3.260/82.80	2.400/60.96	2.720/69.09	3.100/78.74					
-551	2 x 30		LOW PROFILE	3.760/95.50	2.900/73.66	3.220/81.79	3.600/91.44					
-552	2 x 8		NONE	1.560/39.62	.700/17.78	1.020/25.91	1.400/35.56				2	
-553	2 x 8		STD	1.560/39.62	.700/17.78	1.020/25.91	1.400/35.56				2	
-554	2 x 10		NONE	1.760/44.70	.900/22.86	1.220/30.99	1.600/40.64				2	
-555	2 x 10		STD	1.760/44.70	.900/22.86	1.220/30.99	1.600/40.64		5	5LF	2	
68710-556	2 x 20	D	STD	2.760/70.10	1.900/48.26	2.220/56.39	2.600/66.04	.160/4.06	1	1	1,15,16,17,18,19,20,21,22,37,38,39,40	NOTE 12

NOTE 10
NOTE 10
NOTE 10
NOTE 10
NOTE 10
NOTE 10
NOTE 10
NOTE 10
NOTE 10
NOTE 10
NOTE 10
NOTE 10



mat'l. code					surface ISO 1302 ✓		tolerance ISO 406 ISO 1101		projection 		product family QUICKIE						
ltr	ecn	no	dr	date	tolerances unless otherwise specified							title					
AG					angles	linear		.XX±.01/.3 .XXX±.005/.13 .XXXX±.0020/.051		INCH/MM 		P.F. HDR. ASSEMBLY SEA HORSE 4 WALL					
					0°±2'					scale 1:1							
					dr	M. CLOUSER		3/01/90				dwg no		sheet12 of13		size	
					engr	M. SMYK		3/01/90				68710				A3	
					chr	M. SMYK		3/01/90									
					appd	M. SMYK		3/01/90									
sheet index		revision sheet															



FCIconnect.com

Copyright FCI

PRODUCT NUMBER	SIZE	STYLE	LATCH	DIM A	DIM B	DIM C	DIM D	DIM E	PIN PLATING	LEAD FREE PIN PLATING	REMARKS	PINS REMOVED	LEAD FREE OPTION
68710-620	2 x 5	A	STD.	1.260/32.00	.400/10.16	.720/18.28	1.100/27.94	.120/3.05	2	2	MINI-LIF		NOTE 12
↑ -621	2 x 7	C	STD.	1.460/37.08	.600/15.24	.920/23.37	1.300/33.02	.120/3.05	2	2	MINI-LIF		
-640	2 x 20	D	STD.	2.760/70.10	1.900/48.26	2.220/56.39	2.600/66.04	.120/3.05	2	2	MINI-LIF		
-650	2 x 25	D	STD.	3.260/82.80	2.400/60.96	2.720/69.09	3.100/78.74	.120/3.05	2	2	MINI-LIF		
-651	2 x 22	D	STD.	2.960/75.18	2.100/53.34	2.420/61.47	2.800/71.12	.160/4.06	1	1		REMOVE PINS: 2,3,6,7,10,11,14,15,18,19,22,23, 26,27,30,31,34,35,38,39,42,43 & 44	
-652	2 x 5	A	STD.	1.260/32.00	.400/10.16	.720/18.29	1.100/27.94	↑	↑	↑		REMOVE PINS: 10	
-653	2 x 5	B	STD.	1.260/32.00	.400/10.16	.720/18.29	1.100/27.94					REMOVE PINS: 10	
-654	2 x 7	C	STD.	1.460/37.08	.600/15.24	.920/23.37	1.300/33.02					REMOVE PINS: 14	
-710	2 x 5	A	NONE	1.260/32.00	.400/10.16	.720/18.28	1.100/27.94						
↑ -714	2 x 7	C	↑	1.460/37.08	.600/15.24	.920/23.37	1.300/33.02						
-716	2 x 8	D		1.560/39.62	.700/17.78	1.020/25.91	1.400/35.56						NOTE 12
-720	2 x 10	↑		1.760/44.70	.900/22.86	1.220/30.99	1.600/40.64						
-726	2 x 13			2.060/52.32	1.200/30.48	1.520/38.61	1.900/48.26						
-734	2 x 17			2.460/62.48	1.600/40.64	1.920/48.79	2.300/58.42						
-740	2 x 20			2.760/70.10	1.900/48.26	2.220/56.39	2.600/66.04						
-750	2 x 25	↓	↓	3.260/82.80	2.400/60.96	2.720/69.09	3.100/78.74						
-760	2 x 30	D	NONE	3.760/95.50	2.900/73.66	3.220/81.79	3.600/91.44						
-810	2 x 5	A	STD.	1.260/32.00	.400/10.16	.720/18.29	1.100/27.94						
-814	2 x 7	C	↑	1.460/37.08	.600/15.24	.920/23.37	1.300/33.02						
-816	2 x 8	D	↑	1.560/39.62	.700/17.78	1.020/25.91	1.400/35.56						
-820	2 x 10	↑		1.760/44.70	.900/22.86	1.220/30.99	1.600/40.64						
-826	2 x 13			2.060/52.32	1.200/30.48	1.520/38.61	1.900/48.26						
-834	2 x 17			2.460/62.48	1.600/40.64	1.920/48.79	2.300/58.42						
-840	2 x 20			2.760/70.10	1.900/48.26	2.220/56.39	2.600/66.04						
-850	2 x 25	↓	↓	3.260/82.80	2.400/60.96	2.720/69.09	3.100/78.74						
-860	2 x 30	D	STD.	3.760/95.50	2.900/73.66	3.220/81.79	3.600/91.44						
-910	2 x 5	A	LOW	1.260/32.00	.400/10.16	.720/18.29	1.100/27.94						
-914	2 x 7	C	↑	1.460/37.08	.600/15.24	.920/23.37	1.300/33.02						
-916	2 x 8	D		1.560/39.62	.700/17.78	1.020/25.91	1.400/35.56						
-920	2 x 10	↑		1.760/44.70	.900/22.86	1.220/30.99	1.600/40.64						
-926	2 x 13			2.060/52.32	1.200/30.48	1.520/38.61	1.900/48.26						
-934	2 x 17			2.460/62.48	1.600/40.64	1.920/48.79	2.300/58.42						
-940	2 x 20			2.760/70.10	1.900/48.26	2.220/56.39	2.600/66.04						
-950	2 x 25	↓	↓	3.260/82.80	2.400/60.96	2.720/69.09	3.100/78.74						
↓ 68710-960	2 x 30	D	LOW	3.760/95.50	2.900/73.66	3.220/81.79	3.600/91.44	.160/4.06	1	1			

mat'l. code					surface ISO 1302 ✓		tolerance ISO 406 ISO 1101		projection 		product family QUICKIE							
ltr	ecn	no	dr	date	tolerances unless otherwise specified							title						
AG					angles	linear	.XX±.01/.3 .XXX±.005/.13 0°±2' .XXXX±.0020/.051					INCH/MM P.F. HDR. ASSEMBLY SEA HORSE 4 WALL						
												scale 1:1						
					dr	M. CLOUSER	3/01/90						dwg no		sheet 3 of 13			size
					enrg	M. SMYK	3/01/90						68710		A3			
					chr	M. SMYK	3/01/90											
					appd	M. SMYK	3/01/90						type Product Customer Drawing					
sheet index		revision sheet																

form: A3

Mouser Electronics

Authorized Distributor

Click to View Pricing, Inventory, Delivery & Lifecycle Information:

[FCI / Amphenol:](#)

[68710-079](#) [68710-139](#) [68710-157](#) [68710-543](#)