

NOTES:-  
1. THE "LF" PRODUCTS MEET EUROPEAN UNION DIRECTIVES AND OTHER COUNTRY REGULATIONS AS DESCRIBED IN GS-22-008  
2. LEAD FREE OR RoHS DIRECTIVE LABELING TO BE PROVIDED AS PER GS-14-920 FOR RoHS COMPATIBLE VERSION.

PRODUCT NUMBER BPS8B21ACD-CO----

WITH "LF" SUFFIX	LEAD FREE OR RoHS COMPATIBLE PRODUCT
WITHOUT SUFFIX	LEADED PRODUCT

WIRE ACCOMODATION		
PRODUCT NUMBER	WIRE SIZE	CONTACT IDENTIFICATION
BPS8B21ACD0C0--	AWG28/30	0
BPS8B21ACD2C0--	AWG24/26	2

CONTACT PLATING	
PLATING CODE	PERFORMANCE LEVEL PER DIN41612
Z0	CLASS 3
Z1	CLASS 2
E9	CLASS 1

#### PERFORMANCES CHARACTERISTICS

VOLTAGE RATING : 250 VAC (rms)  
CURRENT RATING : 1,5 A AT 25 °C, 1 A AT 70 °C.  
INSULATION RESISTANCE : 1000MΩINITIAL, 100MΩMIN. AFTER TEST  
DIELECTRIC WITH-  
STANDING VOLTAGE : 1000 VAC (rms).  
CONTACT RESISTANCE : 15mΩMAX. INITIAL, 5mΩMAX. RISE OF INITIAL VALUE AFTER TEST.  
OPERATING TEMPERATURE\*: -40 °C TO +125 °C.  
INSERTION FORCE : 1 N MAX./CONTACT.  
WITHDRAWAL FORCE : 0,2 N MIN./CONTACT.

\*DEPENDING ON THE CABLE, THE MAX. TEMPERATURE CAN BE LOWER.  
FOR STANDARD PVC INSULATED CABLE : 105 °C MAX.

#### CONSTRUCTION

BODY MATERIAL : GLASS-REINFORCED THERMOPLASTIC (UL94V-0).  
COVER MATERIAL : POLYESTER (PBTP), COLOUR : BLACK.  
CONTACT MATERIAL : PHOSPHOR BRONZE.  
CONTACT FINISH : Au OVER Ni IN CONTACT AREA, SnPb ON SnPb ON I.D.C. TERMINAL FOR LEADED PRODUCTS.  
Sn (MATTE TIN) ON I.D.C. TERMINAL FOR LEAD FREE PRODUCTS.

Z0 : PERFORMANCE LEVEL PER DIN41612 CLASS 3  
Z1 : PERFORMANCE LEVEL PER DIN41612 CLASS 2  
E9 : PERFORMANCE LEVEL PER DIN41612 CLASS 1  
OTHERS : CONSULT FCI

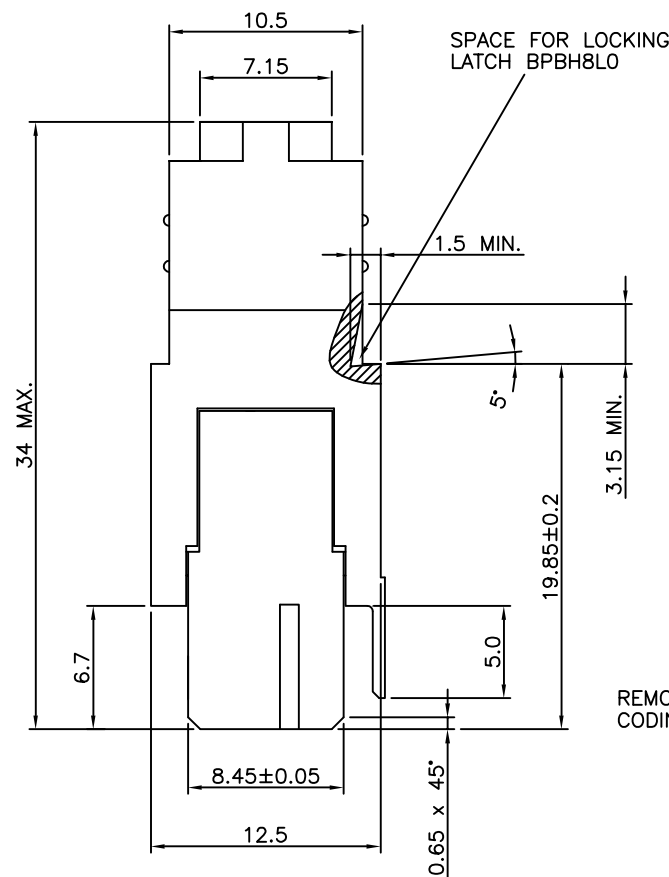
TIE-WRAP : OPTIONAL (PART N°. TF3)

#### AWG WIRE SIZE MARKING

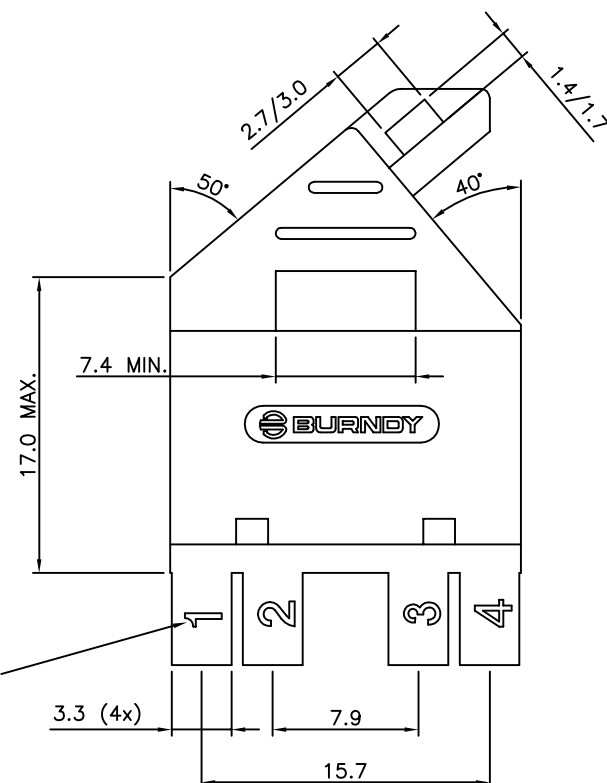
BPS8B21ACD0C0-- : 28/30.  
BPS8B21ACD0C0--LF : 28/30.  
BPS8B21ACD2C0-- : 24/26.  
BPS8B21ACD2C0--LF : 24/26.

#### DATECODE MARKING

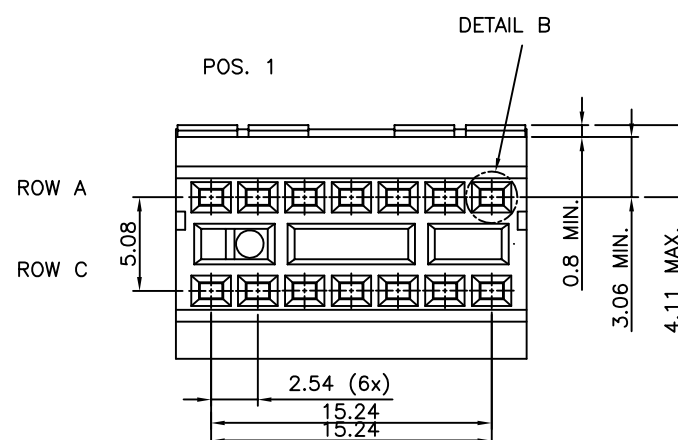
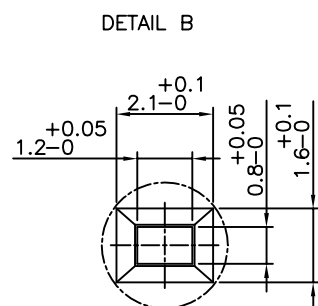
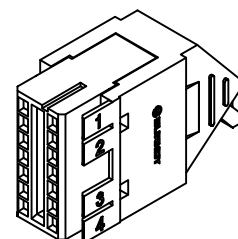
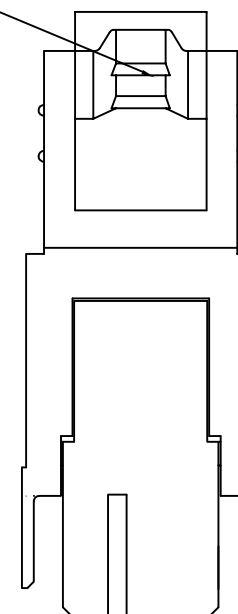
A + YEAR & WEEKCODE, EXAMPLE : A9950.



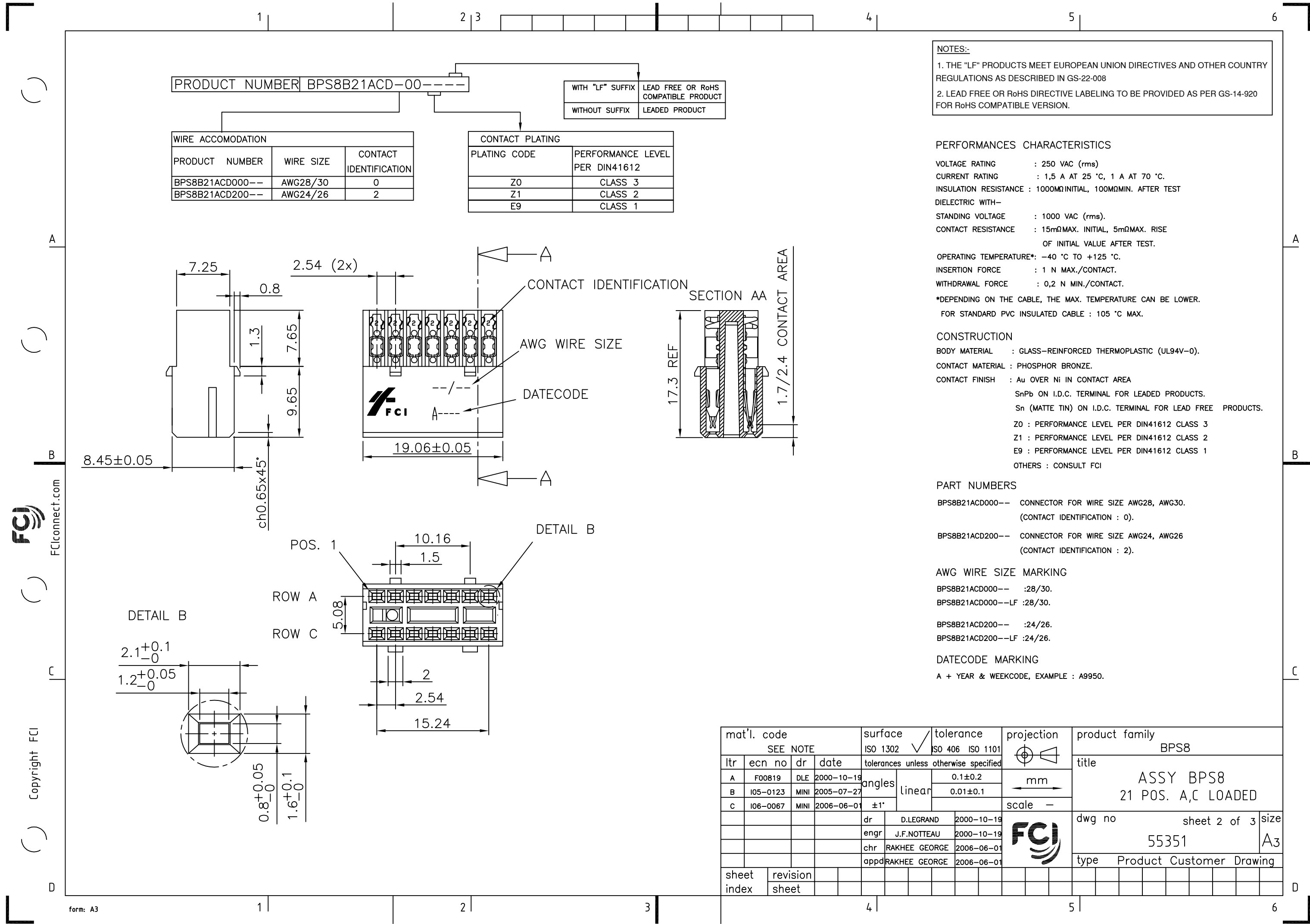
REMOVABLE CODING KEYS


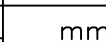
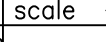


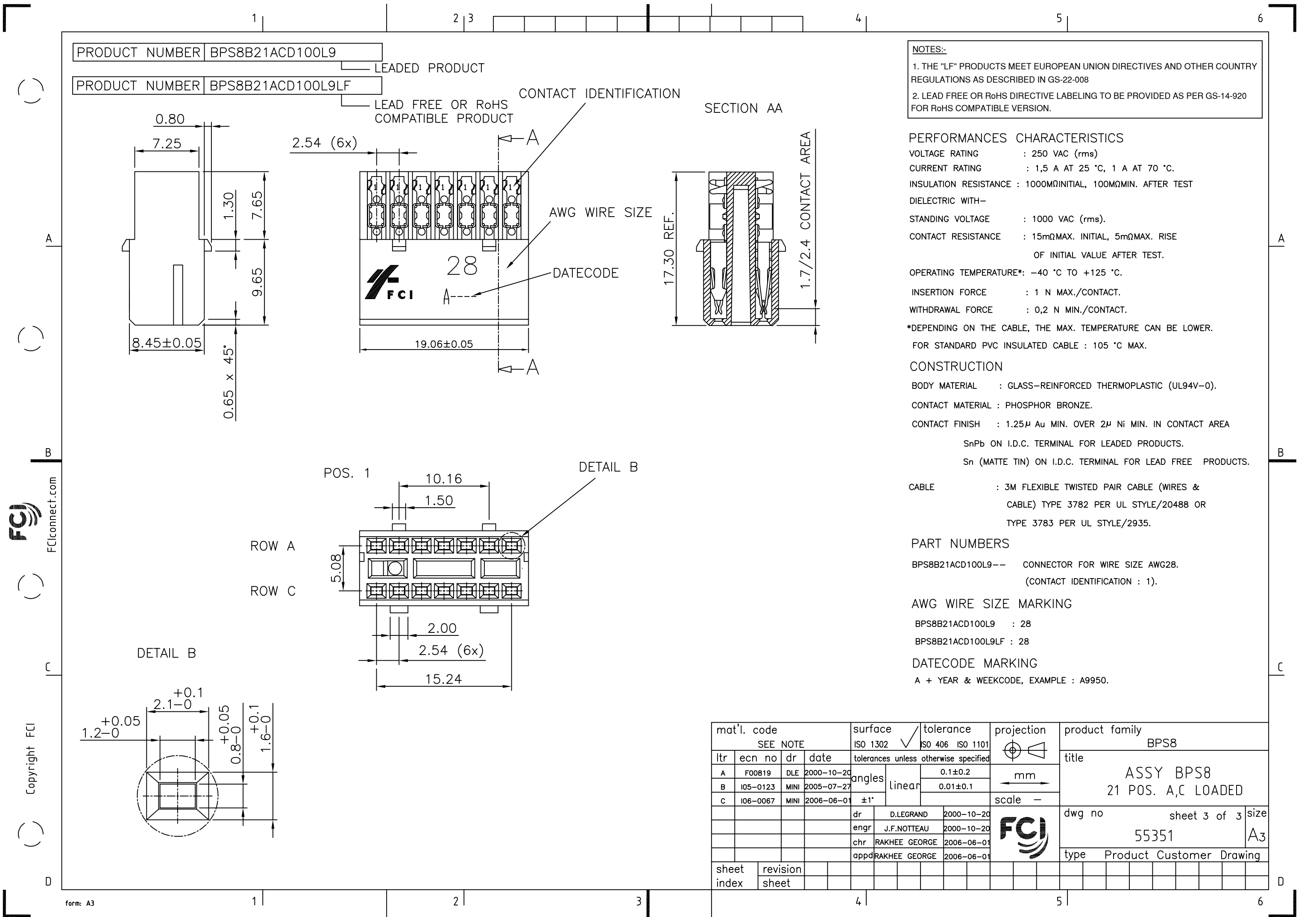
CABLE Ø 7.0 MAX.



mat'l. code SEE NOTE				surface ISO 1302 ✓	tolerance ISO 406 ISO 1101	projection mm	product family BPS8			
ltr	ecn no	dr	date	tolerances unless otherwise specified		mm	title ASSY BPS8 21 POS. A,C LOADED			
A	F00819	DLE	2000-10-23	angles	linear					
B	I05-0123	MINI	2005-07-27	±1°						
C	I06-0067	MINI	2006-06-01			scale -	dwg no 55351 sheet 1 of 3 size A3			
				dr	D.LEGRAND	2000-10-23				
				engr	J.F.NOTTEAU	2000-10-23				
				chr	RAKHEE GEORGE	2006-06-01	type Product Customer Drawing			
				appd	RAKHEE GEORGE	2006-06-01				
sheet index	revision	C	C	C						
	sheet	1	2	3						



mat'l. code SEE NOTE				surface ISO 1302 ✓		tolerance ISO 406 ISO 1101		projection 		product family BPS8										
ltr	ecn no	dr	date	tolerances unless otherwise specified							title  ASSY BPS8 21 POS. A,C LOADED									
A	F00819	DLE	2000-10-19	angles	linear	0.1±0.2														
B	I05-0123	MINI	2005-07-27			0.01±0.1														
C	I06-0067	MINI	2006-06-01			±1°														
				dr	D.LEGRAND		2000-10-19			dwg no						sheet 2 of 3		size		
				engr	J.F.NOTTEAU		2000-10-19			55351								A3		
				chr	RAKHEE GEORGE		2006-06-01													
				appd	RAKHEE GEORGE		2006-06-01													
sheet index		revision sheet																		



NOTES:-

1. THE "LF" PRODUCTS MEET EUROPEAN UNION DIRECTIVES AND OTHER COUNTRY REGULATIONS AS DESCRIBED IN GS-22-008

2. LEAD FREE OR RoHS DIRECTIVE LABELING TO BE PROVIDED AS PER GS-14-920 FOR RoHS COMPATIBLE VERSION.

PERFORMANCES CHARACTERISTICS

VOLTAGE RATING : 250 VAC (rms)

CURRENT RATING : 1,5 A AT 25 °C, 1 A AT 70 °C.

INSULATION RESISTANCE : 1000MΩINITIAL, 100MΩMIN. AFTER TEST

DIELECTRIC WITH-

STANDING VOLTAGE : 1000 VAC (rms).

CONTACT RESISTANCE : 15mΩMAX. INITIAL, 5mΩMAX. RISE OF INITIAL VALUE AFTER TEST.

OPERATING TEMPERATURE\*: -40 °C TO +125 °C.

INSERTION FORCE : 1 N MAX./CONTACT.

WITHDRAWAL FORCE : 0,2 N MIN./CONTACT.

\*DEPENDING ON THE CABLE, THE MAX. TEMPERATURE CAN BE LOWER.

FOR STANDARD PVC INSULATED CABLE : 105 °C MAX.

CONSTRUCTION

BODY MATERIAL : GLASS-REINFORCED THERMOPLASTIC (UL94V-0).

CONTACT MATERIAL : PHOSPHOR BRONZE.

CONTACT FINISH : 1.25μ Au MIN. OVER 2μ Ni MIN. IN CONTACT AREA

SnPb ON I.D.C. TERMINAL FOR LEADED PRODUCTS.

Sn (MATTE TIN) ON I.D.C. TERMINAL FOR LEAD FREE PRODUCTS.

CABLE : 3M FLEXIBLE TWISTED PAIR CABLE (WIRES & CABLE) TYPE 3782 PER UL STYLE/20488 OR TYPE 3783 PER UL STYLE/2935.

PART NUMBERS

BPS8B21ACD100L9-- CONNECTOR FOR WIRE SIZE AWG28.

(CONTACT IDENTIFICATION : 1).

AWG WIRE SIZE MARKING

BPS8B21ACD100L9 : 28

BPS8B21ACD100L9LF : 28

DATECODE MARKING

A + YEAR & WEEKCODE, EXAMPLE : A9950.

mat'l. code				surface		tolerance		projection	product family											
SEE NOTE				ISO 1302		ISO 406 ISO 1101			BPS8											
ltr	ecn no	dr	date	tolerances unless otherwise specified							title									
A	F00819	DLE	2000-10-20	angles	linear	0.1±0.2		mm	ASSY BPS8 21 POS. A,C LOADED											
B	I05-0123	MINI	2005-07-27			0.01±0.1														
C	I06-0067	MINI	2006-06-01	±1°				scale	—											
				dr	D.LEGRAND		2000-10-20		dwg no					sheet 3 of 3			size			
				engr	J.F.NOTTEAU		2000-10-20		55351					A3						
				chr	RAKHEE GEORGE		2006-06-01													
				appd	RAKHEE GEORGE		2006-06-01													
sheet index		revision sheet																		