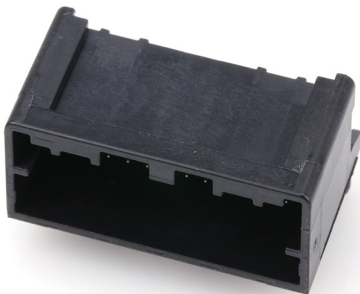




**Part Number :** [348268204](#)  
**Product Description :** Mini50 Unsealed Right-Angle Header, Dual Row, 20 Circuit, Polarization Option A, 3.30mm Pin Length, Black, Tape and Reel  
**Series Number :** 34826  
**Status :** Active  
**Product Category :** PCB Headers and Receptacles  
**Engineering Number :** 034826-8204



## Documents & Resources

### Drawings

[348268204\\_sd.pdf](#)

### 3D Models and Design Files

[348268204\\_stp.zip](#)


### Specifications

[AS-34791-020-CH-001.pdf](#)

[347910020-TS-000.pdf](#)

## Product Environment Compliance

### Compliance

GADSL/IMDS	Compliant with Exemption 33; 44
China RoHS	
EU ELV	Compliant per 2000/53/EC
Low-Halogen Status	Low-Halogen per IEC 61249-2-21
REACH SVHC	Not Contained per D(2024)4144-DC (27 June 2024)
EU RoHS	Compliant per EU 2015/863

### Multiple Part Product Compliance Statements

- Eu RoHS
- REACH SVHC
- Low-Halogen

## Multiple Part Industry Compliance Documents

- IPC 1752A Class C
- IPC 1752A Class D
- Molex Product Compliance Declaration
- IEC-62474
- chemSHERPA (xml)

## EU RoHS Certificate of Compliance

---

### Part Details

#### General

Status	Active
Category	PCB Headers and Receptacles
Series	34826
Description	Mini50 Unsealed Right-Angle Header, Dual Row, 20 Circuit, Polarization Option A, 3.30mm Pin Length, Black, Tape and Reel
Application	Automotive, Power, Signal, Wire-to-Board
Component Type	PCB Header
Product Name	Mini50
UPC	193264450688

#### Electrical

Current - Maximum per Contact	4.0A (for reference only)
Voltage - Maximum	14V (typical operating)

#### Physical

Breakaway	No
Circuits (Loaded)	20
Circuits (maximum)	20
Color - Resin	Black
Durability (mating cycles max)	10
First Mate / Last Break	No
Glow-Wire Capable	No
Guide to Mating Part	No
Keying to Mating Part	Yes

Lock to Mating Part	Yes
Material - Metal	Brass
Material - Plating Mating	Tin
Material - Plating Termination	Tin
Material - Resin	High Temperature Thermoplastic
Net Weight	2.600/g
Number of Rows	2
Orientation	Right Angle
Packaging Type	Embossed Tape on Reel
PC Tail Length	2.80mm
PCB Locator	Yes
Pitch - Mating Interface	2.00mm
Polarized to Mating Part	Yes
Polarized to PCB	Yes
Temperature Range - Operating	-40° to +105°C
Termination Interface Style	Through Hole

---

## Mates With / Use With

### Mates with Part(s)

Description	Part Number
Mini50 Unsealed Dual Row Receptacle Housings	<u>34824</u>