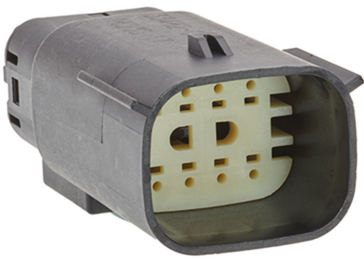




Part Number : [334824852](#)
Product Description : MX150 Mat-Sealed Male Connector Assembly, Dual Row, 8 Circuits, Keying Option C, without Connector Position Assurance, Dark Gray
Series Number : 33482
Status : Active
Product Category : Connector Housings



Documents & Resources


Drawings
[Drawing 334824852_sd.pdf](#)
[Packaging Design Drawing PK-31300-635-001.pdf](#)

3D Models and Design Files
[3D Model 334824852_stp.zip](#)

Specifications
[Application Specification AS-33472-100-CH-001.pdf](#)

Product Environment Compliance

Compliance

| | |
|--------------------|---|
| GADSL/IMDS | Compliant |
| China RoHS |  |
| EU ELV | Compliant per 2000/53/EC |
| Low-Halogen Status | Low-Halogen per IEC 61249-2-21 |
| REACH SVHC | Not Contained per D(2024)4144-DC (27 June 2024) |
| EU RoHS | Compliant per EU 2015/863 |

Multiple Part Product Compliance Statements
- Eu RoHS
- REACH SVHC
- Low-Halogen

Multiple Part Industry Compliance Documents
- IPC 1752A Class C
- IPC 1752A Class D

- Molex Product Compliance Declaration
- IEC-62474
- chemSHERPA (xml)

EU RoHS Certificate of Compliance

Part Details

General

| | |
|----------------|--|
| Status | Active |
| Category | Connector Housings |
| Series | 33482 |
| Description | MX150 Mat-Sealed Male Connector Assembly, Dual Row, 8 Circuits, Keying Option C, without Connector Position Assurance, Dark Gray |
| Application | Power, Wire-to-Wire, Automotive |
| Product Family | MX150 Sealed and Unsealed Connector System |
| Product Name | MX150 |
| UPC | 889056544054 |

Agency

| | |
|----|--------|
| UL | E29179 |
|----|--------|

Physical

| | |
|-----------------------|-------------|
| Circuits (maximum) | 8 |
| Color - Resin | Gray (Dark) |
| Flammability | 94V-0 |
| Gender | Plug |
| Glow-Wire Capable | No |
| Keying to Mating Part | Yes |
| Lock to Mating Part | Yes |
| Material - Resin | SPS/Nylon |
| Net Weight | 11.410/g |
| Number of Rows | 2 |
| Packaging Type | Bag |
| Panel Mount | No |

| | |
|-------------------------------|----------------|
| Pitch - Mating Interface | 3.50mm |
| Polarized to Mating Part | Yes |
| Stackable | No |
| Temperature Range - Operating | -40° to +125°C |

Mates With / Use With

Mates with Part(s)

| Description | Part Number |
|---|--------------|
| MX150 Mat-Sealed Dual Row Female Connector Assemblies | <u>33472</u> |

Use with Part(s)

| Description | Part Number |
|--------------------------|------------------|
| MX150 Sealed Cavity Plug | <u>343450001</u> |
| MX150 Male Terminals | <u>33000</u> |
| MX150 Male Terminals | <u>33011</u> |