



Wire & Cable > Power Cable > Flexible Power Cable, 1000 VAC



Cable Type: **SHF260**

Operating Voltage: **1000 VAC**

Wire & Cable Insulation Material: **Modified PFA**

Operating Temperature Range: **-65 – 260 °C**

Wire Size: **2 AWG**

[All Flexible Power Cable, 1000 VAC \(18\)](#)

Features

Product Type Features

Wall Type	Single Wall
-----------	-------------

Configuration Features

Number of Conductors	1
Number of Strands	1665

Electrical Characteristics

Operating Voltage	1000 VAC
-------------------	----------

Body Features

Wire Color (Base)	White
Wire & Cable Insulation Material	Modified PFA
Conductor Material	Nickel-Coated Copper

Dimensions

Outside Cable Diameter	9.83 mm[.387 in]
Conductor Diameter Range	8.26 mm[.325 in]
Strand Size	34 AWG
Wire Size	2 AWG



Usage Conditions

Cable Type	SHF260
Operating Temperature Range	-65 – 260 °C

Product Compliance


For compliance documentation, visit the product page on TE.com>

EU RoHS Directive 2011/65/EU	Compliant
EU ELV Directive 2000/53/EC	Compliant
China RoHS 2 Directive MIIT Order No 32, 2016	No Restricted Materials Above Threshold
EU REACH Regulation (EC) No. 1907/2006	Current ECHA Candidate List: JUNE 2024 (241) Candidate List Declared Against: JAN 2024 (240) Does not contain REACH SVHC
Halogen Content	Out of Scope - excluded from Halogen requirements
Solder Process Capability	Not applicable for solder process capability


Product Compliance Disclaimer

This information is provided based on reasonable inquiry of our suppliers and represents our current actual knowledge based on the information they provided. This information is subject to change. The part numbers that TE has identified as EU RoHS compliant have a maximum concentration of 0.1% by weight in homogenous materials for lead, hexavalent chromium, mercury, PBB, PBDE, DBP, BBP, DEHP, DIBP, and 0.01% for cadmium, or qualify for an exemption to these limits as defined in the Annexes of Directive 2011/65/EU (RoHS2). Finished electrical and electronic equipment products will be CE marked as required by Directive 2011/65/EU. Components may not be CE marked. Additionally, the part numbers that TE has identified as EU ELV compliant have a maximum concentration of 0.1% by weight in homogenous materials for lead, hexavalent chromium, and mercury, and 0.01% for cadmium, or qualify for an exemption to these limits as defined in the Annexes of Directive 2000/53/EC (ELV). Regarding the REACH Regulation, the information TE provides on SVHC in articles for this part number is based on the latest European Chemicals Agency (ECHA) 'Guidance on requirements for substances in articles' posted at this URL: <https://echa.europa.eu/guidance-documents/guidance-on-reach>

Compatible Parts



TE Part # 9-120035-5
[HarnWare/HarnVis Purchase Charge](#)



TE Part # 9-120035-6
[HarnWare/HarnVis Renewal Charge](#)

Also in the Series | RAYCHEM SHF Series



Power Cable(28)

Customers Also Bought



TE Part #5499913-1
A/L UNIV HDR 10P RA SHT LAT



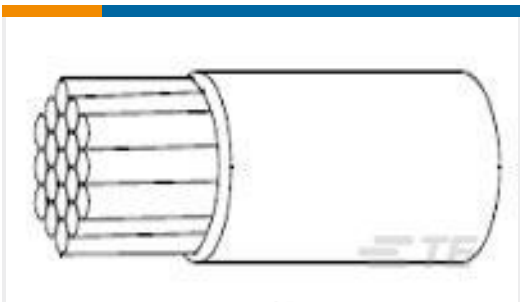
TE Part #208492-1
PLUG ASSY,SZ 22,CMC



TE Part #1616029-3
B233P=RELAY



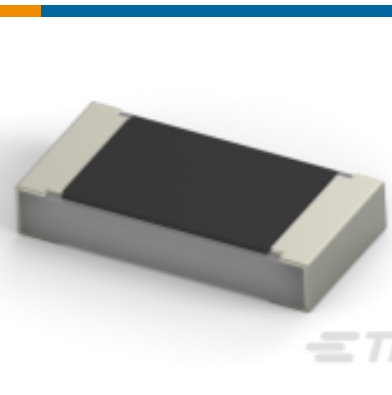
TE Part #EG4536-000
SHF260-0113-18-9



TE Part #216390-000
22759/32-28-9



TE Part #L9000034-01
Antenna 1/4 Wave Short 2.4GHz SMA



TE Part #4-1614958-2
CPF 0805 2R61 0.1% 25ppm 1K RL



TE Part #ZPF000000000011559
BJE 244



TE Part #1617038-8
HMB1130S06 = 2073 HMB RELAY



TE Part #ER7496-000
55A0811-22-9CS3530

Documents

Product Drawings

SHF260-0113-2-9

English

Datasheets & Catalog Pages

SHF-260 Highly Flexible Wire

English

Product Specifications



Wire, Electric, Modified Perfluoroalkoxy Copolymer Resin-Insulated, Nickel-Coated Copper

English