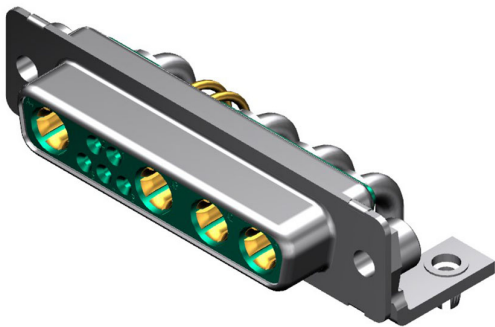




Part Number : [1731070685](#)
Product Description : FCT Mixed Layout D-Sub Connector, Female, Right-Angle, PCB Through Hole, Gold Plating, Tin-plated Shell, 14.50mm Riveted Metal Bracket and #4-40 Clinch Nut, 9 Circuits Loaded (4 High Power, 5 Signal), Green Insulator
Series Number : 173107
Status : Active
Product Category : D-Sub Connectors
Engineering Number : FM9W4S5-1343




Documents & Resources

Drawings
[Drawing 1731070685_sd.pdf](#)

Product Environment Compliance

Compliance

GADSL/IMDS	Not Relevant
China RoHS	
EU ELV	Not Relevant
Low-Halogen Status	Low-Halogen per IEC 61249-2-21
REACH SVHC	Contains Lead per D(2024)4144-DC (27 June 2024)
EU RoHS	Compliant with Exemption 6(c) per EU 2015/863

Multiple Part Product Compliance Statements

- Eu RoHS
- REACH SVHC
- Low-Halogen

Multiple Part Industry Compliance Documents

- IPC 1752A Class C
- IPC 1752A Class D
- Molex Product Compliance Declaration
- IEC-62474

Part Details

General

Status	Active
Category	D-Sub Connectors
Series	173107
Description	FCT Mixed Layout D-Sub Connector, Female, Right-Angle, PCB Through Hole, Gold Plating, Tin-plated Shell, 14.50mm Riveted Metal Bracket and #4-40 Clinch Nut, 9 Circuits Loaded (4 High Power, 5 Signal), Green Insulator
IP Rating	IP20
Magnetic	Yes
Product Family	FCT D-Sub Connectors
Product Name	FCT Products
Type	Mixed Layout
UPC	191130092116

Electrical

Current - Maximum per Contact	20.0A
Shielded	Yes

Physical

Circuits (Loaded)	9
Circuits (maximum)	9
Color - Resin	Green
Durability (mating cycles max)	500
Gender	Female
Material - Contact	Copper Alloy
Material - Resin	PBT
Material - Shell	Steel
Net Weight	21.800/g
Number of Rows	2

Orientation	Right-Angle
Packaging Type	Carton
Panel Mount	Rear
Panel Mount Method	Thread-In
PC Tail Length	11.00mm
PCB Locator	No
PCB Retention	None
PCB Thickness - Recommended	1.60mm
Pitch - Mating Interface	2.84mm
Pitch - Termination Interface	2.84mm
Plating - Contact	Gold over Nickel
Plating - Shell	Tin
Polarized to Mating Part	Yes
Polarized to PCB	Yes
Ports	1
Temperature Range - Operating	-55° to +130°C
Termination Style	Through Hole
Waterproof / Dustproof	No
Waterproof / Dustproof Type	IP20
Wire Size (AWG)	20

Mates With / Use With

Mates with Part(s)

Description	Part Number
Mates With	FCT Mixed Layout D-Sub, Size 3, 9W4, Plug