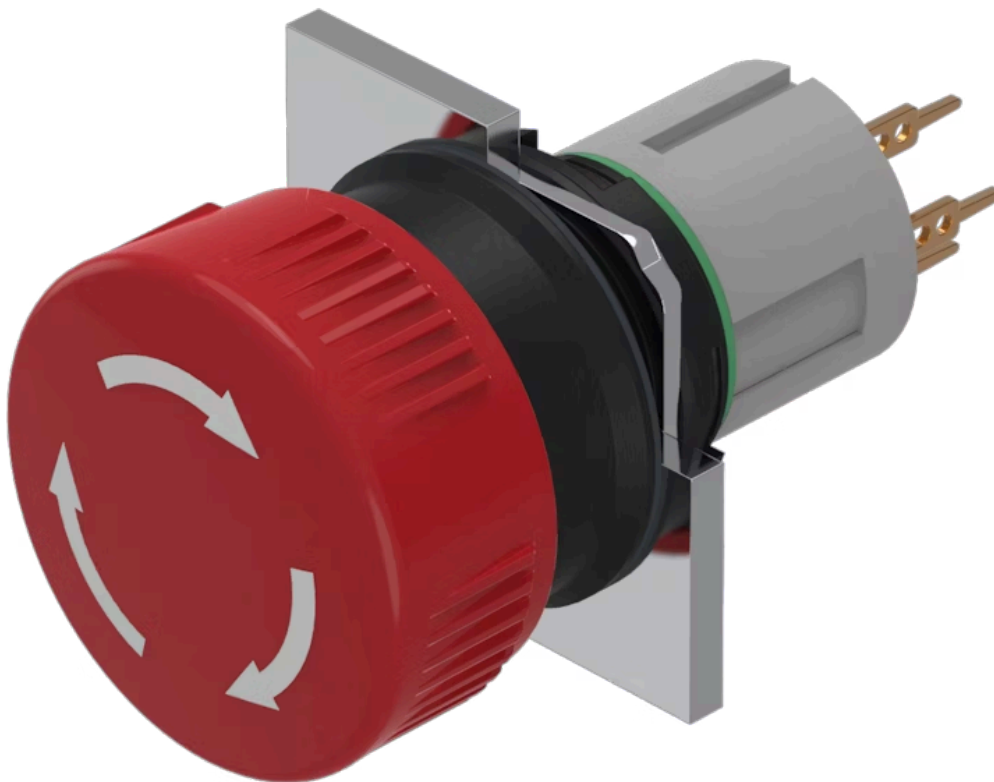


Actuator

51-
252.026



<https://eao.com/p/51-252.026>

Your product:



51-252.026 Actuator

FRONT

Front form:	round
Front dimension:	Ø 24,5 mm

MOUNTING

Design:	raised
Mounting type:	Panel mounting

OPERATING-/INDICATION PART

Lens shape:	mushroom-head
Lens illumination:	non illuminative
Lens material:	Plastic
Lens colour:	Red
Lens optics:	opaque

ELECTRICAL CHARACTERISTICS

Switching voltage and switching current:	100 mA at 42 VAC/VDC
Contacts:	2 NC

MECHANICAL CHARACTERISTIC

Mechanical lifetime:	1 Mio. cycles of operation
Operating Travel:	3 mm
Operating force:	18 ... 21 N (depending on the switching element)

Contact material:	Gold
Switching system:	This low-level switching element was designed for switching low powers in electronic circuits. The mechanism assures reliable switching of loads ranging from a few $\mu\text{A}/\mu\text{V}$ up to 100 mA/ 42 VAC/DC. Single-break momentary contact, as normally open or normally closed with 4 independent points of contact. 2 momentary contacts per switching element; combination of normally open and normally closed is possible. Special features are the long life, extremely short rebound time and stable contact resistance.
Tightening torque:	Fixing nut max. 0.5 Nm
Switching action:	Maintained
Terminal:	Universal terminal, 2 x 0.5 mm
Switching system:	Low-level element
Weight:	0.011 kg

AMBIENT CONDITION

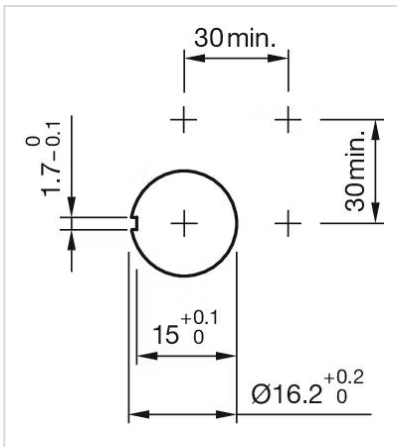
Storage temperature:	– 40 °C ... + 85 °C
IP front protection:	IP65, according to DIN EN 60529
Operating temperature:	– 25 °C ... + 55 °C

CERTIFICATE

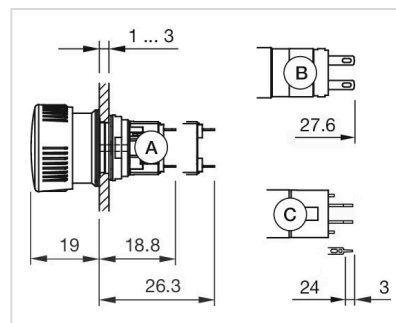
RoHS:	RoHS compliant
REACH:	REACH compliant

OTHER

Housing colour:	Black
Short Description:	Actuator, Ø 24,5 mm, mushroom-head, non illuminative, Red, Plastic, opaque, round, 2 NC, Maintained, Universal terminal, 2 x 0.5 mm, IP65, according to DIN EN 60529
Hints:	Marking arrows
Mounting cut-outs:	



Dimension drawings:



A = Solder terminal
 B = Plug-in terminal 2.8 mm x 0.5 mm
 C = Universal terminal 2.0 mm x 0.5 mm

Wiring diagrams:

