

Molded Parts  
Specification Control Drawing

Part Number : 101A041-X-02  
Description : Cap, Round End

- NOTES
1. All dimensions are in 

inches  
[millimeters]
  2. Dimensions appearing in table are as follows:  
a - As Supplied  
b - After Unrestricted Recovery
  3. Coating is optional. As supplied dimensions appearing in table are for uncoated parts. When coating is added, entry diameters will be reduced by .06 max.
  4. Recovered parts may have angularity of 30° - 45°.

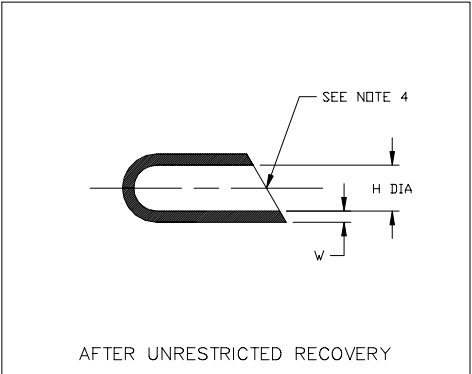
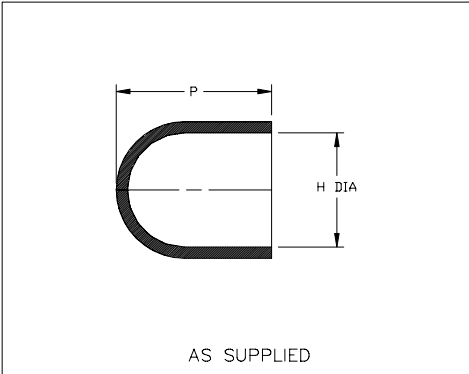


TABLE OF DIMENSIONS				
PART NUMBER	H		P	W
	Min	Max	±20%	±20%
	a	b	a	b
101A041-X-02	.60 [15,2]	.25 [6,4]	.63 [16,0]	.07 [1,78]

**tyco**/Electronics  
TYCO ELECTRONICS  
307 CONSTITUTION DRIVE  
MENLO PARK, CALIFORNIA 94025

Revision : B  
Date : 10/25/02

Part Number : 101A041-X-02  
Description : Cap, Round End

Molded Parts  
Specification Control Drawing

Part Number : 101A041-X-02  
Description : Cap, Round End

COMPATABILITY CHART					
MATERIAL DASH NO.	MATERIAL DESCRIPTION	RT SPEC	COATING SLASH NO.	COATING S NO.	COATING DESCRIPTION
-3	Polyolefin, Semi-Rigid	RT-301			
-4	Polyolefin, Flexible	RT-1304			

ORDERING INFORMATION

101A041-X-02/XXX

Base part number

Material dash number  
(See Compatability Chart)

Modification number  
(If necessary, see front of scd binder  
for a complete list)

Adhesive slash number  
(If necessary, see Compatability Chart)

THIS DRAWING IS SUBJECT TO CHANGE WITHOUT NOTICE; CONSULT YOUR  
NEAREST FIELD REPRESENTATIVE FOR CURRENT REVISION

**tyco**/Electronics  
TYCO ELECTRONICS  
307 CONSTITUTION DRIVE  
MENLO PARK, CALIFORNIA 94025

Revision : B  
Date : 10/25/02

Part Number : 101A041-X-02  
Description : Cap, Round End  
CAD FILE MP02133