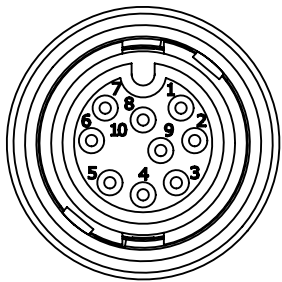


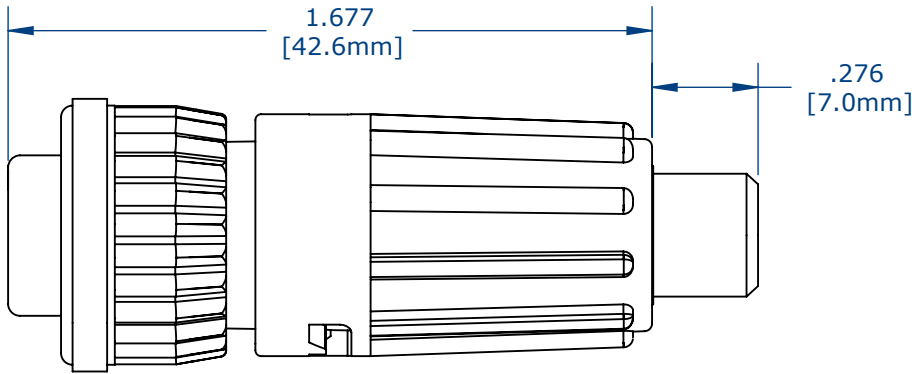
- NOTES:
- 1. CONTACTS ARE ASSEMBLED INTO CONNECTOR.
 - 2. PARTS ARE TO BE BULK PACKED.
 - 3. ALL DIMENSIONS ARE FOR REFERENCE ONLY.

TABLE 1	
ASSY P/N	FOR CABLE O.D
6882-9PG- 522	0.220 - 0.250
6882-9PG- 528	0.265 - 0.285

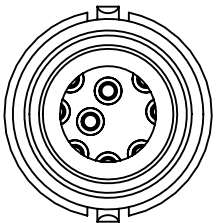
NO. OF CONTACTS — GROMMET SIZE



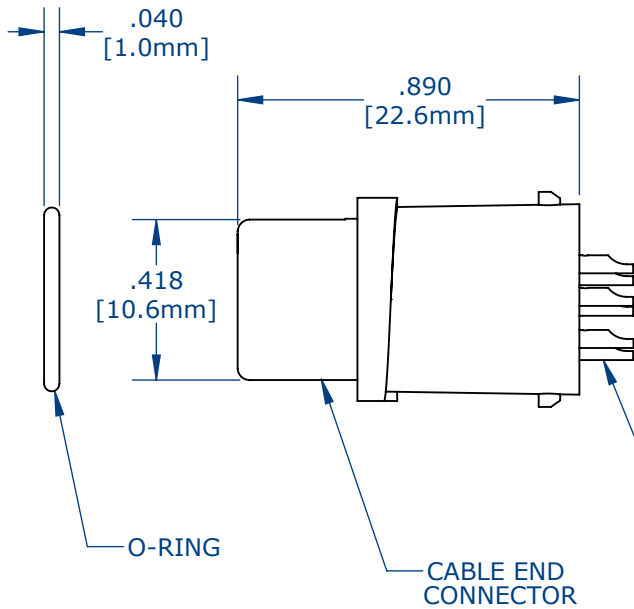
FACE VIEW



ASSEMBLED KIT VIEW

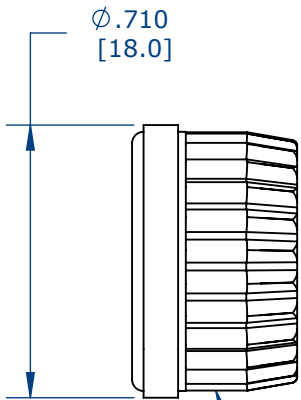


WIRE VIEW

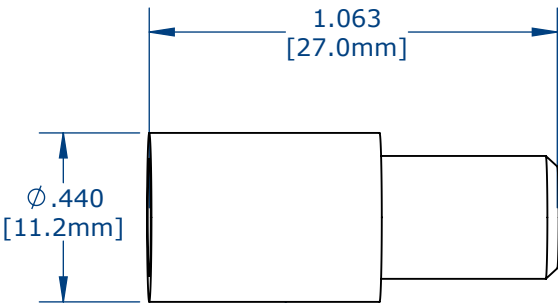


O-RING

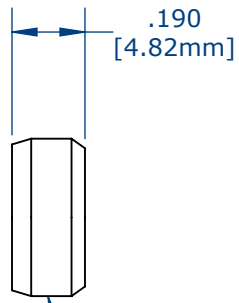
CABLE END CONNECTOR



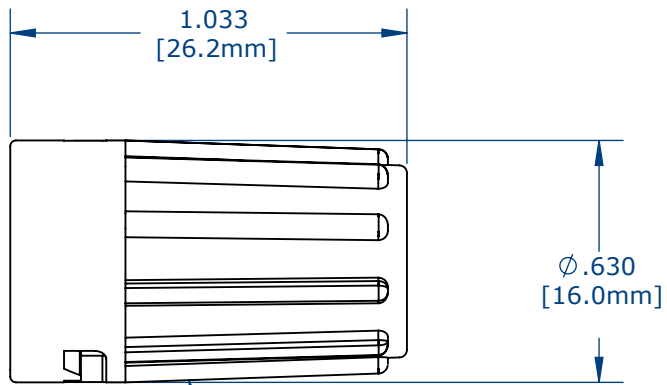
COUPLING RING



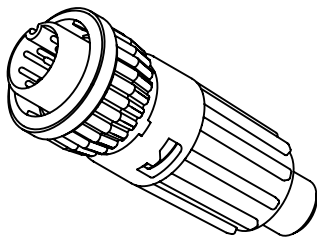
GROMMET, LONG



CABLE GRIP



BACKSHELL, LONG



ASSEMBLED KIT FOR CUSTOMER REFERENCE

(CUSTOMER DRAWING)

CUSTOMER APPROVAL

THIS DOCUMENT CONTAINS CONFIDENTIAL INFORMATION PROPRIETARY TO CONXALL CORPORATION. ANY REPRODUCTION, DISCLOSURE, OR USE OF THIS DOCUMENT /INFORMATION IS EXPRESSLY PROHIBITED UNLESS AUTHORIZED IN WRITING BY CONXALL CORPORATION.

APPROVED BY: _____

DATE: _____

0A	AM	08/09/16	FIRST DRAWN
REV.	INIT.	DATE	DESCRIPTION
ALL INFORMATION ILLUSTRATED IS THE PROPERTY OF "CONXALL CORPORATION." UNAUTHORIZED DUPLICATION OR DISTRIBUTION OF THIS DOCUMENT IS PROHIBITED.			ORIG. DRAWN BY: AM DATE: 08/09/16
ALL UNITS ARE IN FEET, INCHES, FRACTION OF INCHES AND DECIMALS. UNLESS OTHERWISE SPECIFIED TOLERANCES: 3 PLACE DECIMALS ±.005 ANGLES ±1° FRACTIONS ±1/16 — CRITICAL CHARACTERISTIC FLAG PER SPEC. XXXX			CHECKED BY: _____
APPROVED BY: _____			TITLE: CABLE CONNECTOR, KIT (9)#22 PIN CONTACTS, SOLDER LONG BACKSHELL, MINI-CON-X STANDARD PRODUCT
SCALE NTS	SIZE B	SHEET 1 OF 1	CUSTOMER: _____
FILE: _____	DIRECTORY: SLW	PART NUMBER: W6882-9PG-522	REV 0A

RoHS COMPLIANT